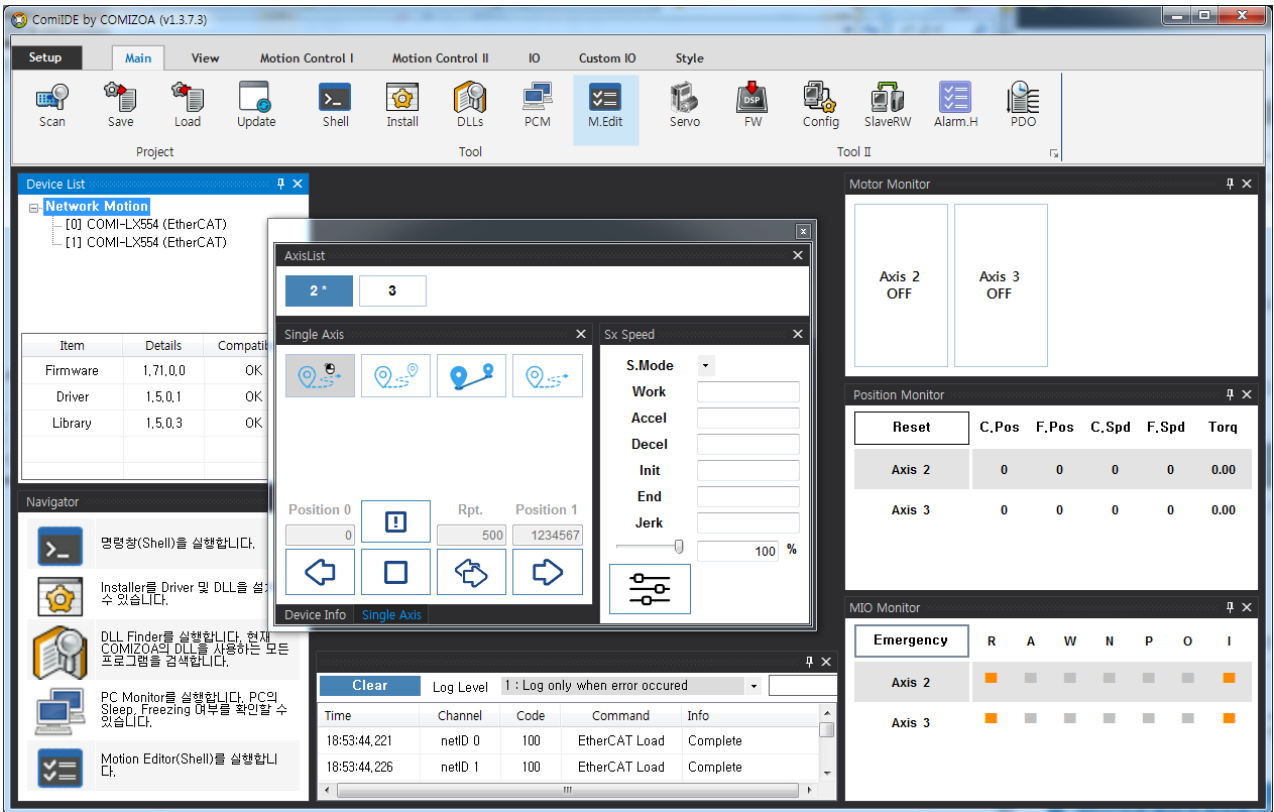


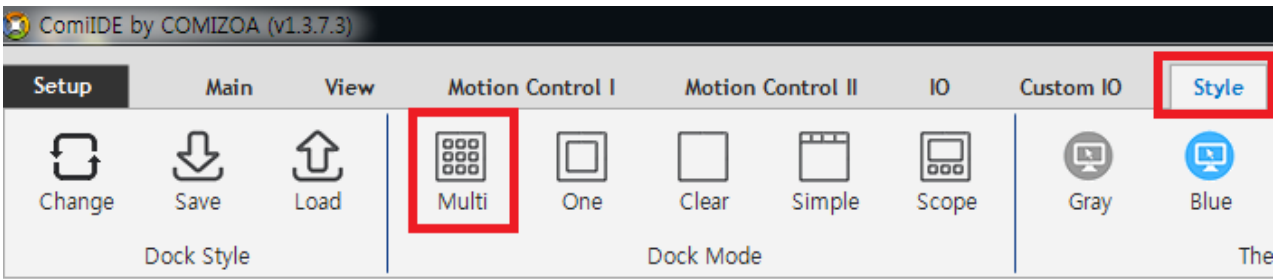
| | |
|-------------------|---|
| | 1 |
| | 2 |
| Servo On | 3 |
| Motor State | 3 |
| | 4 |
| | 5 |
| | 7 |

× ComiIDE

- ComiIDE



, Style - Multi



Device List
⌵ ×

Network Motion

- [0] COMI-LX554 (EtherCAT)
- [1] COMI-LX554 (EtherCAT)

| Item | Details | Compatibility |
|----------|----------|---------------|
| Firmware | 1,71,0,0 | OK |
| Driver | 1,5,0,1 | OK |
| Library | 1,5,0,3 | OK |
| | | |
| | | |

- DeviceList , Load .
- Device가 , .

Clear
Log Level
1 : Log only when error occurred
▼

Find

| Time | Channel | Code | Command | Info |
|--------------|---------|------|---------------|----------|
| 23:21:32,750 | netID 0 | 100 | EtherCAT Load | Complete |
| 23:21:32,773 | netID 1 | 100 | EtherCAT Load | Complete |
| | | | | |
| | | | | |
| | | | | |
| | | | | |
| | | | | |
| | | | | |
| | | | | |
| | | | | |

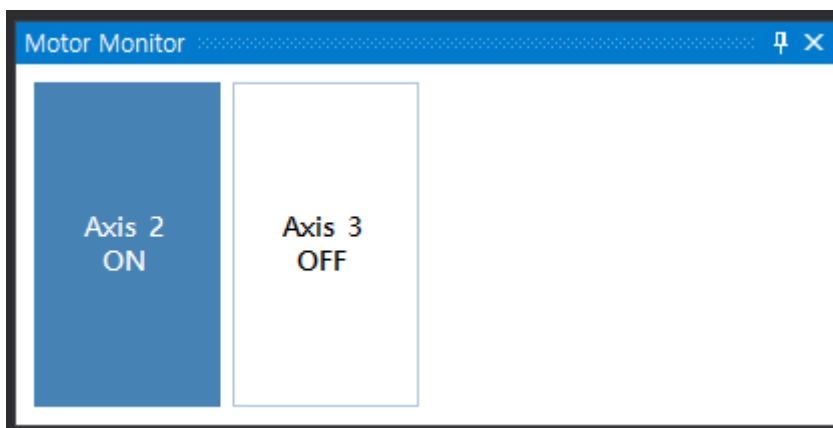
- LogView Load 가 .
- LogView Log View .

Servo On

- Motor Monitor 가 .



- Servo_On .



- Motor Monitor Motor ServoOn Stop .

- Motor Monitor **Motor Monitor** .

Motor State

- Motor가 , .

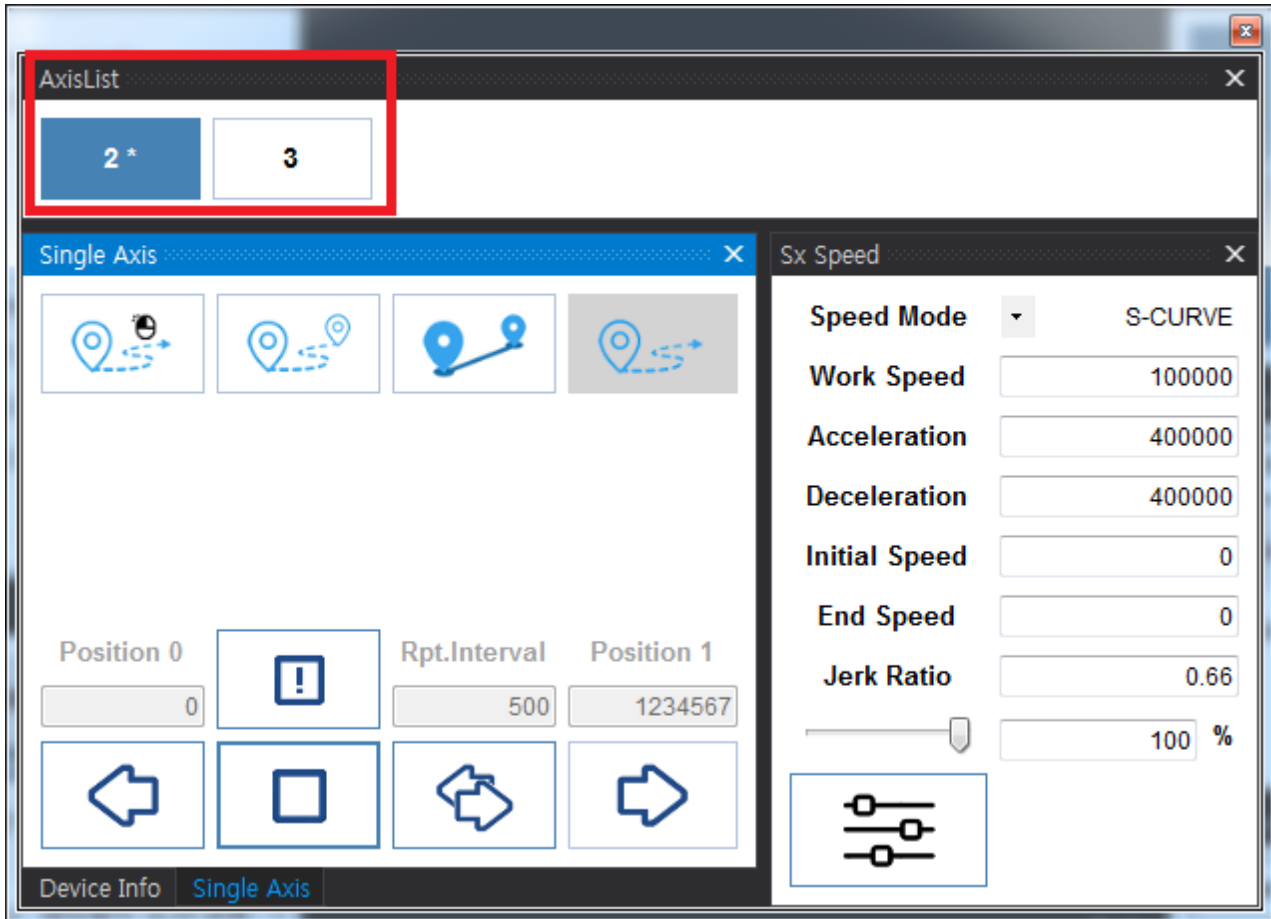


- Motor 가 Alarm , 가
- , Servo-On .
- MIO Monitor Motor가 가 .

| MIO Monitor | | | | | | | |
|-------------|--------|------|------|------|------|------|--------|
| Emergency | RDY | ALM | WARN | NEL | PEL | ORG | INP |
| Axis 2 | Orange | Grey | Grey | Grey | Grey | Grey | Orange |
| Axis 3 | Orange | Grey | Grey | Grey | Grey | Grey | Orange |

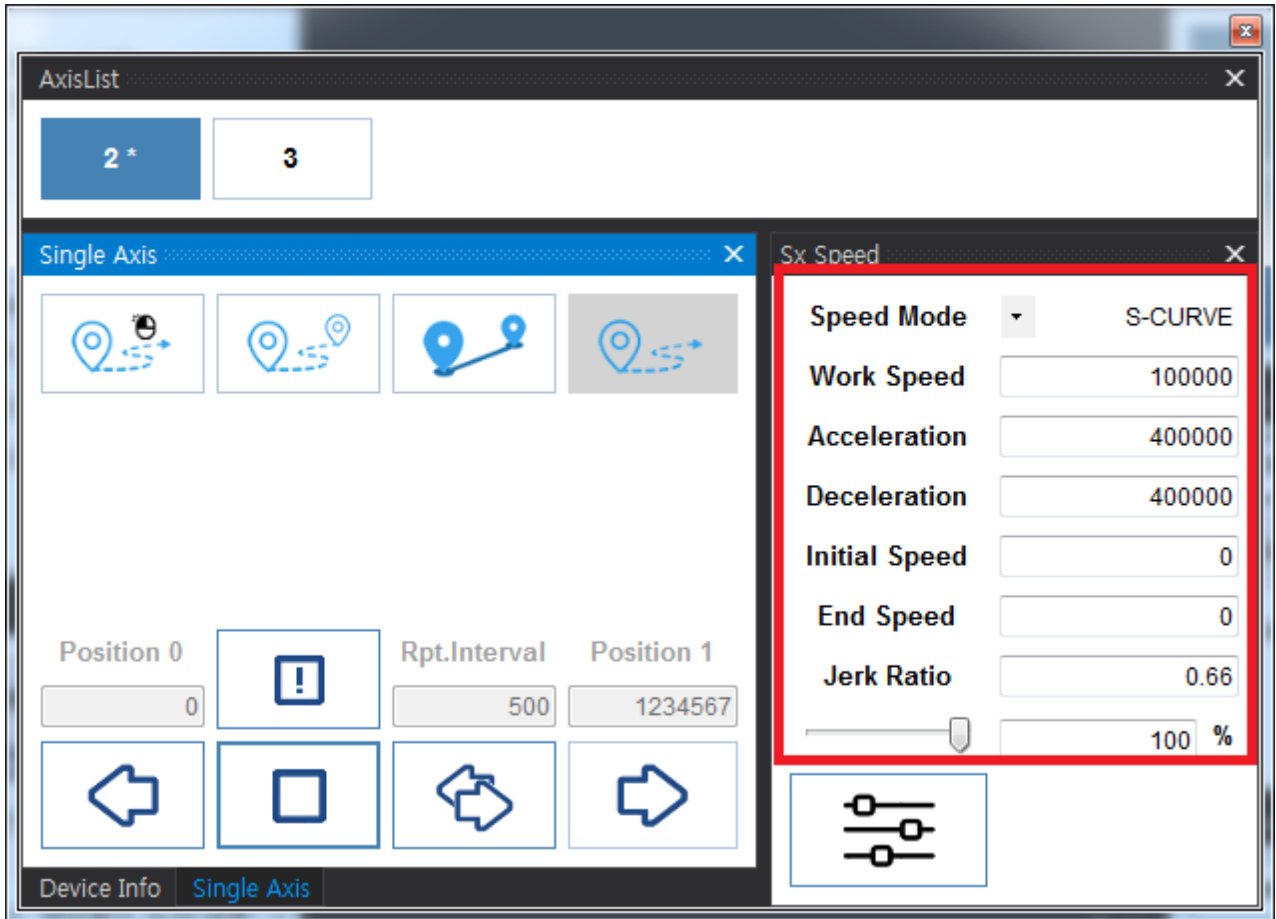
- , Alarm , PEL (Limit+) / NEL(Limit-) 가
- Ready , RDY 가 .
- MIO Monitor **MIO Monitor** .

- AxisList .

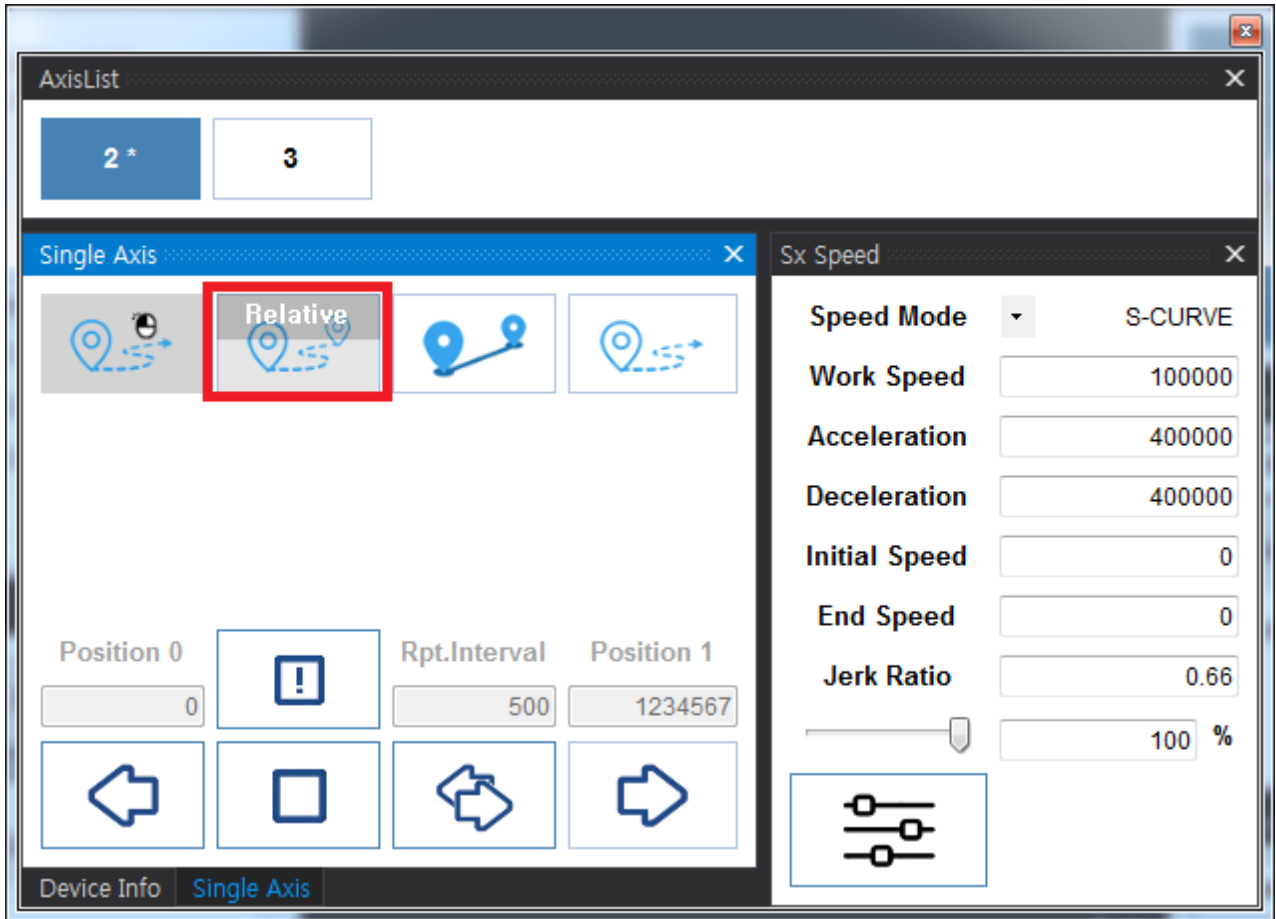


- AxisList

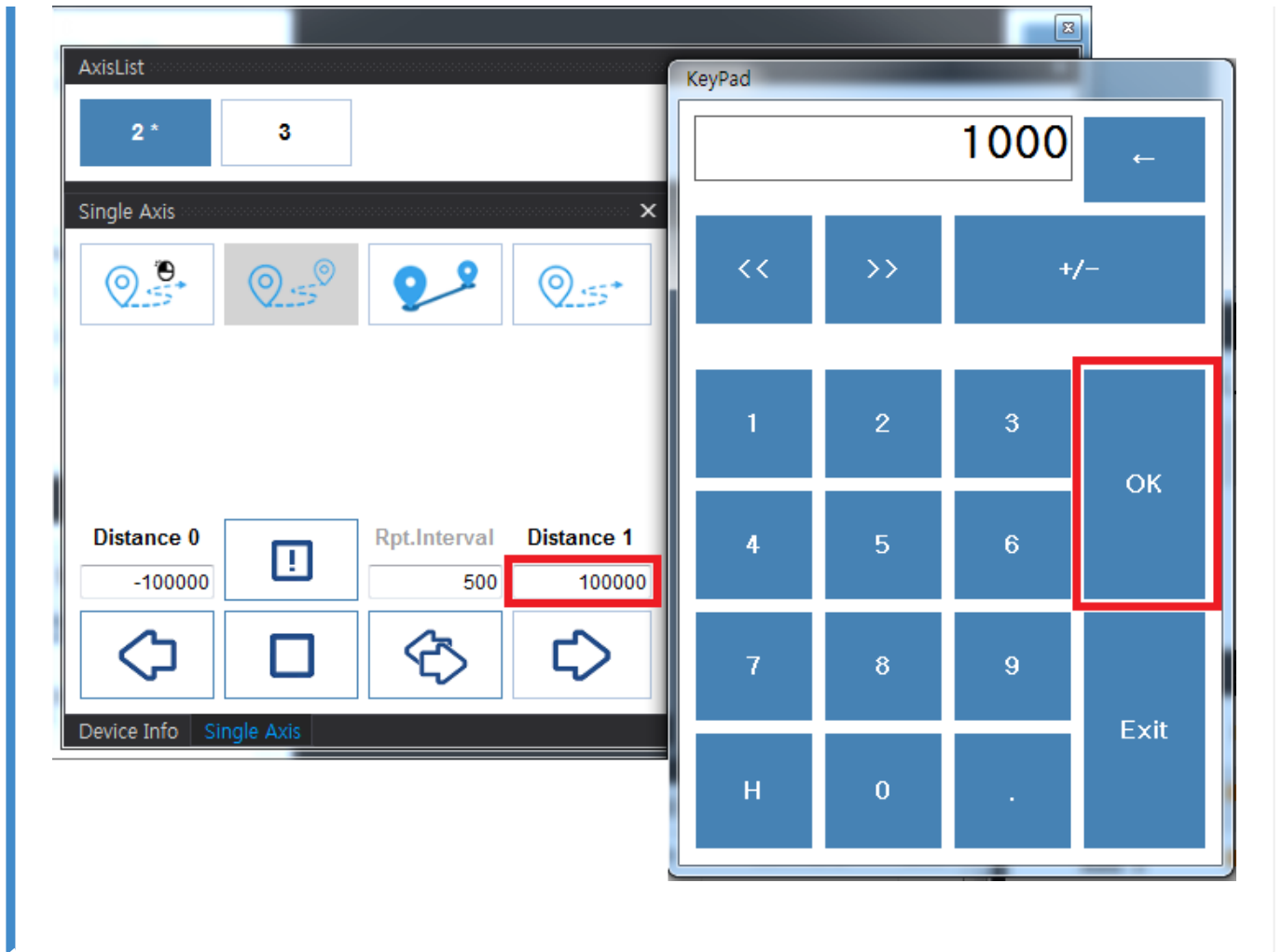
AxisList



• 가 ,



- Distance



- Move

- **PCI_Pulse TroubleShooting**
- **NEMO TroubleShooting**

1)

From:

<https://www.comizoa.com/info/> - -

Permanent link:

https://www.comizoa.com/info/doku.php?id=application:comiide:25_begin:10_test_motion&rev=1544441558

Last update: **2024/07/08 18:23**