

Intro 1
..... 1
..... 2
Info 4

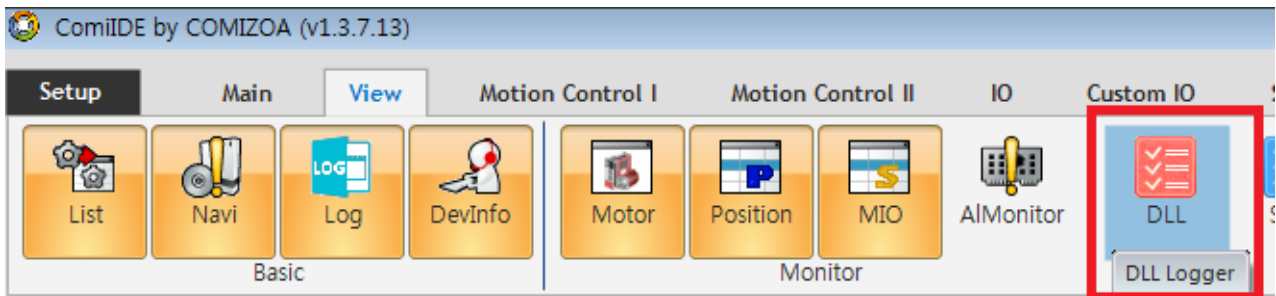
DLL Logger

x DLL Logger






Intro

- DLL API Logging
- Log Level, Log Tpye, Target API
- Flatform

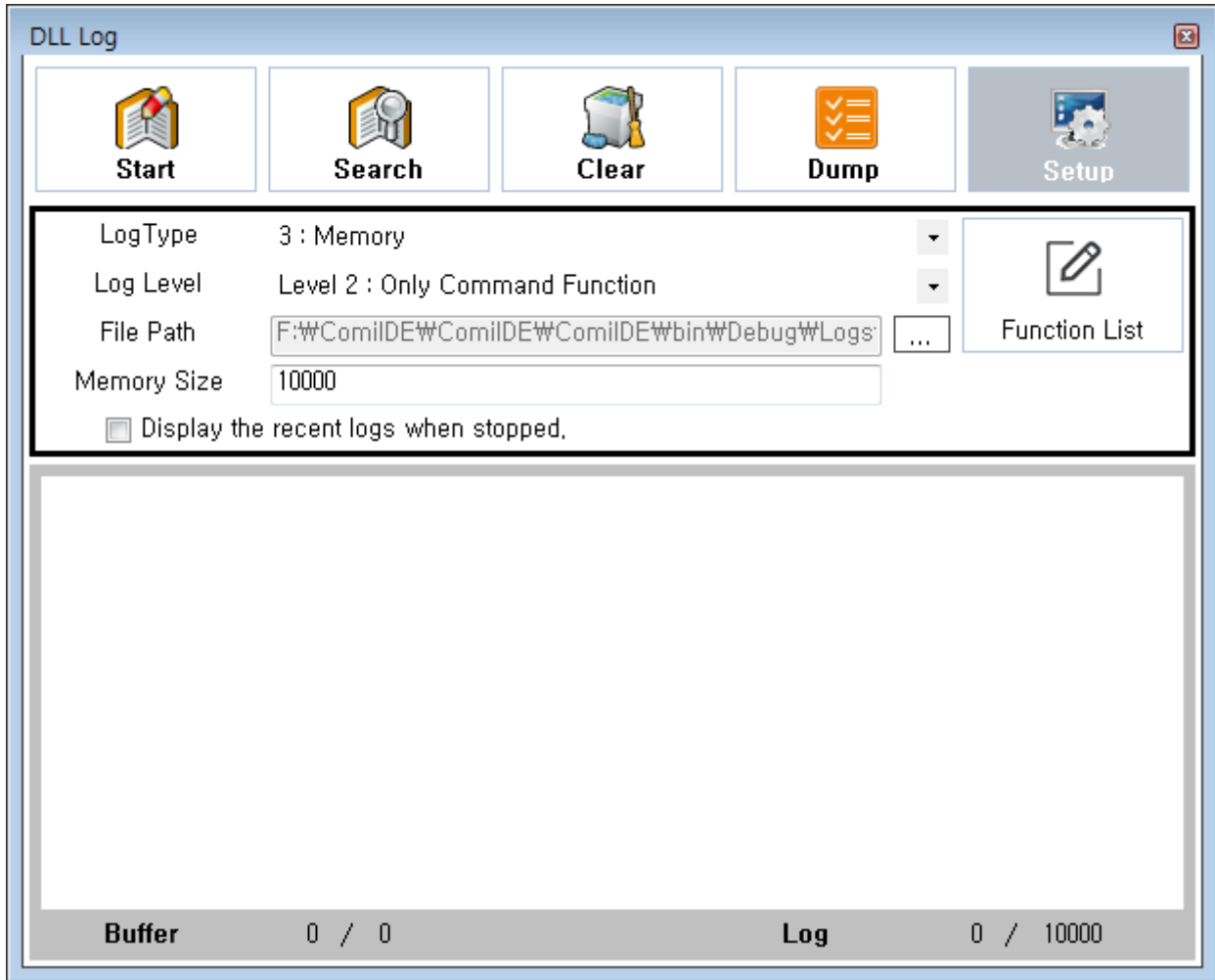
• View - DLL



DLL Log

 **Start**  **Search**  **Clear**  **Dump**  **Setup**

Buffer 0 / 0 **Log** 0 / 10000



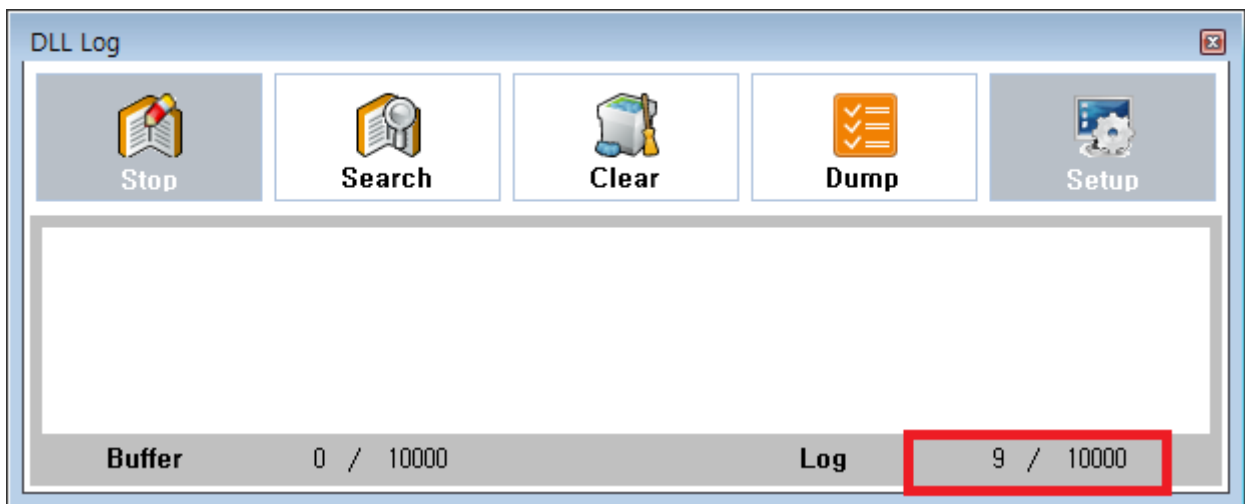
- **Setup** Logging Option .
- Setup .

- Log Type
 - File : .
 - TraceViewer : Log
 - LogViewer : (DLL Logger) Log
 - **Memory : Memory Memory Size Queue**
 - **Dump** ,
- Log Level
 - Disable : No Debug Logging
 - Only Error : Logging
 - Only Command Function : Error Set Command Logging
 - Except Some or Included : Excluded Command Included Get Logging
 - All Function : Excluded Logging

- File Path : LogType file Memory .
-
- Memory Size : LogType Memory
 - Line . “ 1000 ” 1000 가 .
- Display the recent logs when stopped.
 - LogType LogView , Queue
 - log Viewer .
- **Start** Logging .
- Memory **Dump** File Log 가 Viewer file
- LogType LogView , **Stop** Log
- 가 .

Info

- LogType LogView , , Log Count 가



- , Log 가 Viewer buffer

• Search

Find Option

The screenshot shows the DLL Logger application window. At the top, there are five buttons: Start, Search, Clear, Dump, and Setup. The main area displays a log of system events. A search bar at the bottom contains the text 'ecmSxCtl_SetSvon'. Below the search bar, there are three buttons: 'Search ↓', 'Search ↑', and 'Search All'. The search results are displayed in a separate window titled 'Find result - 4 hits', listing four log entries where the function 'ecmSxCtl_SetSvon' was called.

DLL Log

Start Search Clear Dump Setup

```
[16:22:18:975] <000004726> <ENTER> ecmSxCtl_SetSvon (0x0, 2, 1, 0xa5e4a0):
[16:22:19:058] <000004726> <EXIT> ecmSxCtl_SetSvon(): Ret=46732, Err=0

[16:22:19:749] <000006472> <ENTER> ecmSxMot_Stop (0x0, 2, 1, 1, 0x2d86c6c):
<000006472> After Stop: CP=0, FP=0, Mst=0, Flg=0x1037, Dl=0x208
[16:22:19:749] <000006472> <EXIT> ecmSxMot_Stop(): Ret=46915, Err=0

[16:22:19:755] <000006476> <ENTER> ecmSxCtl_SetSvon (0x0, 2, 0, 0xa5e4a0):
[16:22:19:756] <000006476> <EXIT> ecmSxCtl_SetSvon(): Ret=46916, Err=0

[16:22:22:692] <000013678> <ENTER> ecmSxCtl_SetSvon (0x0, 3, 1, 0xa5e4a0):
[16:22:22:771] <000013678> <EXIT> ecmSxCtl_SetSvon(): Ret=47649, Err=0
```

Buffer 0 / 10000 Log 172 / 10000

ecmSxCtl_SetSvon Search ↓ Search ↑ Search All

Find result - 4 hits

```
[16:22:18:975] <000004726> <ENTER> ecmSxCtl_SetSvon (0x0, 2, 1, 0xa5e4a0):
[16:22:19:755] <000006476> <ENTER> ecmSxCtl_SetSvon (0x0, 2, 0, 0xa5e4a0):
[16:22:22:692] <000013678> <ENTER> ecmSxCtl_SetSvon (0x0, 3, 1, 0xa5e4a0):
[16:25:50:204] <000526660> <ENTER> ecmSxCtl_SetSvon (0x0, 2, 1, 0xa5e4a0):
```

[DLL_logger](#)

From: <https://www.comizoa.com/info/> - -

Permanent link: https://www.comizoa.com/info/doku.php?id=application:comiide:monitor:dll_logger&rev=1625641595

Last update: **2024/07/08 18:23**