

Table of Contents

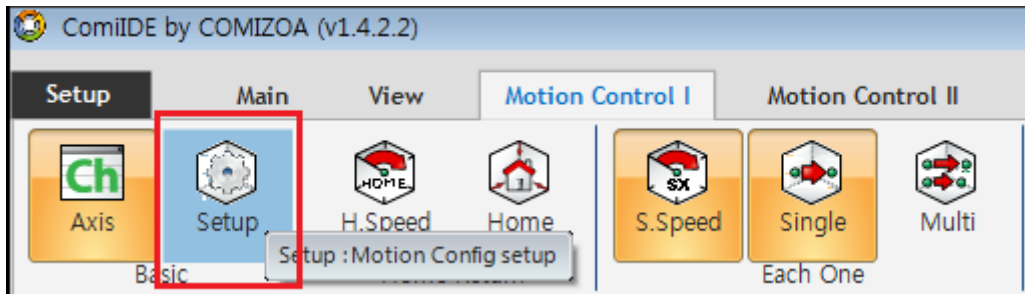
Synopsis	1
Test	1

Unit Distance & Unit Speed

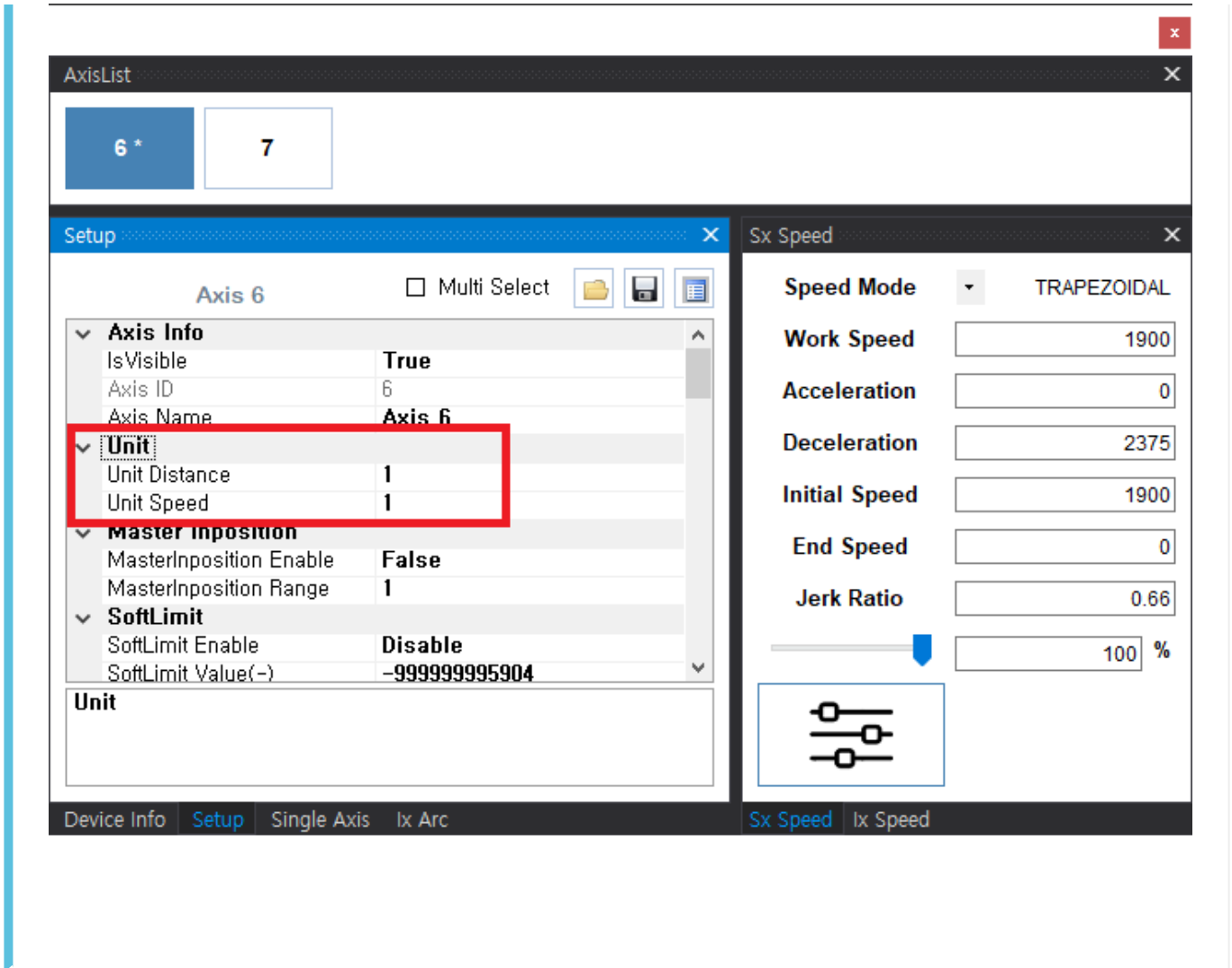
Synopsis

UnitDistance & UnitSpeed

Test



- Motion Control I 탭의 Setup 실행



- 축 선택 후 Unit 탭에서 UnitDistance, UnitSpeed 값 입력

Reset	C.Position	F.Position	C.Speed	F.Speed	Torque
Axis 6	0.00	0.00	0	0	0.00
Axis 7	0	0	0	172	0

- UnitDistance가 1이 아닌 경우, Position이 소수점으로 표시됩니다.

From:

<https://www.comizoa.com/info/> - -

Permanent link:

https://www.comizoa.com/info/doku.php?id=application:comiide:motion_setup:10_unit&rev=1624507328

Last update: **2024/07/08 18:23**