

..... 1

..... 1

..... 2

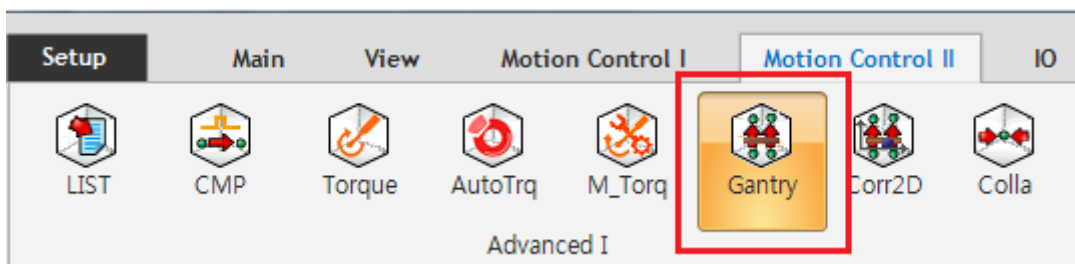
..... 4

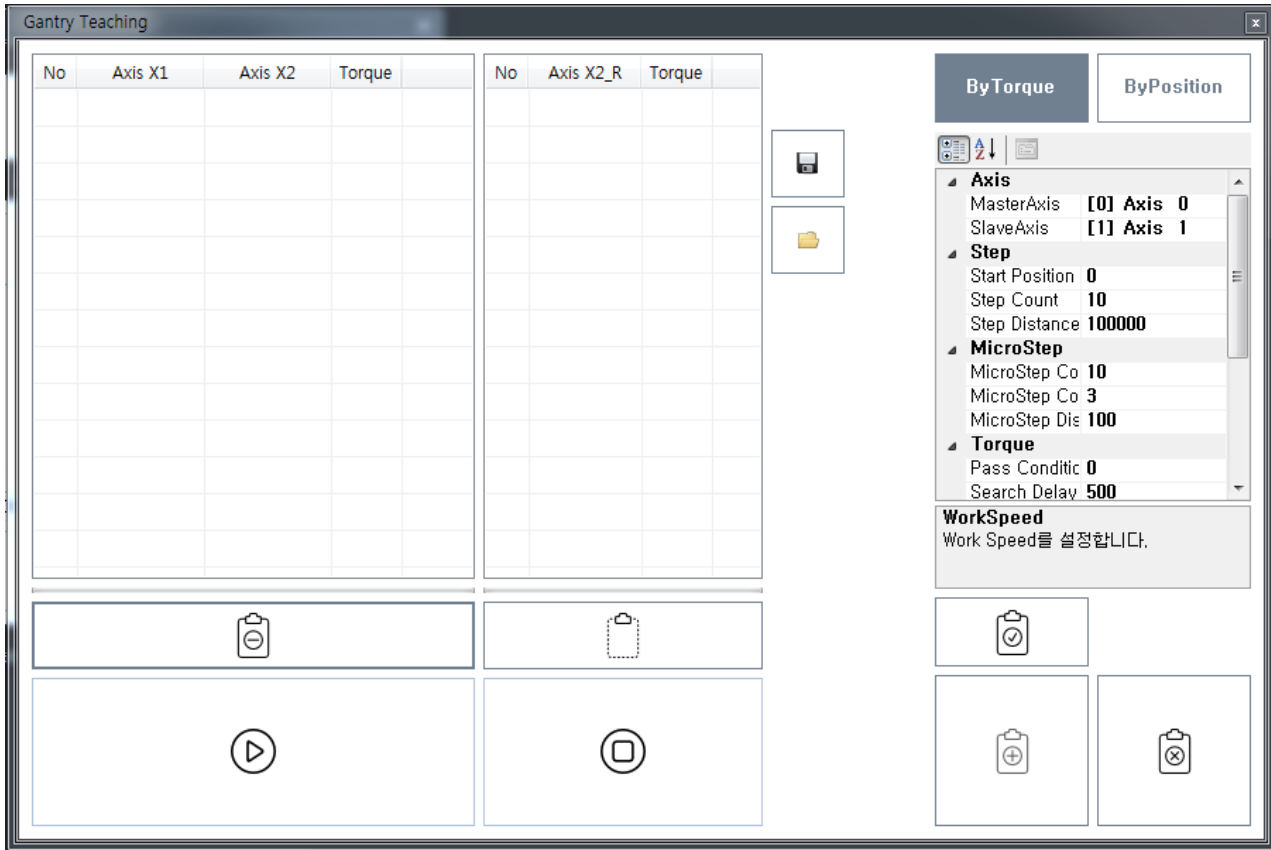
Gantry Teaching

x

- Master Slave , Step Distance MicroStep Distance
- Gantry Step Distance , MicroStep , 가 가
- 가 Master Slave 가
- Step Count table
- Table , Master-Slave Master
, Slave 가
- Table
 - (1000, 990), (2000, 994) , 가 1500
, Slave 992

- ComilDE Gantry Gantry Teaching





Axis

- Master Axis : Gantry Master
- SlaveAxis : Gantry Slave

Step

- Start Position : Teaching
 - Start Position 0
- Step Count, Step Distance :
 - Step Count , Step Distance ,
 - StepCount * StepDistance 가 ,
 - , Step Count = 10, Step Distance = 100 , 1,000

MicroStep

- MicroStep Count :
 - + / - MicroStep Count ,
 - MicroStep Count , Step

- MicroStep CountLimit : MicroStep Torque가 CountLimit 가
 - , CountLimit = 3 1,2,3 1.2, 2.1, 2.5 ,
 - , + - .
- MicroStep Distance : MicroStep
 - 가 .

Torque

- Pass Condition : Pass Condition Step 가 ,
- Search Delay : Micro Step Delay .
- Torque Limit : , .
- Torque Warning : , Warning

The screenshot shows the Gantry Teaching software interface. It features two data tables and a configuration panel on the right.

No	Axis 0	Axis 1	Torque
0	0	-300	1
1	20000	19800	0,8
2	40000	39800	0,2
3	60000	59800	0,6
4	80000	79900	1,6
5	100000	99900	1,1
6	120000	119900	1,1
7	140000	139900	1
8	160000	159900	0,8
9	180000	179900	0,3
10	200000	199900	2

No	Axis 1	Torque
0	0	13,7
1	100	36,9
2	200	40,8
3	300	45
4	-100	6
5	-200	2,4
6	-300	1
7	-400	5
8	-500	7,3
9	-600	9,8

Configuration Panel (ByTorque):

- Start Position: 0
- Step Count: 10
- Step Distance: 20000
- MicroStep:
 - MicroStep Count: 10
 - MicroStep CountLim: 3
 - MicroStep Distance: 100
- Torque:
 - Pass Condition: 0
 - Search Delay: 500
 - Torque Limit: 60
 - Torque Warning: 40
- Speed

Torque Warning: 토크 확인시 경고 레벨을 설정합니다.

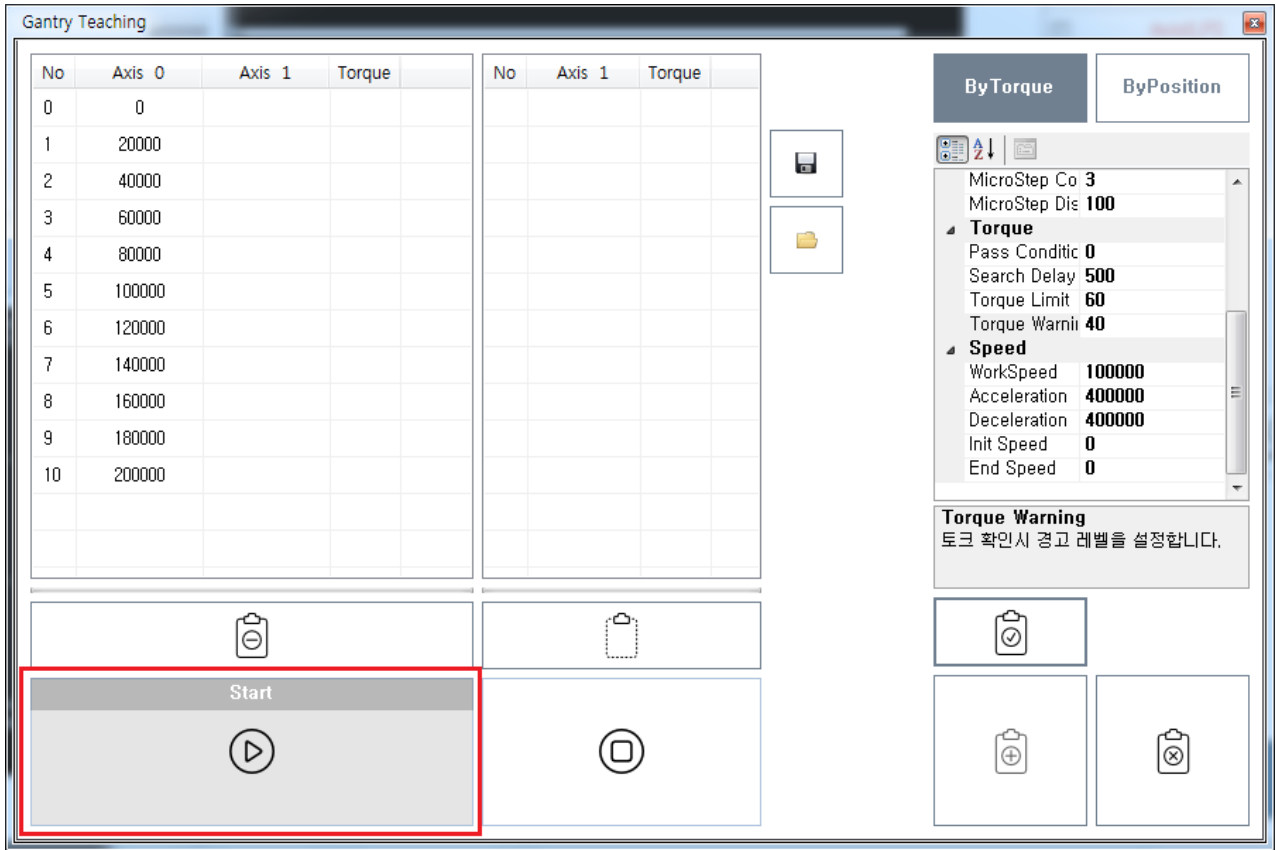
Speed

- Teaching .

- ApplySetup

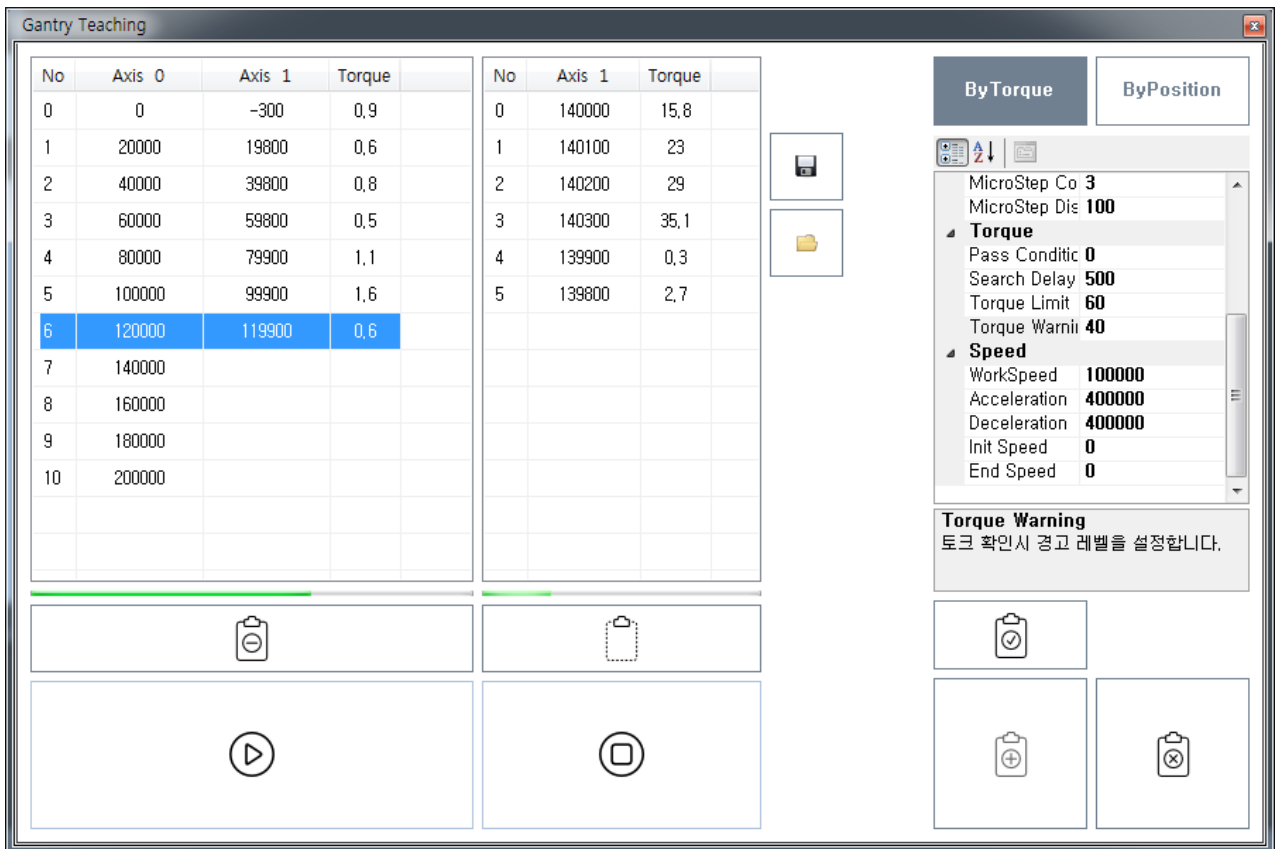
The screenshot displays the 'Gantry Teaching' software interface. On the left, there are two data tables for recording teaching points. The first table has columns for 'No', 'Axis 0', 'Axis 1', and 'Torque'. The second table has columns for 'No', 'Axis 1', and 'Torque'. Below these tables are buttons for saving and deleting data. On the right, there is a configuration panel with two tabs: 'ByTorque' (selected) and 'ByPosition'. The 'ByTorque' tab shows settings for 'MicroStep CountLim' (3), 'MicroStep Distance' (100), 'Torque' (Pass Condition: 0, Search Delay: 500, Torque Limit: 60, Torque Warning: 40), and 'Speed' (WorkSpeed: 100000, Acceleration: 400000, Deceleration: 400000, Init Speed: 0, End Speed: 0). Below the settings is a 'Torque Warning' message in Korean: '토크 확인시 경고 레벨을 설정합니다.' At the bottom of the configuration panel, the 'Apply Setup' button is highlighted with a red rectangle.

- Start Teaching



• Teaching

Teaching



- Teaching
 - Register To Axis , Master-Slave

From:

<https://www.comizoa.com/info/> - -

Permanent link:

https://www.comizoa.com/info/doku.php?id=application:comiide:tool:gantry:20_gantry_teaching&rev=1542947173

Last update: **2024/07/08 18:23**