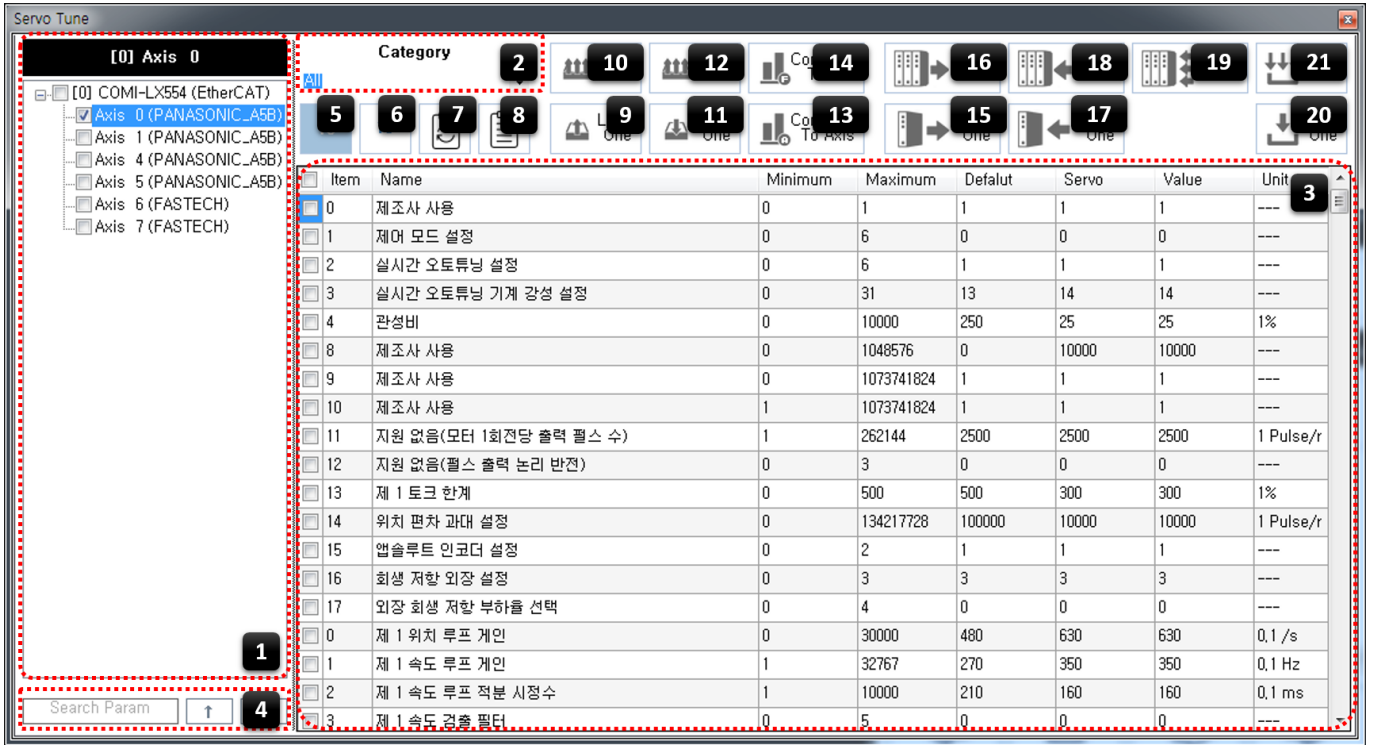


Check 1

Feature Introduction

× ServoTunes



1 AxisList

- LoadOne / SaveOne / ReadOne One
- LoadAll / SaveAll / ReadAll All

Check

[2] Axis 4

- [0] COMI-LX554 (EtherCAT)
 - Axis 0 (PANASONIC_A5B)
 - Axis 1 (PANASONIC_A5B)
 - Axis 4 (PANASONIC_A5B)
 - Axis 5 (PANASONIC_A5B)
 - Axis 6 (FASTECH)
 - Axis 7 (FASTECH)

- ReadOne "Axis 4" ()
- ReadAll "Axis 0" ()

2 Category

- Category

- Category

3 Parameter List

- - Minimum : 가
 - Maximum : 가
 - Default : ¹⁾
 - **Servo :**
 - **Value : ServoTunes**
 - 'Servo' Write
 - Value cell

4 Search Param

-

5 10 6 16

- 10 16
- Minimum, Maximum, Default, Servo, Value

7 Param Reset

- 'Servo' / 'Value'
- , Read

8 View Details

- Index, DataType, DataSize

9 LoadOne 10 LoadAll

- ²⁾
- 가
- ex) Omron / Panasonic

11 SaveOne 12 SaveAll

-
- Read

13 CompareToAxis

-

14 CompareToFile

- SaveOne

15 ReadOne 16 ReadAll

- Load 'Value' 'Servo'

17 WriteOne

- Value ³⁾

18 Write 1:N

- Value 가 가

19 Write N:N

- Value

20 EepOne 21 EepAll

- 가 EEPROM

× **Warning!**
ServoTunes

1)

2)

ServoTunes 가

3)

From:
<https://www.comizoa.com/info/> - -

Permanent link:
https://www.comizoa.com/info/doku.php?id=application:comiide:tool:servotunes:10_feature_introduction&rev=1541658984

Last update: **2024/07/08 18:23**