

# Table of Contents

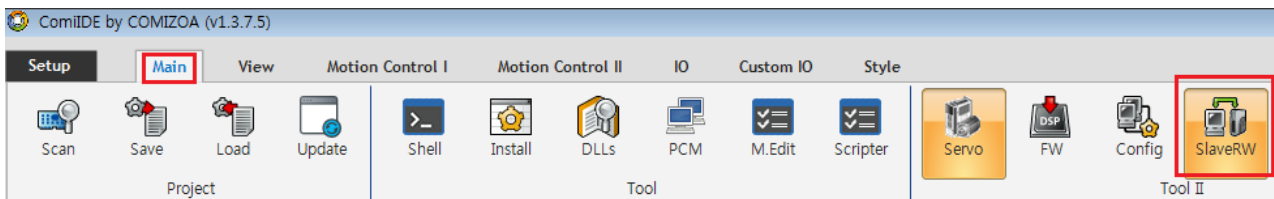
|                   |   |
|-------------------|---|
| 시작하기 .....        | 1 |
| Update 진행하기 ..... | 1 |

# EEPROM Update

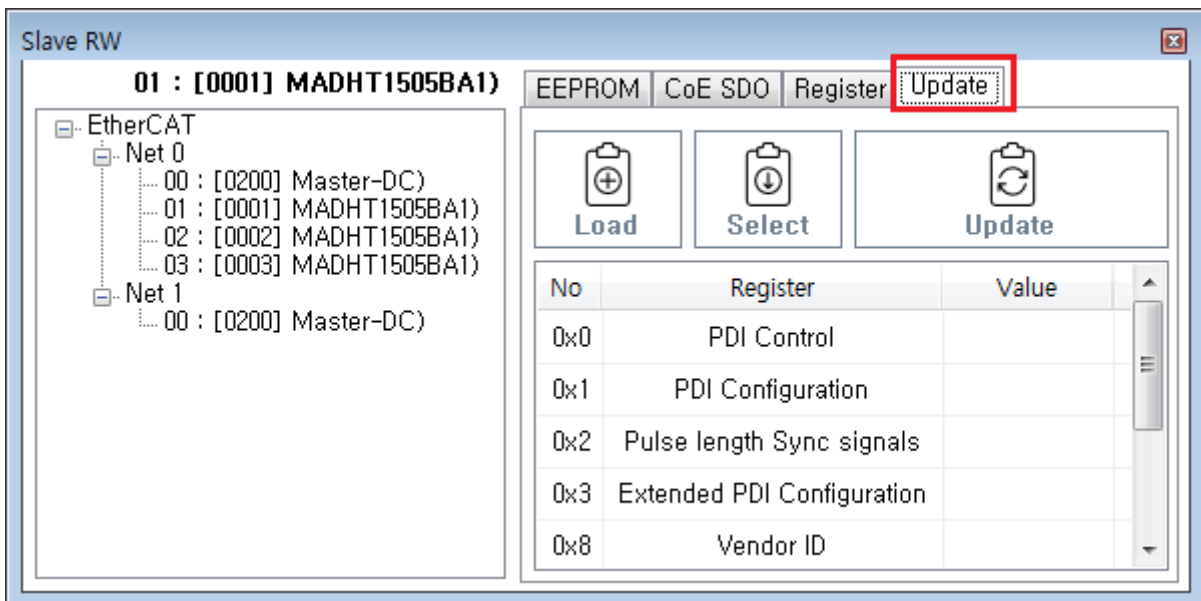
× EtherCAT Slave의 EEPROM Update에 대한 안내 페이지입니다.

## 시작하기

- ComiIDE의 Main - Tool II SlaveRW 을 클릭하여 SlaveRW를 실행

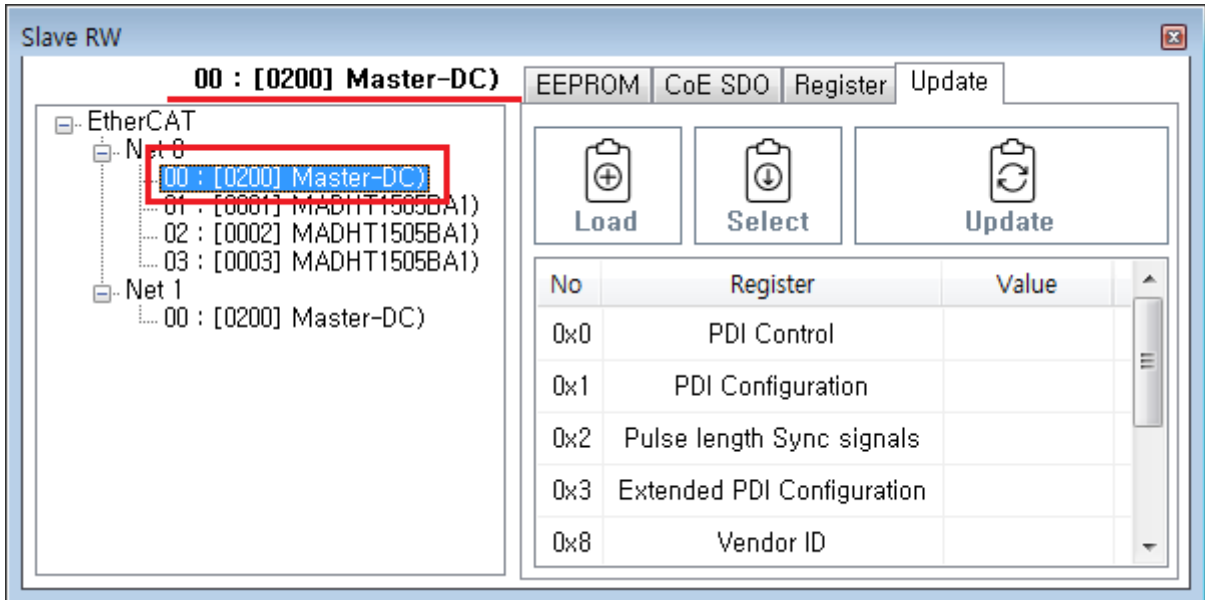


- Update 을 클릭하여 Update 메뉴 실행

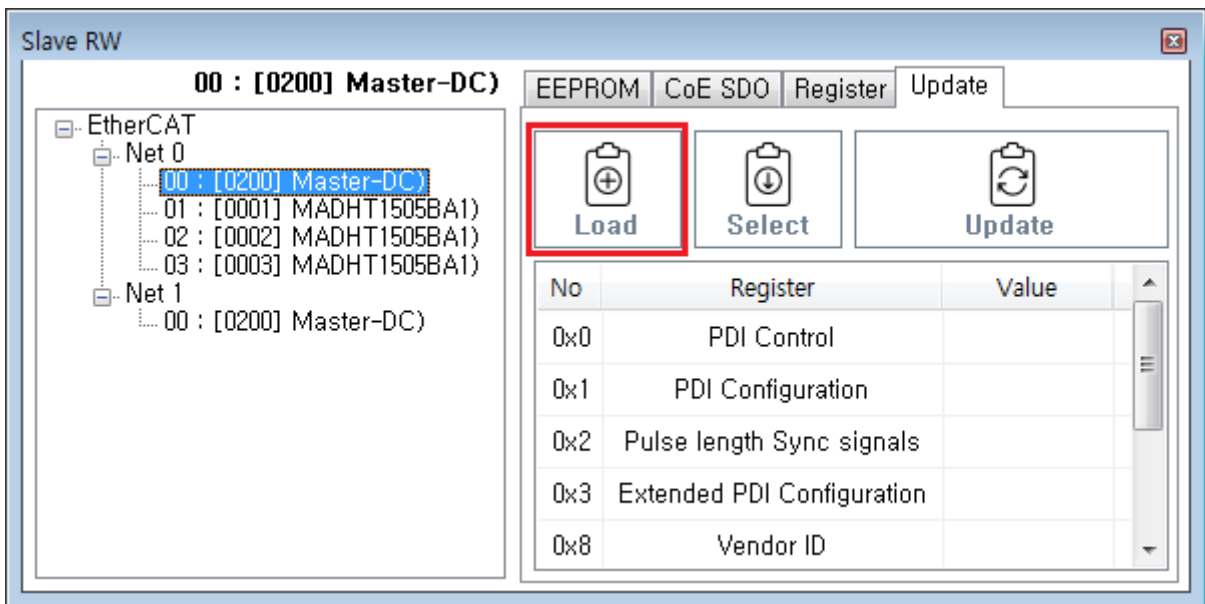


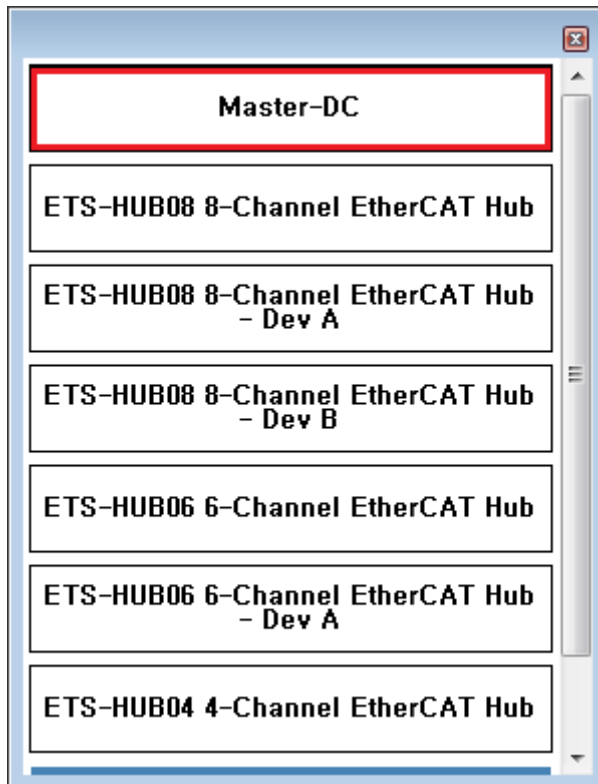
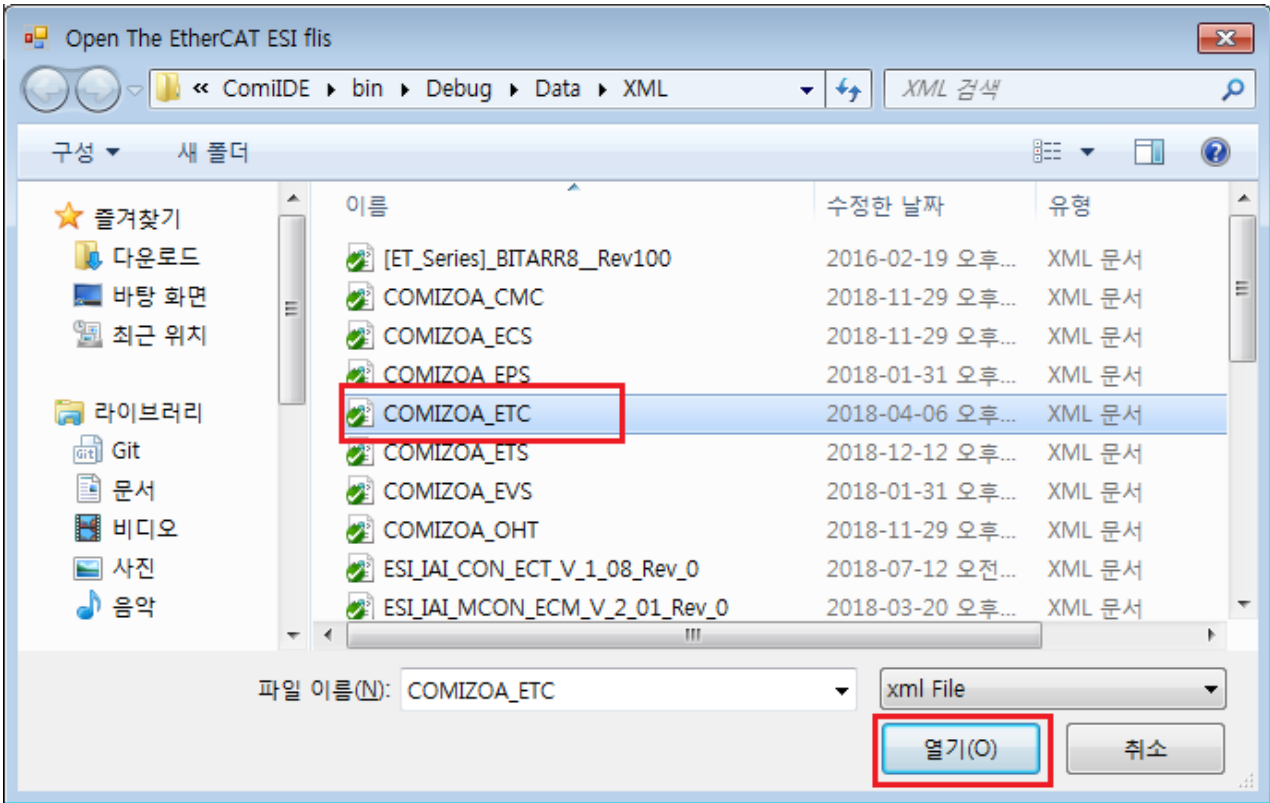
## Update 진행하기

- SlaveList 에서 Update 진행할 Slave 선택
  - 이후 안내에서는 MASTER-DC 사용

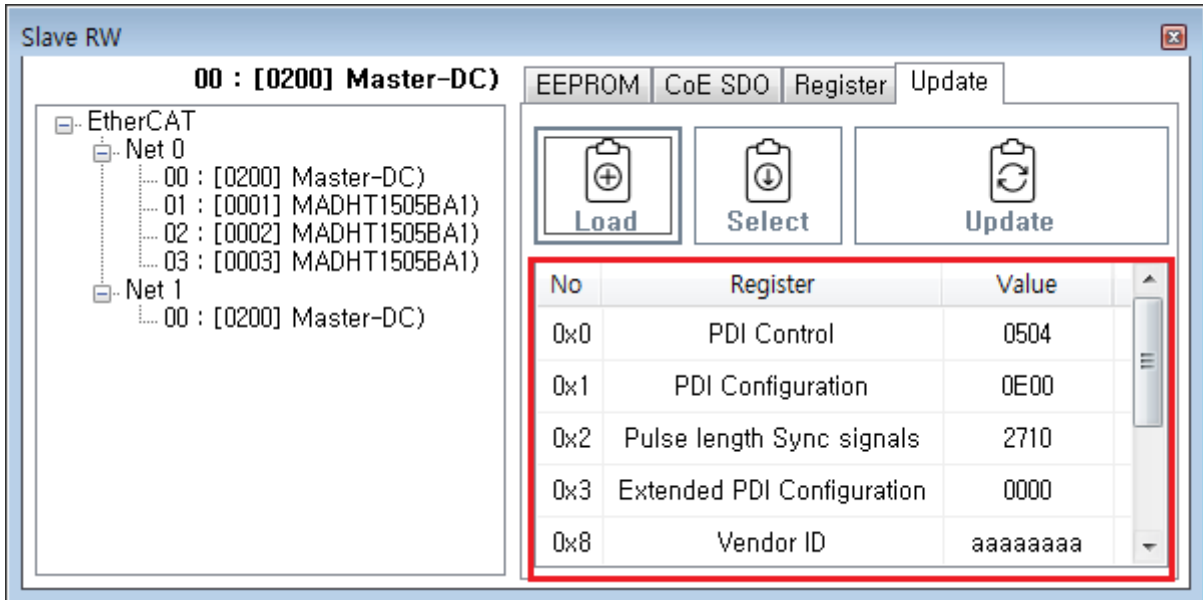


- Load 을 클릭하여 해당 slave의 xml을 선택
- xml에 포함된 Slave List 에서 Slave 선택

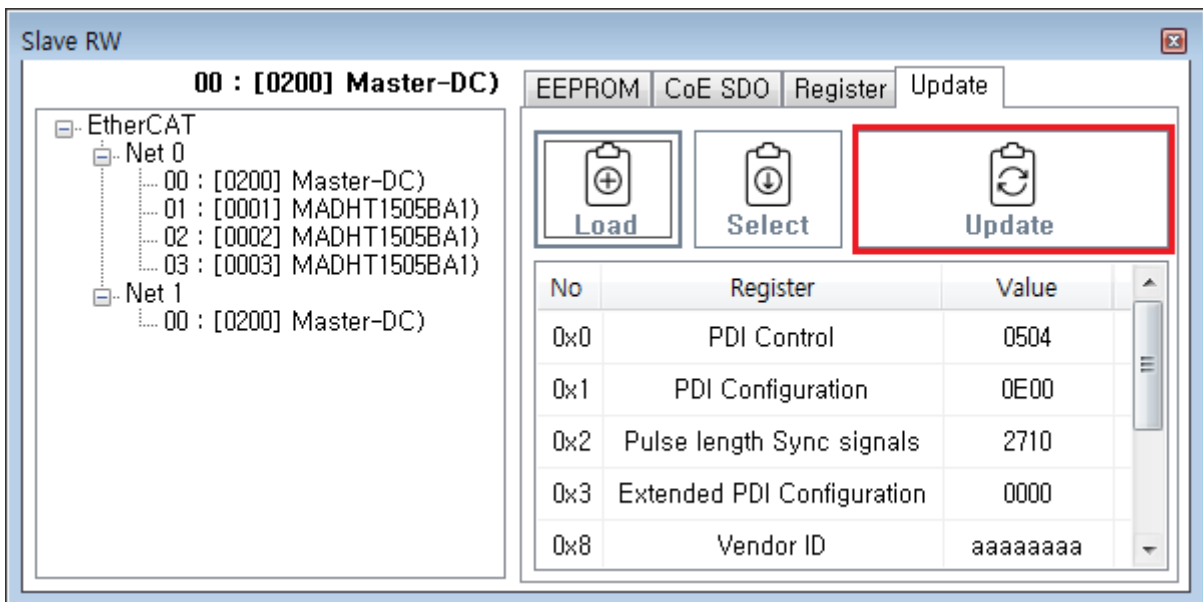




- Update할 정보를 확인합니다.



- Update 을 클릭하여 Update 를 진행합니다.



- LogView 를 통해 Update 성공 여부를 확인합니다.

| Time         | Channel  | Code | Command             | Info    |
|--------------|----------|------|---------------------|---------|
| 17:11:47,389 | Slave RW | 100  | <u>EepromUpload</u> | Success |
|              |          |      |                     |         |
|              |          |      |                     |         |

From:  
<https://www.comizoa.com/info/> - -

Permanent link:  
<https://www.comizoa.com/info/doku.php?id=application:comiide:tool:slaverw:update&rev=1559017432>

Last update: **2024/07/08 18:23**