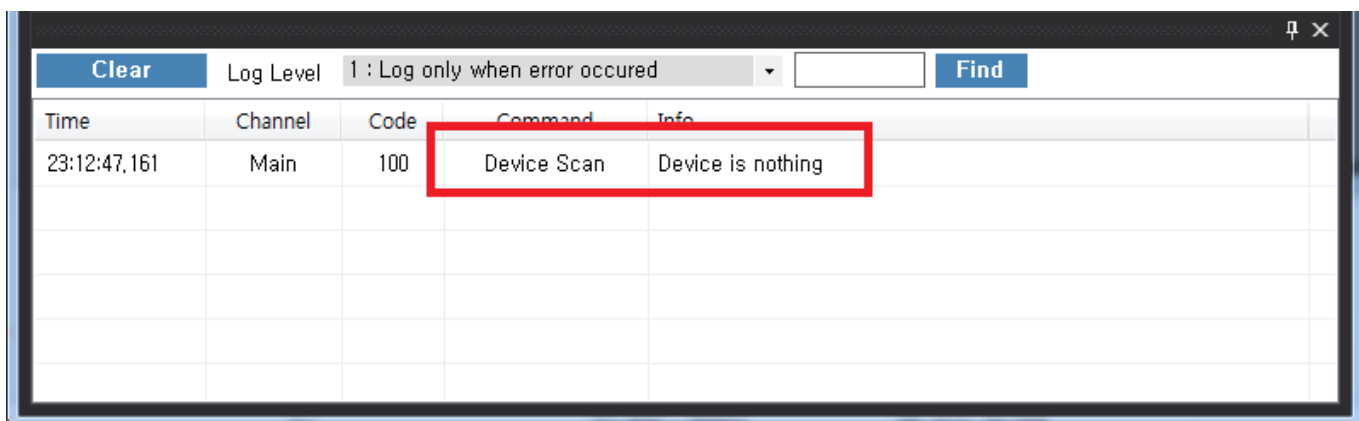
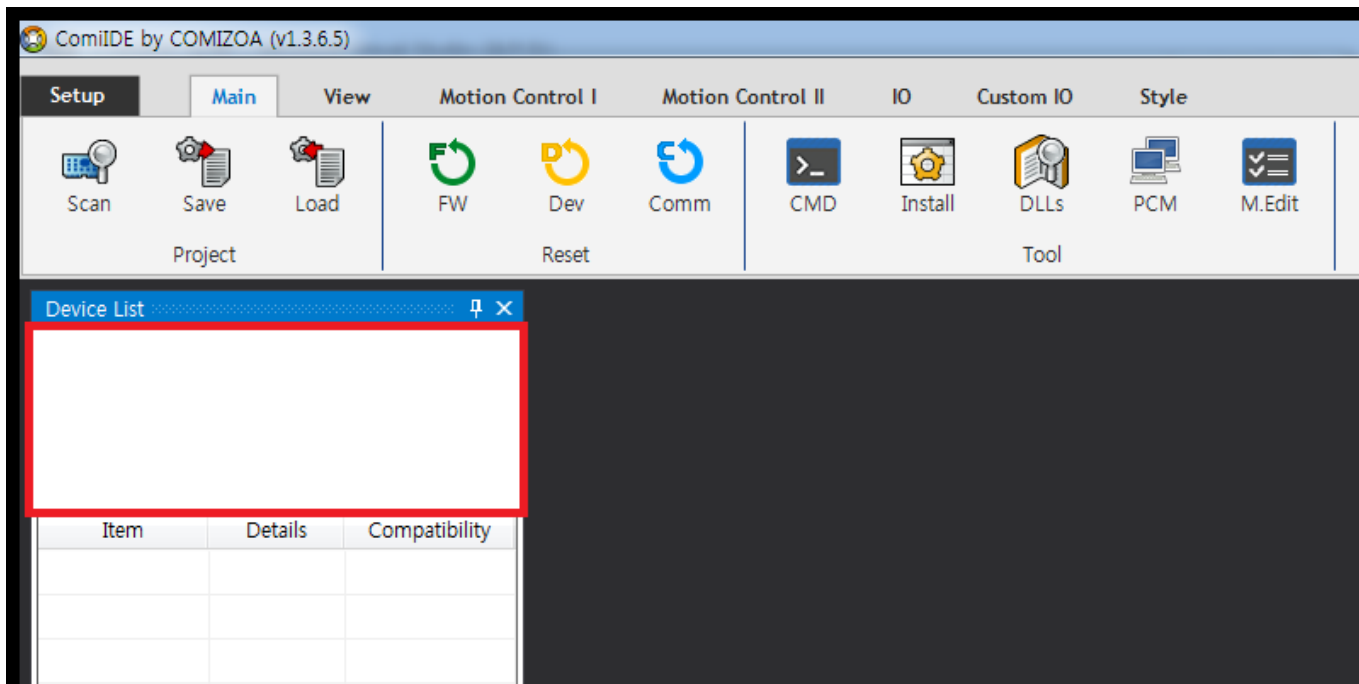

Event	1
Case 1	1
Case 2	3
Cause	3
Solution	3
Case 3	3
Cause	3
Solution	4
Case 4	4
Cause	4
Solution	4
Case 5	4
Cause	4
Solution	5

Event

- Device가



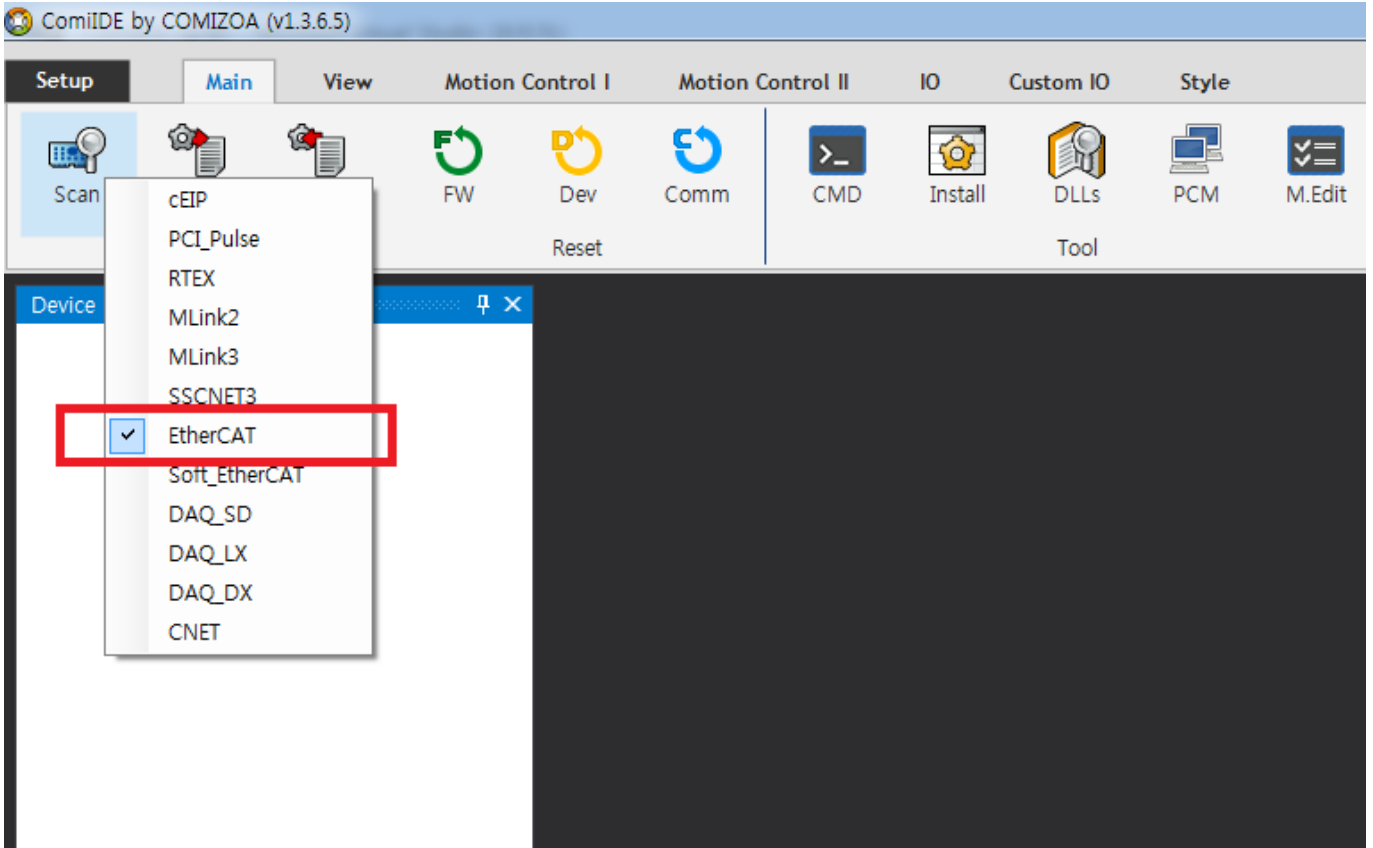
Case 1

Cause

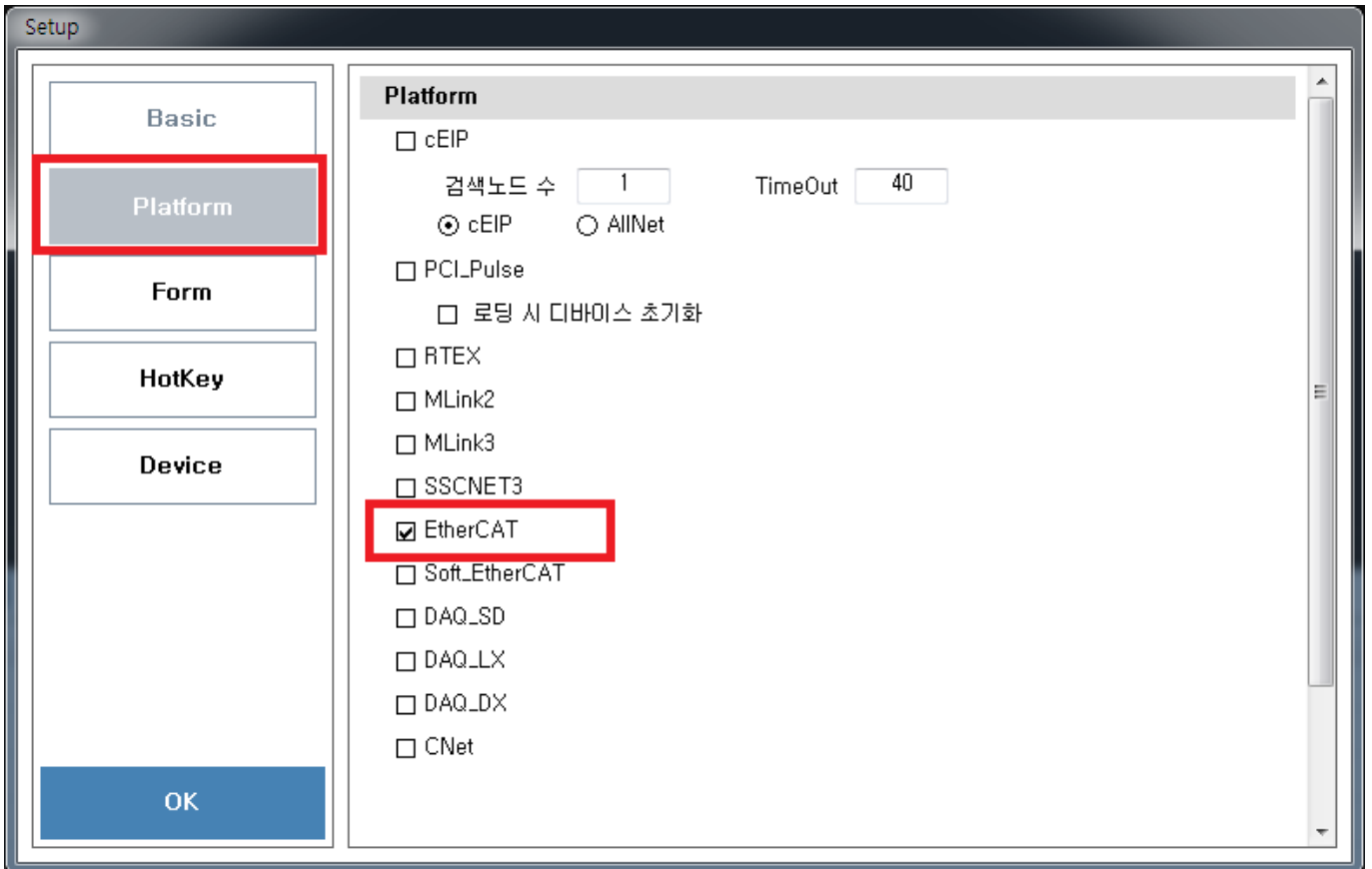
- ComiIDE Platform

Solution

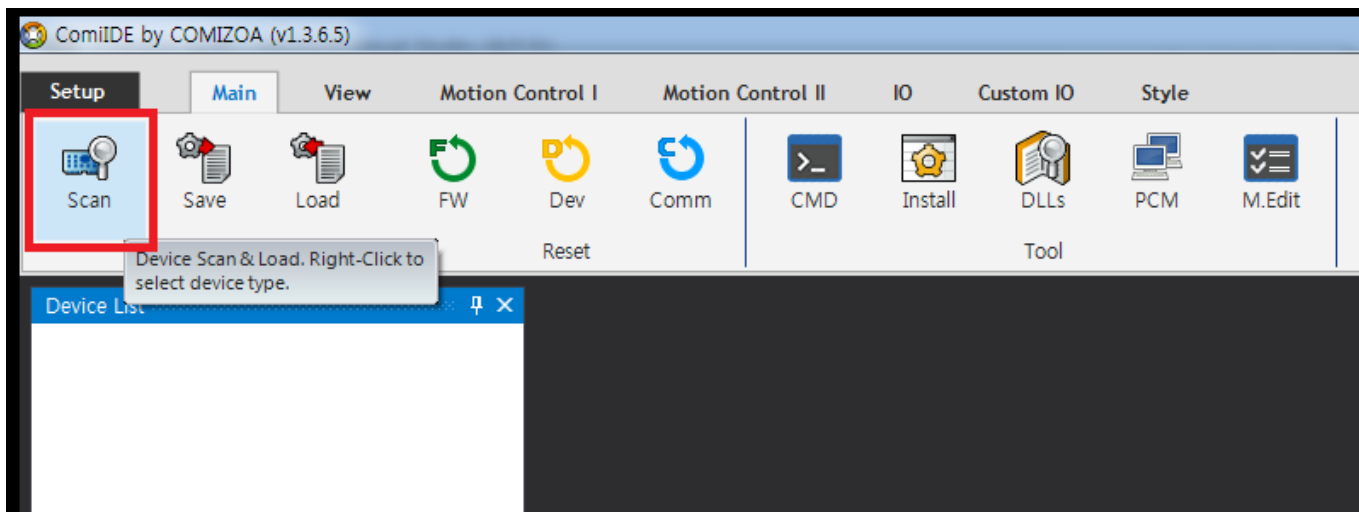
- ComiIDE Platform
 - 'Scan' Platform



- 'Setup' 'Device' Tab Platform



- 'Scan' SCAN



Case 2

Cause

- Driver 가

Time	Channel	Code	Command	Info
00:15:04,567	EtherCAT	100	Driver Check	Driver is not installed
00:15:05,747	Main	100	Device Scan	Device is nothing

Solution

- Driver

Case 3

Cause

- DLL (Library)

Time	Channel	Code	Command	Info
00:50:38,542	EtherCAT	100	DLL Check	DLL not found : ComiEcatSdk,DLL
00:50:39,735	Main	100	Device Scan	Device is nothing

Solution

- C:\Windows\System32 ¹⁾ DLL

Case 4

Cause

- (OS : x86 / x64) DLL

Time	Channel	Code	Command	Info
09:19:10,649	EtherCAT	100	DLL Check	Check the ComiEcatSdk,dll, It does not match the version of OS
09:19:11,833	Main	100	Device Scan	Device is nothing

- x64 OS x86 DLL
- x86 OS x64 DLL
- ComiIDE x86 OS x86 , X64 OS x64 , DLL OS

Solution

- DLL
- x64 OS x86 DLL x86 ComiIDE ²⁾

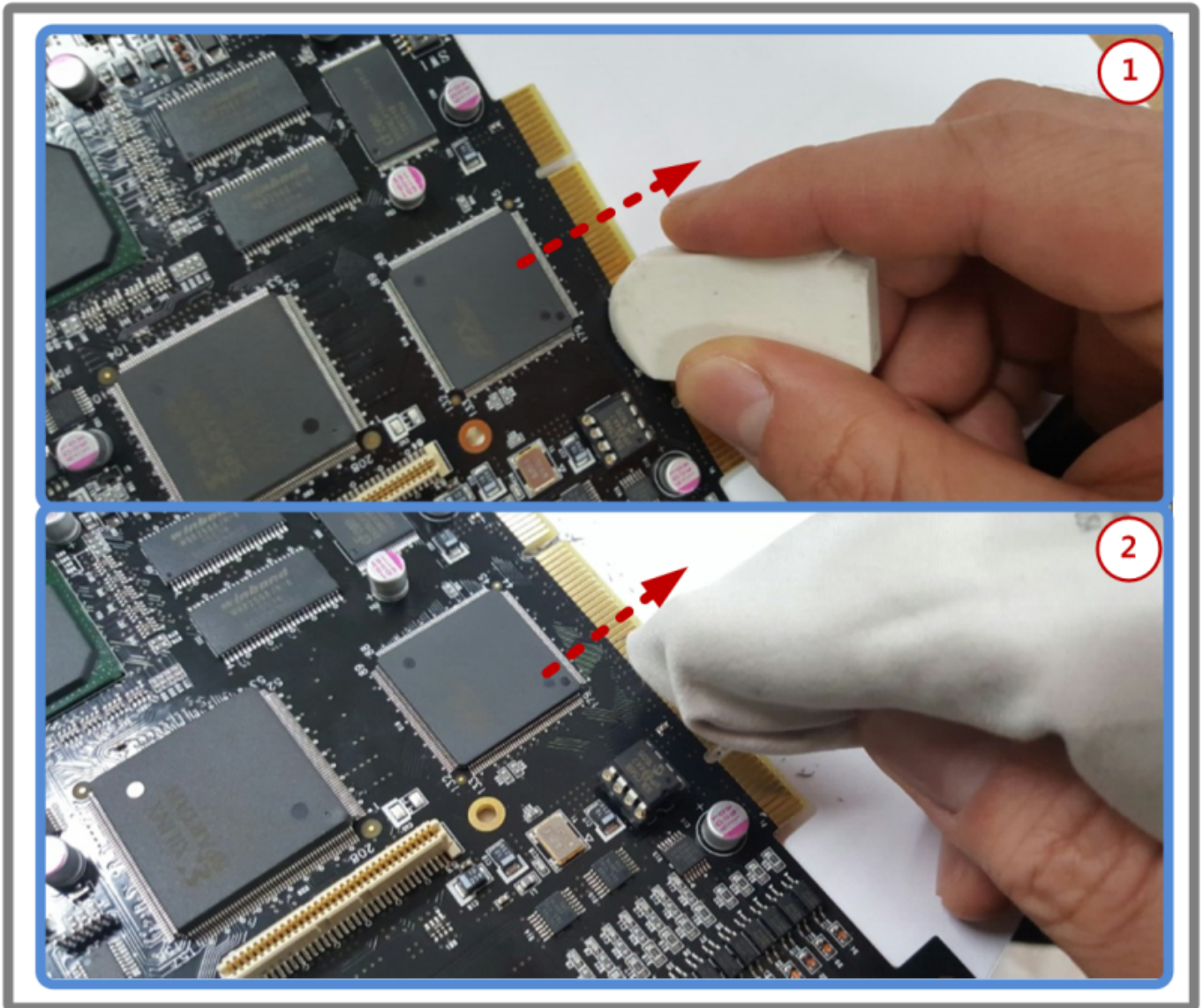
Case 5

Cause

- Driver가
- PCI Slot , 가 .

Solution

- PCI Slot
- PCI Slot



- PCI
- PCI
- PCI

1) 64bit OS 32bit Application C:\Windows\SysWow64

2) DLL C:\Windows\SysWow64

From: <https://www.comizoa.com/info/> - -
 Permanent link: https://www.comizoa.com/info/doku.php?id=application:comiide:troubleshooting:device_scan_failed&rev=1540432325
 Last update: 2024/07/08 18:23