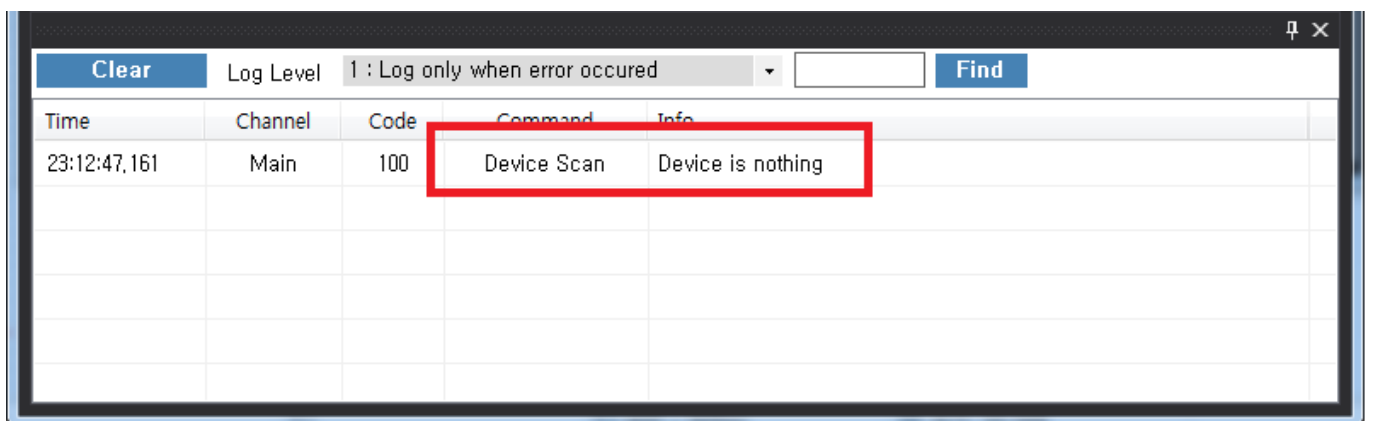
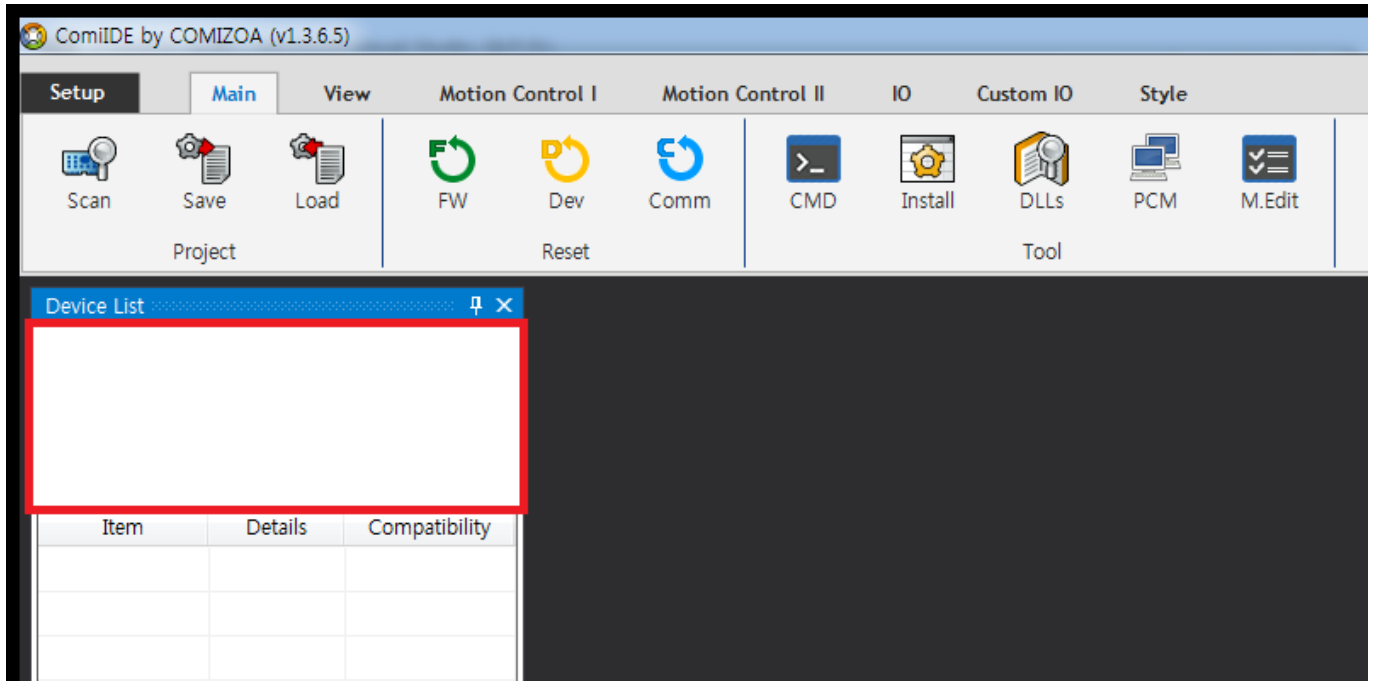


- Event** ..... 1
- Case 1** ..... 1
- Case 2** ..... 3
  - Cause ..... 3
  - Solution ..... 3
- Case 3** ..... 3
  - Cause ..... 3
  - Solution ..... 4
- Case 4** ..... 4
  - Cause ..... 4
  - Solution ..... 4
- Case 5** ..... 4
  - Cause ..... 4
  - Solution ..... 5

# Event

- Device가



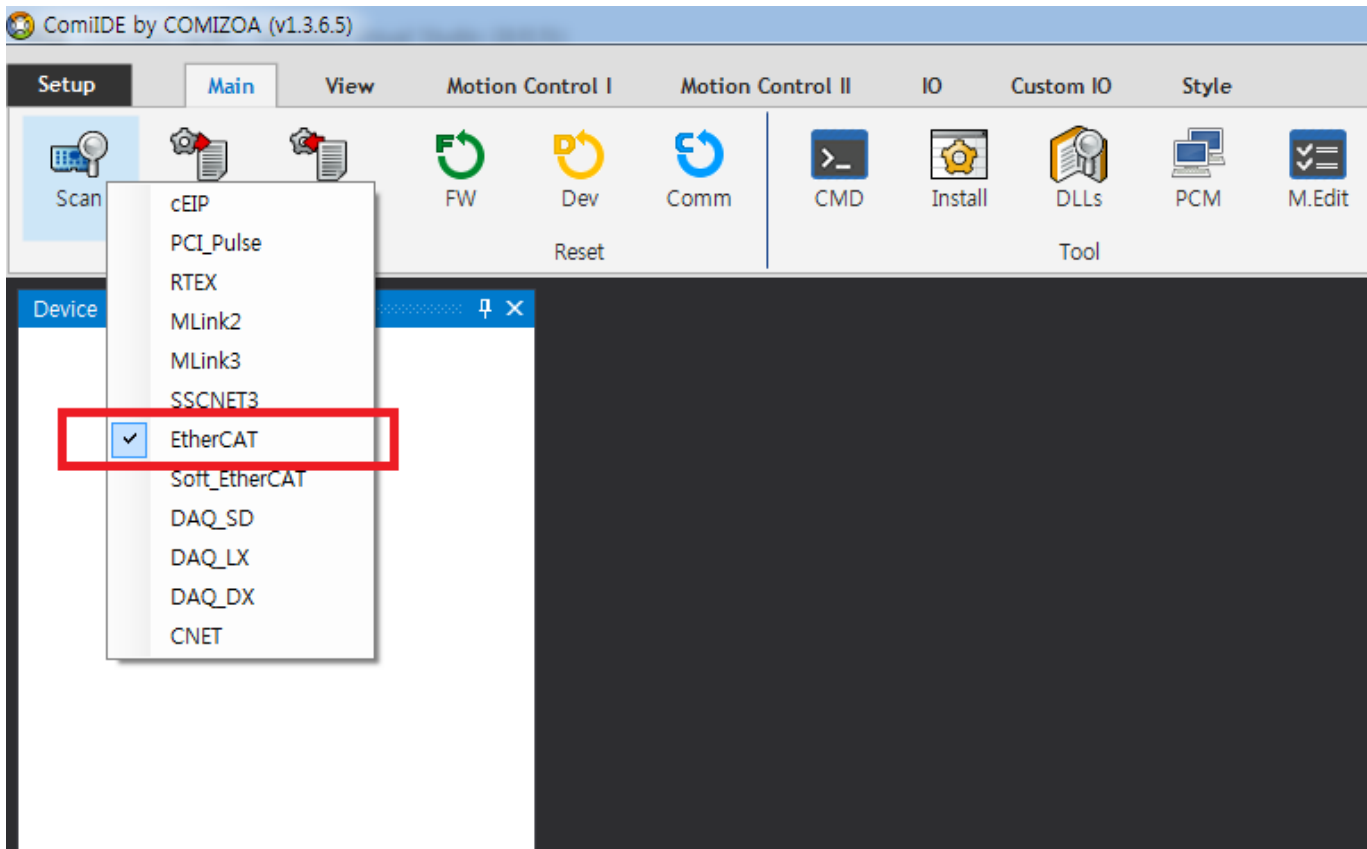
## Case 1

### Cause

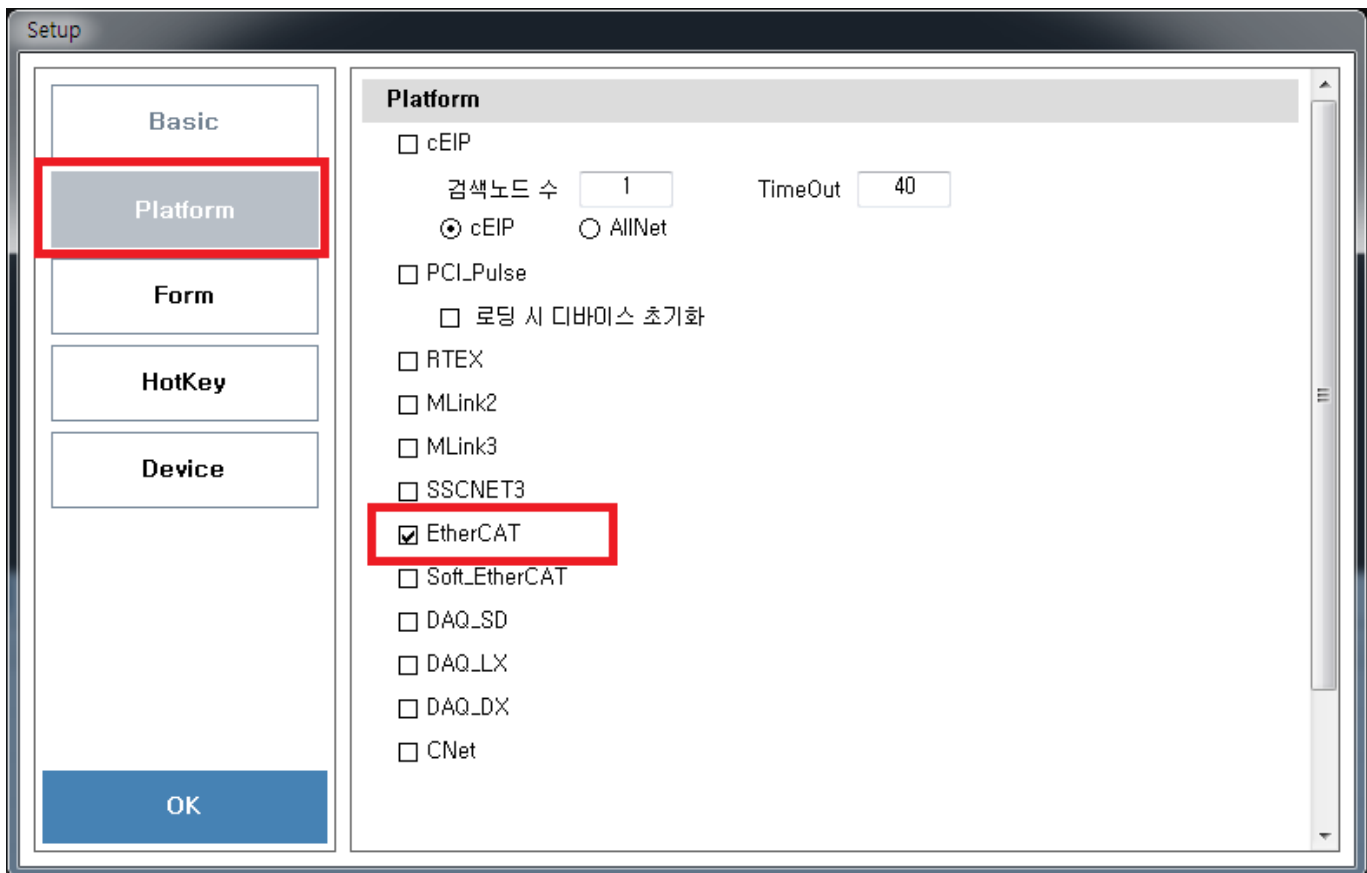
- ComiIDE Platform

### Solution

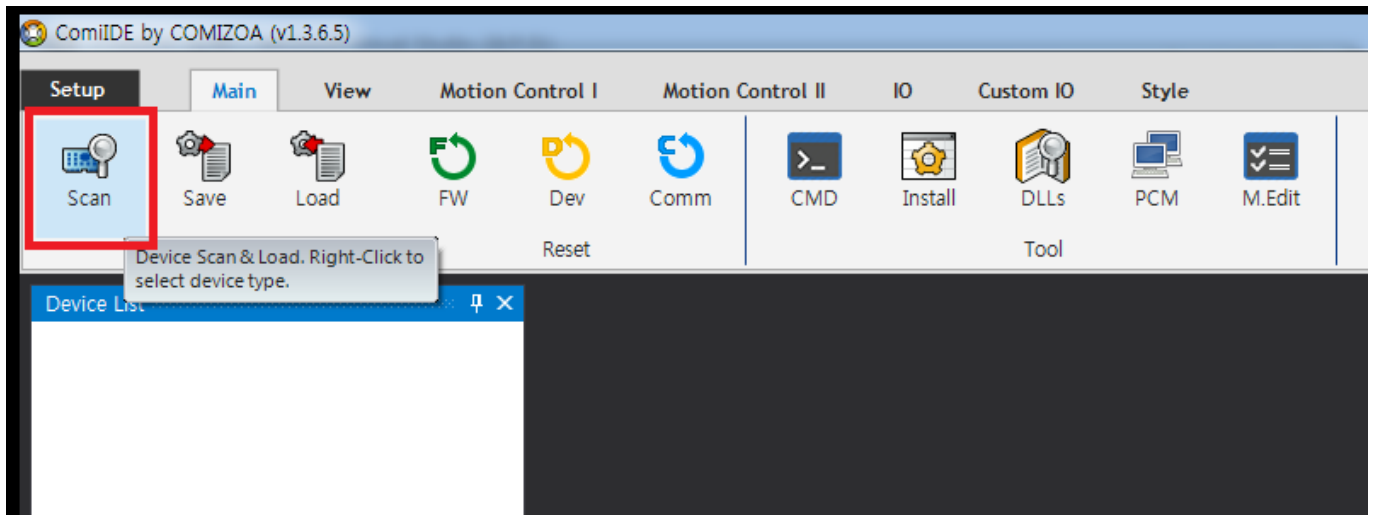
- ComiIDE Platform
  - 'Scan' Platform



- 'Setup'                      'Device' Tab              Platform



- 'Scan'                      SCAN



## Case 2

### Cause

- Driver 가

Time	Channel	Code	Command	Info
00:15:04,567	EtherCAT	100	Driver Check	Driver is not installed
00:15:05,747	Main	100	Device Scan	Device is nothing

### Solution

- Driver

## Case 3

### Cause

- DLL (Library)

Time	Channel	Code	Command	Info
00:50:38,542	EtherCAT	100	DLL Check	DLL not found : ComiEcatSdk,DLL
00:50:39,735	Main	100	Device Scan	Device is nothing

**Solution**

- C:\Windows\System32 <sup>1)</sup> DLL

**Case 4**

**Cause**

- (OS : x86 / x64) DLL

Time	Channel	Code	Command	Info
09:19:10,649	EtherCAT	100	DLL Check	Check the ComiEcatSdk,dll, It does not match the version of OS
09:19:11,833	Main	100	Device Scan	Device is nothing

- x64 OS x86 DLL
- x86 OS x64 DLL
- ComiIDE x86 OS x86 , X64 OS x64 , DLL OS

**Solution**

- DLL
- x64 OS x86 DLL x86 ComiIDE <sup>2)</sup>

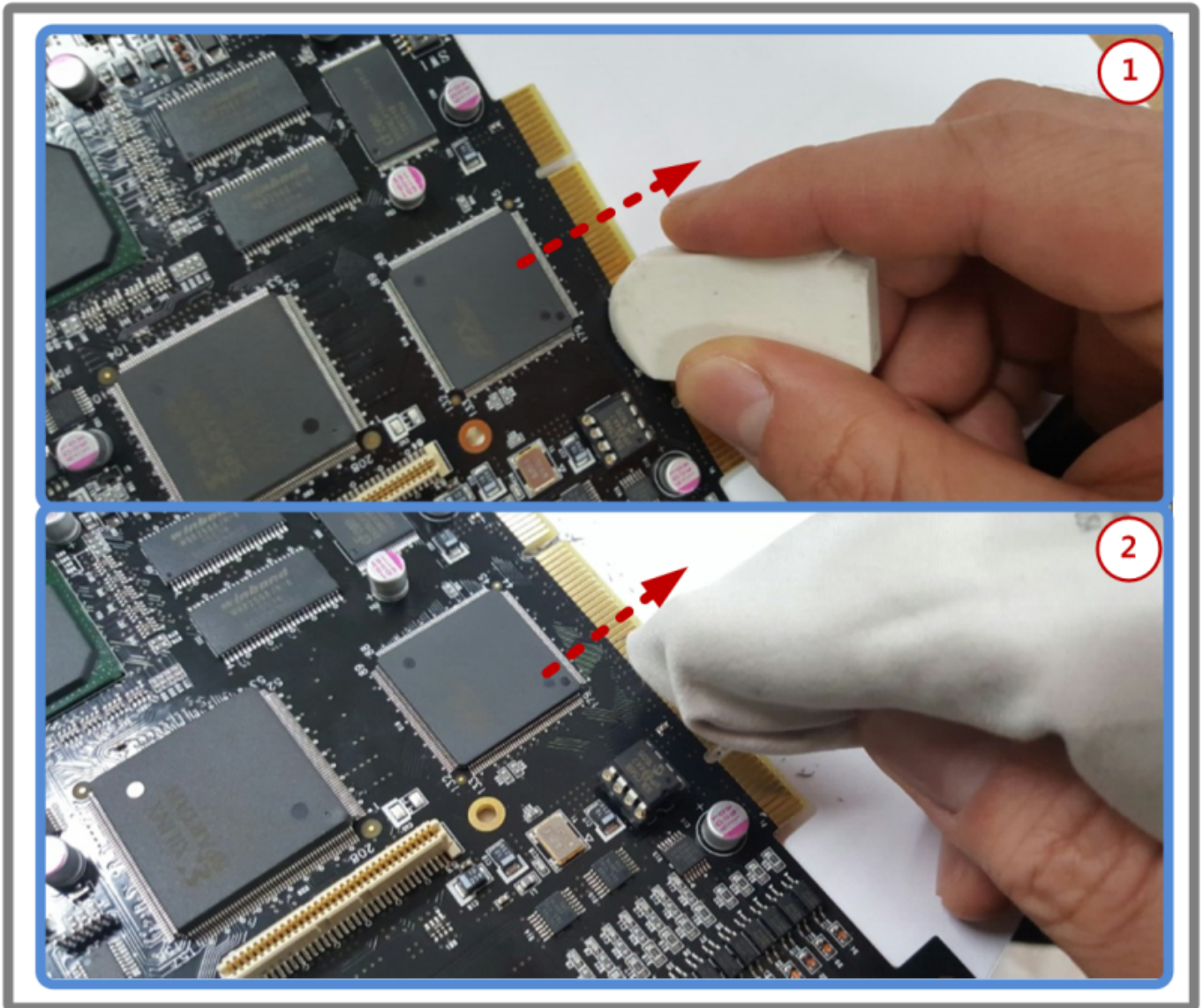
**Case 5**

**Cause**

- Driver가 , 가 .
- PCI Slot , 가 .

### Solution

- PCI Slot
- PCI Slot



- PCI
- PCI
- PCI

1) 64bit OS      32bit Application      C:\Windows\SysWow64

2)            DLL    C:\Windows\SysWow64

From: <https://www.comizoa.com/info/> - -  
Permanent link: [https://www.comizoa.com/info/doku.php?id=application:comiide:troubleshooting:device\\_scan\\_failed&rev=1540454672](https://www.comizoa.com/info/doku.php?id=application:comiide:troubleshooting:device_scan_failed&rev=1540454672)  
Last update: 2024/07/08 18:23