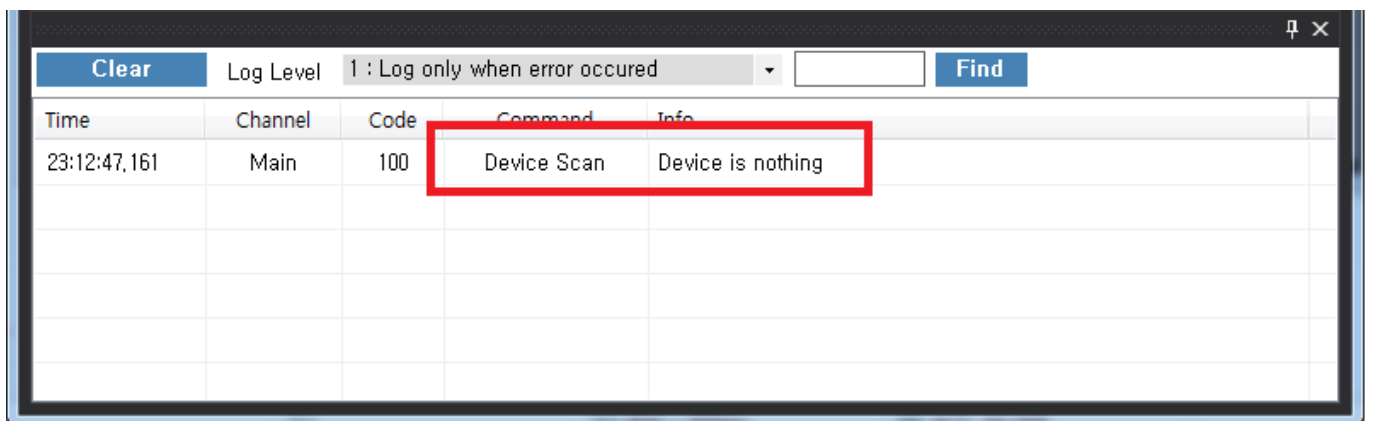
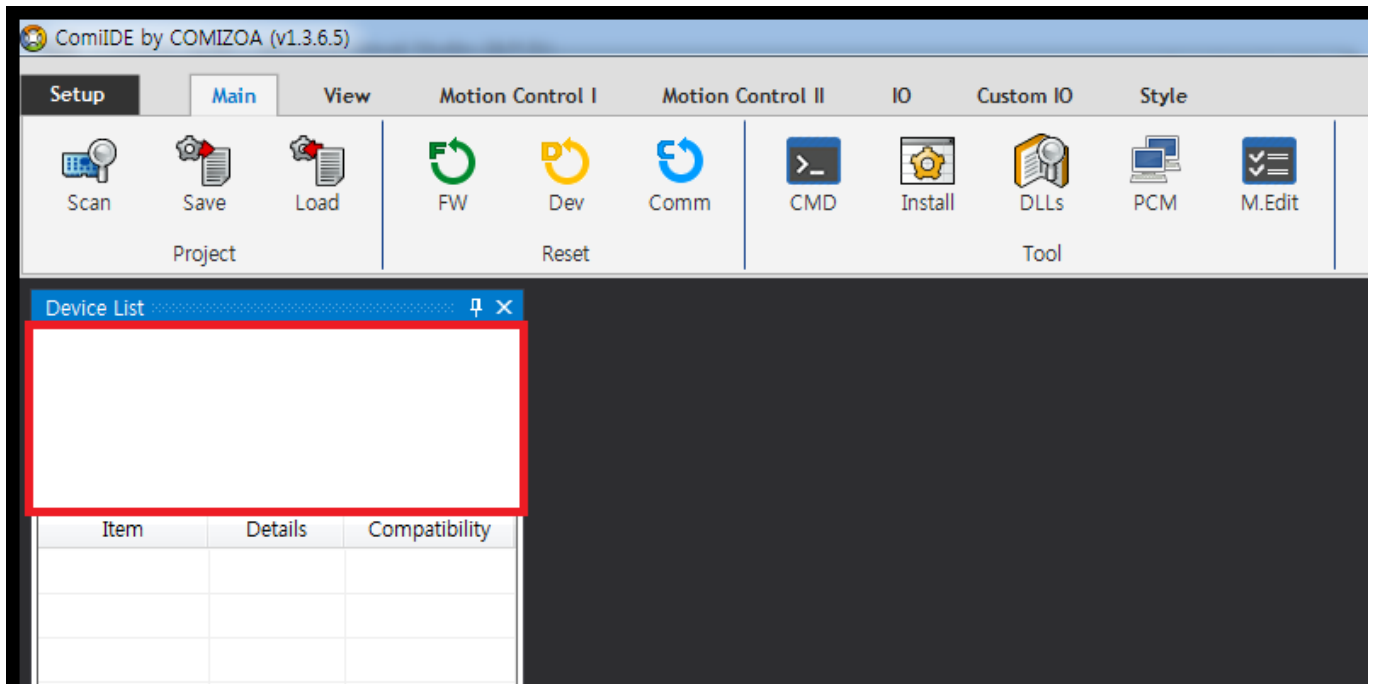


---

<b>Case 1</b> .....	1
Cause .....	1
Solution .....	1
<b>Case 2</b> .....	3
Cause .....	3
Solution .....	3
<b>Case 3</b> .....	3
Cause .....	3
Solution .....	4
<b>Case 4</b> .....	4
Cause .....	4
Solution .....	4
<b>Case 5</b> .....	5
Cause .....	5
Solution .....	5

× ComiIDE      Application      Device가



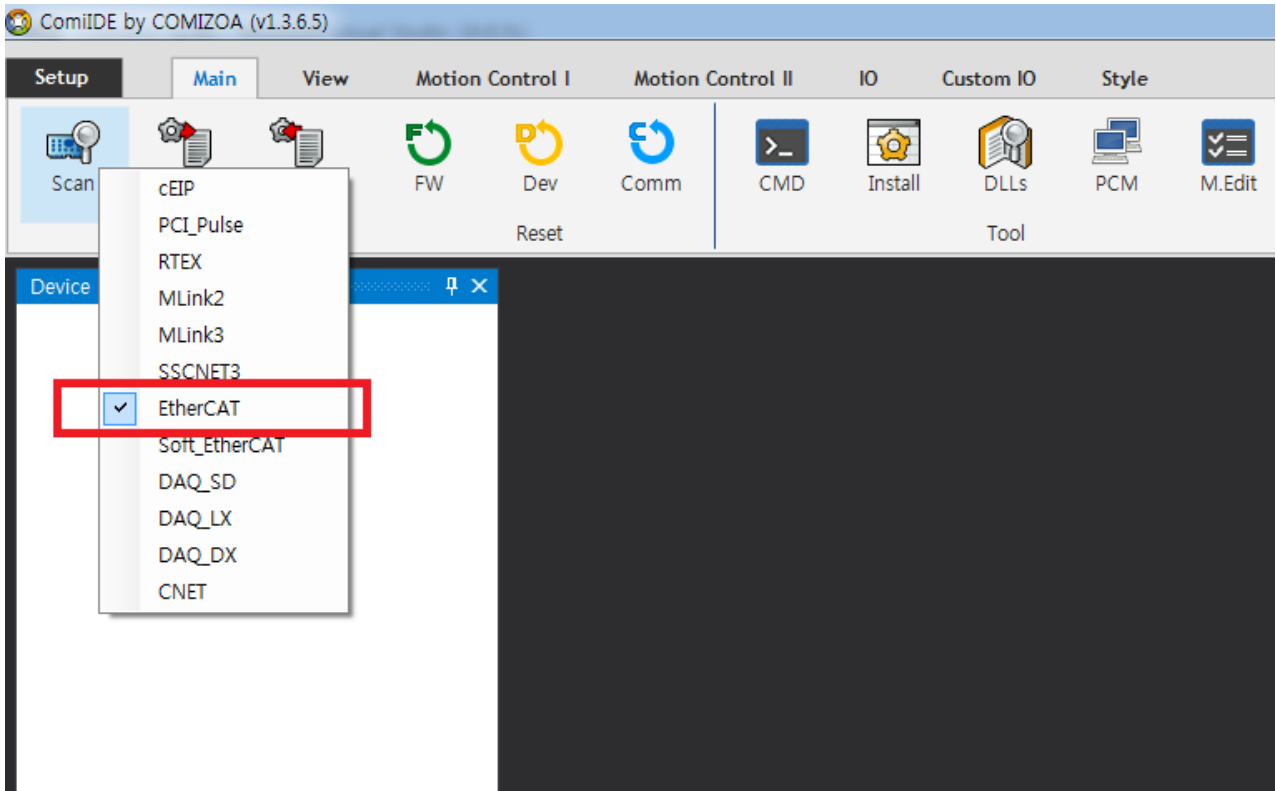
## Case 1

### Cause

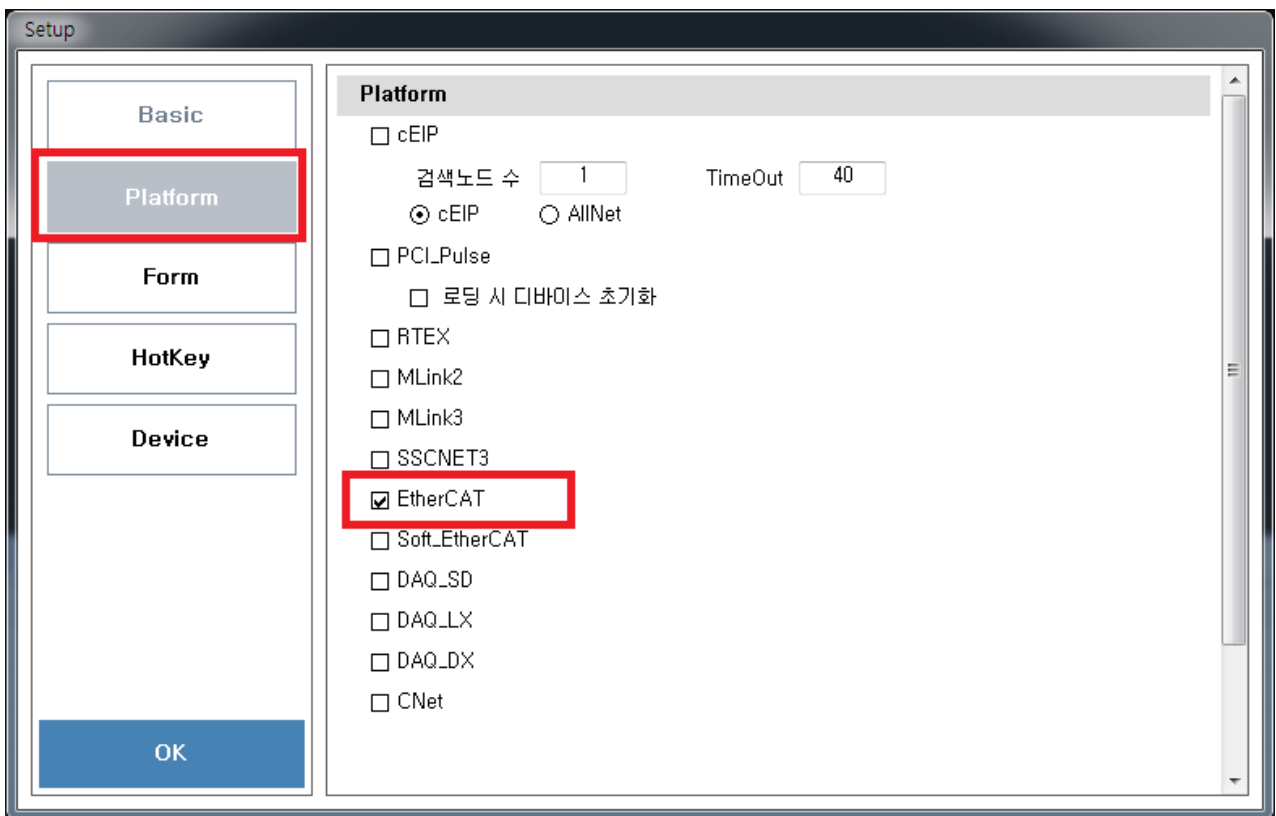
- ComiIDE      Platform

### Solution

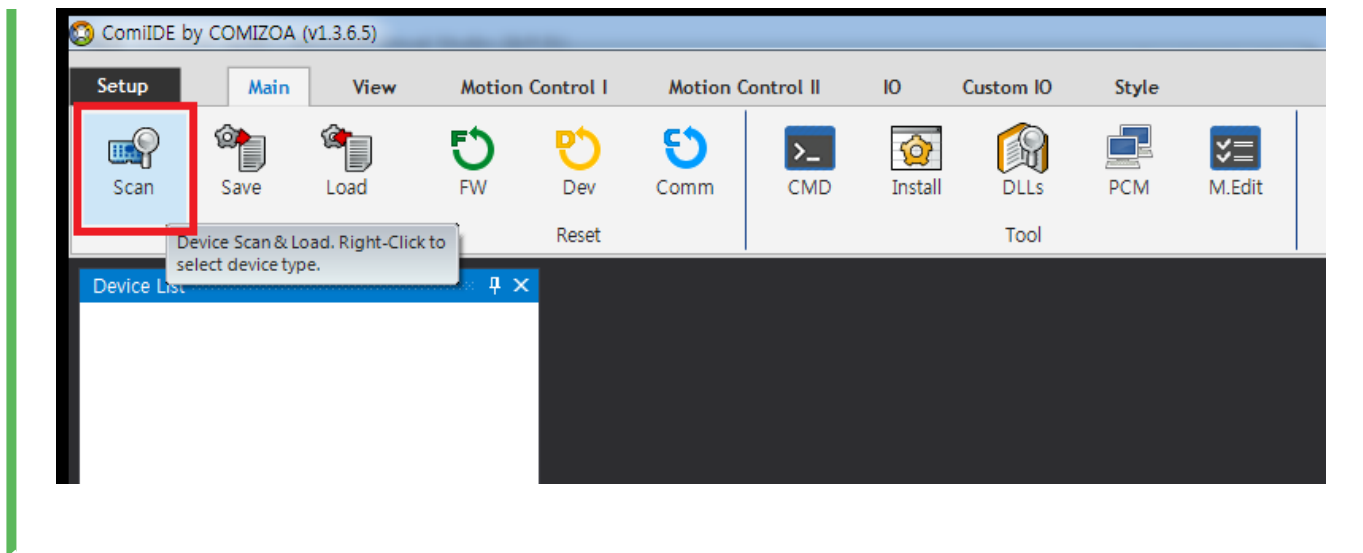
- ComiIDE      Platform
  - 'Scan'      Platform



- 'Setup'                      'Device' Tab              Platform



- 'Scan'                      SCAN



## Case 2

### Cause

- Driver 가

Time	Channel	Code	Command	Info
00:15:04,567	EtherCAT	100	Driver Check	Driver is not installed
00:15:05,747	Main	100	Device Scan	Device is nothing

### Solution

- Driver

## Case 3

### Cause

- DLL (Library)

Time	Channel	Code	Command	Info
00:50:38,542	EtherCAT	100	DLL Check	DLL not found : ComiEcatSdk,DLL
00:50:39,735	Main	100	Device Scan	Device is nothing

### Solution

- C:\Windows\System32 <sup>1)</sup> DLL

## Case 4

### Cause

- (OS : x86 / x64) DLL

Time	Channel	Code	Command	Info
09:19:10,649	EtherCAT	100	DLL Check	Check the ComiEcatSdk.dll. It does not match the version of OS
09:19:11,833	Main	100	Device Scan	Device is nothing

- x64 OS x86 DLL
- x86 OS x64 DLL
- ComiIDE x86 OS x86 , X64 OS x64 , DLL OS

### Solution

- x64 OS x86 DLL x86 ComiIDE <sup>2)</sup>

# Case 5

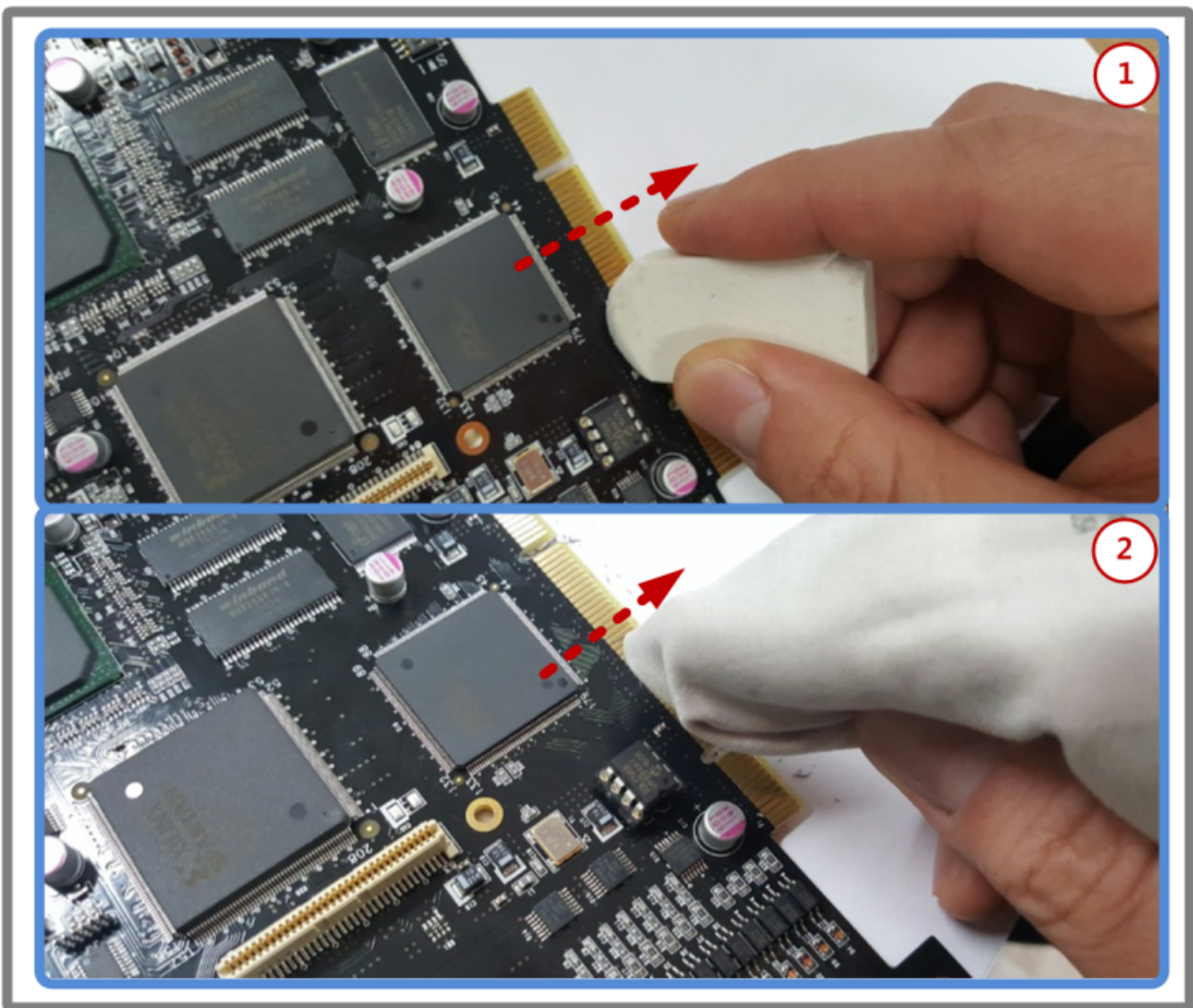
## Cause

- Driver가
- PCI Slot

, 가 .

## Solution

- PCI Slot
- PCI Slot



- PCI
- PCI
- PCI

## Category

1)

64bit OS      32bit Application      C:\Windows\SysWow64

2)

DLL    C:\Windows\SysWow64

From:

<https://www.comizoa.com/info/> - -

Permanent link:

[https://www.comizoa.com/info/doku.php?id=application:comiide:troubleshooting:device\\_scan\\_failed&rev=1540970503](https://www.comizoa.com/info/doku.php?id=application:comiide:troubleshooting:device_scan_failed&rev=1540970503)

Last update: **2024/07/08 18:23**