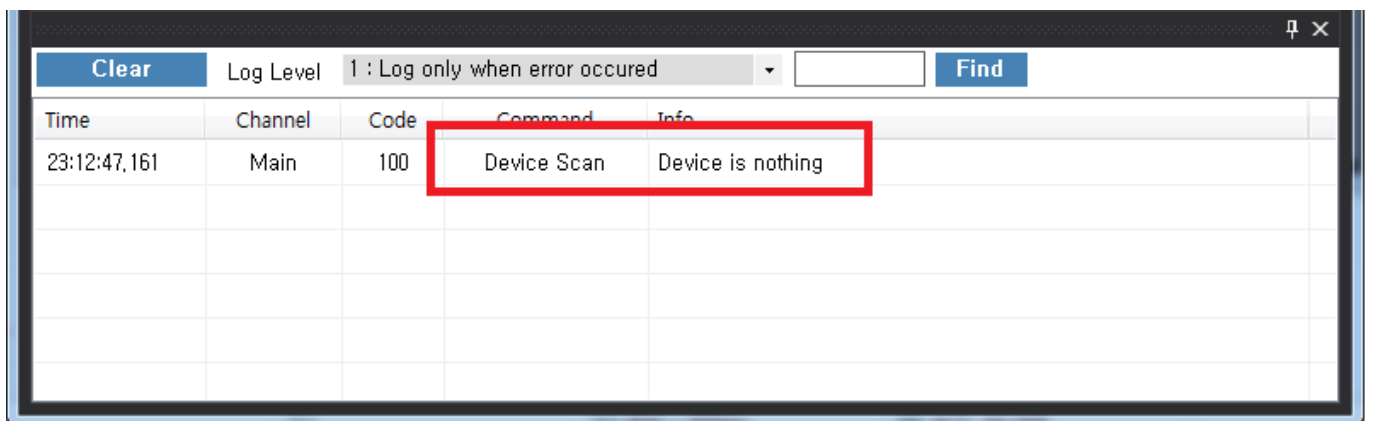
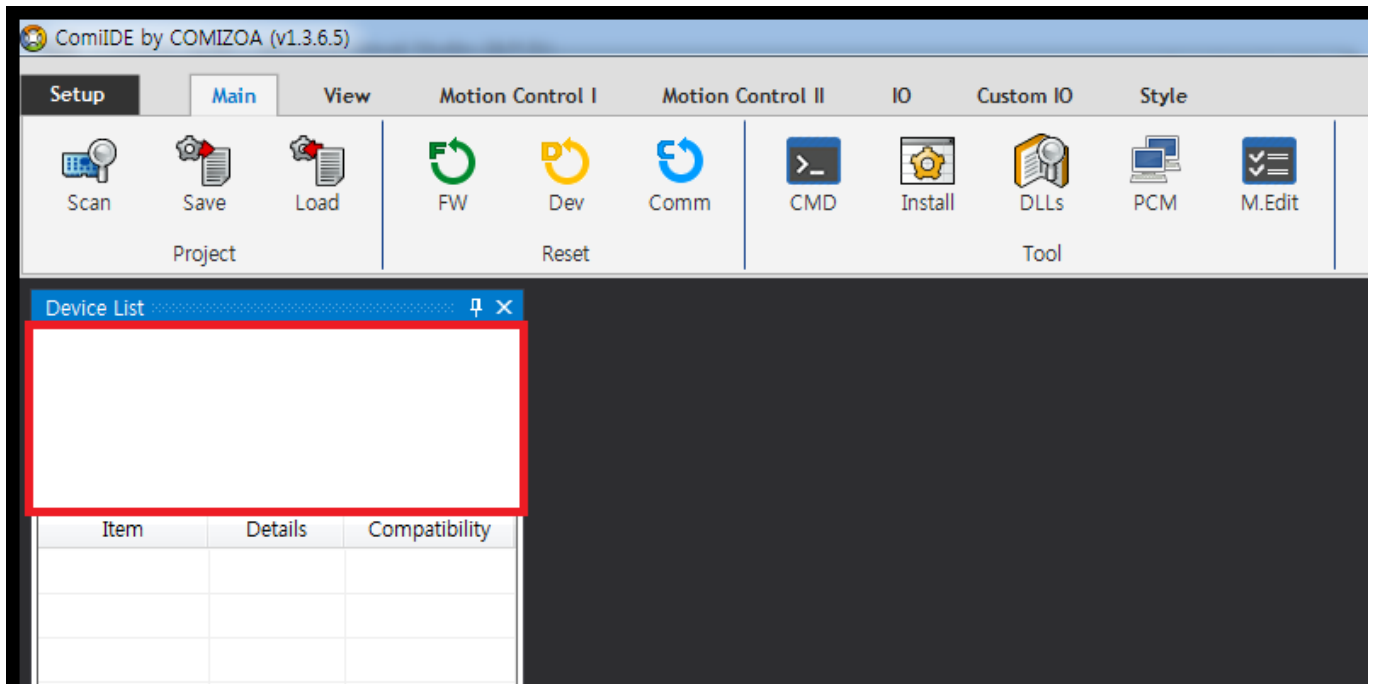

Case 1	1
Cause	1
Solution	1
Case 2	3
Cause	3
Solution	3
Case 3	3
Cause	3
Solution	4
Case 4	4
Cause	4
Solution	4
Case 5	5
Cause	5
Solution	5

× ComiIDE Application Device가



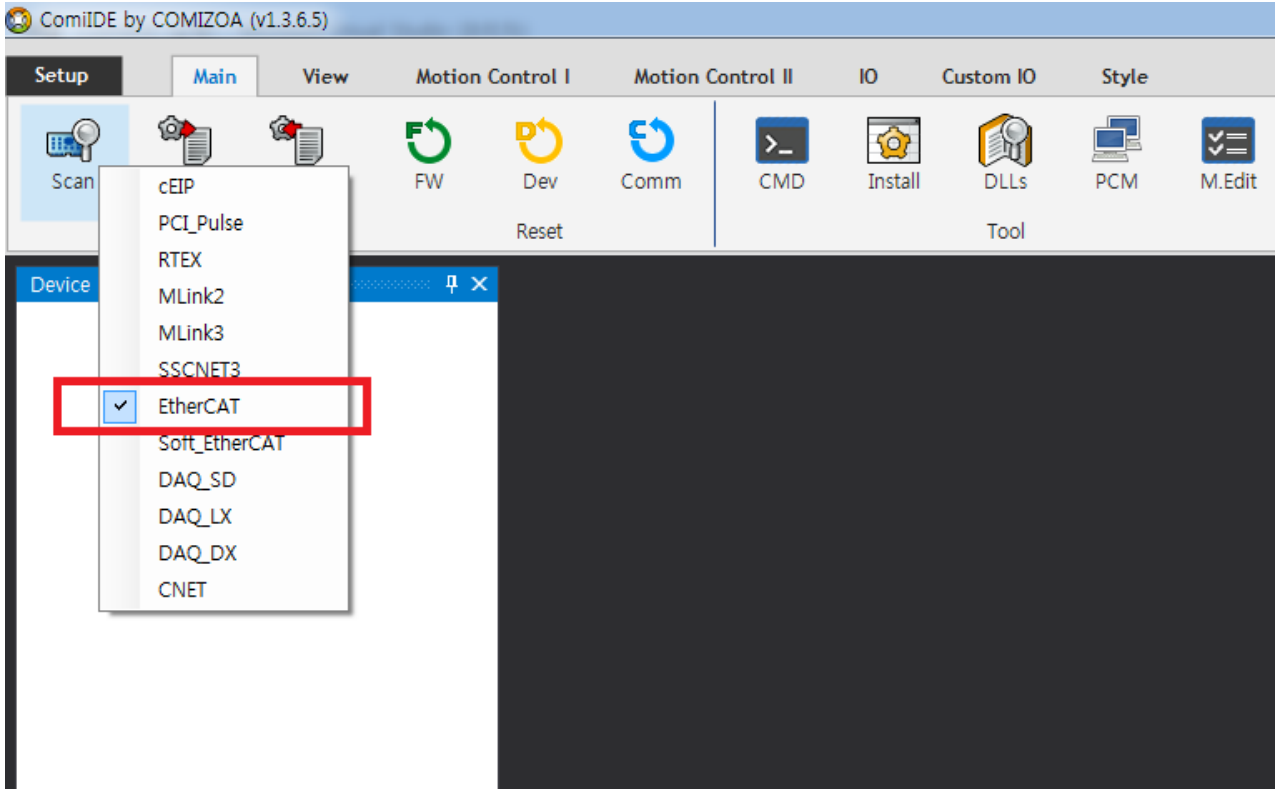
Case 1

Cause

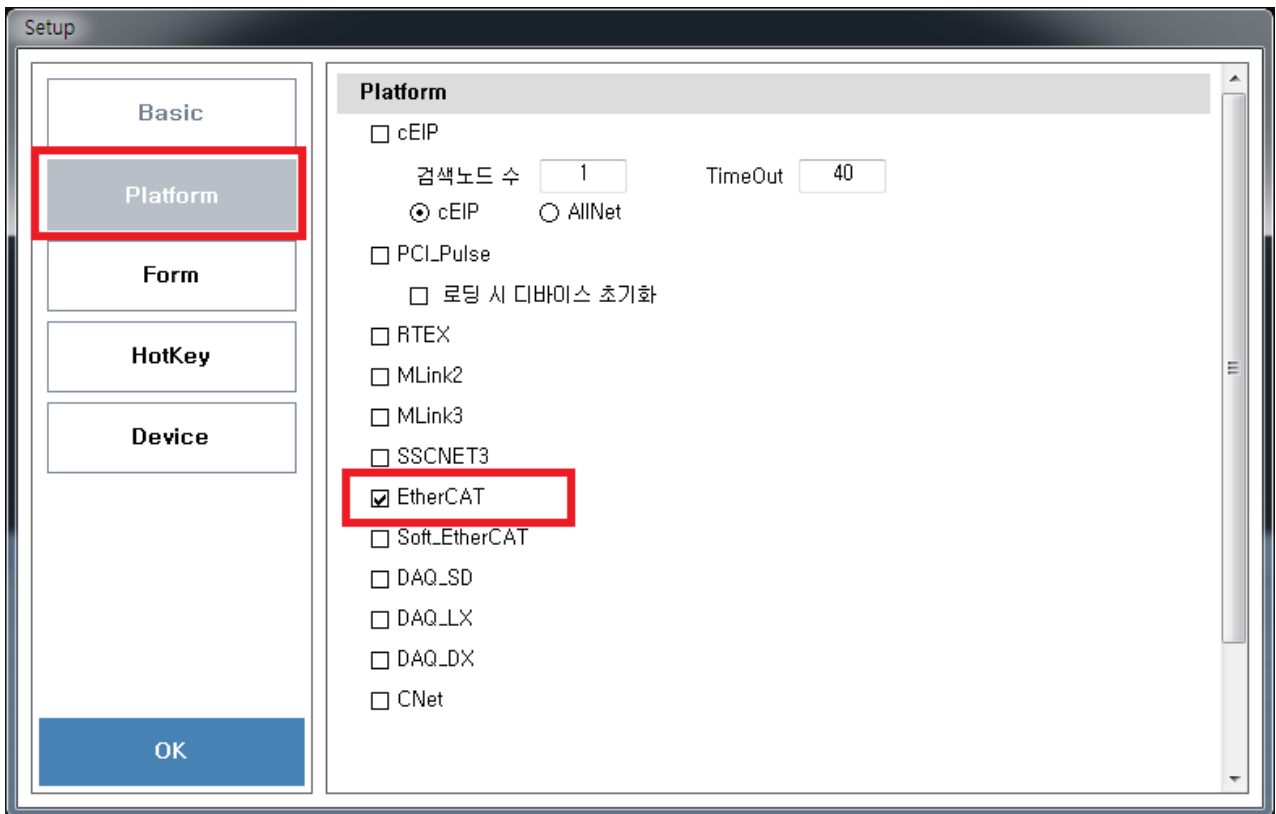
- ComiIDE Platform

Solution

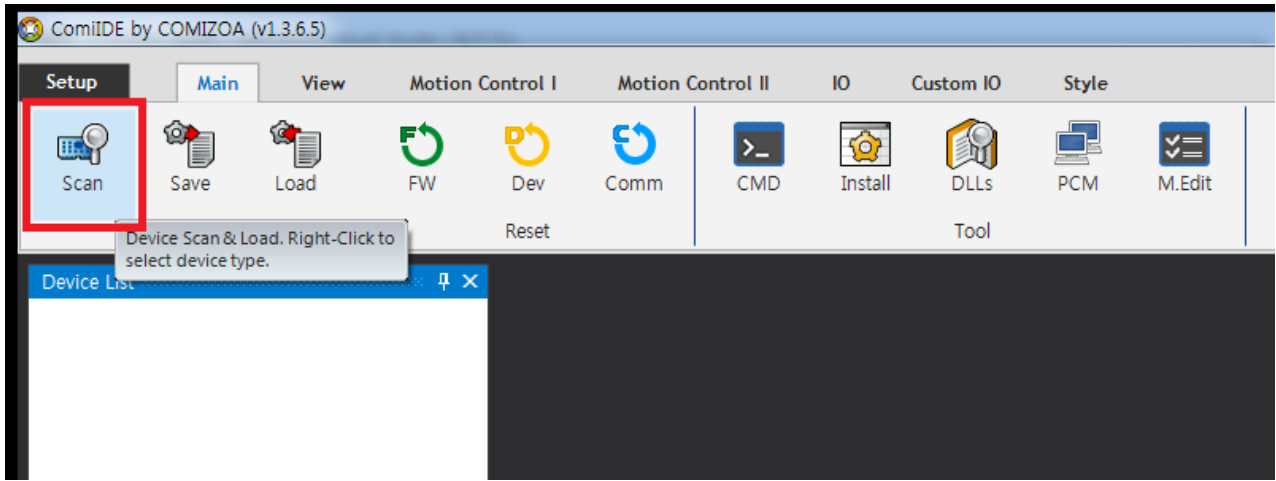
- ComiIDE Platform
 - 'Scan' Platform



- 'Setup' 'Device' Tab Platform



- 'Scan' SCAN



Case 2

Cause

- Driver 가

Time	Channel	Code	Command	Info
00:15:04,567	EtherCAT	100	Driver Check	Driver is not installed
00:15:05,747	Main	100	Device Scan	Device is nothing

Solution

- Driver

Case 3

Cause

- DLL (Library)

Time	Channel	Code	Command	Info
00:50:38,542	EtherCAT	100	DLL Check	DLL not found : ComiEcatSdk,DLL
00:50:39,735	Main	100	Device Scan	Device is nothing

Solution

- C:\Windows\System32 ¹⁾ DLL

Case 4

Cause

- (OS : x86 / x64) DLL

Time	Channel	Code	Command	Info
09:19:10,649	EtherCAT	100	DLL Check	Check the ComiEcatSdk.dll. It does not match the version of OS
09:19:11,833	Main	100	Device Scan	Device is nothing

- x64 OS x86 DLL
- x86 OS x64 DLL
- ComiIDE x86 OS x86 , X64 OS x64 , DLL OS

Solution

- x64 OS x86 DLL x86 ComiIDE ²⁾

Case 5

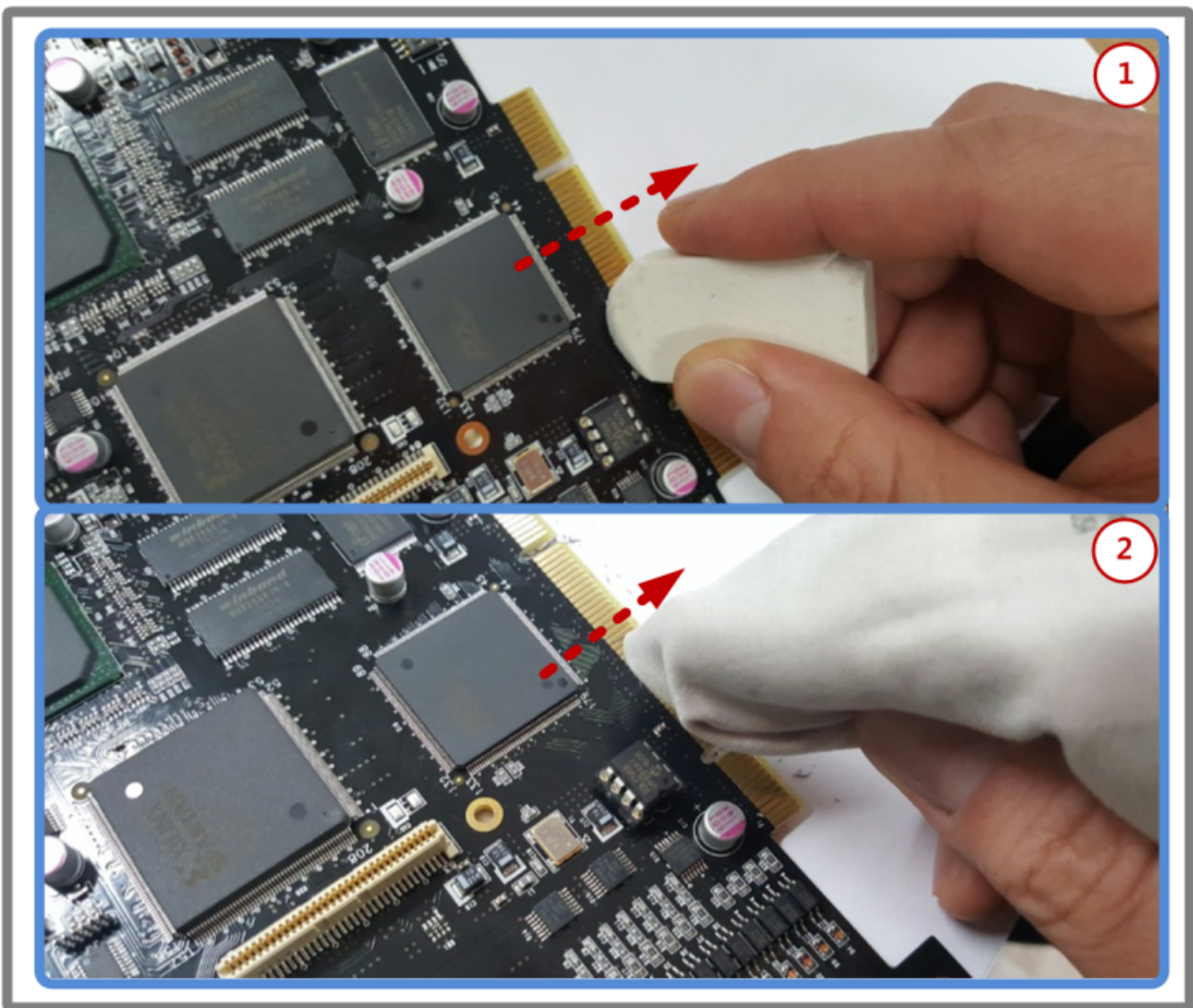
Cause

- Driver가
- PCI Slot

, 가 .

Solution

- PCI Slot
- PCI Slot



-
-
-

PCI

PCI

Category

1)

64bit OS 32bit Application C:\Windows\SysWow64

2)

DLL C:\Windows\SysWow64

From:

<https://www.comizoa.com/info/> - -

Permanent link:

https://www.comizoa.com/info/doku.php?id=application:comiide:troubleshooting:device_scan_failed&rev=1540970548

Last update: **2024/07/08 18:23**