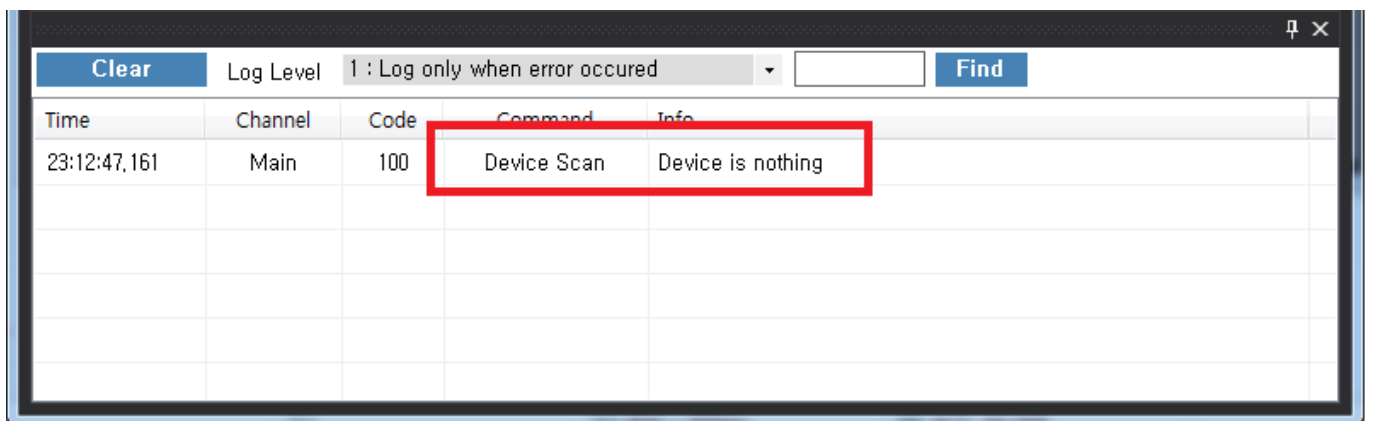
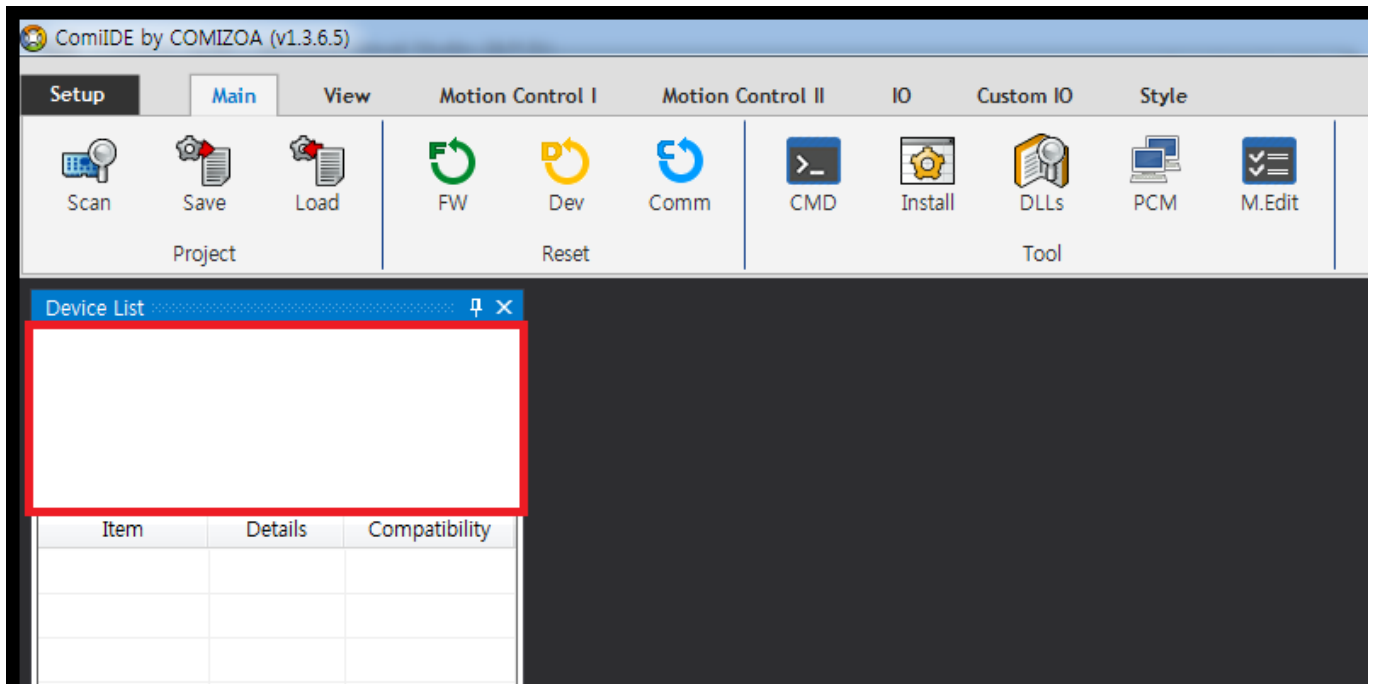


- Case 1** ..... 1
  - Cause ..... 1
  - Solution ..... 1
- Case 2** ..... 3
  - Cause ..... 3
  - Solution ..... 3
- Case 3** ..... 3
  - Cause ..... 3
  - Solution ..... 4
- Case 4** ..... 4
  - Cause ..... 4
  - Solution ..... 4
- Case 5** ..... 5
  - Cause ..... 5
  - Solution ..... 5

× ComiIDE      Application      Device가



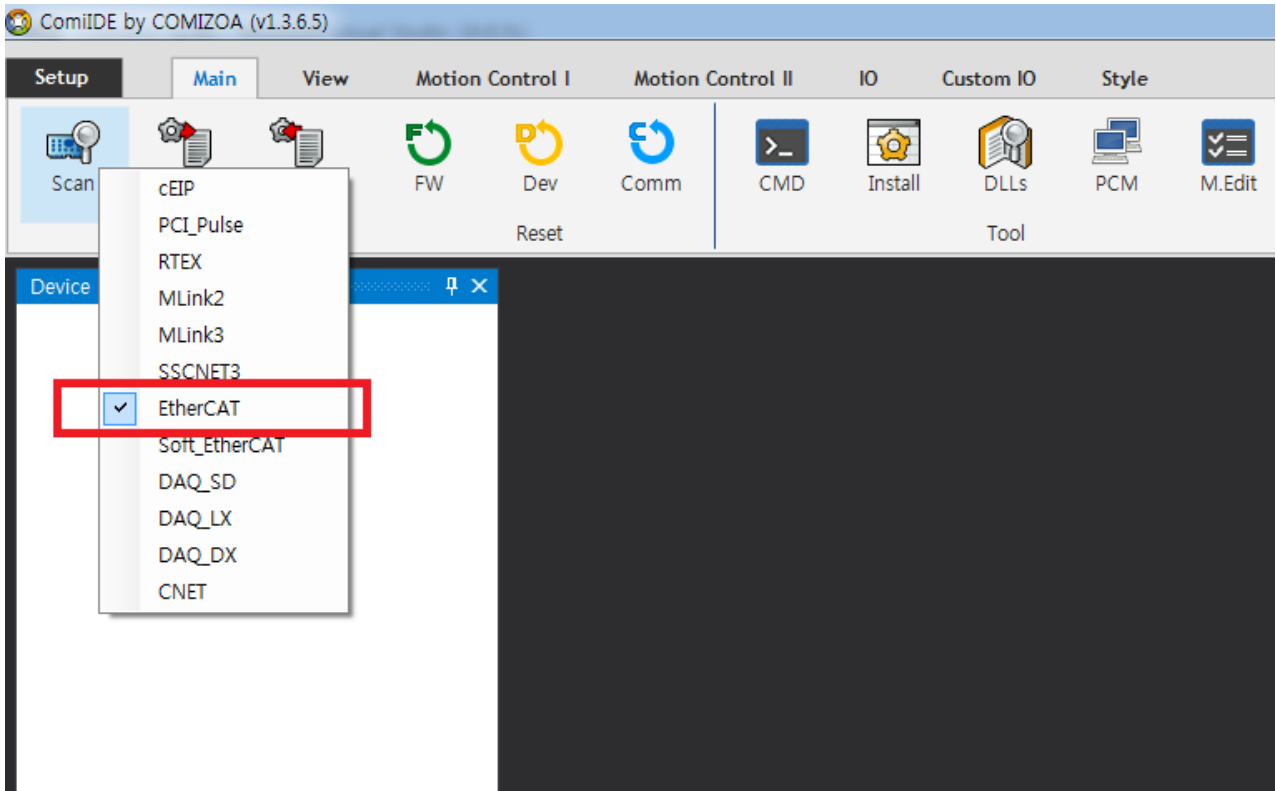
## Case 1

### Cause

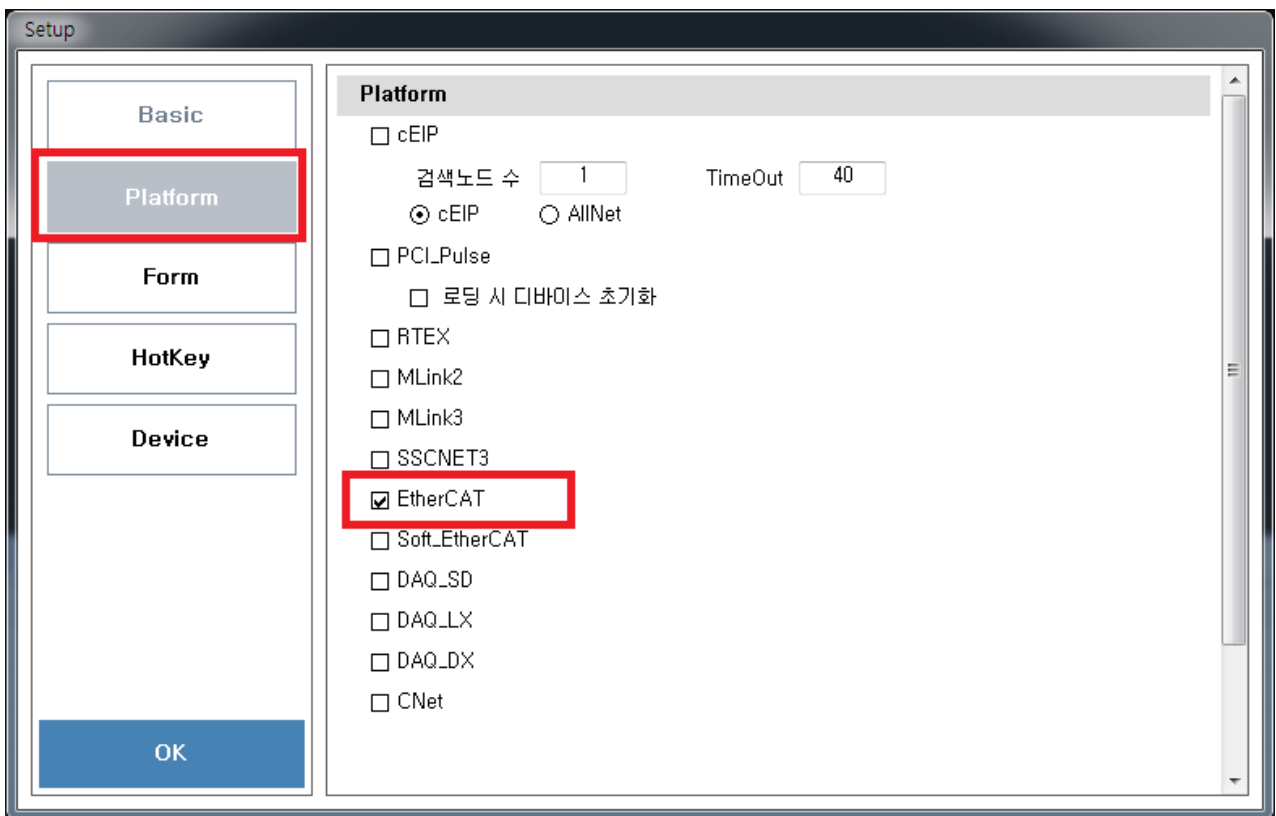
- ComiIDE      Platform

### Solution

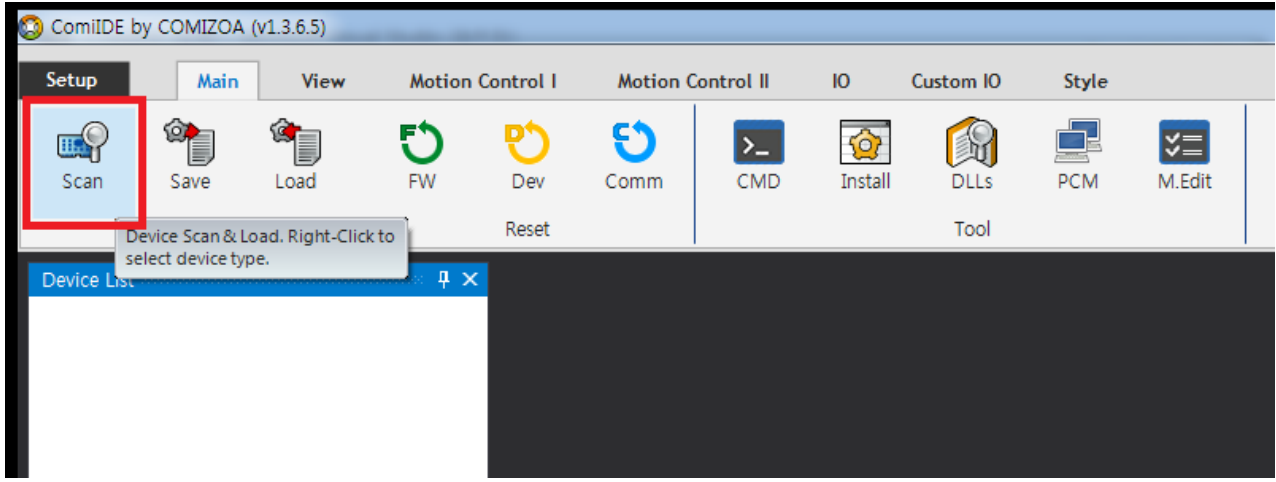
- ComiIDE      Platform
  - 'Scan'      Platform



- 'Setup'                      'Device' Tab              Platform



- 'Scan'                      SCAN



## Case 2

### Cause

- Driver 가

Time	Channel	Code	Command	Info
00:15:04,567	EtherCAT	100	Driver Check	Driver is not installed
00:15:05,747	Main	100	Device Scan	Device is nothing

### Solution

- Driver

## Case 3

### Cause

- DLL (Library)

Time	Channel	Code	Command	Info
00:50:38,542	EtherCAT	100	DLL Check	DLL not found : ComiEcatSdk,DLL
00:50:39,735	Main	100	Device Scan	Device is nothing

### Solution

- [DLL](#)

## Case 4

### Cause

- (OS : x86 / x64) DLL

Time	Channel	Code	Command	Info
09:19:10,649	EtherCAT	100	DLL Check	Check the ComiEcatSdk,dll. It does not match the version of OS
09:19:11,833	Main	100	Device Scan	Device is nothing

- x64 OS      x86 DLL
- x86 OS      x64 DLL
- ComiIDE              x86 OS      x86      , X64 OS      x64      , DLL      OS

### Solution

- DLL
- x64 OS      x86 DLL                      x86                      ComiIDE      1)

# Case 5

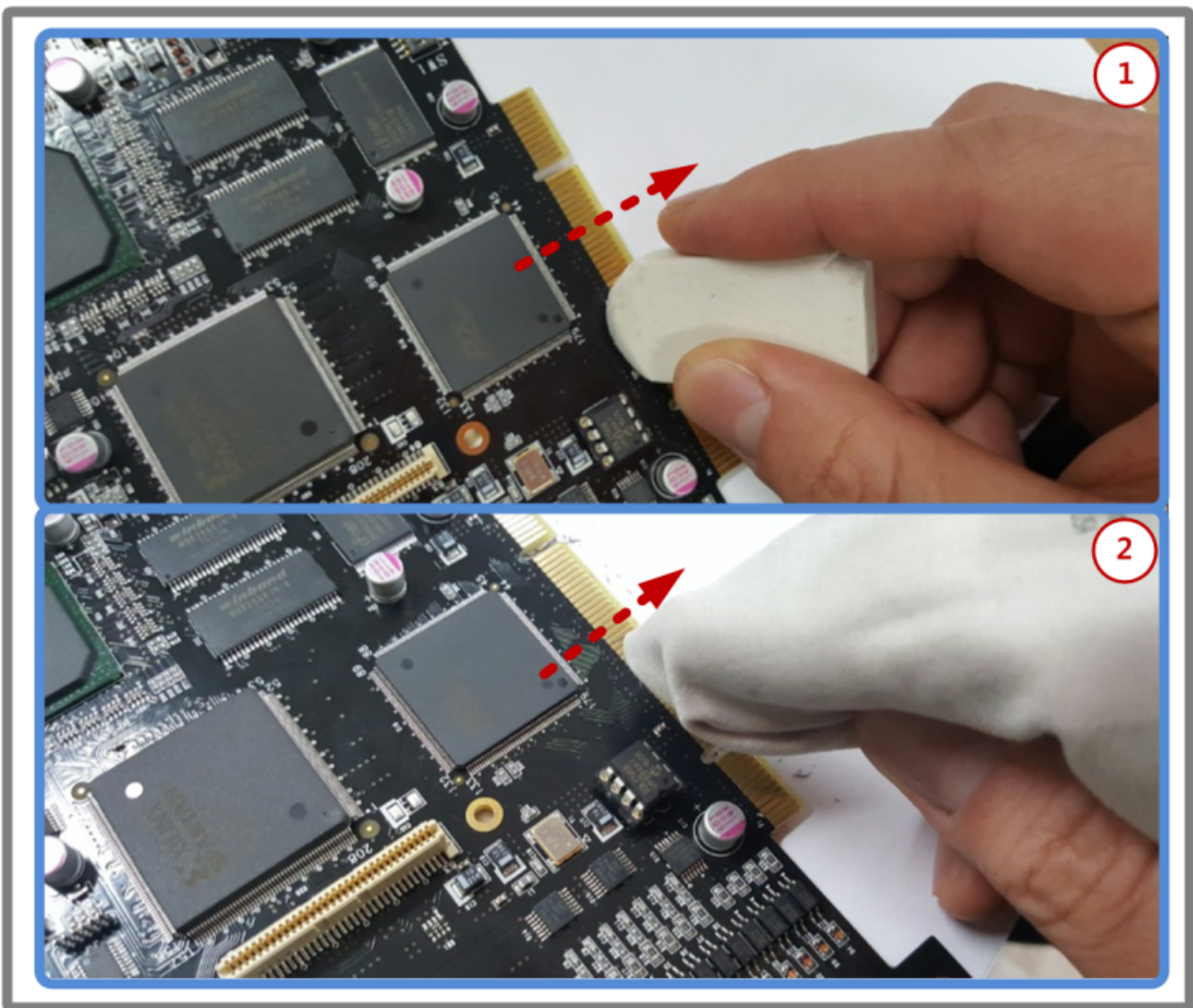
## Cause

- Driver가
- PCI Slot

, 가 .

## Solution

- PCI Slot
- PCI Slot



- 
- 
- 

PCI

PCI

1)

DLL C:\Windows\SysWow64

From:

<https://www.comizoa.com/info/> - -

Permanent link:

[https://www.comizoa.com/info/doku.php?id=application:comiide:troubleshooting:device\\_scan\\_failed&rev=1576118607](https://www.comizoa.com/info/doku.php?id=application:comiide:troubleshooting:device_scan_failed&rev=1576118607)

Last update: **2024/07/08 18:23**