

**cEIP** ..... 1

    가 ..... 1

..... 1

..... 2

Hardware ..... 2

Software ..... 2

..... 3

**ceNetConfig.ini** ..... 3

..... 3

..... 3

..... 4

    가       **(Win 10)** ..... 4

    가       **(Win 7)** ..... 4

    가 ..... 5

Windows ..... 5

..... 5

MADIC ..... 6

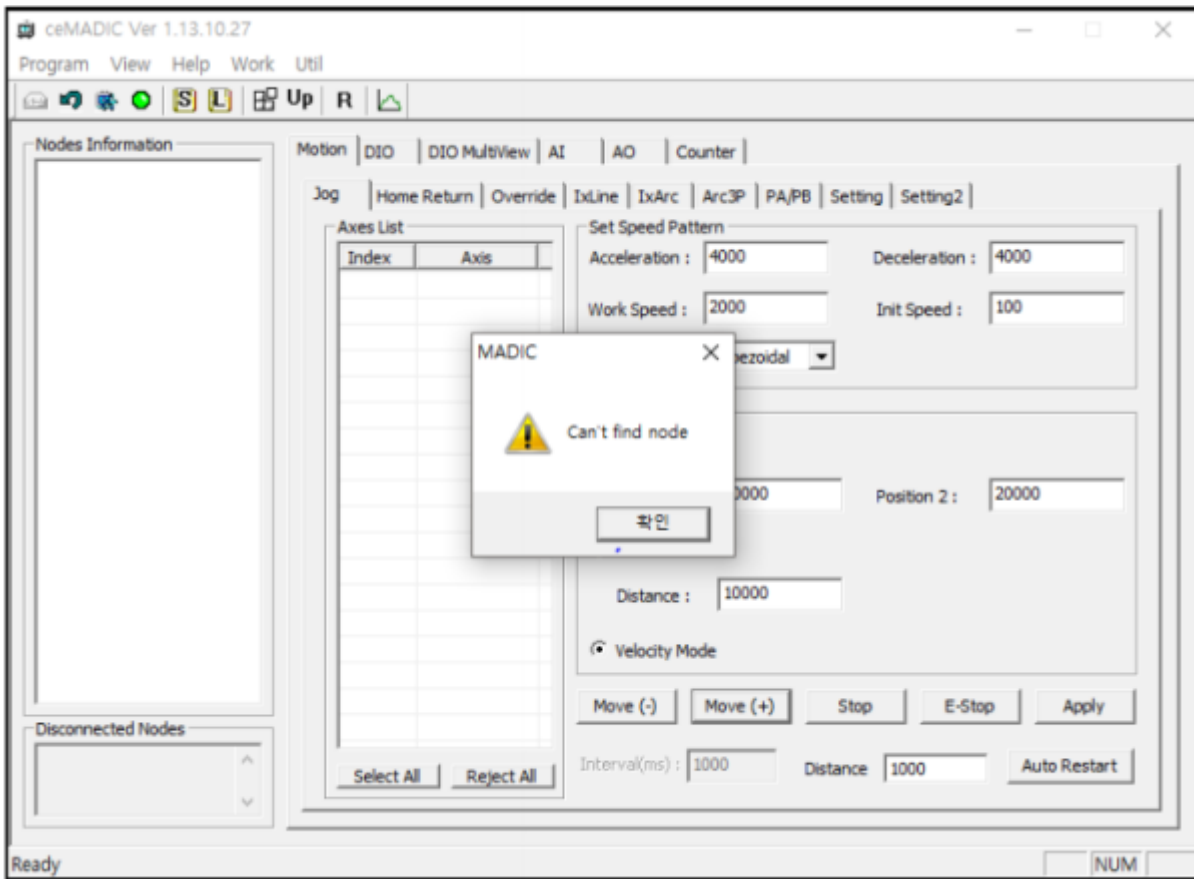
..... 6

# cEIP

× cEIP

## cEIP

가



- 1.
- 2. IP, SE

- 1. (Hardware )
- 2. .( )
- 3. ceNetConfig.ini .
- 4. 가 .
- 5. .
- 6. .

### Hardware

- Master IP Slave ID
- Master MSB,LSB
- Slave 가

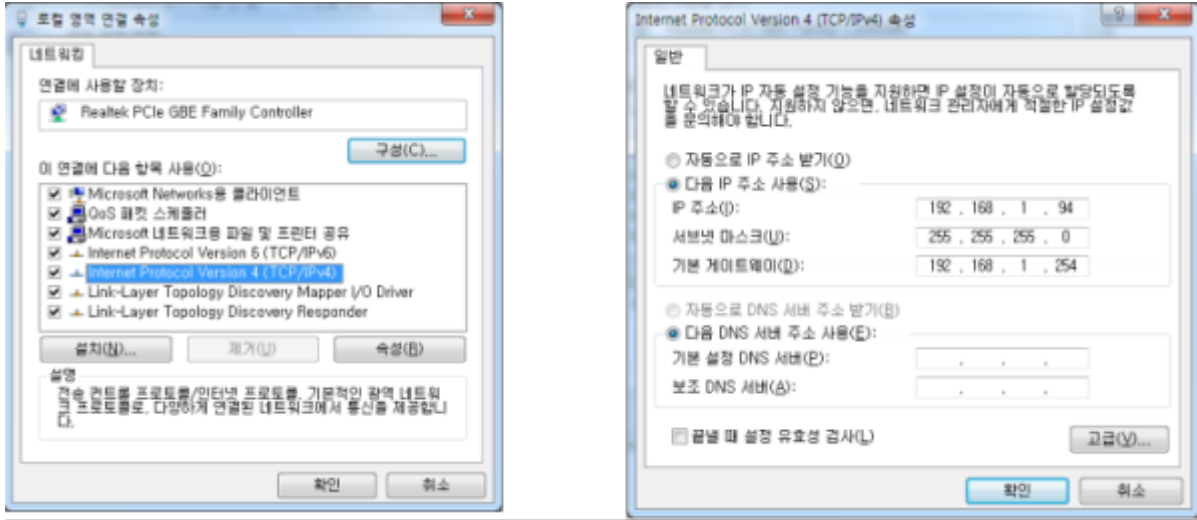


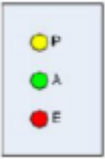
### Software

- IP Address

(IP : 192.168.1.00, : 255.255.255.0, : 192.168.1.254)

- IP 192.168.1.1~192.168.1.254 IP



	Name		Description
	P	Power led	모듈에 전원이 입력되면 점등됩니다.
	A	Active led	모듈이 정상동작 할 경우 점등됩니다.
	E	Error led	모듈에 에러가 발생시 점등됩니다.

- ceNM-IP(SE)

LED가 .

- 가 P A가 .

## ceNetConfig.ini

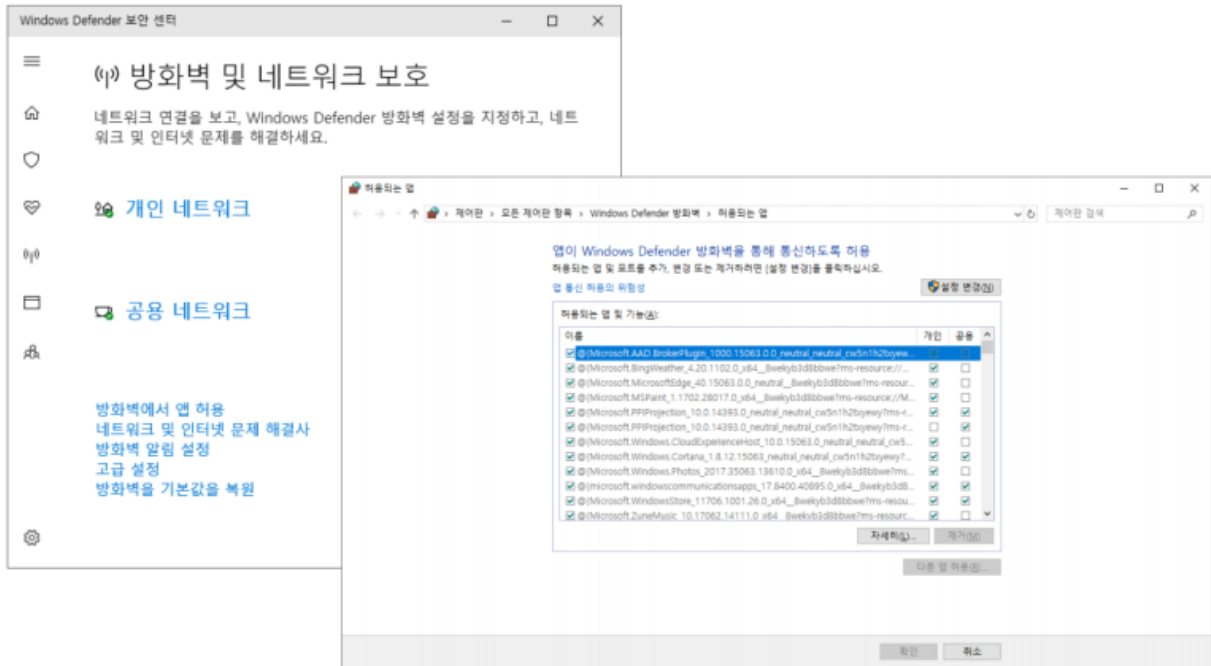
- 64bit : C:\Windows\SysWOW64\ceNetConfig.ini
- 32bit : C:\Windows\System32\ceNetConfig.ini

- - - 192.168.1. - [ ] - [ ] -

ceNetConfig.ini

- cEIP
- LAN 가 1 IP

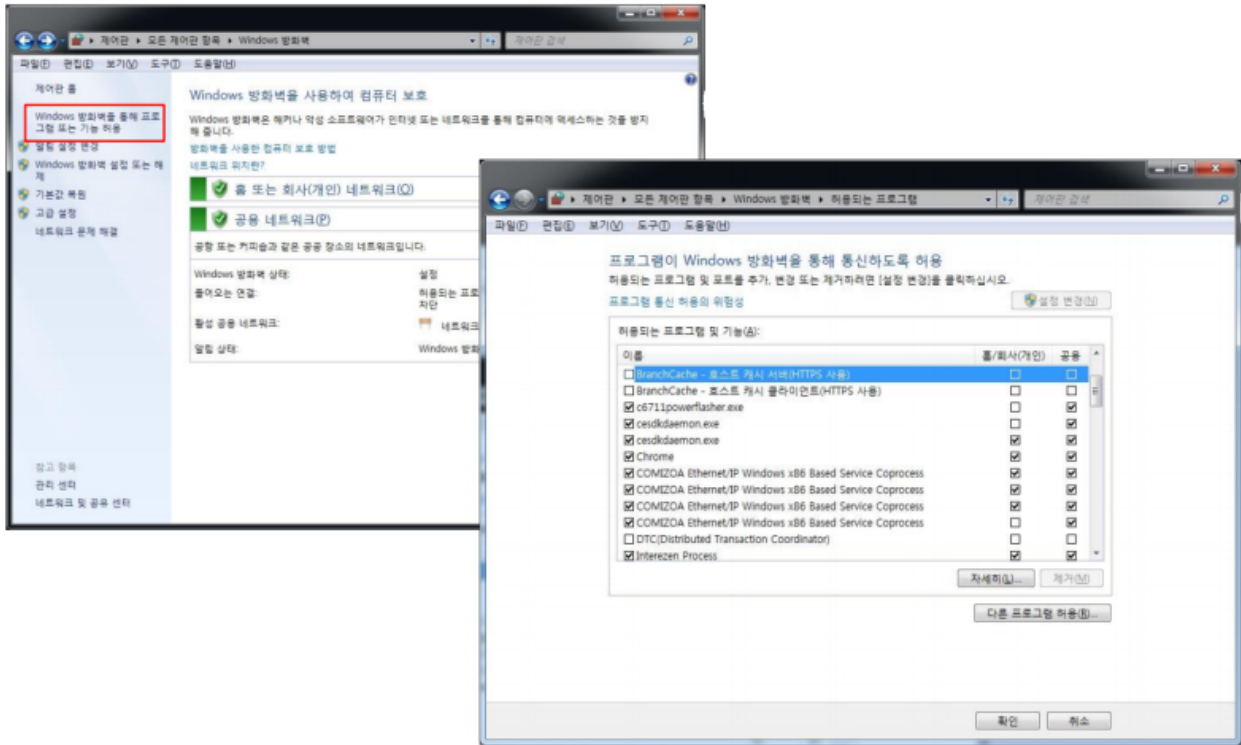
## 가 (Win 10)



- Windows 10

[Windows ] – [ ] – [ ]

## 가 (Win 7)



- Windows 7

[Windows ] – [ ] – [ ]

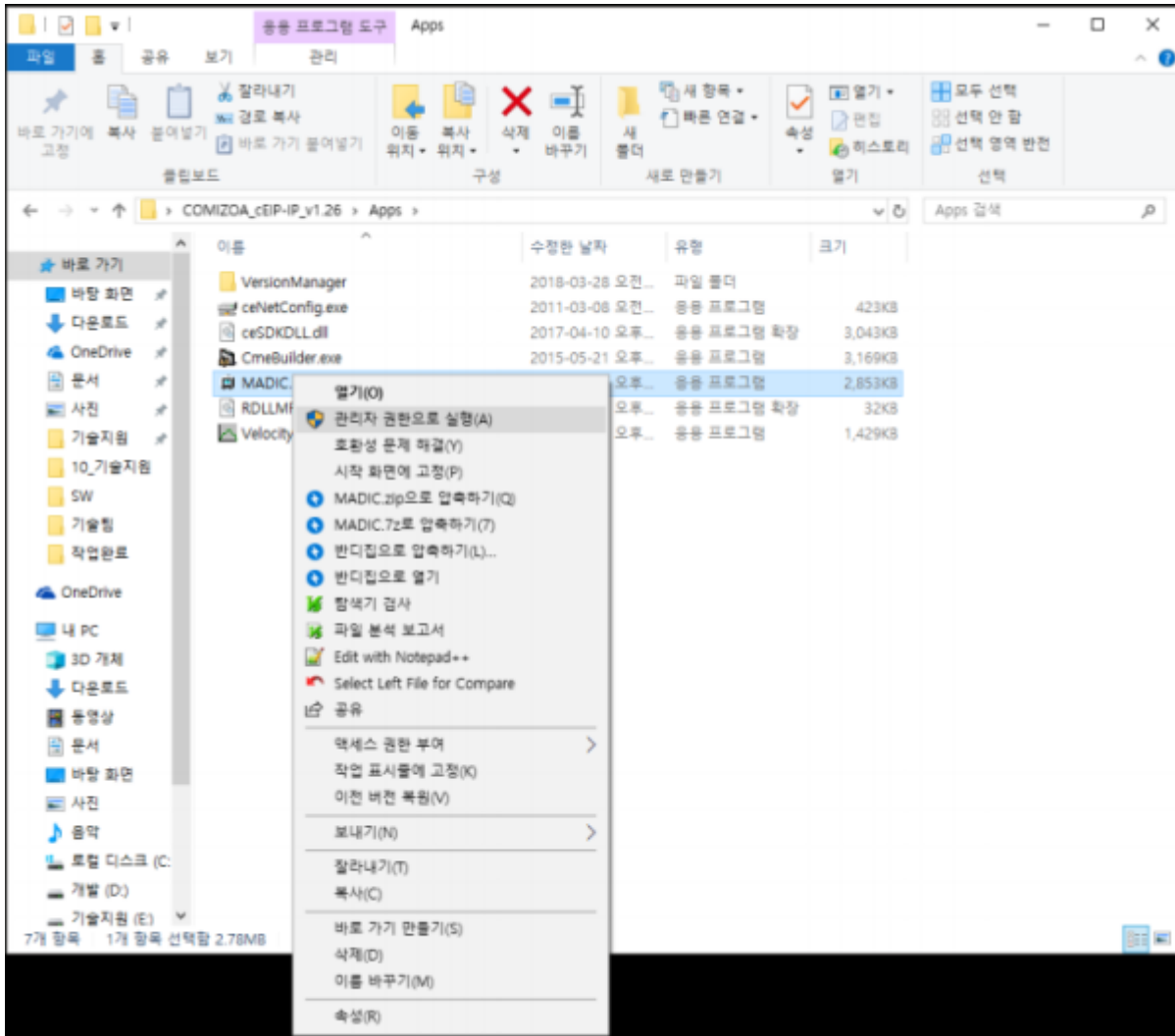
# 가

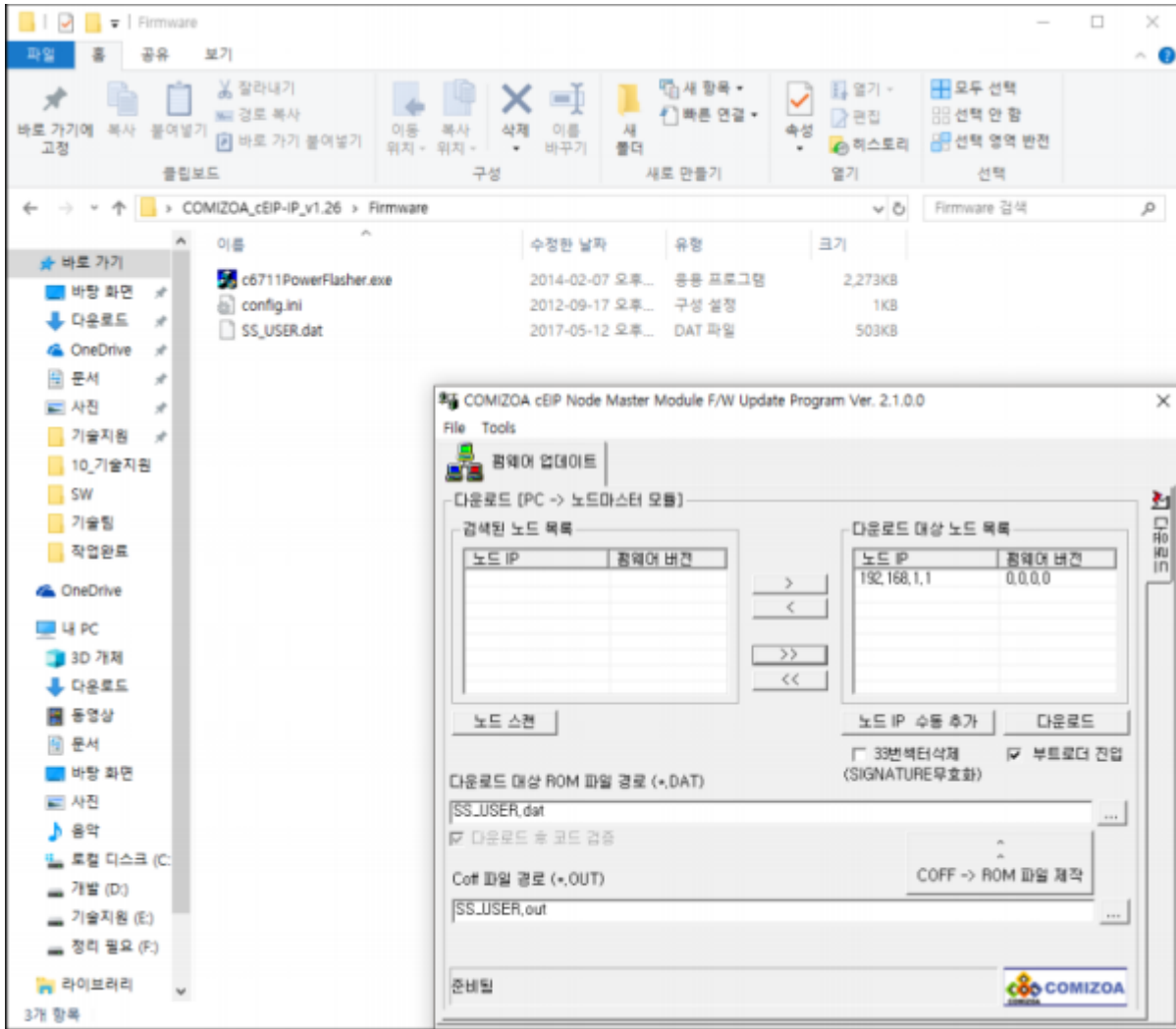
## Windows

- –
- –
- C6711powerflasher.exe
- Cesdkdaemon.exe
- COMIZOA Ethernet/IP Windows x86 BasedService

Coprocess

# MADIC





From:

<https://www.comizoa.com/info/> - -

Permanent link:

[https://www.comizoa.com/info/doku.php?id=faq:comiapp:fwupdater:02\\_ceip&rev=1625637233](https://www.comizoa.com/info/doku.php?id=faq:comiapp:fwupdater:02_ceip&rev=1625637233)

Last update: **2024/07/08 18:22**