

Step 1. cEIP 1

Step 2. cEIP IP 1

Step 3. Daemon 4

Step 4. 4

See Also 7

cEIP Setup

x cEIP

Step 1. cEIP

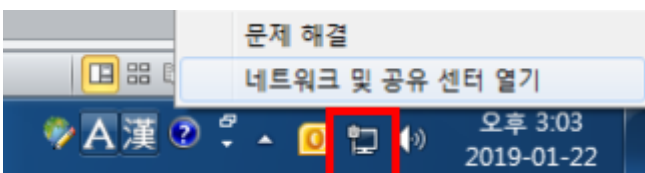


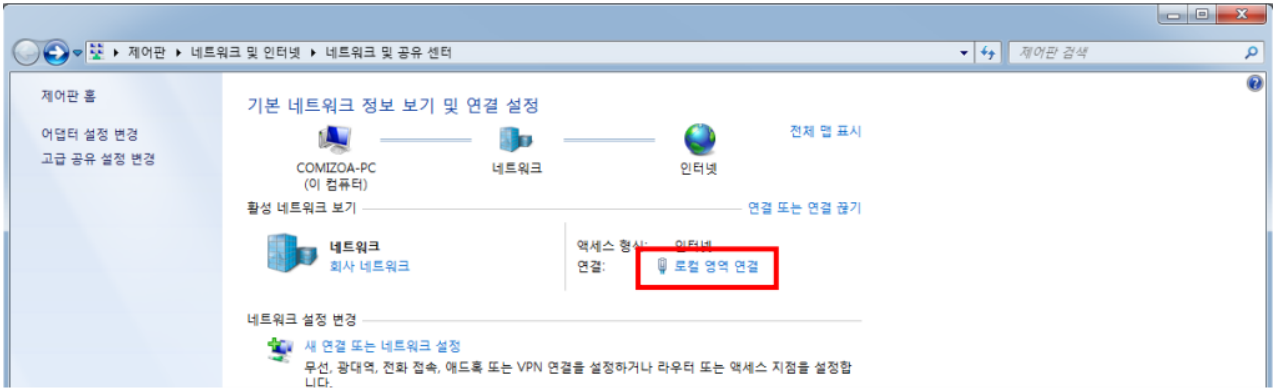
• cEIP

P LED

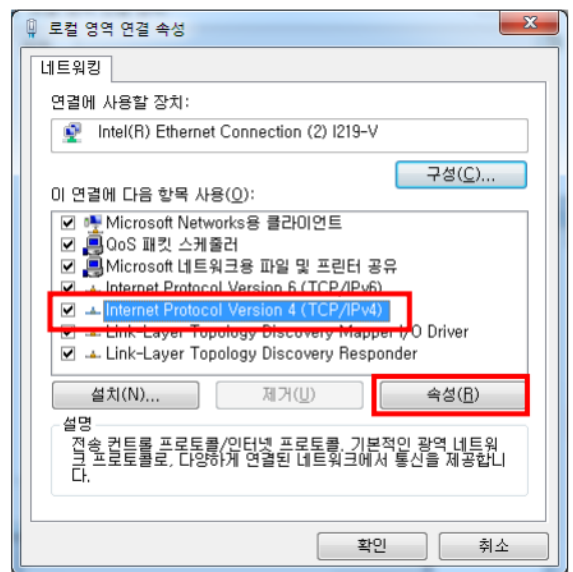
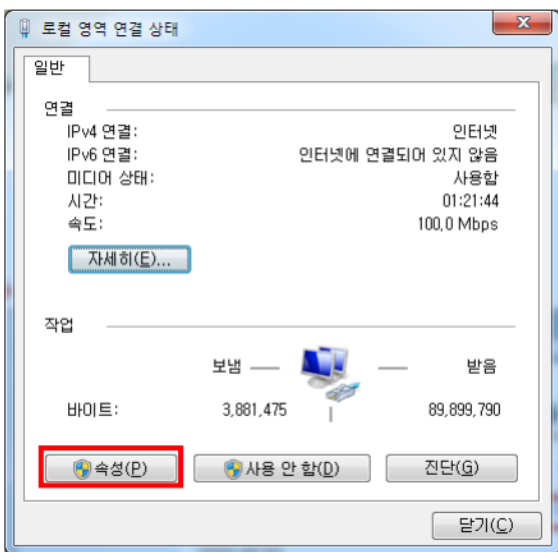
ON, A LED

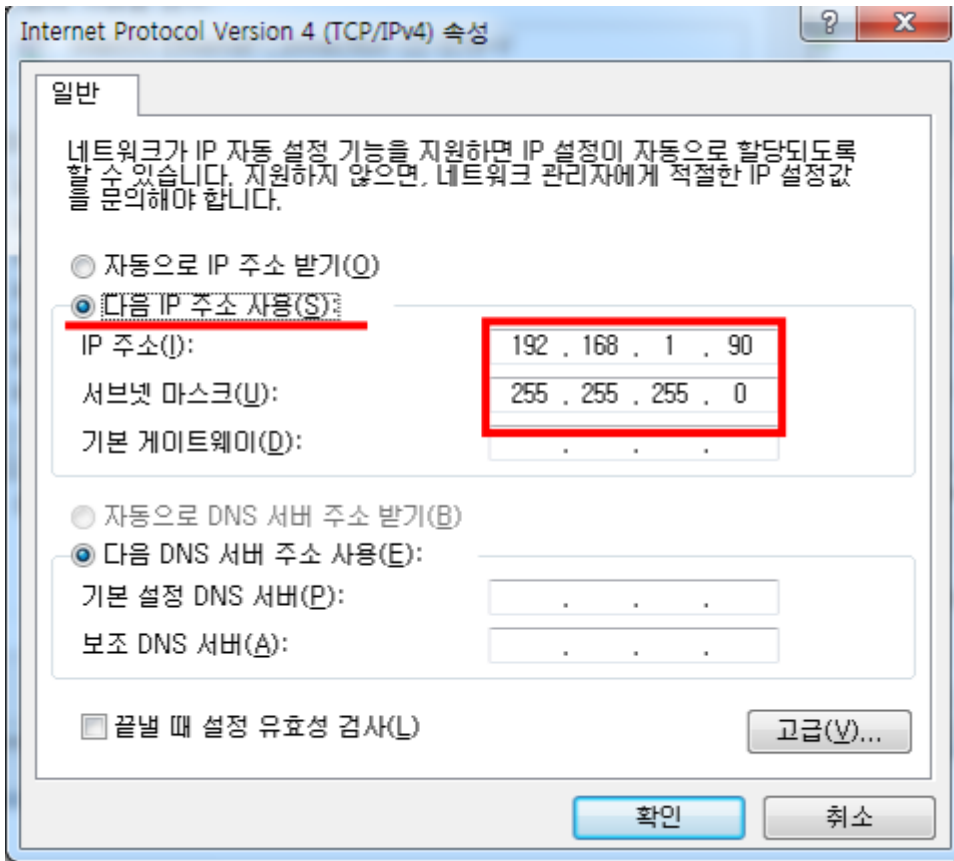
Step 2. cEIP IP





• - [] - [] - []

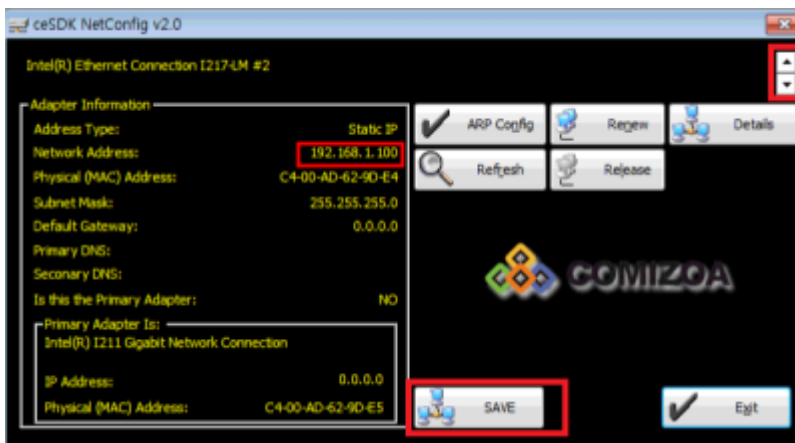




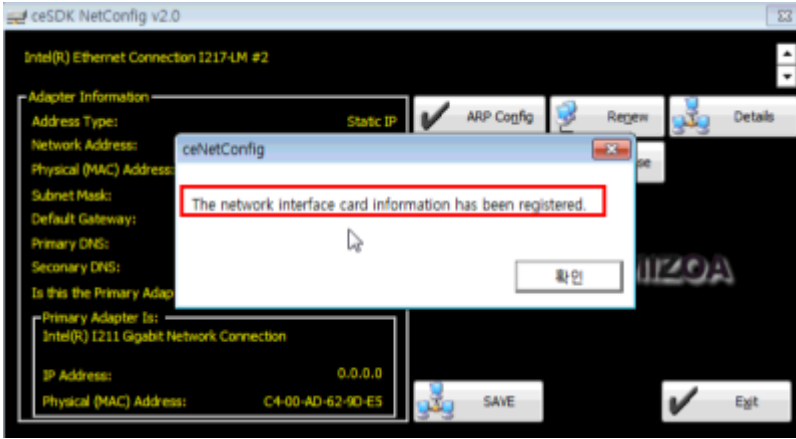
- 192.168.1.1 ~ 192.168.1.100 IP

VersionManager	2021-10-28 오후 3:36	파일 폴더	
ceNetConfig.exe	2011-03-08 오전 11:06	응용 프로그램	423KB
ceSDKDLL.dll	2019-02-22 오전 9:46	응용 프로그램 확장	3,045KB
CmeBuilder.exe	2015-05-21 오후 2:42	응용 프로그램	3,169KB
DIChecker.exe	2021-02-05 오후 1:13	응용 프로그램	22KB
MADIC.exe	2019-04-05 오후 4:49	응용 프로그램	2,849KB
RDLLMFC.dll	2009-06-09 오후 1:19	응용 프로그램 확장	32KB
VelocityGraph.exe	2013-10-31 오후 2:19	응용 프로그램	1,429KB

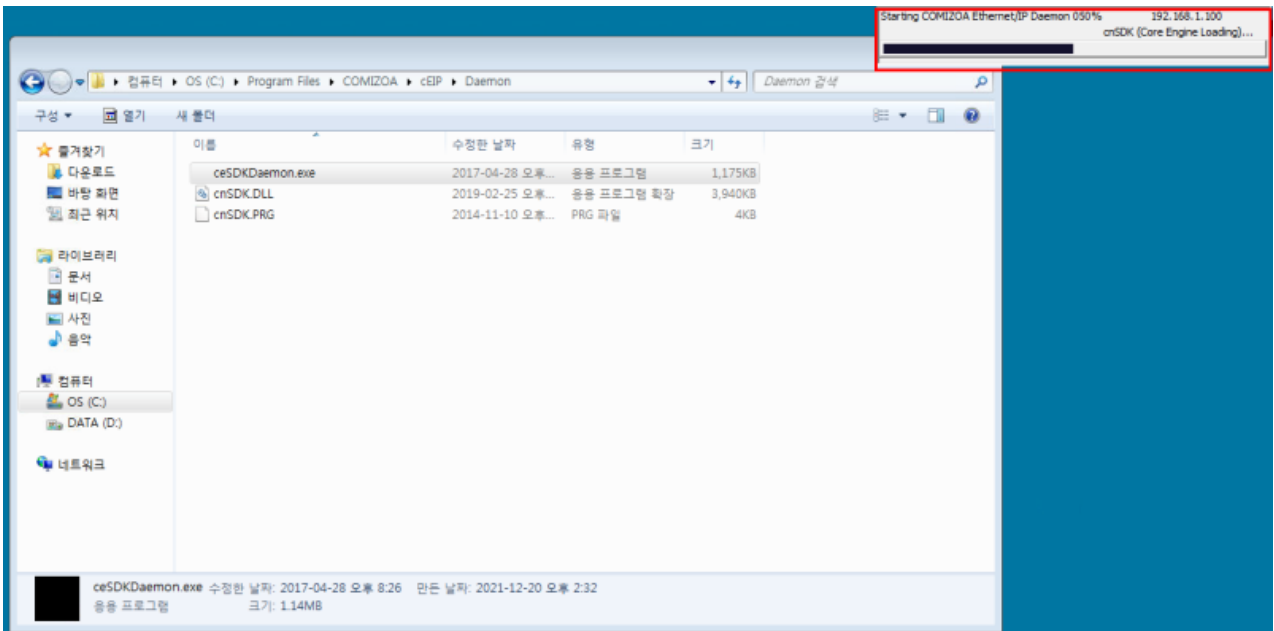
- cEIP ceNetConfig.exe



- IP
- IP가 Save



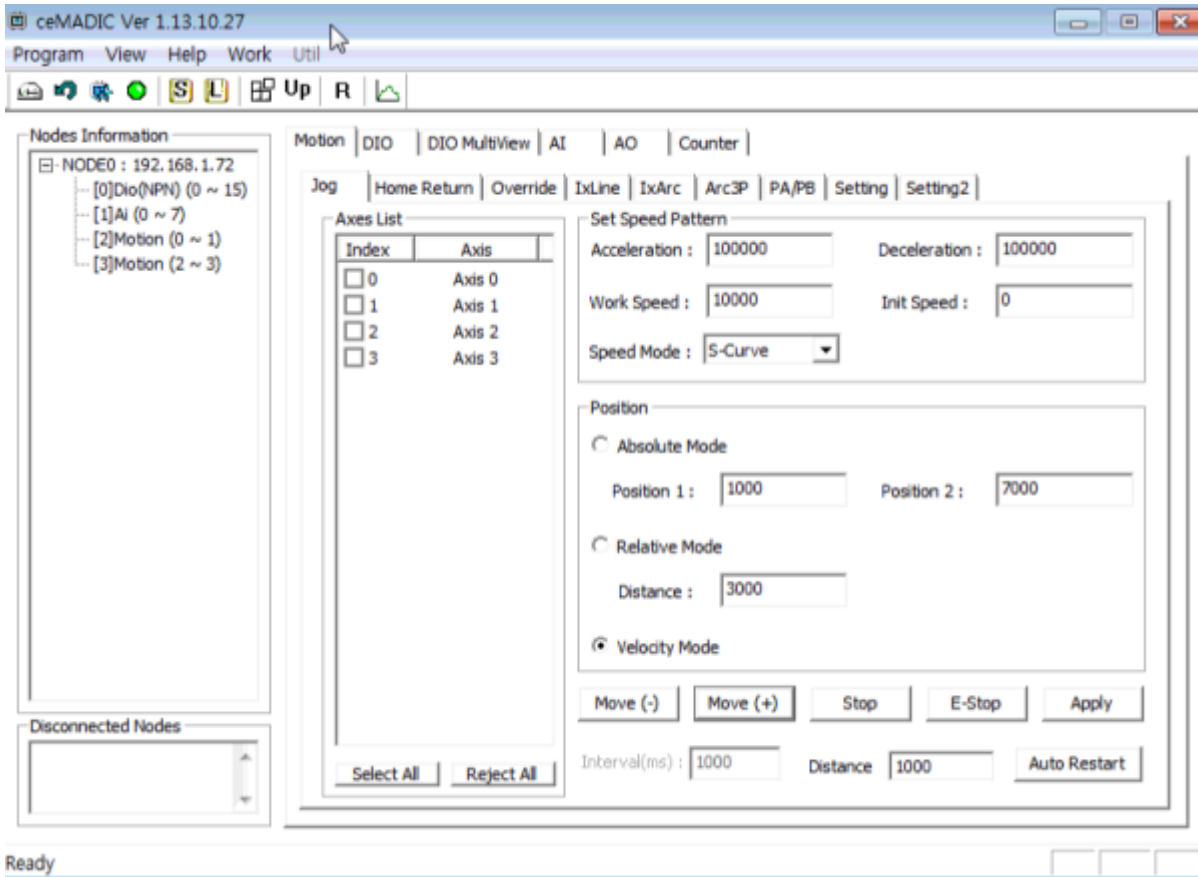
Step 3. Daemon



- cEIP ceSDKDaemon.exe
- IP가
- Daemon 가 Daemon

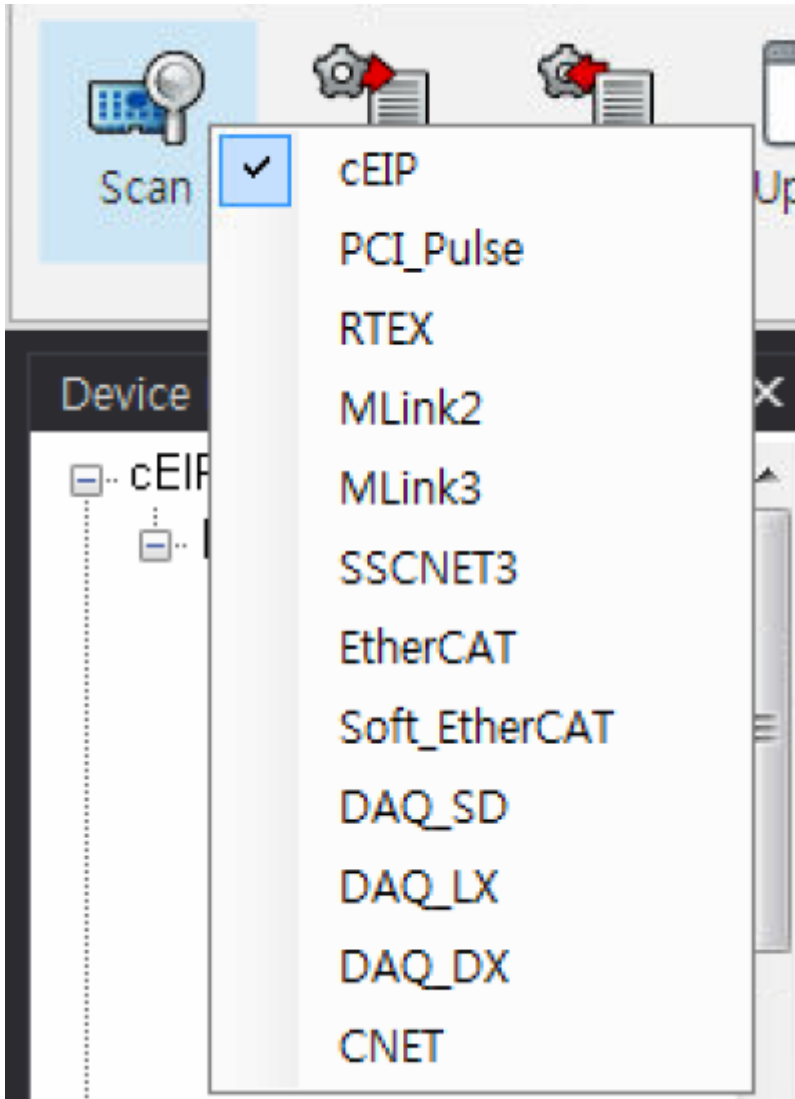
Step 4.

MADIC

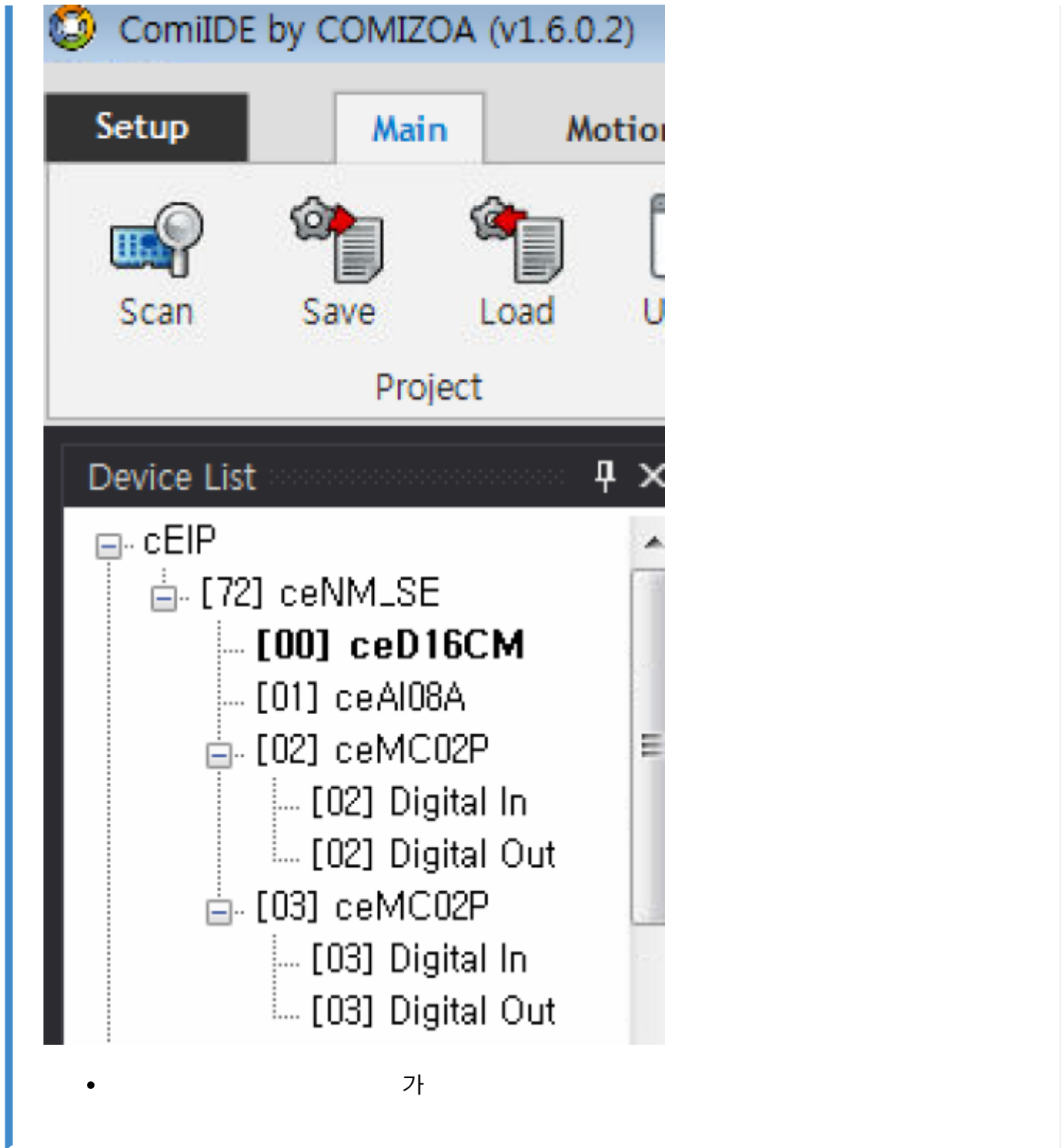


- MADIC
- 가

ComiIDE



- ComilDE Scan cEIP



See Also

[cEIP](#) [cEIP](#) [가](#)

From:

<https://www.comizoa.com/info/> - -

Permanent link:

https://www.comizoa.com/info/doku.php?id=faq:downloadandsetup:ceip:00_ceip_setup&rev=1639987401

Last update: **2024/07/08 18:22**