

cEIP 1

 가 1

..... 1

..... 2

Hardware 2

Software 2

..... 3

ceNetConfig.ini 3

..... 3

..... 3

..... 4

 가 **(Win 10)** 4

 가 **(Win 7)** 4

 가 5

Windows 5

..... 5

MADIC 6

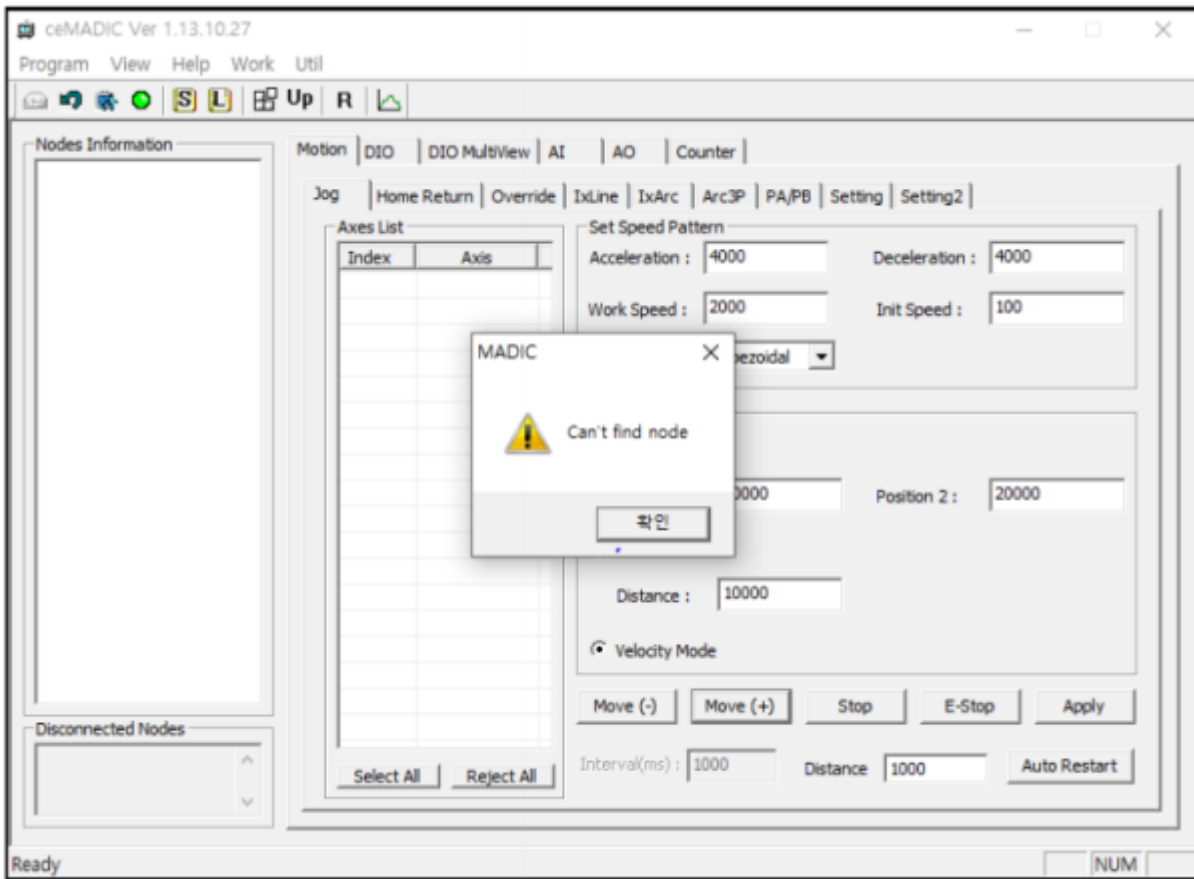
..... 6

cEIP

× cEIP

cEIP

가



- 1.
- 2. IP, SE

- 1. (Hardware)
- 2. .()
- 3. ceNetConfig.ini .
- 4. 가 .
- 5. .
- 6. .

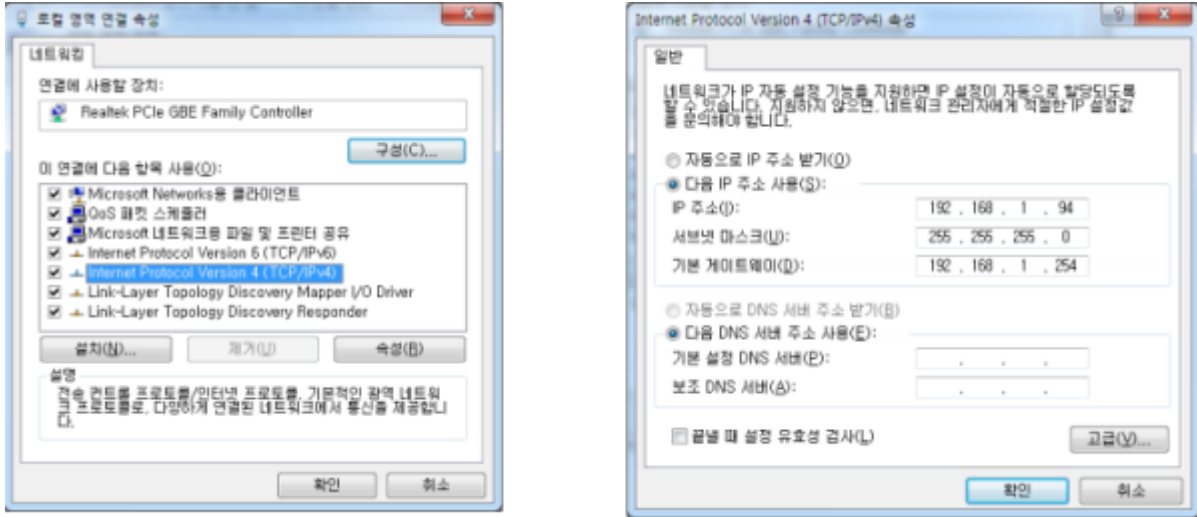
Hardware

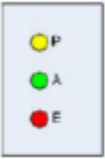
- Master IP Slave ID
- Master MSB,LSB
- Slave 가



Software

- IP Address .
(IP : 192.168.1.00, : 255.255.255.0, : 192.168.1.254)
- IP 192.168.1.1~192.168.1.254 IP .



	Name		Description
	P	Power led	모듈에 전원이 입력되면 점등됩니다.
	A	Active led	모듈이 정상동작 할 경우 점등됩니다.
	E	Error led	모듈에 에러가 발생시 점등됩니다.

- ceNM-IP(SE)

LED가 .

- 가 P A가 .

ceNetConfig.ini

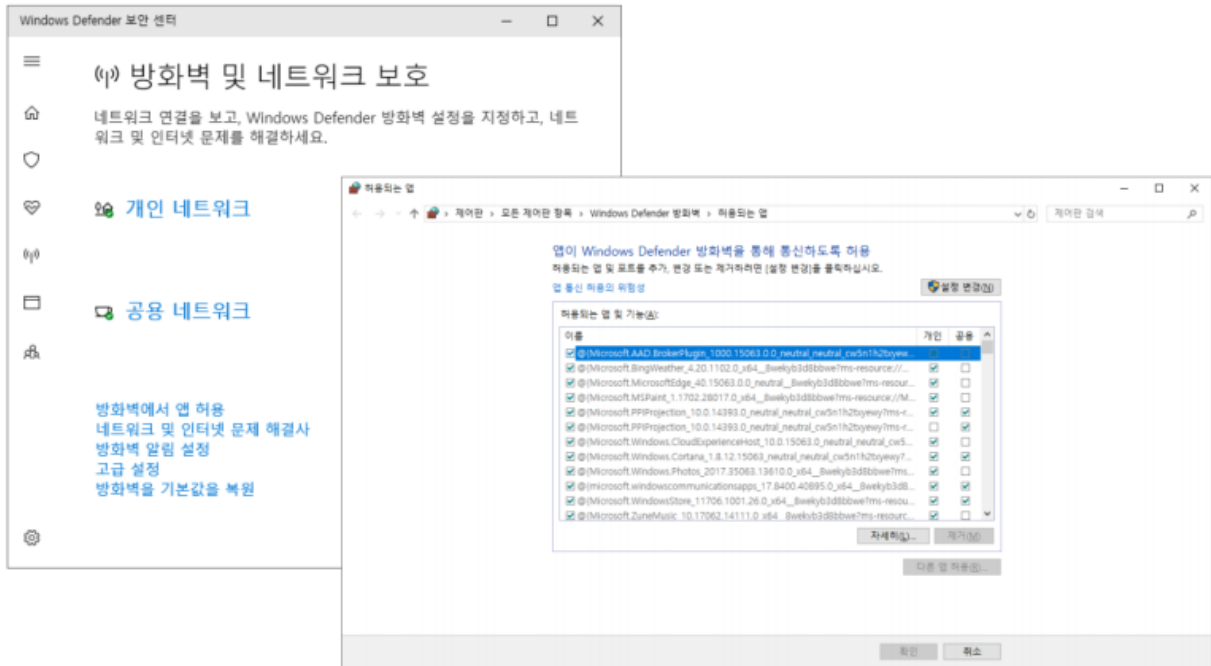
- 64bit : C:\Windows\SysWOW64\ceNetConfig.ini
- 32bit : C:\Windows\System32\ceNetConfig.ini

- - - 192.168.1. - [] - [] -

ceNetConfig.ini

- cEIP
- LAN 가 1 IP

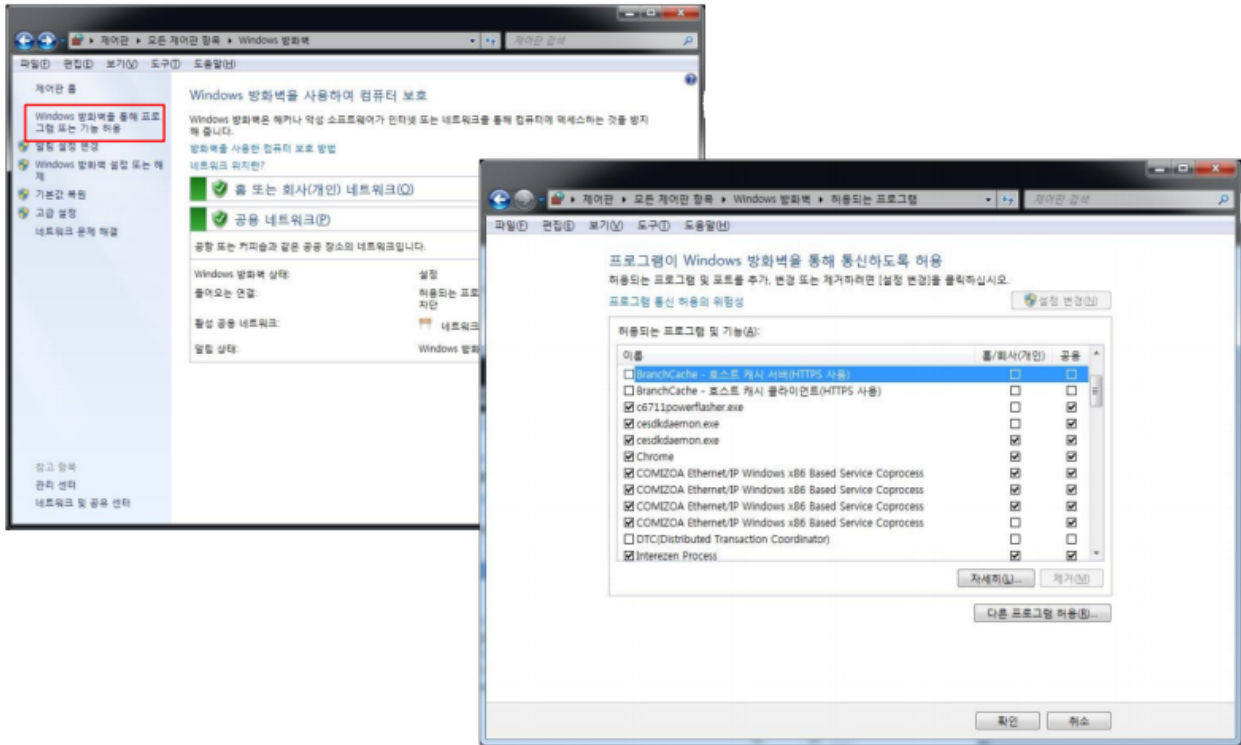
가 (Win 10)



- Windows 10

[Windows] – [] – []

가 (Win 7)



- Windows 7

[Windows] – [] – []

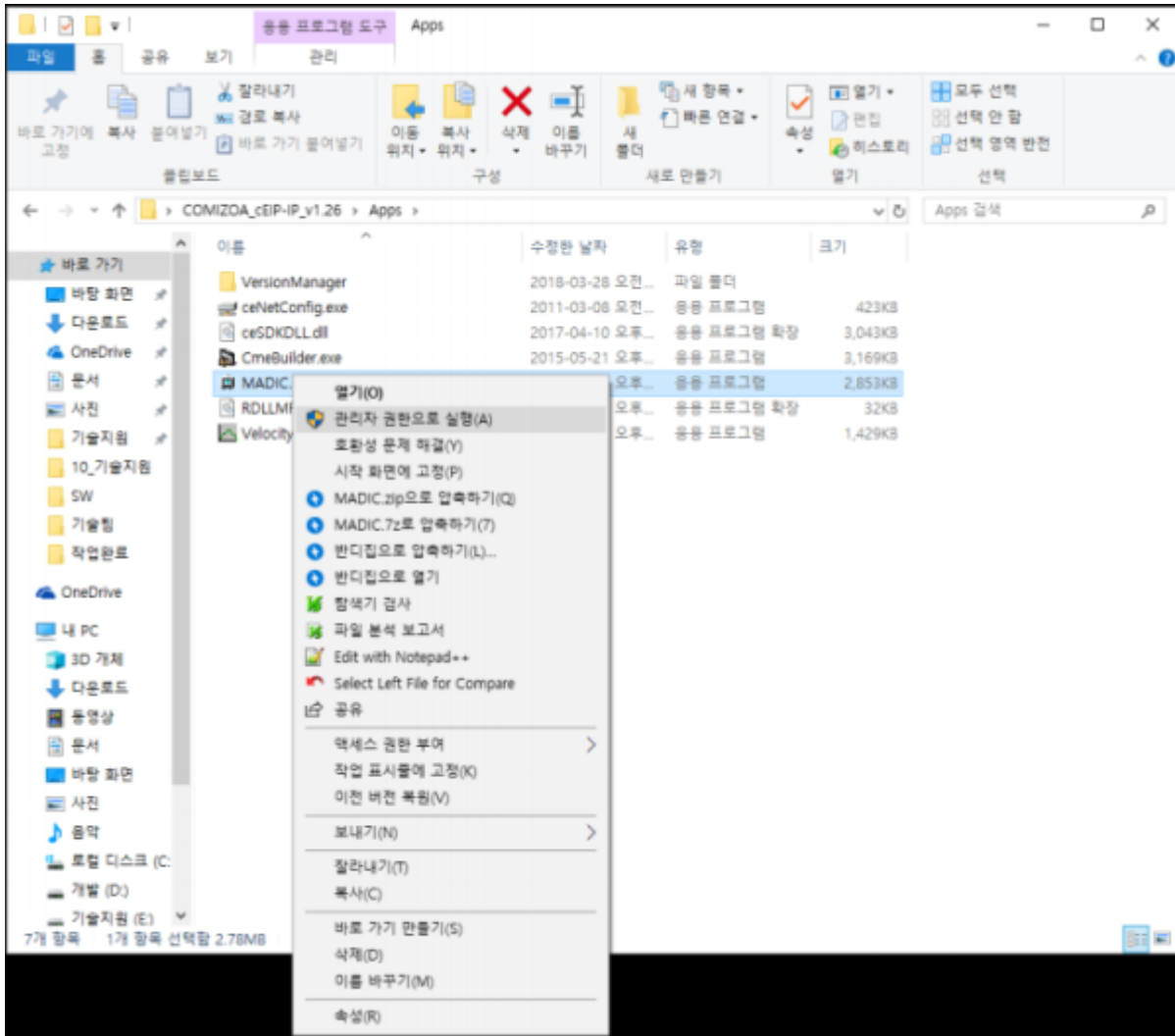
가

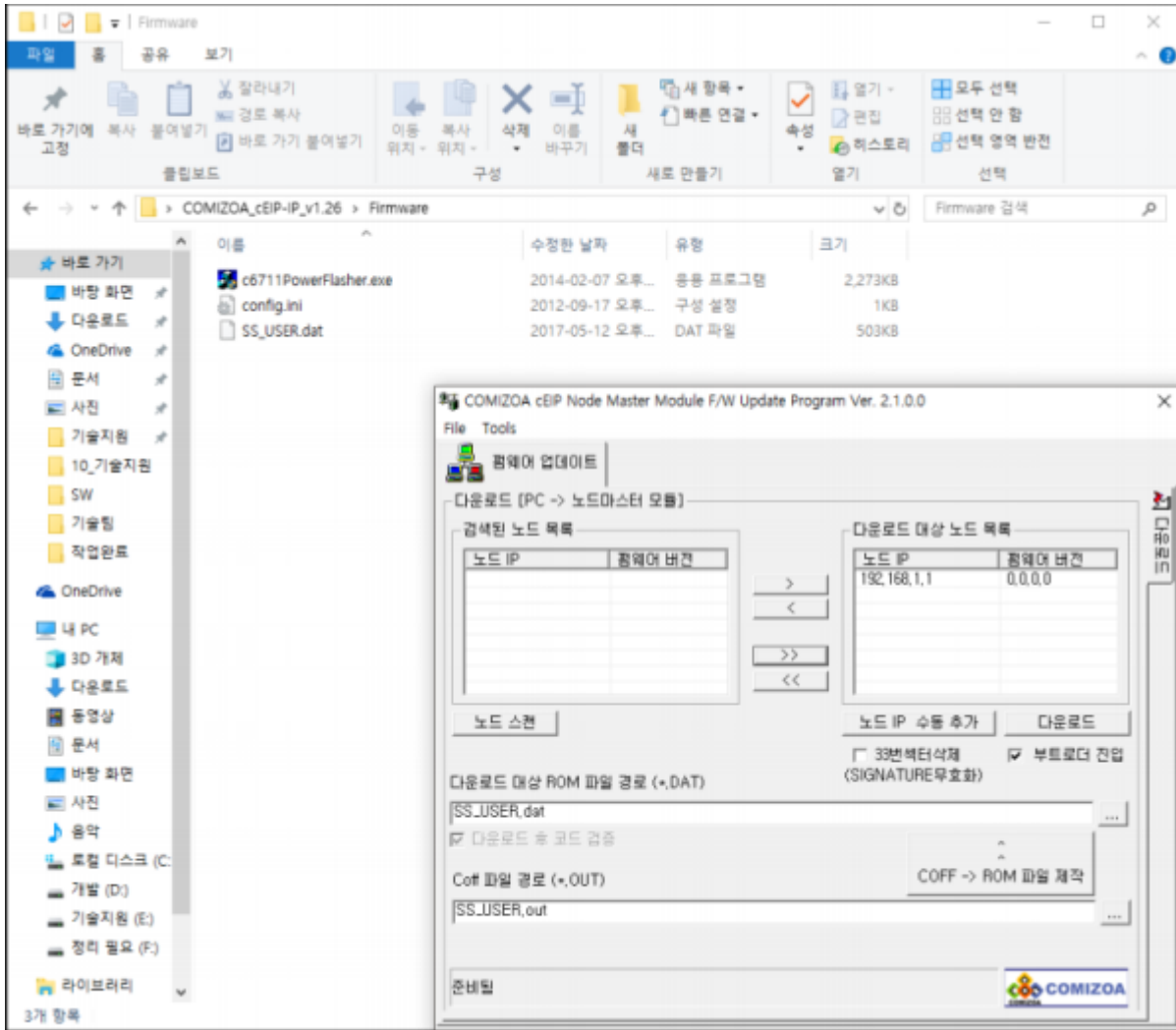
Windows

- –
- –
- C6711powerflasher.exe
- Cesdkdaemon.exe
- COMIZOA Ethernet/IP Windows x86 BasedService

Coprocess

MADIC





From:
<https://www.comizoa.com/info/> - -

Permanent link:
https://www.comizoa.com/info/doku.php?id=faq:downloadandsetup:ceip:01_slave_recognition&rev=1625638408

Last update: **2024/07/08 18:22**