

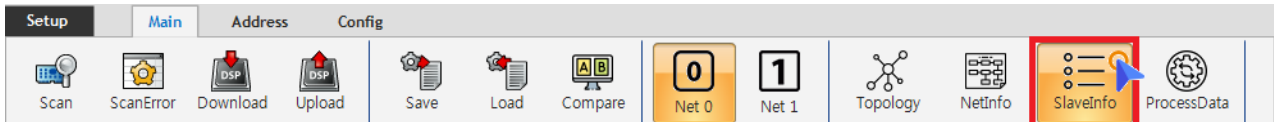
Table of Contents

- 1. **Configurator**에서 주소 변경 후 **Download** 1
- 2. **Slave EEPROM, Register** 수정 2

슬레이브 주소 수동 설정 방법


× EtherCAT Config시 슬레이브 주소를 수동으로 설정하는 방법에 대한 안내페이지입니다.

1. Configurator에서 주소 변경 후 Download



- Configurator에서 Slave Info 클릭

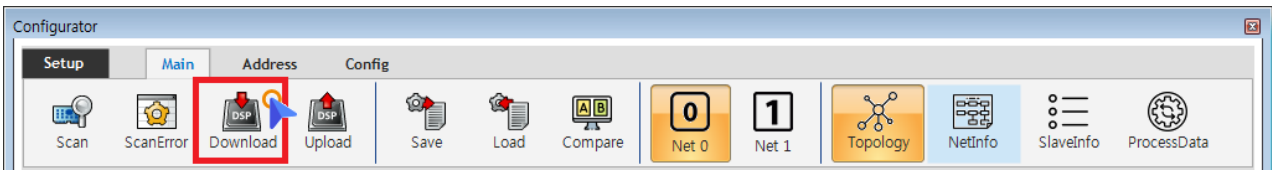
Property FMMU / SM

	Product	ETS-A0402MV-E	ProductCode	0x5032D406
	Vendor	COMIZOA	VendorID	0xAAAAAAAA
	Group	ETS	RevisionNo	0x16102400

Address	
AddressMode A	ALIAS
Alias	580
AliasLMode B	IdentificationADO
AutoAddress	-6
PhysAddr_Hex C	0244
Info	
PhysicsType	YY
SyncMode D	FreeRUN
Support	
IsAoE	False
IsCoE	True
IsFoE	True
IsMbx	True
Type	
DeviceType_401 E	AI, AO
ProfileNo	401
SubProfileNo	12

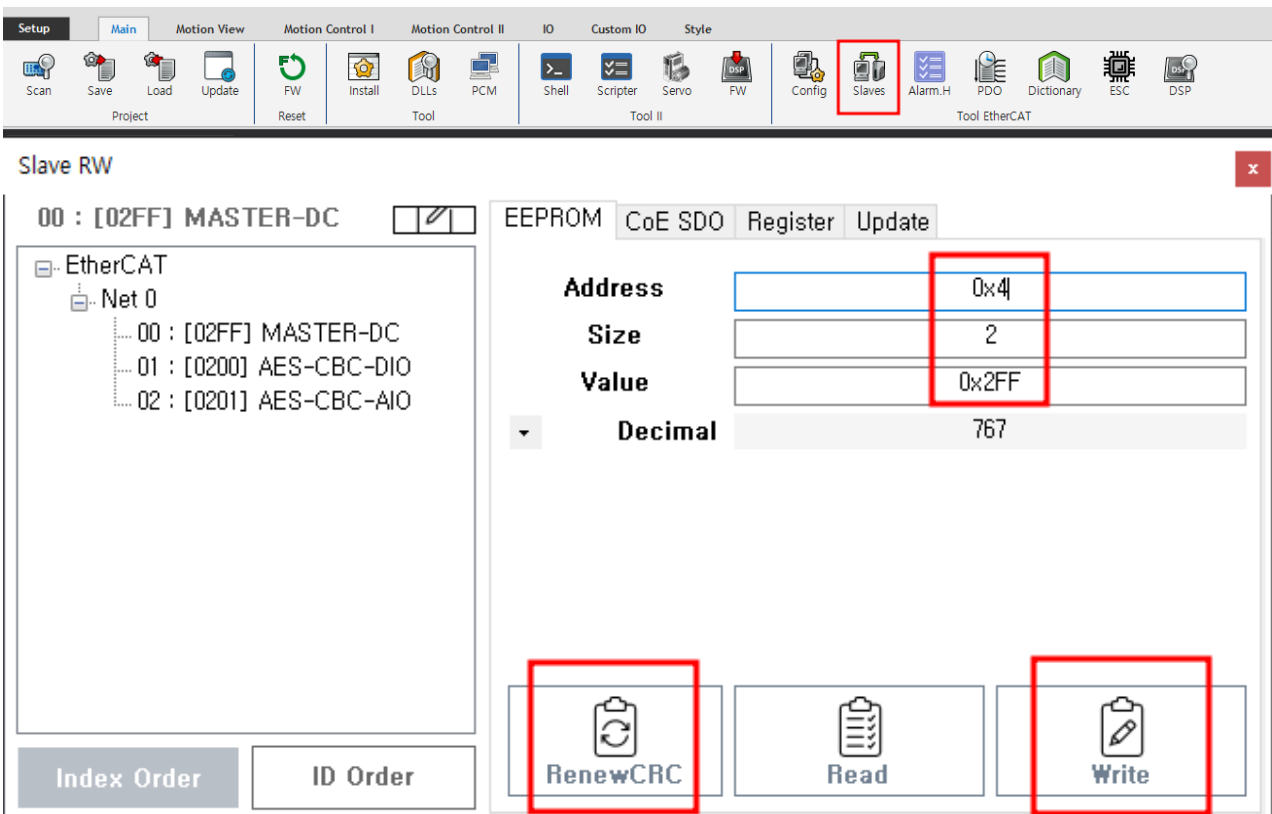
Apply All **3**

- PhysAddr_Hex를 원하는 Address로 수정



- Download 후 슬레이브의 전원을 재투입할 경우 주소 변경 완료

2. Slave EEPROM, Register 수정



1. Slave 탭 선택
2. EEPROM 0x4번지에 2바이트만큼 변경하고자 하는 Slave 주소를 Write
3. Renew CRC 버튼 클릭
4. 슬레이브 전원 재투입

The screenshot shows the 'Slave RW' application window. On the left, a tree view shows 'EtherCAT' expanded to 'Net 0', with three slave addresses listed: '00 : [02FF] MASTER-DC', '01 : [0200] AES-CBC-DIO', and '02 : [0201] AES-CBC-AIO'. The main area is titled '00 : [02FF] MASTER-DC' and has tabs for 'EEPROM', 'CoE SDO', 'Register', and 'Update'. The 'Register' tab is active, showing a table with the following fields: 'Register' (0x12), 'Size' (2), 'Value' (0x2FF), and 'Decimal' (767). A red box highlights the 'Register' field. At the bottom, there are 'Index Order' and 'ID Order' buttons, and a 'Read' button (with a clipboard icon) and a 'Write' button (with a pencil icon). The 'Read' button is also highlighted with a red box.

1. Register의 0x12번지를 Read해 슬레이브의 주소가 제대로 변경되었는지 확인

From:

<https://www.comizoa.com/info/> - -

Permanent link:

https://www.comizoa.com/info/doku.php?id=faq:downloadandsetup:ethercat:05_slave_address_set&rev=1654771356

Last update: 2024/07/08 18:22