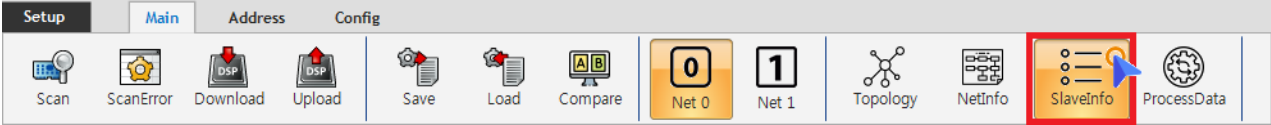


1. Configurator	Download	1
2. Slave EEPROM, Register	2

× EtherCAT Config

1. Configurator

Download



• Configurator Slave Info

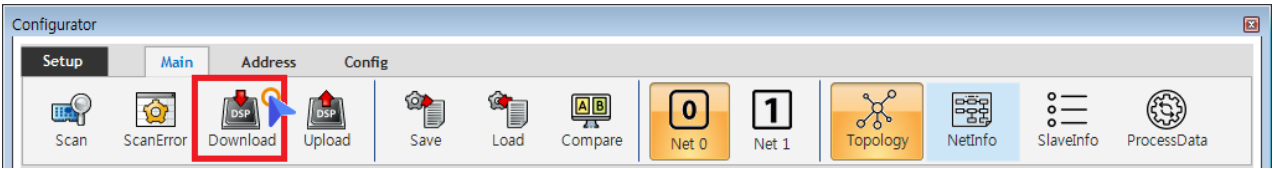
Property **FMMU / SM**

Product	ETS-A0402MV-E	ProductCode	0x5032D406
Vendor	COMIZOA	VendorID	0xAAAAAAAA
Group	ETS	RevisionNo	0x16102400

Address	
AddressMode A	ALIAS
Alias	580
AliasILMode B	IdentificationADO
AutoAddress	-6
PhysAddr_Hex C	0244
Info	
Physics Type	YY
SyncMode D	FreeRUN
Support	
IsAoE	False
IsCoE	True
IsFoE	True
IsMbx	True
Type	
DeviceType_401 E	AI, AO
ProfileNo	401
SubProfileNo	12

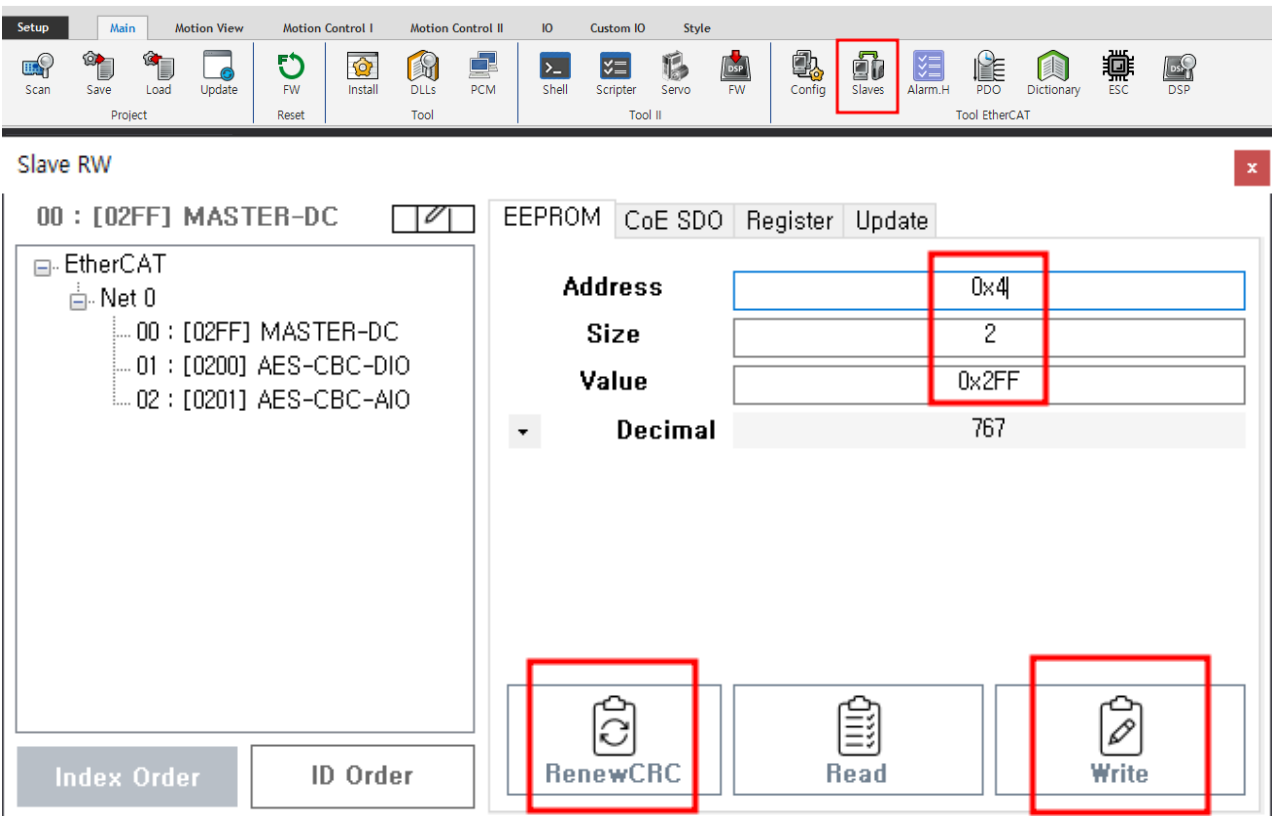
Apply All **3**

• PhysAddr_Hex Address



1. Download
- 2.

2. Slave EEPROM, Register



1. Slave
2. EEPROM 0x4 2 Slave Write
3. Renew CRC
- 4.

The screenshot shows the 'Slave RW' application window. On the left, a tree view shows 'EtherCAT' expanded to 'Net 0', with three registers listed: '00 : [02FF] MASTER-DC', '01 : [0200] AES-CBC-DIO', and '02 : [0201] AES-CBC-AIO'. The main area is titled '00 : [02FF] MASTER-DC' and has tabs for 'EEPROM', 'CoE SDO', 'Register', and 'Update'. The 'Register' tab is active, showing a table with the following fields: 'Register' (0x12), 'Size' (2), 'Value' (0x2FF), and 'Decimal' (767). A red box highlights the 'Register' field. Below the table, there are 'Read' and 'Write' buttons, with the 'Read' button also highlighted by a red box. At the bottom, a list shows '1. Register 0x12 Read' followed by the Korean character '가'.

From: <https://www.comizoa.com/info/> - -

Permanent link: https://www.comizoa.com/info/doku.php?id=faq:downloadandsetup:ethercat:05_slave_address_set&rev=1654772207

Last update: 2024/07/08 18:22