

- ..... 1
- ..... 1
- 1. COMIZOA AI/O Slave** ..... 1
  - Solution ..... 1
- 2. Slave** ..... 2
  - Case 1 ..... 2
  - Case 2 ..... 2
  - Solution ..... 2

# Slave

× Slave AI/O Channel

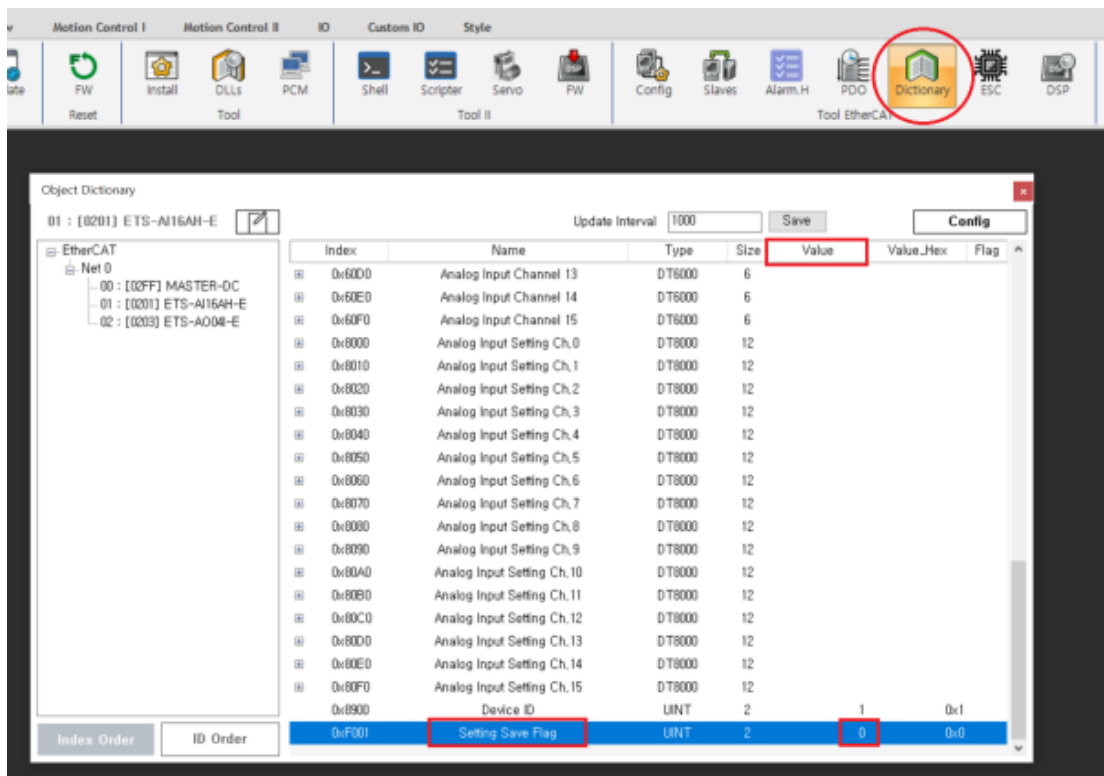
(Range Mode, Analog Type)

- Slave AI/O Channel Setting
- Setting module

- Slave Slave
- [http://comizoa.co.kr/info/\\_media/download:10\\_ethercat:ets\\_sw\\_manual.pdf](http://comizoa.co.kr/info/_media/download:10_ethercat:ets_sw_manual.pdf) 17.Page

## 1. COMIZOA AI/O Slave

### Solution



○ Range Mode, Analog Type                      Setting Save Flag                      0  
 1                      . ( 0 1 )

# 2. Slave

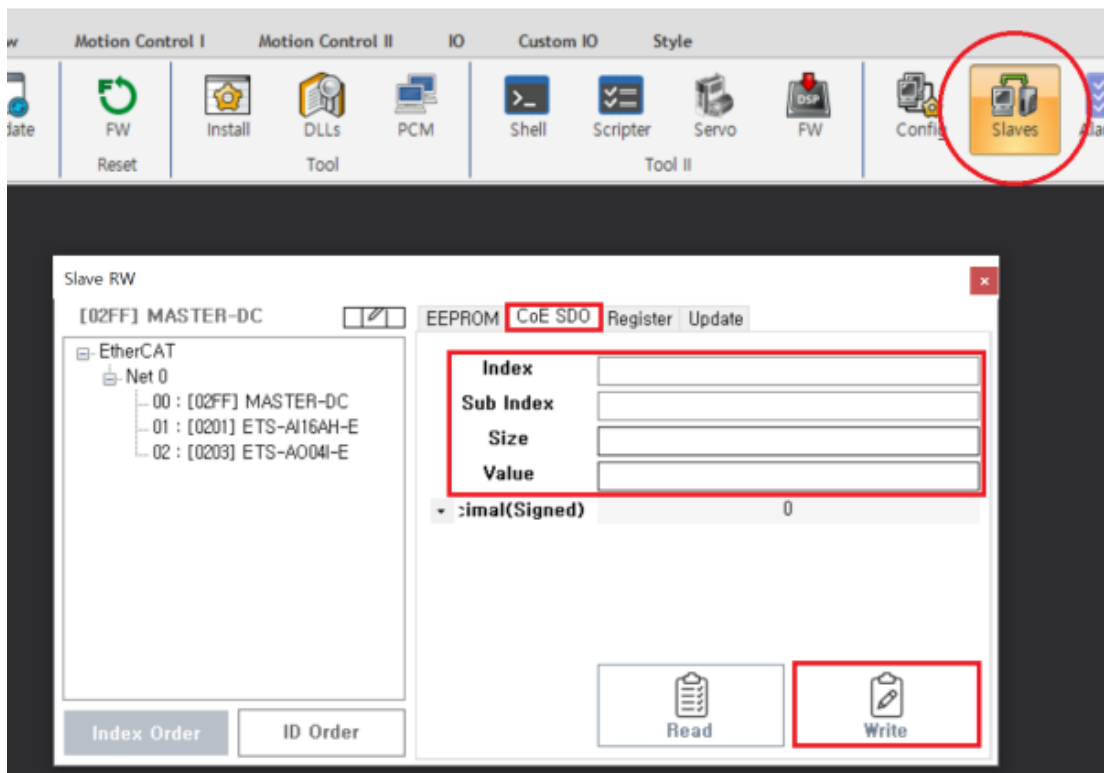
## Case 1

\* COMIZOA 가 Dictionary , Dictionary

## Case 2

\* Dictionary

### Solution



- ComiIDE-Slaves-CoE SDO Index,Sub Index,Size,Value Write
- Sub index = 0, Value = 1 . ( )

Module Slave 가 .

From: <https://www.comizoa.com/info/> --

Permanent link: [https://www.comizoa.com/info/doku.php?id=faq:downloadandsetup:ethercat:07\\_slave\\_save\\_flag&rev=1691730848](https://www.comizoa.com/info/doku.php?id=faq:downloadandsetup:ethercat:07_slave_save_flag&rev=1691730848)

Last update: 2024/07/08 18:22

