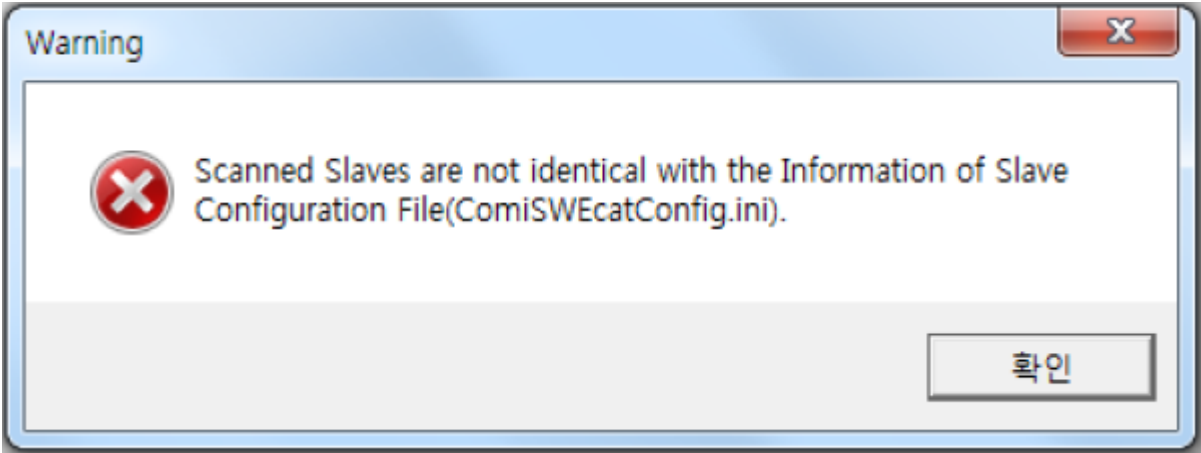




# ComiSWEcatConfig.ini

× SW Configuration File      Daemon 가      Scanned Slaves are not identical with the Information of Slave Configuration File .

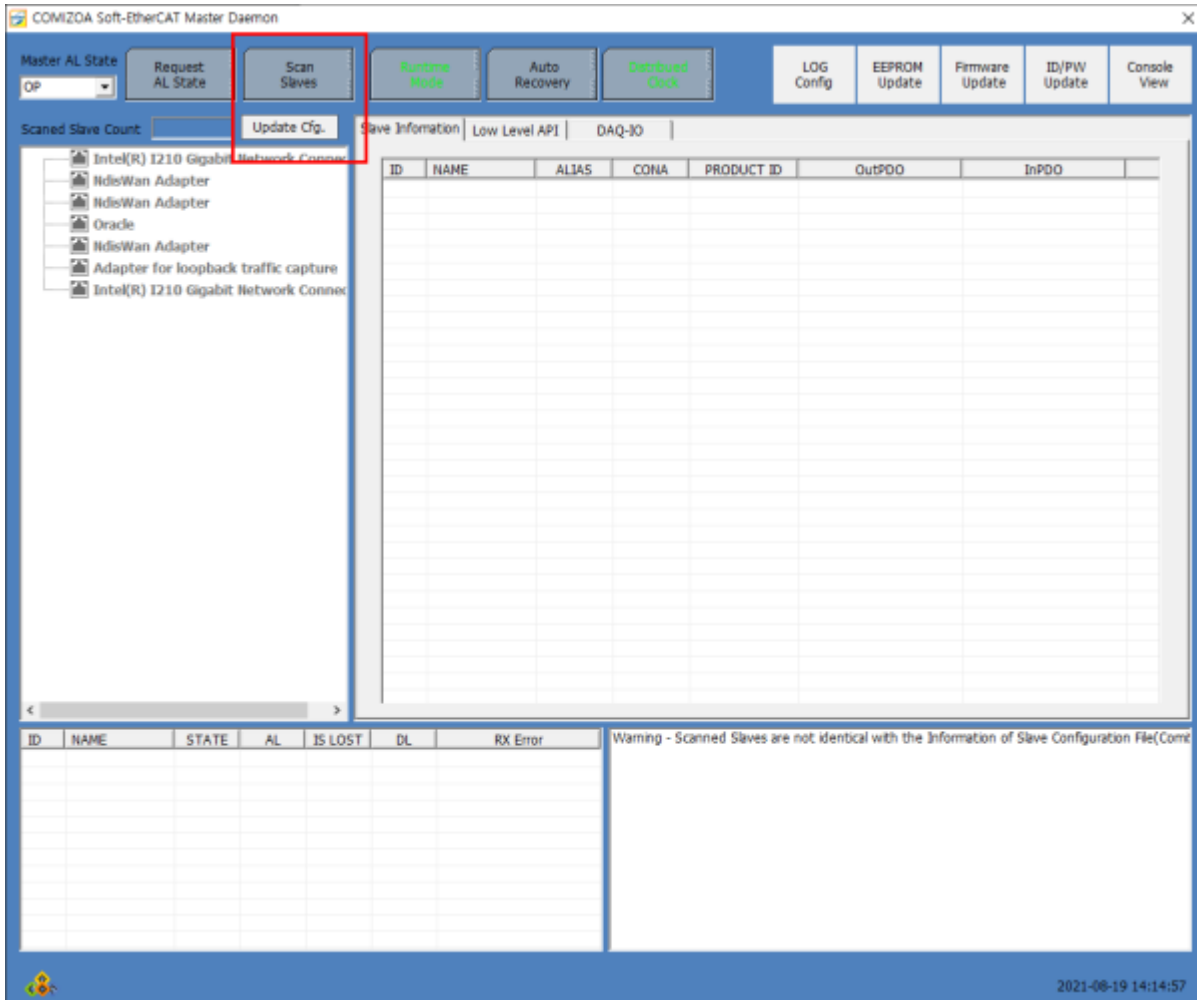
## 1. .ini 가



- SW Configuration File      Daemon 가      Scanned Slaves are not identical with the Information of Slave Configuration File
- Daemon 가      Scanned Slaves are not identical with the Information of Slave Configuration File

- Daemon 가      ComiSWEcatConfig.ini

<!-- Empty content area -->



- 1. Scan Slaves
- 2. Update Cfg. <sup>1)</sup>

1)

ComiSWEcatConfig.ini

From:  
<https://www.comizoa.com/info/> - -

Permanent link:  
[https://www.comizoa.com/info/doku.php?id=faq:downloadandsetup:ethercat\\_sw:01\\_ini\\_file&rev=1629350201](https://www.comizoa.com/info/doku.php?id=faq:downloadandsetup:ethercat_sw:01_ini_file&rev=1629350201)

Last update: **2024/07/08 18:22**