

- 1. Comizoa Serial Daemon** ..... 1
- 2.       **Setup** ..... 1
  - 가 ..... 1
    - EtherCAT Master Configuration ..... 1
    - Serial Daemon Licence Key ..... 2
- 3.       ..... 2
  - COM Port ..... 2
    - Serial Channel ..... 3
      - ..... 5
    - Mapping ..... 6
  - Mapping ..... 6
  - Mapping ..... 7

# Comizoa Serial Daemon

× Comizoa Serial Daemon

× Serial Daemon

Comizoa EtherCAT

가

가

## 1. Comizoa Serial Daemon

Serial\_Daemon (v1.1.1.3)

Auto Save  Alias Mode

Port Mapping

Num	COM Port	Channel	Baudrate
1	COM 5	Ch.0(1[0])	115,200
2	COM 6	Ch.1(1[0])	115,200
3	COM10	Ch.2(1[0])	57,600
4	COM11	Ch.3(1[0])	57,600

Port Setting

COM Port: COM 5

Serial Channel: CH 0(Idx: 1[0])

Baudrate: 115,200

Data Bits: 8 Bit

Stop Bits: 1 Bit

Parity: None

Serial Mode: RS-232/422

Buttons: Mapping, Modify, Remove

- Serial Daemon <sup>1)</sup> PDO,SDO 가
- Windows 가

## 2. Setup

가

- 가

**EtherCAT Master Configuration**

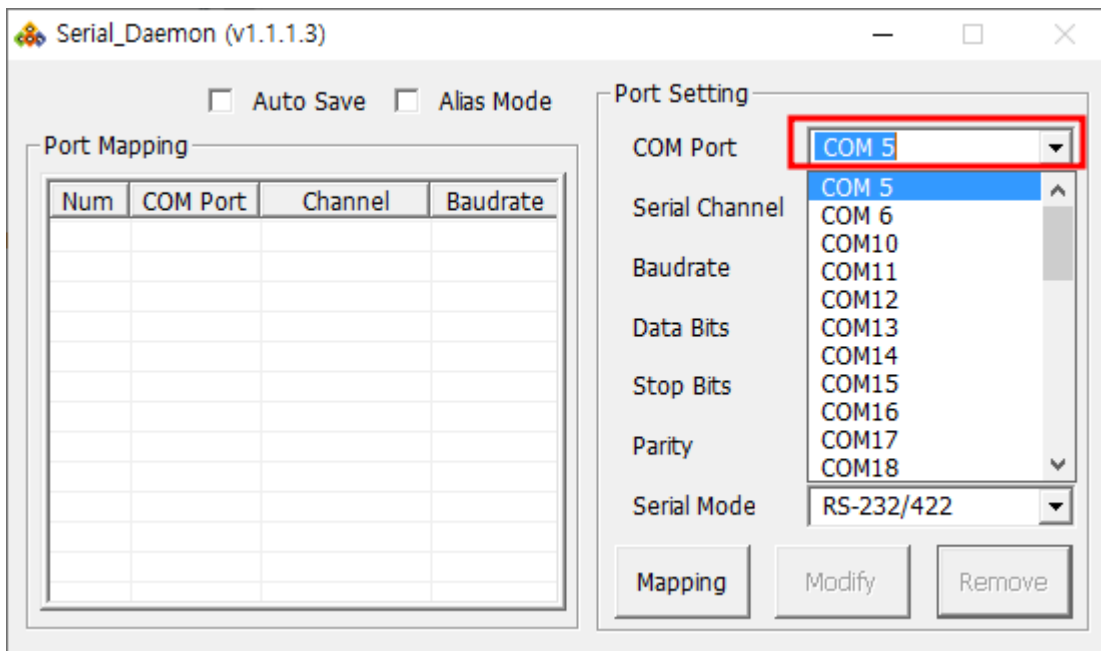
- PCI

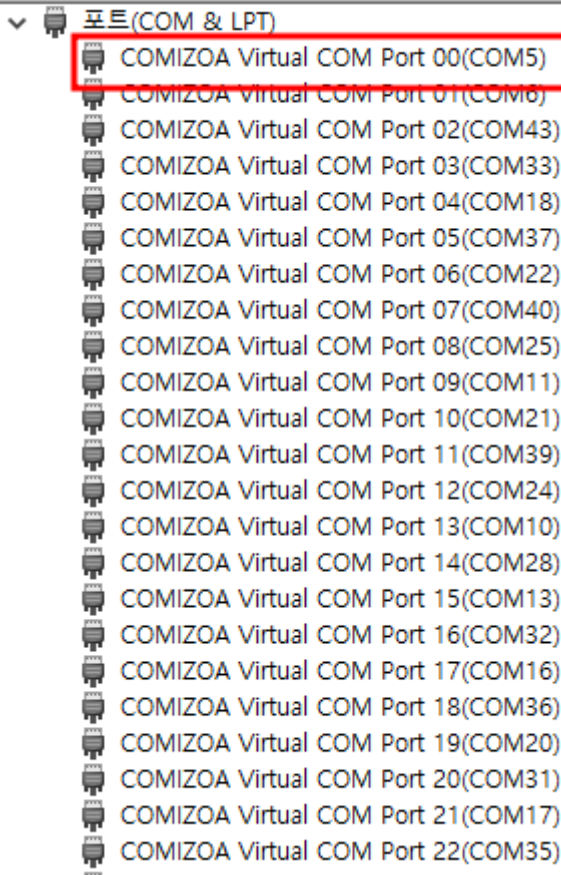
### Serial Daemon Licence Key

- Serial Daemon Comizoa 가 .
- Serial Daemon

3.

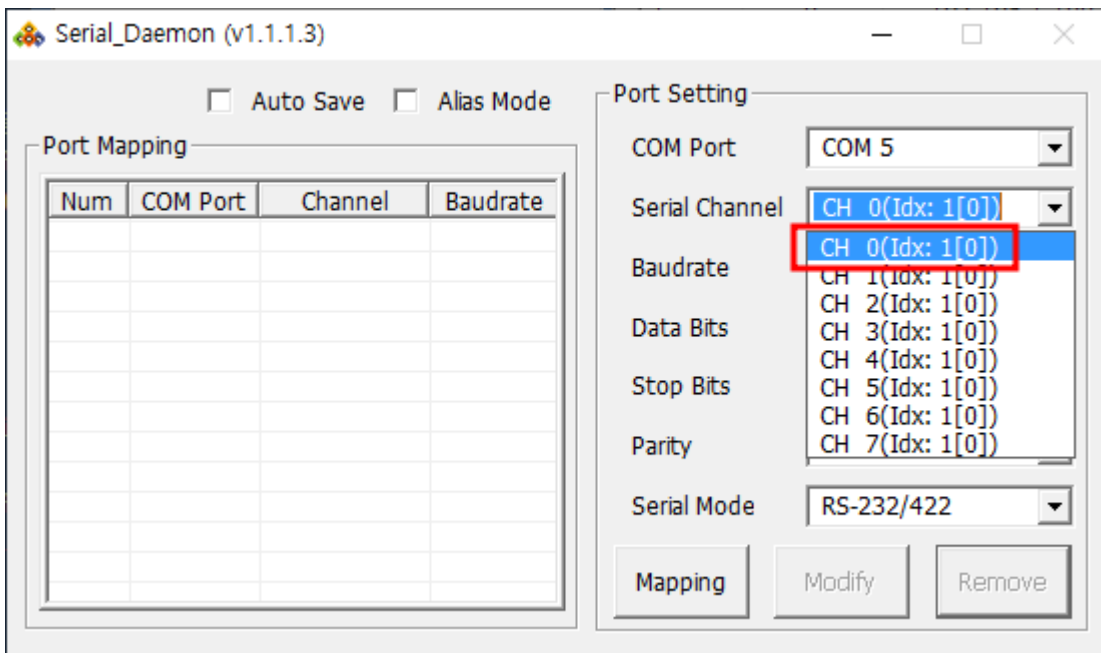
### COM Port

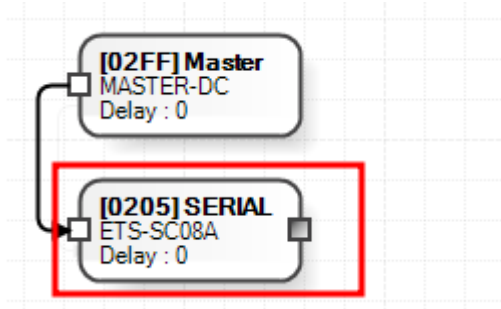




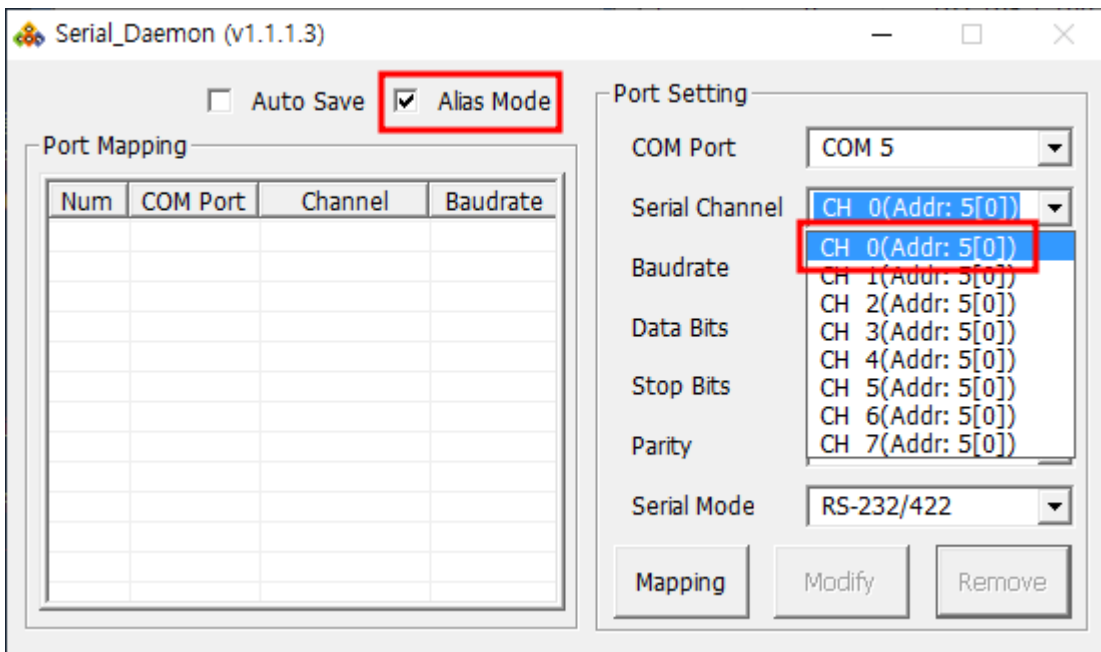
- 가 COM Port

### Serial Channel





- ComboBox Mapping
- Serial Channel
- { } (idx: { } [ { } ] )
- 1 0

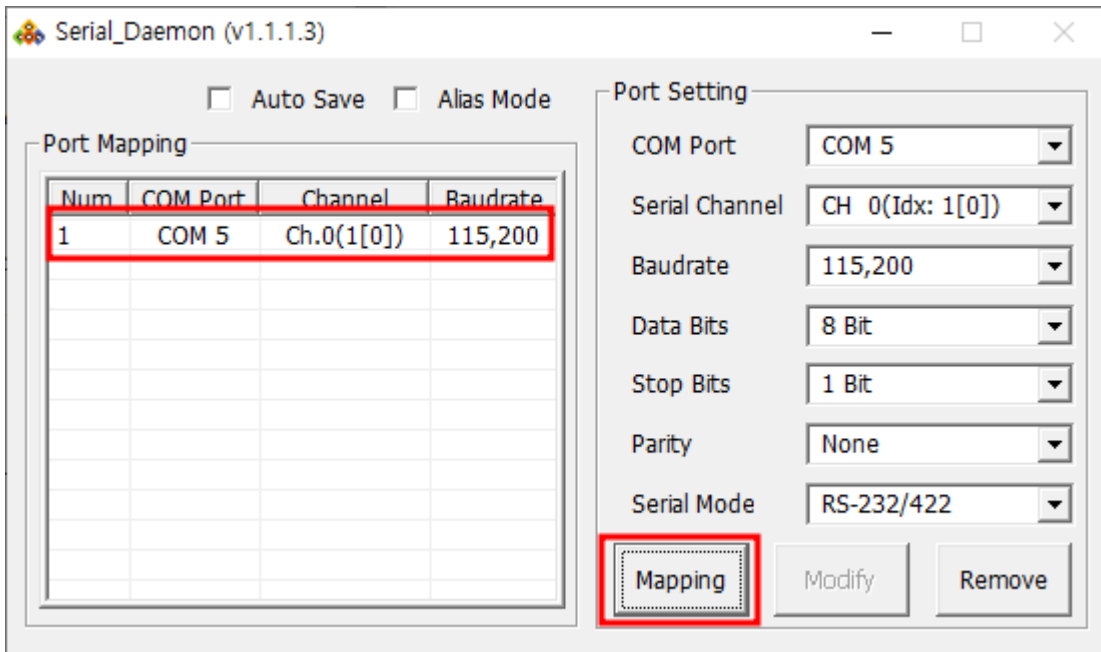






- 

### Mapping



- 

Mapping

**Mapping**

### Mapping

Serial\_Daemon (v1.1.1.3)

Auto Save  Alias Mode

Port Mapping

Num	COM Port	Channel	Baudrate
1	COM 5	Ch.0(1[0])	115,200
2	COM 6	Ch.1(1[0])	115,200
3	COM10	Ch.2(1[0])	57,600
4	COM11	Ch.3(1[0])	57,600
5	COM12	Ch.4(1[0])	57,600

Port Setting

COM Port: COM12  
Serial Channel: CH 4(Idx: 1[0])  
Baudrate: 57,600  
Data Bits: 8 Bit  
Stop Bits: 1 Bit  
Parity: None  
Serial Mode: RS-485

Buttons: Mapping, Modify, Remove

Serial\_Daemon (v1.1.1.3)

Auto Save  Alias Mode

Port Mapping

Num	COM Port	Channel	Baudrate
1	COM 5	Ch.0(5[0])	115,200
2	COM 6	Ch.1(5[0])	115,200
3	COM10	Ch.2(5[0])	57,600
4	COM11	Ch.3(5[0])	57,600

Port Setting

COM Port: COM12  
Serial Channel: CH 4(Addr: 5[0])  
Baudrate: 57,600  
Data Bits: 8 Bit  
Stop Bits: 1 Bit  
Parity: None  
Serial Mode: RS-485

Buttons: Mapping, Modify, Remove

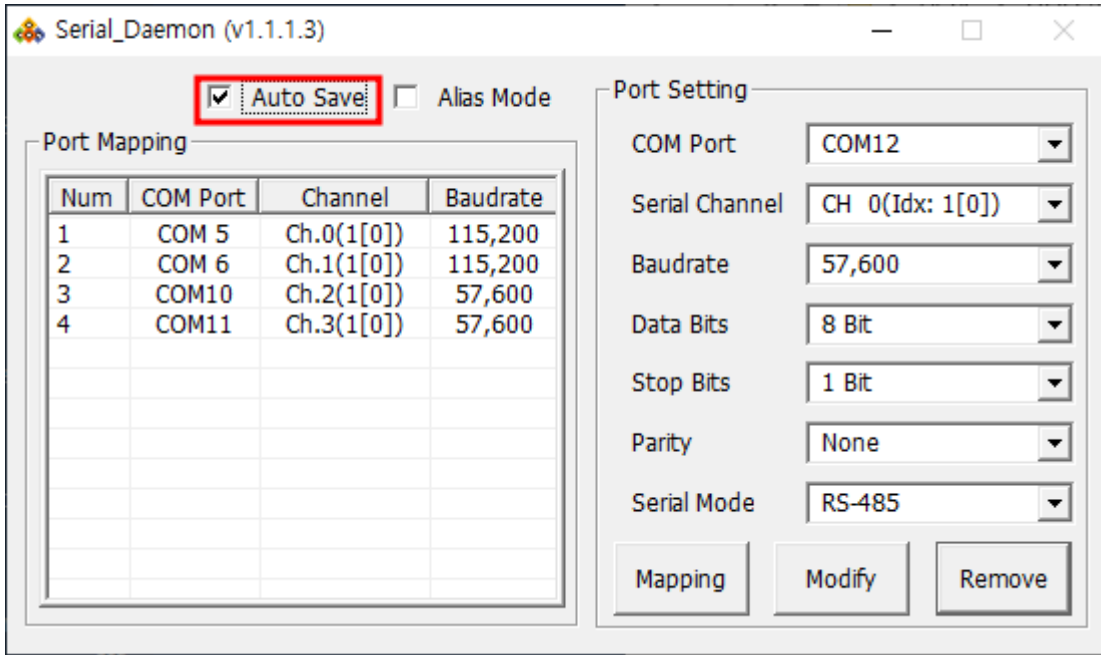
- Mapping **Remove**

### Mapping

Serial\_Daemon

매핑 정보를 저장 하시겠습니까?

Buttons: 예(Y), 아니요(N)



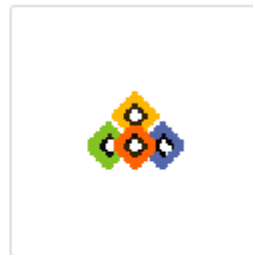
- Mapping
- Mapping
- Info.INI
- - **Auto Save**



Info.ini



LXUARTCON.dll



Serial\_Daemon.exe

