

- 1. Comizoa Serial Daemon** ..... 1
- 2.       **Setup** ..... 1
  - 가 ..... 1
    - EtherCAT Master Configuration ..... 2
    - Serial Daemon Licence Key ..... 2
- 3.       ..... 2
  - COM Port ..... 2
    - Serial Channel ..... 3
      - ..... 5
    - Mapping ..... 6
    - Mapping ..... 6
    - Mapping ..... 7
    - Serial ..... 9

# Comizoa Serial Daemon

× Comizoa Serial Daemon

× Serial Daemon

Comizoa EtherCAT

가

가

## 1. Comizoa Serial Daemon

Serial\_Daemon (v1.1.1.3)

Auto Save  Alias Mode

Port Mapping

Num	COM Port	Channel	Baudrate
1	COM 5	Ch.0(1[0])	115,200
2	COM 6	Ch.1(1[0])	115,200
3	COM10	Ch.2(1[0])	57,600
4	COM11	Ch.3(1[0])	57,600

Port Setting

COM Port: COM 5

Serial Channel: CH 0(Idx: 1[0])

Baudrate: 115,200

Data Bits: 8 Bit

Stop Bits: 1 Bit

Parity: None

Serial Mode: RS-232/422

Buttons: Mapping, Modify, Remove

- Serial Daemon <sup>1)</sup> PDO,SDO 가

Windows 가 .

## 2. Setup

가

- 가
- 가 .zip
- temp
- 가

### EtherCAT Master Configuration

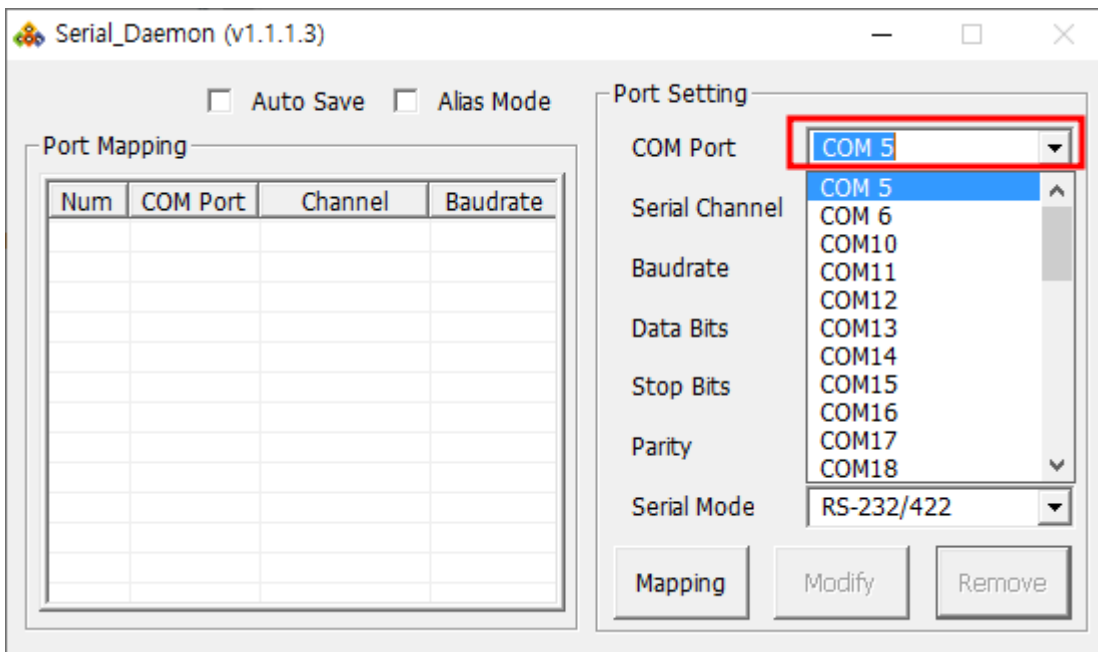
- PCI

### Serial Daemon Licence Key

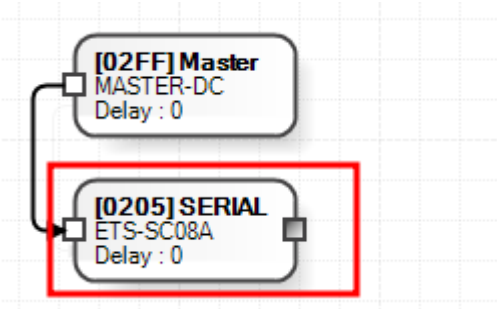
- Serial Daemon  
Comizoa 가 .
  - Serial Daemon

3.

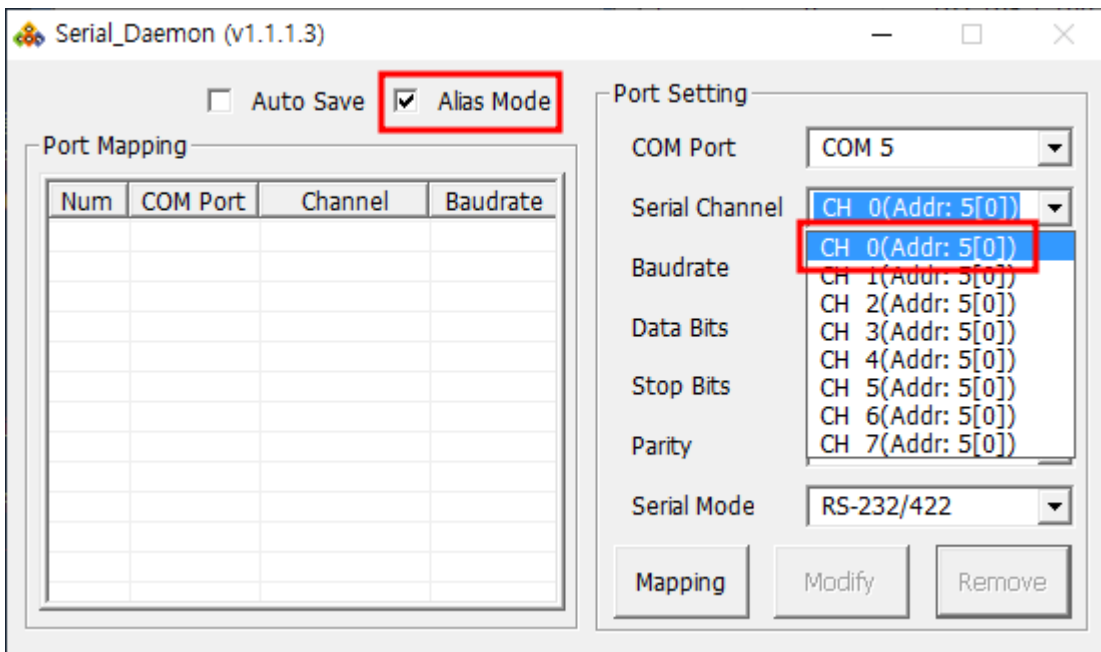
### COM Port

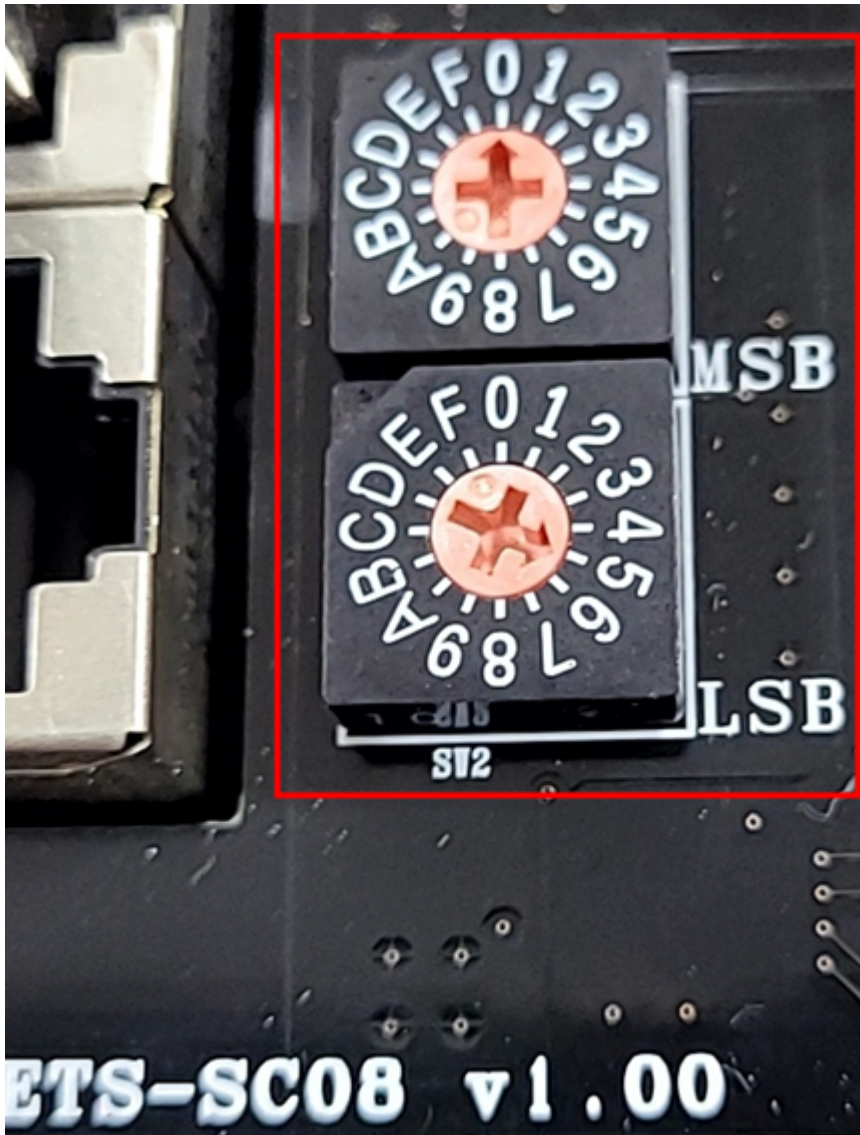






- ComboBox Mapping
- Serial Channel
- { } (idx: { } [ { } ] 1 0



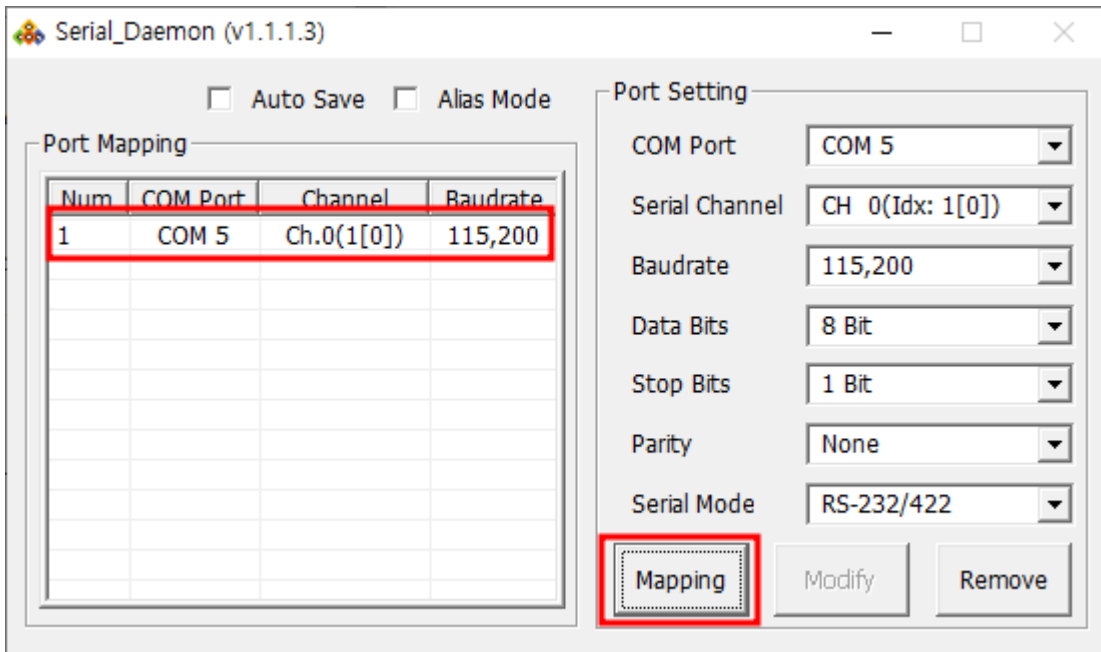


- Alias
  - {
    - Serial Channel
    - }(idx:{
      - }]
      - Physical Address가 5
      - 0



- 

### Mapping



- 

Mapping

**Mapping**

### Mapping

Serial\_Daemon (v1.1.1.3)

Auto Save  Alias Mode

Port Mapping

Num	COM Port	Channel	Baudrate
1	COM 5	Ch.0(1[0])	115,200
2	COM 6	Ch.1(1[0])	115,200
3	COM10	Ch.2(1[0])	57,600
4	COM11	Ch.3(1[0])	57,600
5	COM12	Ch.4(1[0])	57,600

Port Setting

COM Port: COM12  
Serial Channel: CH 4(Idx: 1[0])  
Baudrate: 57,600  
Data Bits: 8 Bit  
Stop Bits: 1 Bit  
Parity: None  
Serial Mode: RS-485

Mapping Modify Remove

Serial\_Daemon (v1.1.1.3)

Auto Save  Alias Mode

Port Mapping

Num	COM Port	Channel	Baudrate
1	COM 5	Ch.0(5[0])	115,200
2	COM 6	Ch.1(5[0])	115,200
3	COM10	Ch.2(5[0])	57,600
4	COM11	Ch.3(5[0])	57,600

Port Setting

COM Port: COM12  
Serial Channel: CH 4(Addr: 5[0])  
Baudrate: 57,600  
Data Bits: 8 Bit  
Stop Bits: 1 Bit  
Parity: None  
Serial Mode: RS-485

Mapping Modify Remove

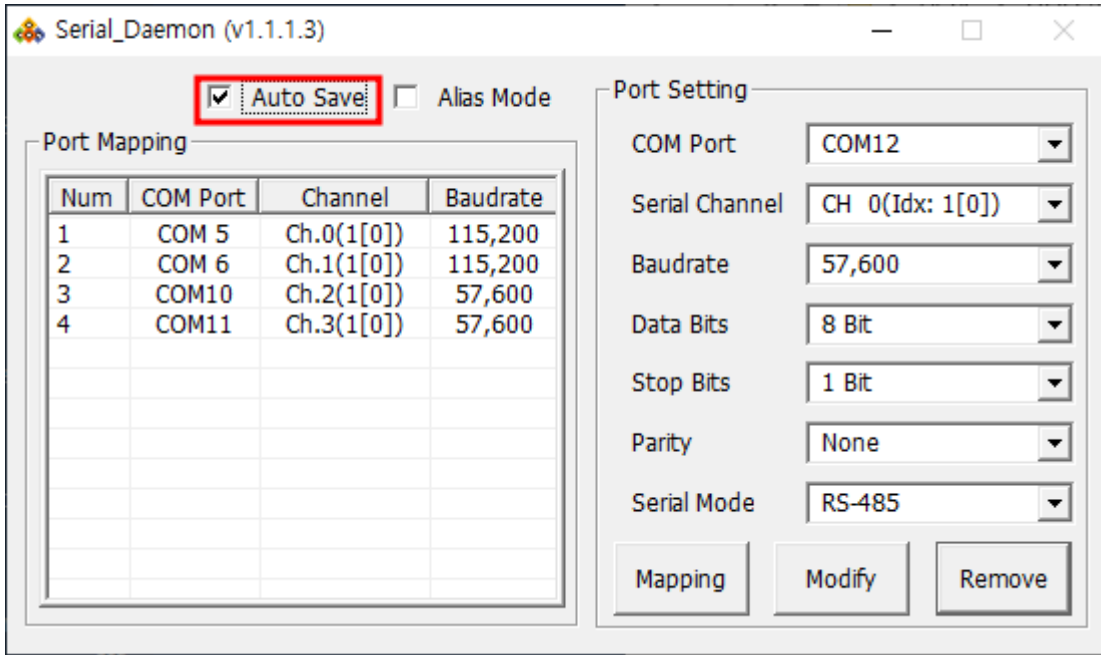
- Mapping **Remove**

### Mapping

Serial\_Daemon

매핑 정보를 저장 하시겠습니까?

예(Y) 아니요(N)



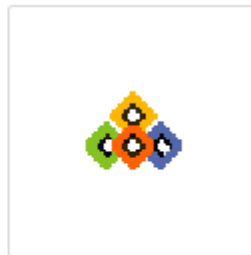
- Mapping
- Mapping
- Info.INI
- - **Auto Save**



Info.ini



LXUARTCON.dll



Serial\_Daemon.exe

Serial\_Daemon (v1.1.1.3)

Auto Save  Alias Mode

Port Mapping

Num	COM Port	Channel	Baudrate
1	COM 5	Ch.0(1[0])	115,200
2	COM 6	Ch.1(1[0])	115,200
3	COM10	Ch.2(1[0])	57,600
4	COM11	Ch.3(1[0])	57,600

Port Setting

COM Port: COM 5

Serial Channel: CH 0(Idx: 1[0])

Baudrate: 115,200

Data Bits: 8 Bit

Stop Bits: 1 Bit

Parity: None

Serial Mode: RS-232/422

Mapping Modify Remove

• Info.ini Mapping 가 Mapping 가

## Serial

ComMaster - Test Program for Serial Port

File Edit View Capture Help

[ Received Data ]

Com Port Setting

Baudrate 115200

Data Bits 8

Stop Bits 1

Parity None

Device COM5

RTS  DTR

Clear Rx Format HEX Open Com Close Com

[ Send Data ]

Format	Send
HEX	Send
HEX	Send
HEX	Send
HEX	Send
HEX	Send
HEX	Send
HEX	Send

Send Counter 1 / 1 Interval 0 ms  Add CR/LF

Ready CAP

• Serial Daemon Mapping Windows Serial EtherCAT  
Slave 가 가 .

1)

ETS-SC08A

From: <https://www.comizoa.com/info/> - -

Permanent link: [https://www.comizoa.com/info/doku.php?id=faq:downloadandsetup:serialdaemon:00\\_setup&rev=1677739283](https://www.comizoa.com/info/doku.php?id=faq:downloadandsetup:serialdaemon:00_setup&rev=1677739283)

Last update: 2024/07/08 18:22