

- 1. Comizoa Serial Daemon** ..... 1
- 2.     **Setup** ..... 1
  - 가     ..... 1
    - EtherCAT Master Configuration ..... 1
    - Serial Daemon Licence Key ..... 2
- 3.     ..... 2
  - COM Port ..... 2
    - Serial Channel ..... 3
      - ..... 5
    - Mapping ..... 6
    - Mapping ..... 6
    - Mapping ..... 7
    - Serial ..... 9

# Comizoa Serial Daemon

× Comizoa Serial Daemon

× Serial Daemon

Comizoa EtherCAT

가

가

## 1. Comizoa Serial Daemon

Serial\_Daemon (v1.1.1.3)

Auto Save  Alias Mode

Port Mapping

Num	COM Port	Channel	Baudrate
1	COM 5	Ch.0(1[0])	115,200
2	COM 6	Ch.1(1[0])	115,200
3	COM10	Ch.2(1[0])	57,600
4	COM11	Ch.3(1[0])	57,600

Port Setting

COM Port: COM 5

Serial Channel: CH 0(Idx: 1[0])

Baudrate: 115,200

Data Bits: 8 Bit

Stop Bits: 1 Bit

Parity: None

Serial Mode: RS-232/422

Buttons: Mapping, Modify, Remove

- Serial Daemon [1\) PDO,SDO](#) 가

Windows 가

## 2. Setup

가

- 가

**EtherCAT Master Configuration**

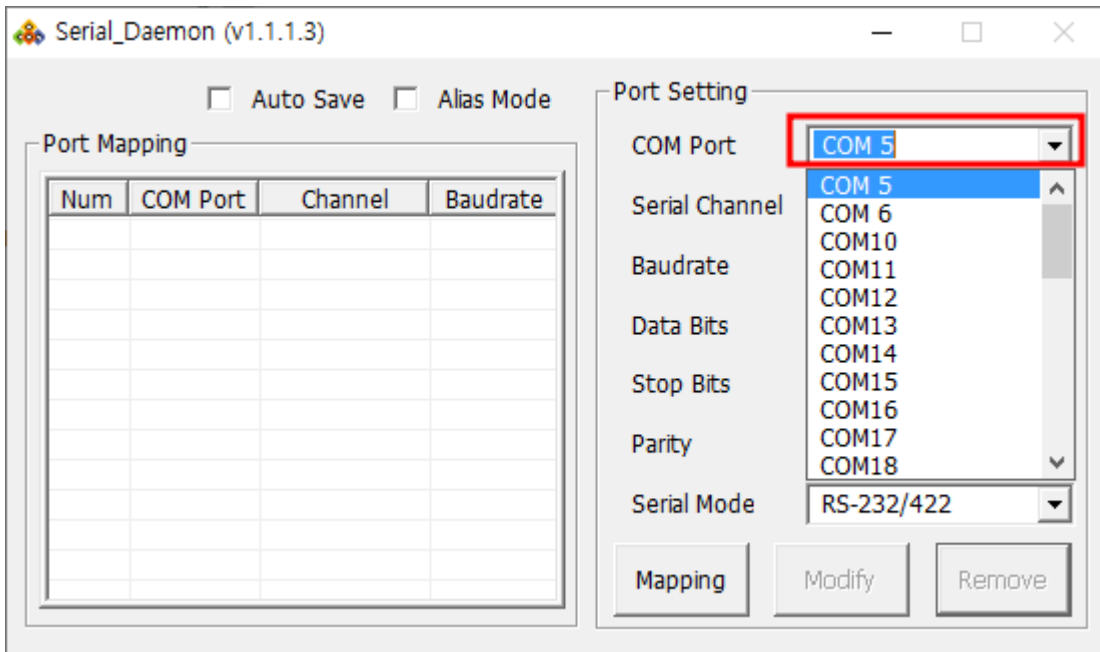
- PCI

### Serial Daemon Licence Key

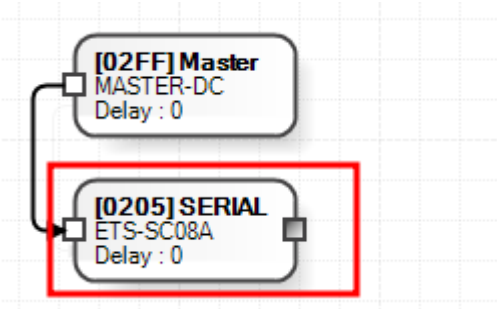
- Serial Daemon Comizoa 가 .
- Serial Daemon

3.

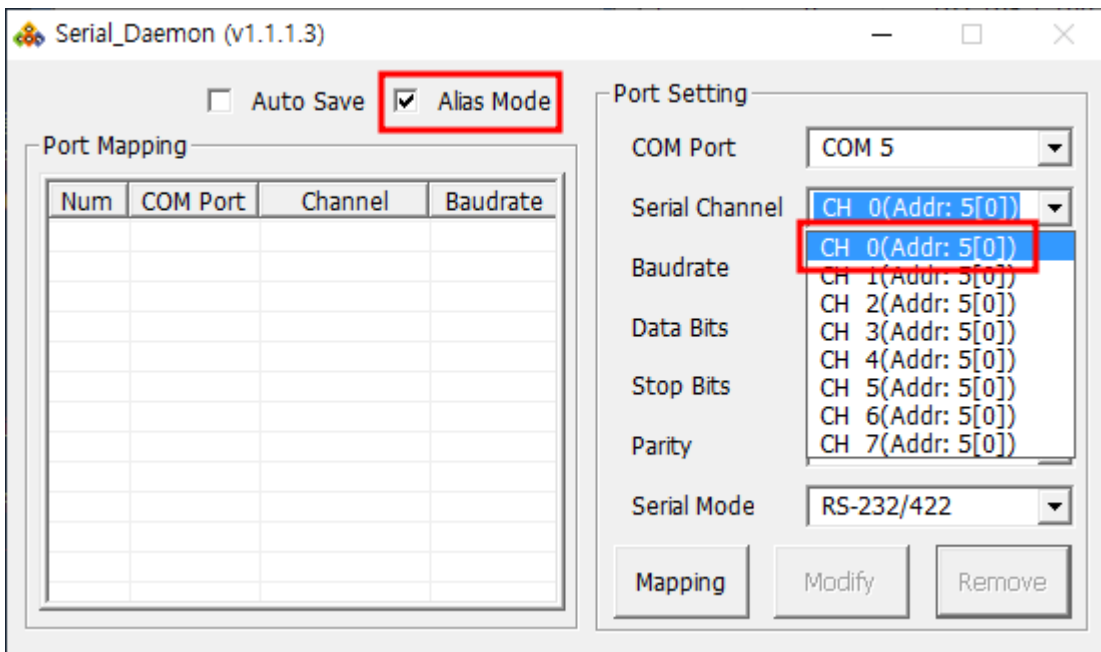
### COM Port







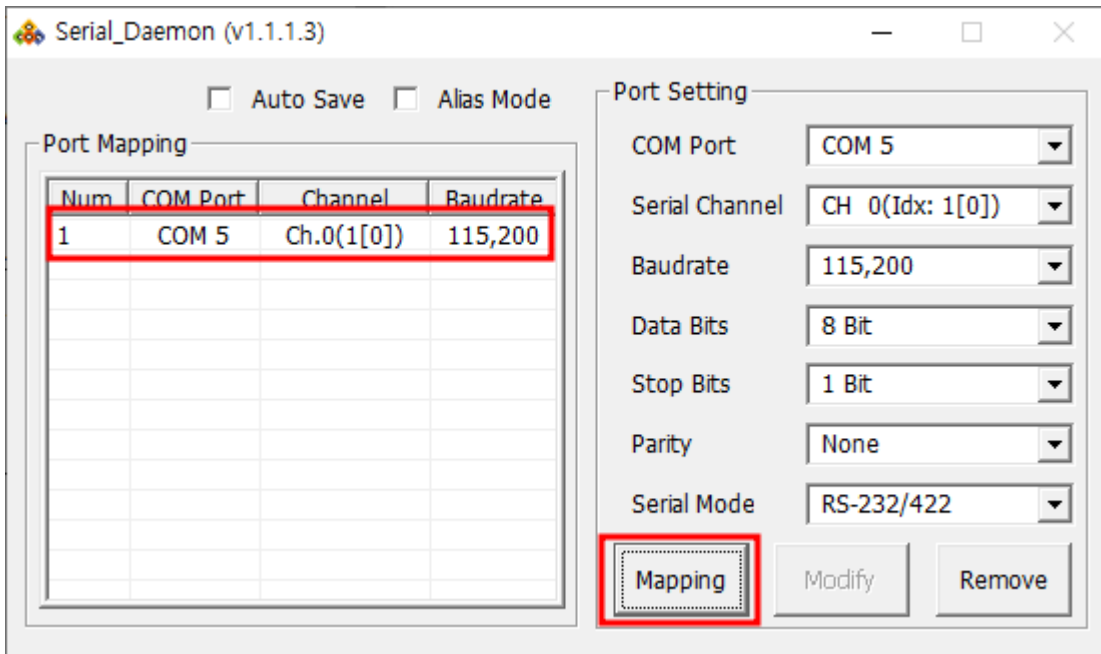
- ComboBox Mapping
- Serial Channel
- { } (idx: { } [ { } ] )
- 1 0







### Mapping



Mapping

Mapping

### Mapping

Serial\_Daemon (v1.1.1.3)

Auto Save  Alias Mode

Port Mapping

Num	COM Port	Channel	Baudrate
1	COM 5	Ch.0(1[0])	115,200
2	COM 6	Ch.1(1[0])	115,200
3	COM10	Ch.2(1[0])	57,600
4	COM11	Ch.3(1[0])	57,600
5	COM12	Ch.4(1[0])	57,600

Port Setting

COM Port: COM12  
Serial Channel: CH 4(Idx: 1[0])  
Baudrate: 57,600  
Data Bits: 8 Bit  
Stop Bits: 1 Bit  
Parity: None  
Serial Mode: RS-485

Mapping Modify Remove

Serial\_Daemon (v1.1.1.3)

Auto Save  Alias Mode

Port Mapping

Num	COM Port	Channel	Baudrate
1	COM 5	Ch.0(5[0])	115,200
2	COM 6	Ch.1(5[0])	115,200
3	COM10	Ch.2(5[0])	57,600
4	COM11	Ch.3(5[0])	57,600

Port Setting

COM Port: COM12  
Serial Channel: CH 4(Addr: 5[0])  
Baudrate: 57,600  
Data Bits: 8 Bit  
Stop Bits: 1 Bit  
Parity: None  
Serial Mode: RS-485

Mapping Modify Remove

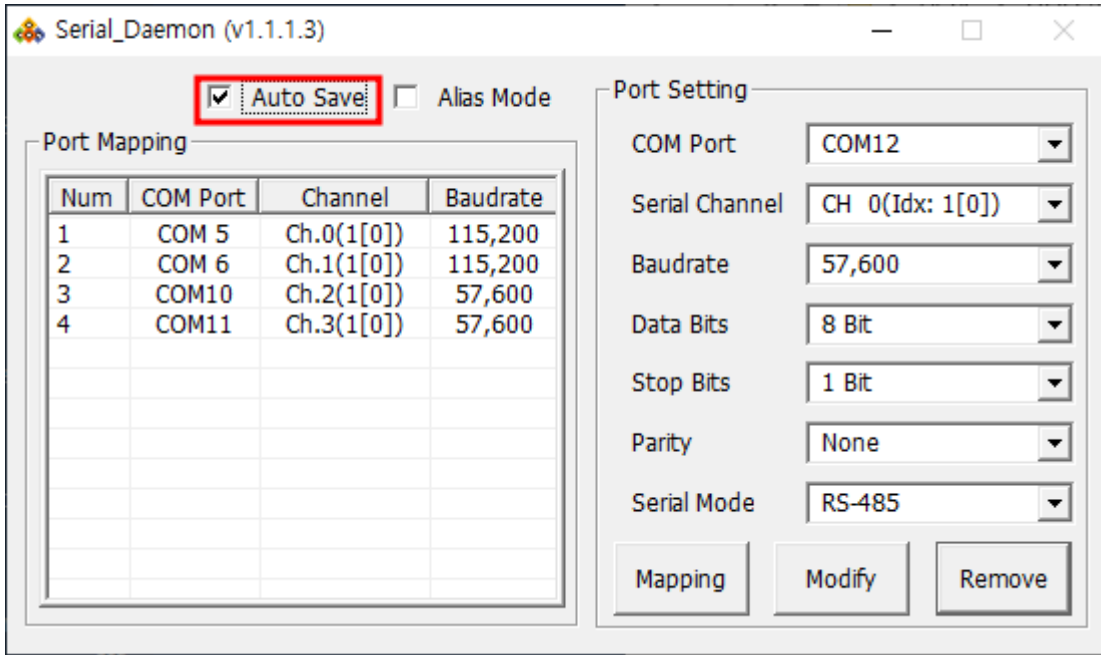
- Mapping **Remove**

### Mapping

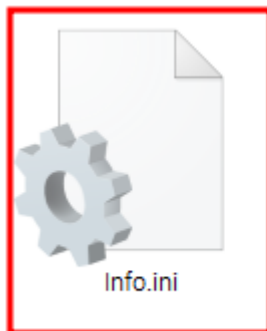
Serial\_Daemon

매핑 정보를 저장 하시겠습니까?

예(Y) 아니요(N)



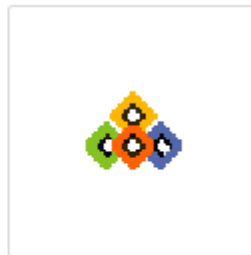
- Mapping
- Mapping
- Info.INI
- - **Auto Save**



Info.ini



LXUARTCON.dll



Serial\_Daemon.exe

The screenshot shows the Serial\_Daemon (v1.1.1.3) application window. At the top, there are checkboxes for 'Auto Save' and 'Alias Mode'. The interface is divided into two main sections: 'Port Mapping' and 'Port Setting'.

**Port Mapping:** A table with 4 columns: Num, COM Port, Channel, and Baudrate. It contains 4 rows of data.

Num	COM Port	Channel	Baudrate
1	COM 5	Ch.0(1[0])	115,200
2	COM 6	Ch.1(1[0])	115,200
3	COM10	Ch.2(1[0])	57,600
4	COM11	Ch.3(1[0])	57,600

**Port Setting:** A panel with several dropdown menus and buttons. The settings are: COM Port (COM 5), Serial Channel (CH 0(Idx: 1[0])), Baudrate (115,200), Data Bits (8 Bit), Stop Bits (1 Bit), Parity (None), and Serial Mode (RS-232/422). Below these are three buttons: 'Mapping', 'Modify', and 'Remove'.

• Info.ini Mapping 가

Mapping 가

## Serial

**ComMaster - Test Program for Serial Port**

File Edit View Capture Help

[ Received Data ]

-----10-----20-----30-----40-----50

**Com Port Setting**

Baudrate: 115200  
 Data Bits: 8  
 Stop Bits: 1  
 Parity: None  
 Device: COM5  
 RTS  DTR

Clear Rx Format: HEX Open Com Close Com

[ Send Data ]

Format	Send
HEX	Send
HEX	Send
HEX	Send
HEX	Send
HEX	Send
HEX	Send
HEX	Send

Send Counter: 1 / 1 Interval: 0 ms  Add CR/LF

Ready CAP

• Serial Daemon Mapping Windows Serial EtherCAT  
 Slave 가 가 .

1)

ETS-SC08A

From: <https://www.comizoa.com/info/> - -

Permanent link: [https://www.comizoa.com/info/doku.php?id=faq:downloadandsetup:serialdaemon:00\\_setup&rev=1677739311](https://www.comizoa.com/info/doku.php?id=faq:downloadandsetup:serialdaemon:00_setup&rev=1677739311)

Last update: 2024/07/08 18:22