

..... 1

**1. Configurator Download Dictionary** ..... 1

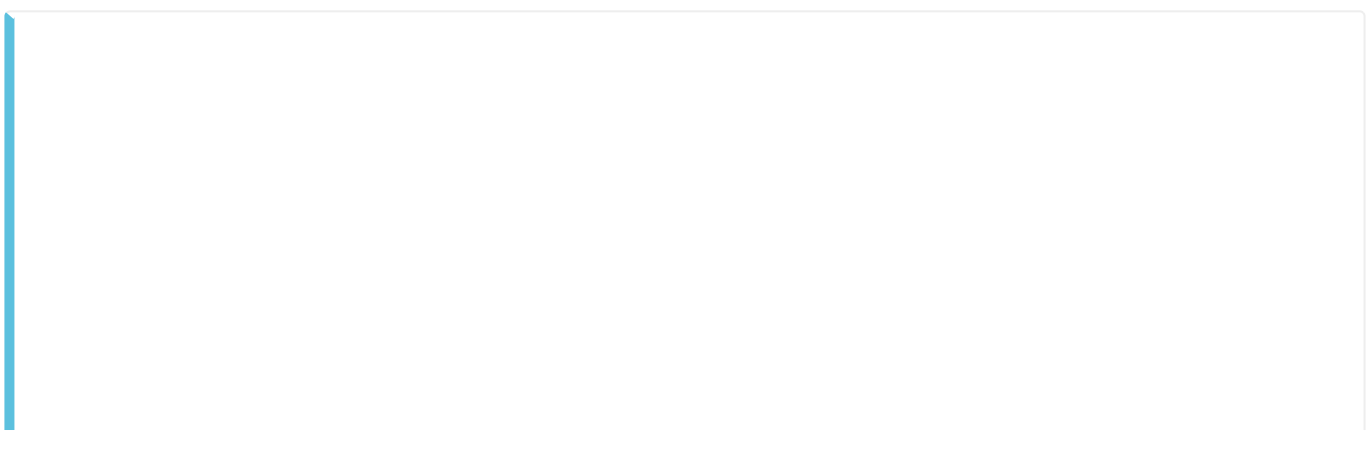
**2. SDO Torque Limit** ..... 1

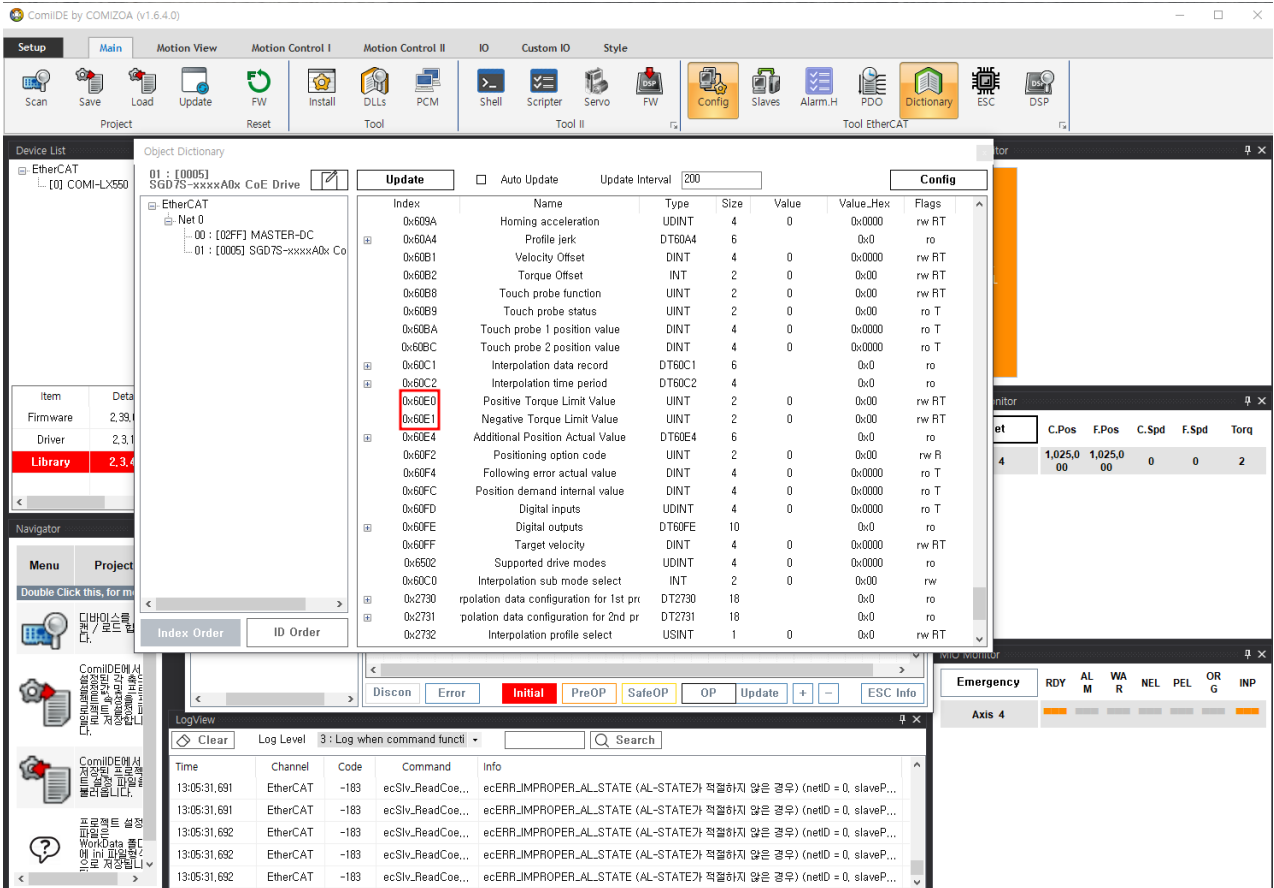
× (Torque Limit)

# 1. Configurator Download Dictionary

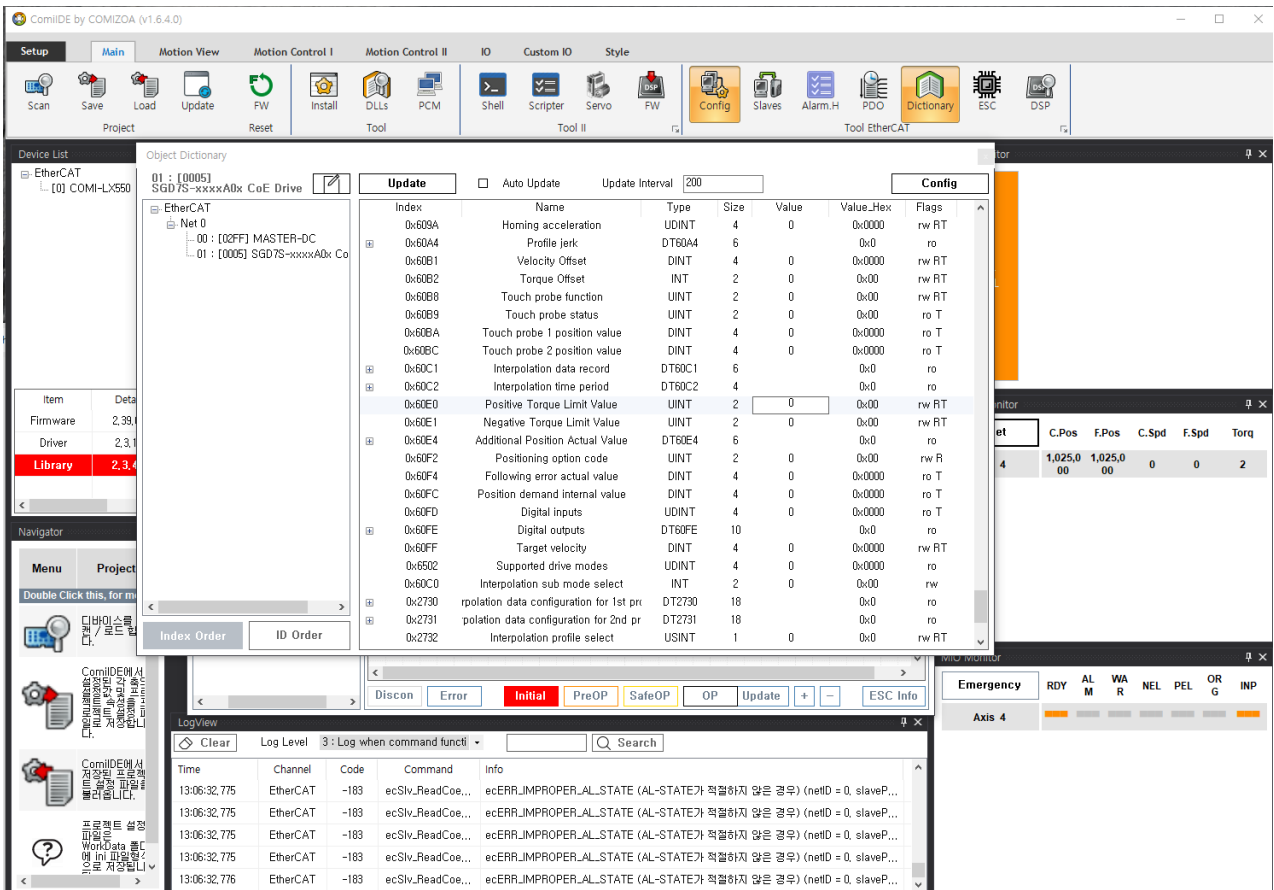
The screenshot shows the ComiIDE (v1.6.4.0) interface. The 'Configurator' window is active, displaying a 'Scanned List' with two slave devices: #00 [02FFh] MASTER-DC and #01 [0005h] SGD7S-xxxxA0x CoE. The 'Dictionary' button in the top toolbar is highlighted with a red box. The 'LogView' window at the bottom shows a series of error logs for EtherCAT channel -183, all with the command 'ecSlv\_ReadCoe...' and the error code 'ecERR\_IMPROPER\_AL\_STATE (AL-STATE가 적절하지 않은 경우) (netID = 0, slaveP...'. Below the screenshot, a navigation path is provided: '• Config→ Download Main Dictionary'.

# 2. SDO Torque Limit

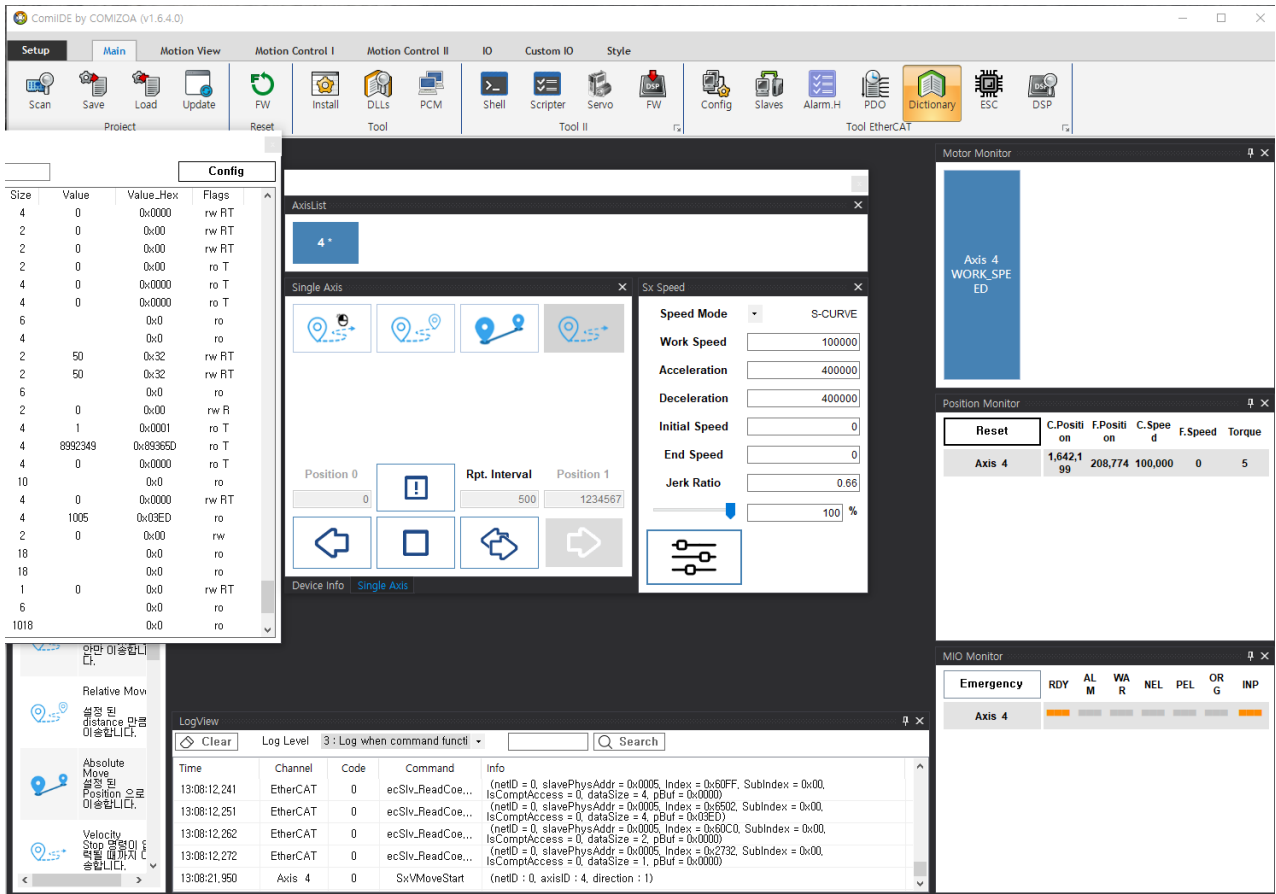




- SDO Torque Limit



1. Value .
2. Value enter.



가 Limit

\* Torque Limit

. (Ex: Torque Limit = Maximum Current)

From:

<https://www.comizoa.com/info/> - -

Permanent link:

[https://www.comizoa.com/info/doku.php?id=faq:motion:ethernet:07\\_torque\\_limit\\_setup&rev=1659500723](https://www.comizoa.com/info/doku.php?id=faq:motion:ethernet:07_torque_limit_setup&rev=1659500723)

Last update: 2024/07/08 18:22