

SercureBoot 1

SercureBoot 1 : Windows PowerShell 1

SercureBoot 2 : CMD 2

SercureBoot : AMI BIOS 3

SercureBoot : MainBoard 6

SecureBoot

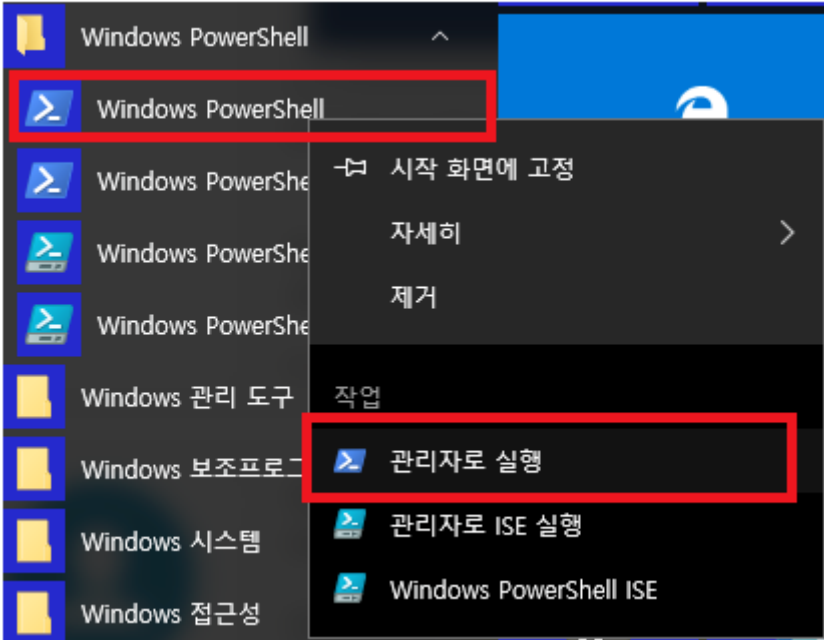
x SecureBoot

SecureBoot

- SecureBoot , OS
- SecureBoot가 Enable 가 가

SecureBoot 1 : Windows PowerShell

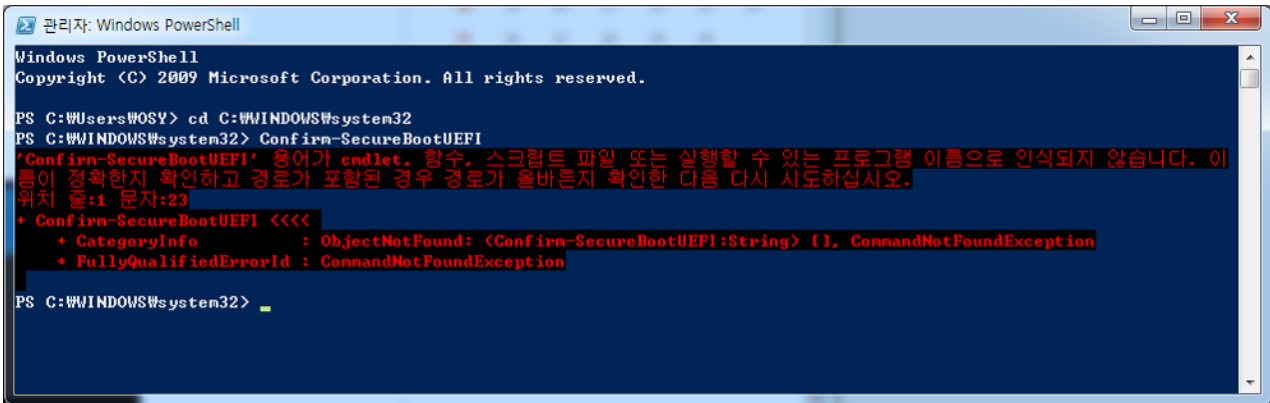
- Windows PowerShell



- 가 system32가 system32
- Confirm-SecureBootUEFI

```
cd C:\WINDOWS\system32
```

Confirm-SecureBootUEFI

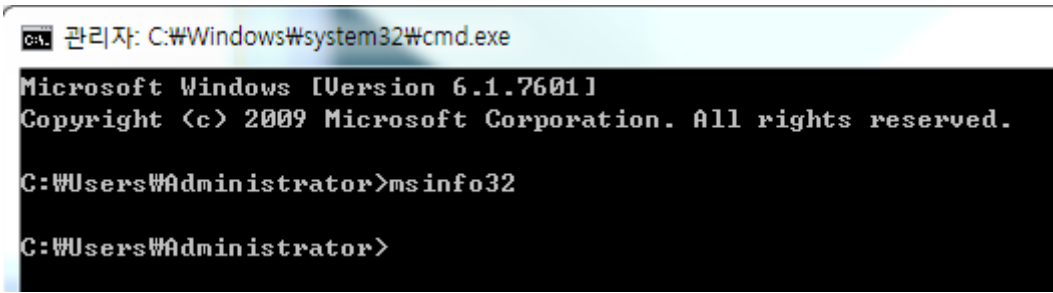


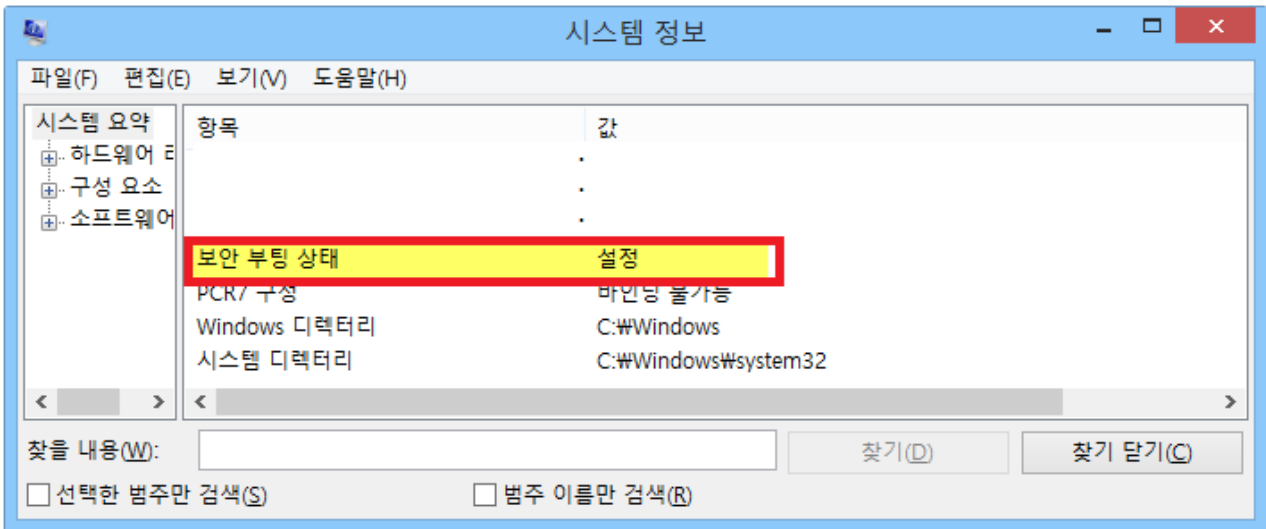
- 가 BIOS가 UEFI
SecureBoot True False .

UEFI / Secure Boot Enable : True
 UEFI / Secure Boot Enable : False

SercureBoot 2 : CMD

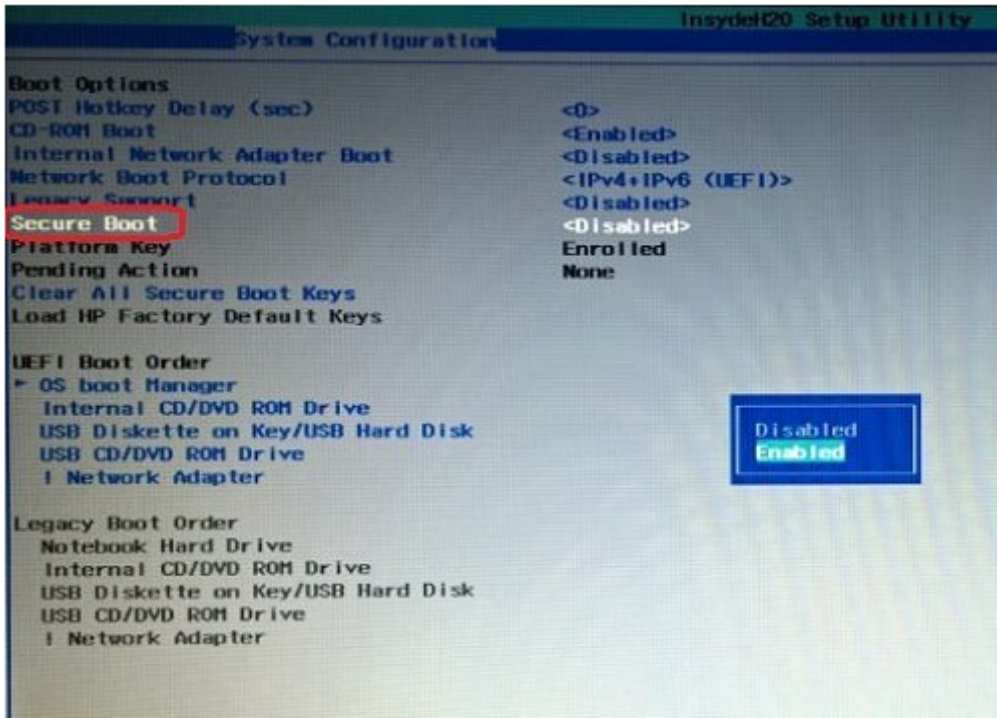
- CMD msinfo32
 ○ , system32



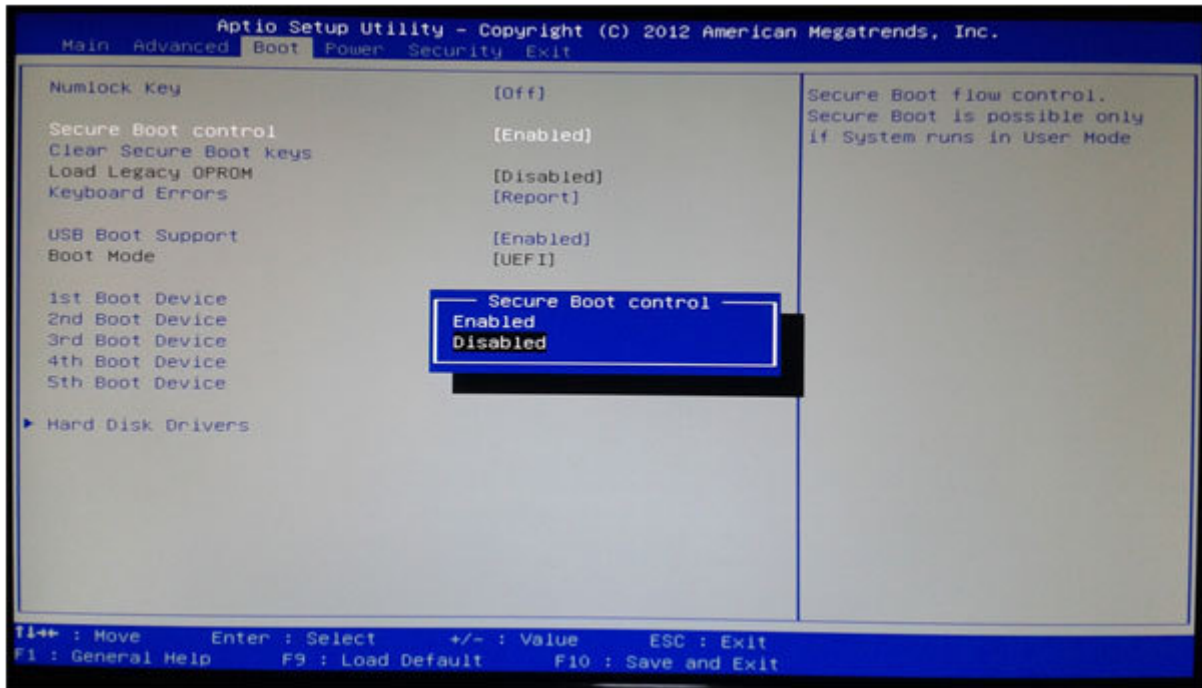


SercureBoot : AMI BIOS

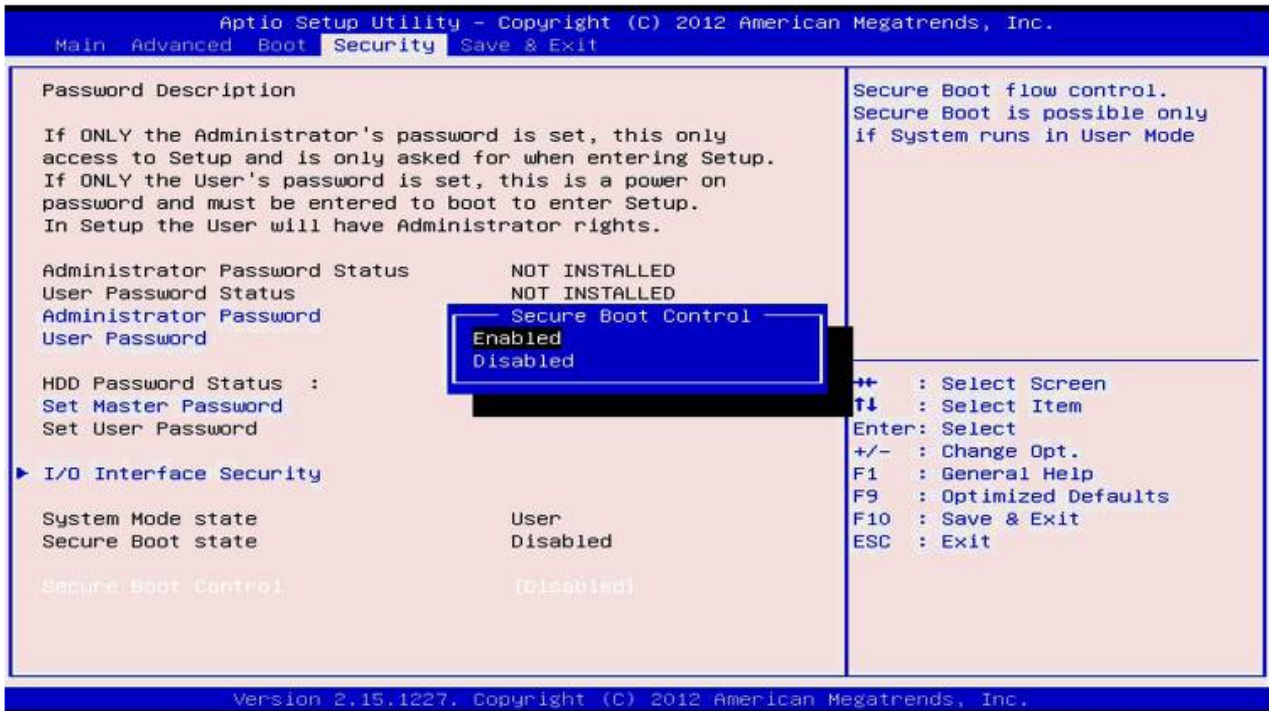
- Case 1



• case 2



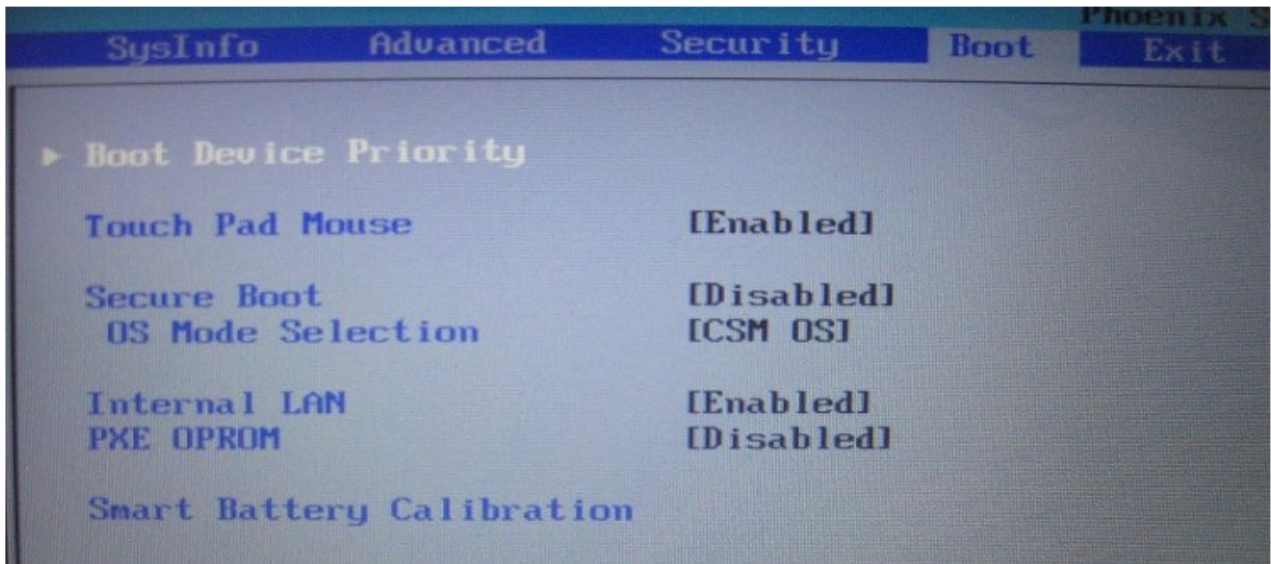
• case 3



- case 4

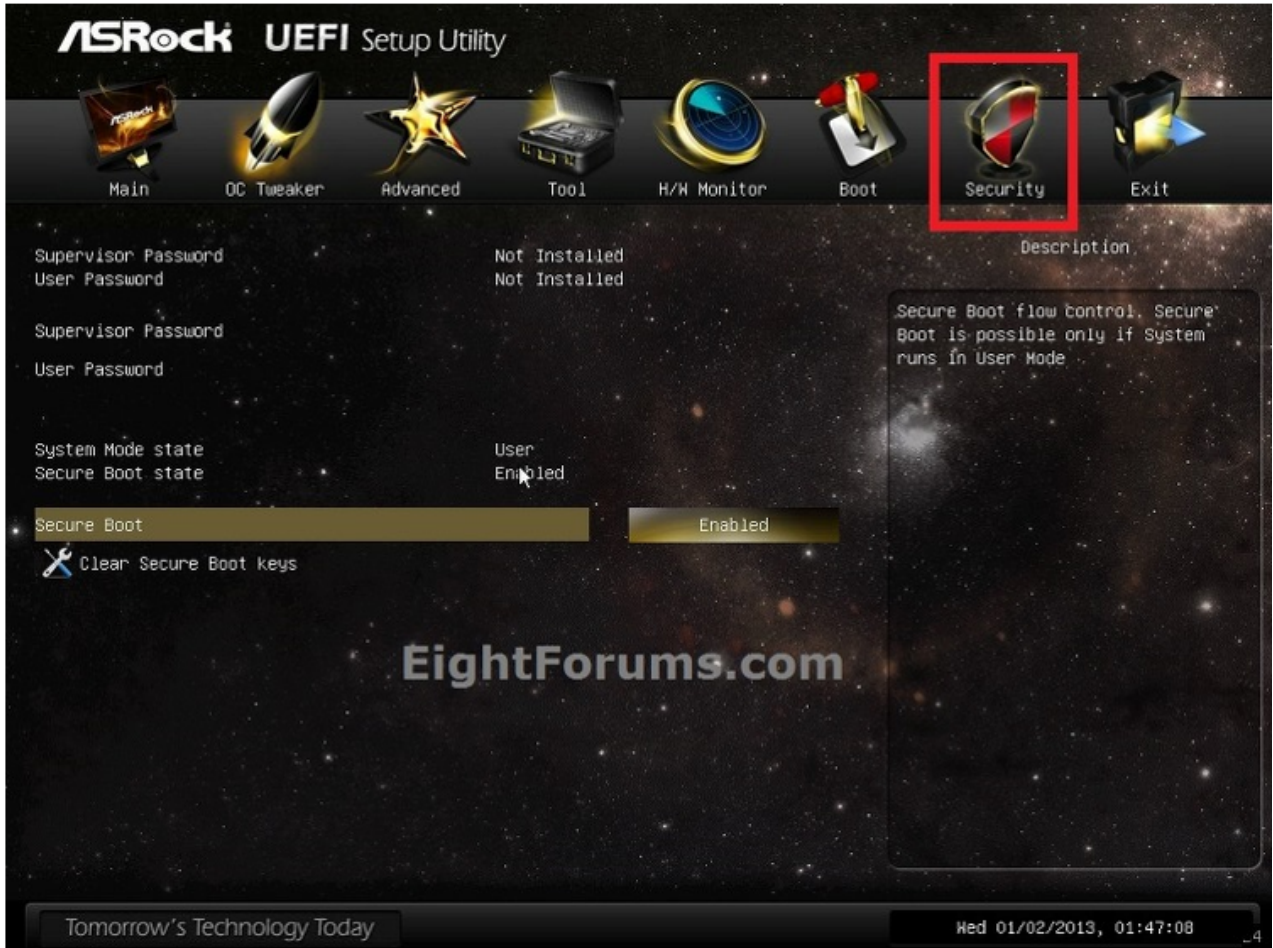


- case 5

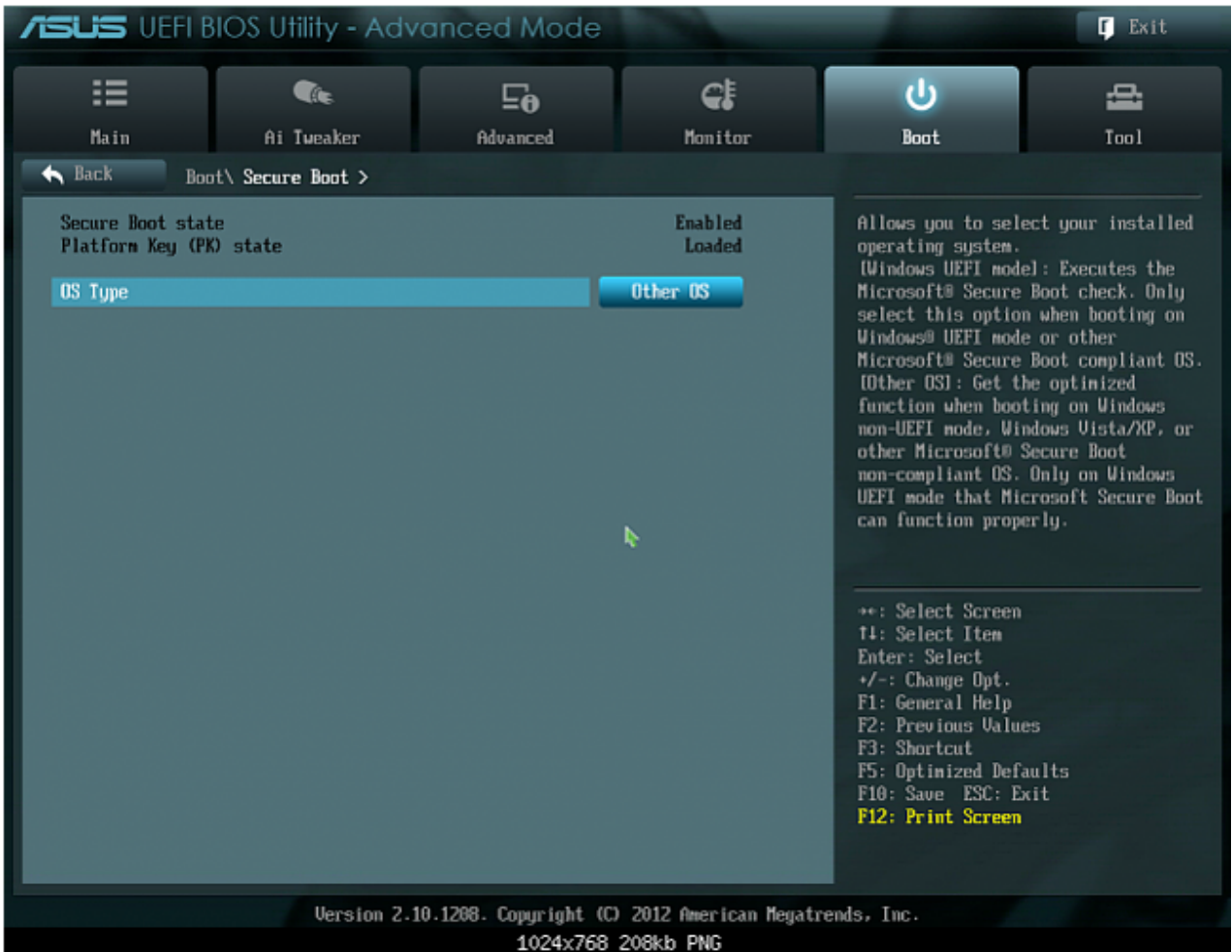


SercureBoot : MainBoard

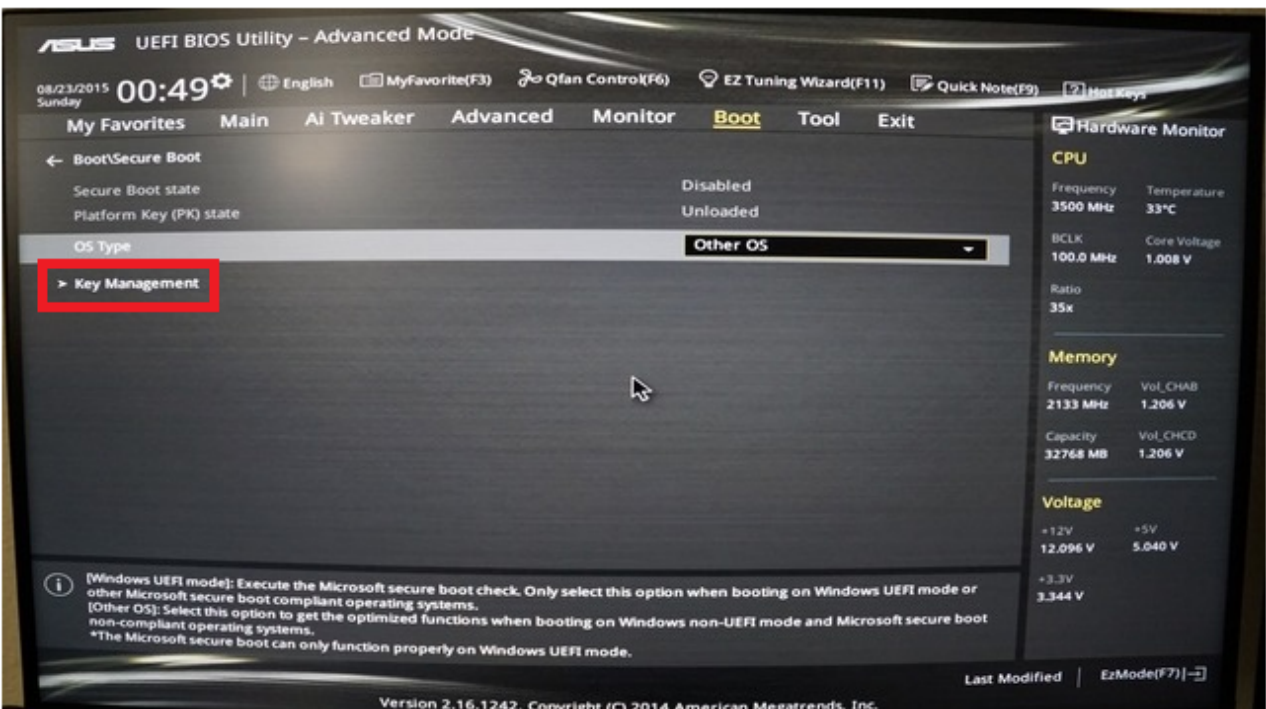
- Asrock



- Asus



- OS Type Other OS



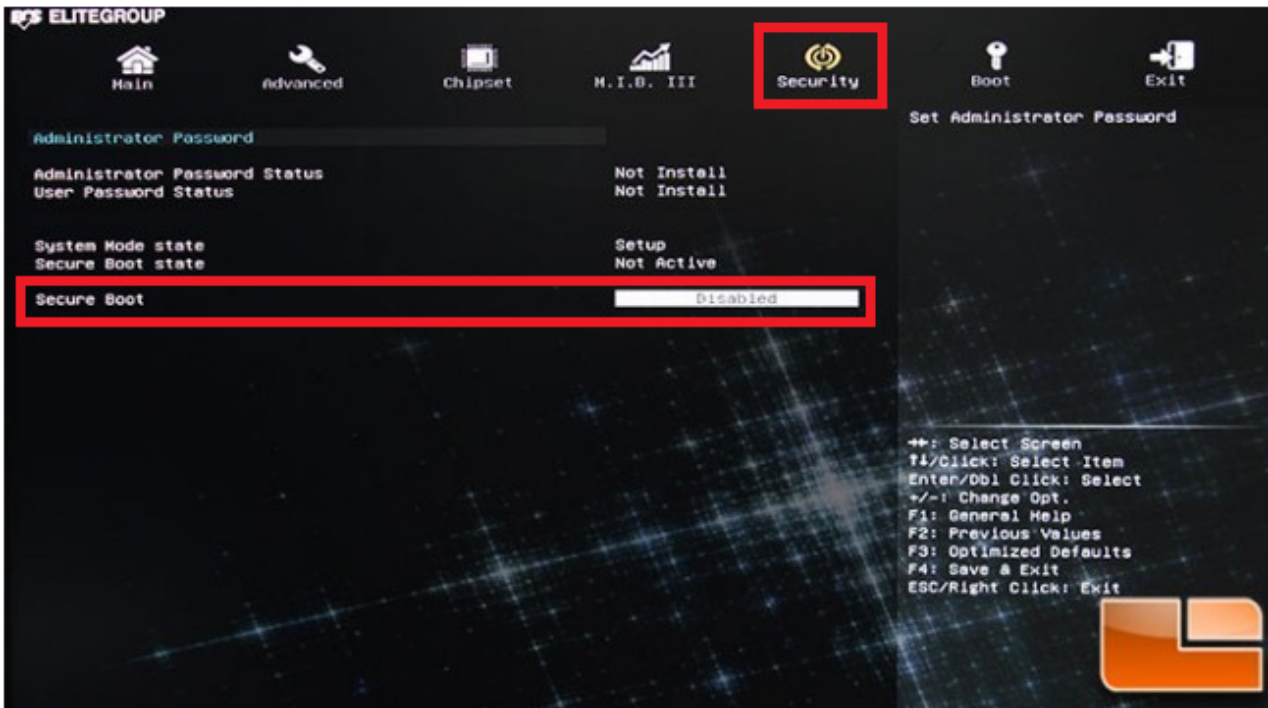


- Key Management가 Secure Boot

- GIGABYTE



• ECS



• MSI

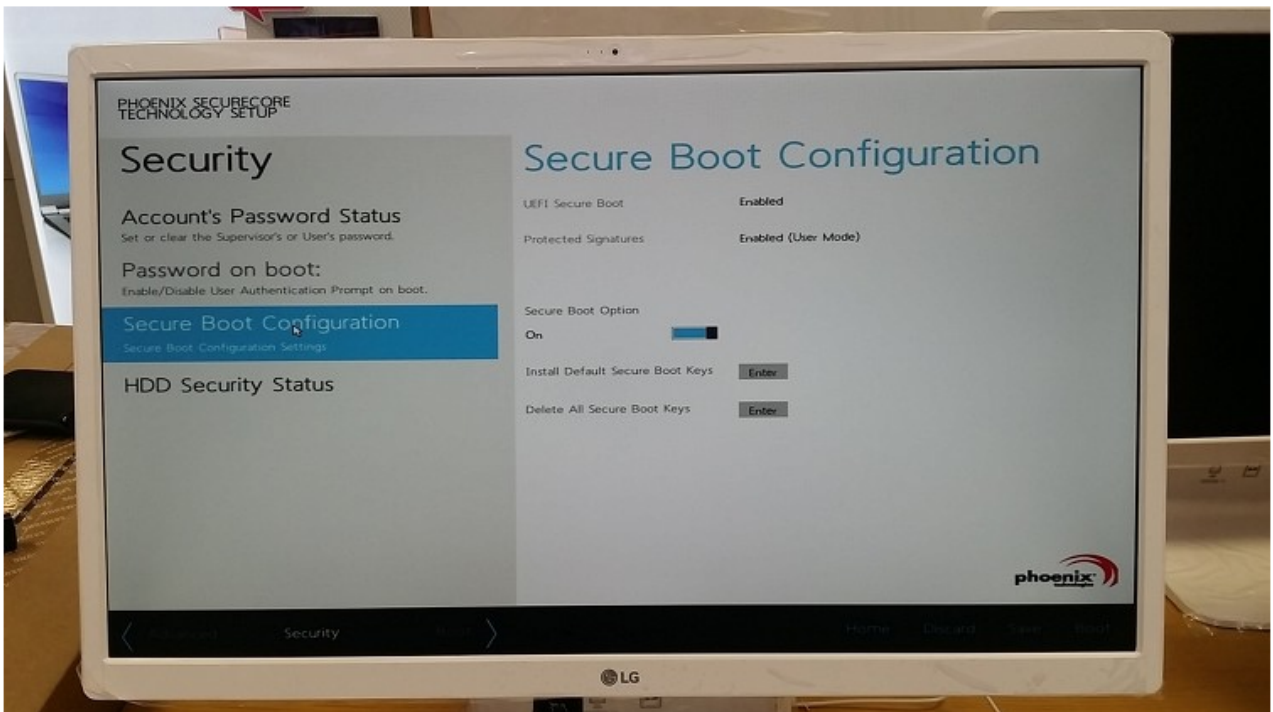


Settings ≡ Advanced ≡ Windows8/8.1 Configuration ≡ Secure Boot 에 있는 것 같다.

• SAMSUNG



- LG



From:

<https://www.comizoa.com/info/> - -

Permanent link:

<https://www.comizoa.com/info/doku.php?id=platform:common:support:secureboot&rev=1544500094>

Last update: **2024/07/08 18:22**