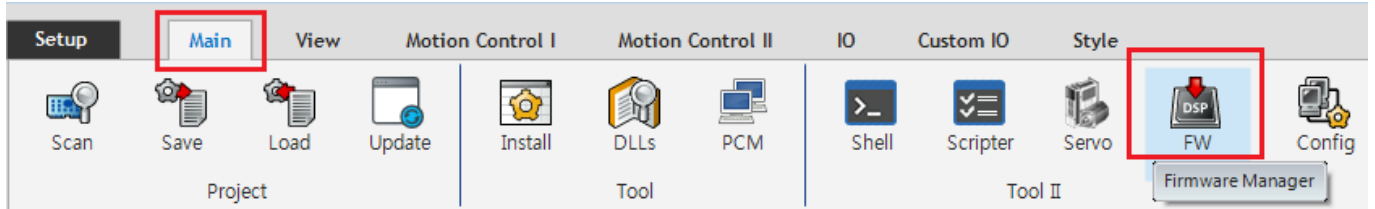


FW Update

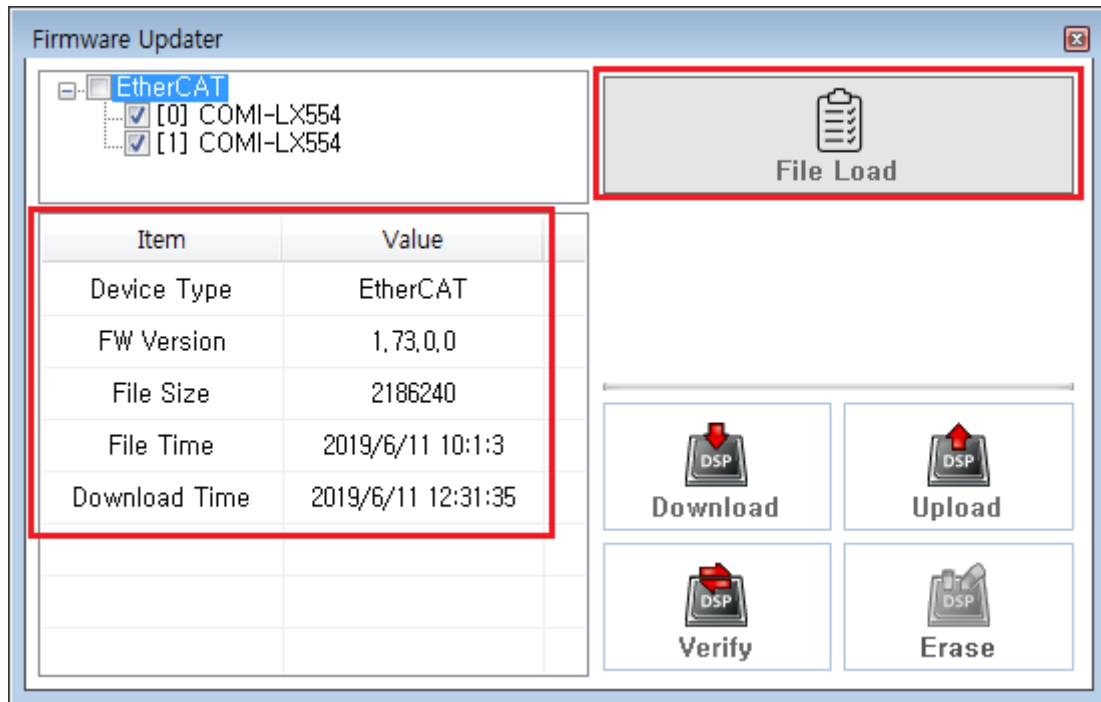
x

1 FW Firmware Manager

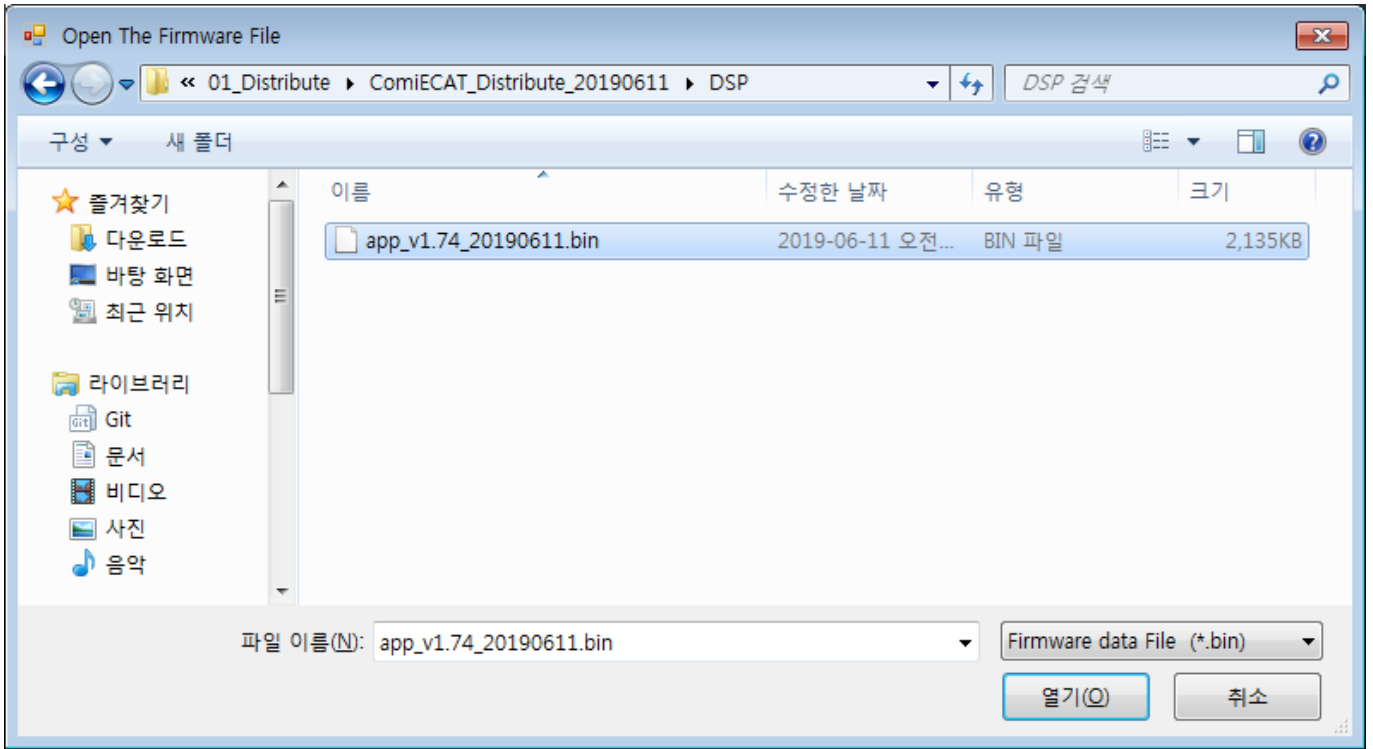


2 FW

- Device Tree Device Device FW



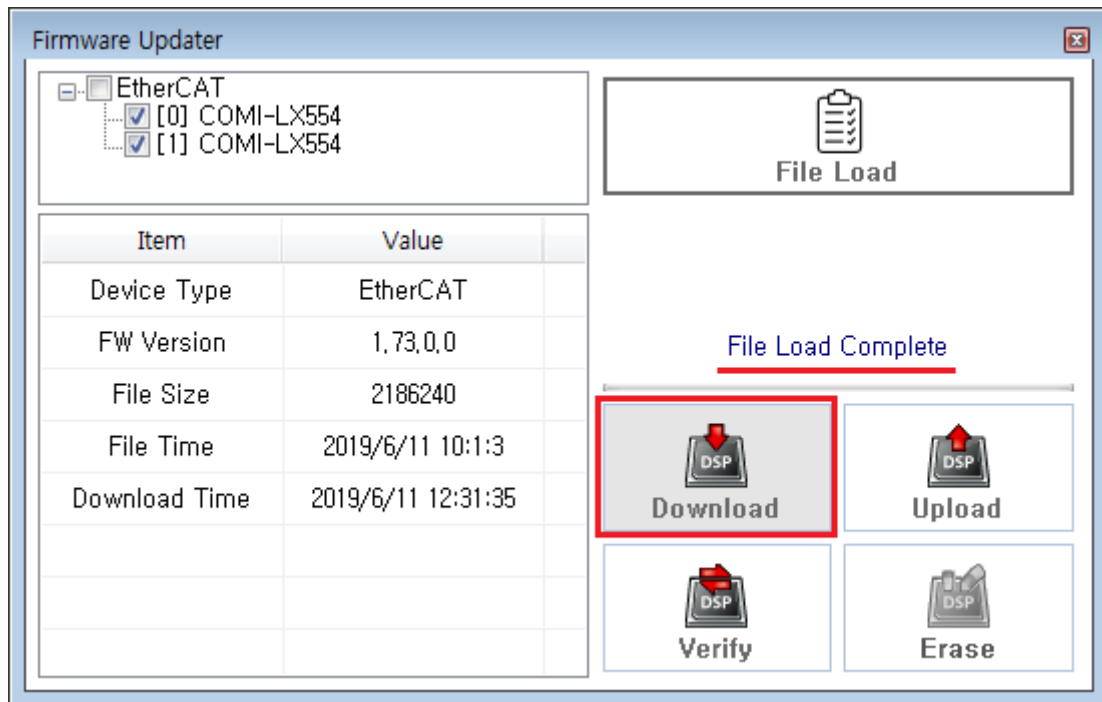
3 File Load Firmware File



4 "File Load Complete"

Download

Download



The screenshot shows the 'Firmware Updater' window. On the left, a tree view shows 'EtherCAT' expanded with two sub-items, '[0] COMI-LX554' and '[1] COMI-LX554', both checked. Below this is a table with the following data:

Item	Value
Device Type	EtherCAT
FW Version	1.73.0.0
File Size	2186240
File Time	2019/4/26 12:10:10
Download Time	2019/6/11 12:24:4

On the right side, there is a 'File Load' button with a clipboard icon. Below it, the progress status is shown as '2 / 2 (Downloading : 37) %' with '(851712 / 2186240)' below that. A green progress bar is partially filled. At the bottom right, there are four buttons: 'Download', 'Upload', 'Verify', and 'Erase', each with a 'DSP' icon and a red arrow.

5 "Download Complete"

This screenshot shows the 'Firmware Updater' window after the download is complete. The tree view and table on the left are identical to the previous screenshot. The progress status now shows 'Download Complete' in blue text with a red underline. The progress bar is now fully filled. The 'Download' button is highlighted with a blue border. The other buttons ('Upload', 'Verify', 'Erase') remain the same.

x

From:
<https://www.comizoa.com/info/> - -

Permanent link:
https://www.comizoa.com/info/doku.php?id=platform:common:support:swupdate:00_fwupdate&rev=1575969237

Last update: **2024/07/08 18:22**