

..... 1

ESI Import ..... 2

Network ..... 2

Scan ..... 2

Master-DC ..... 3

Scan ..... 3

Download ..... 5

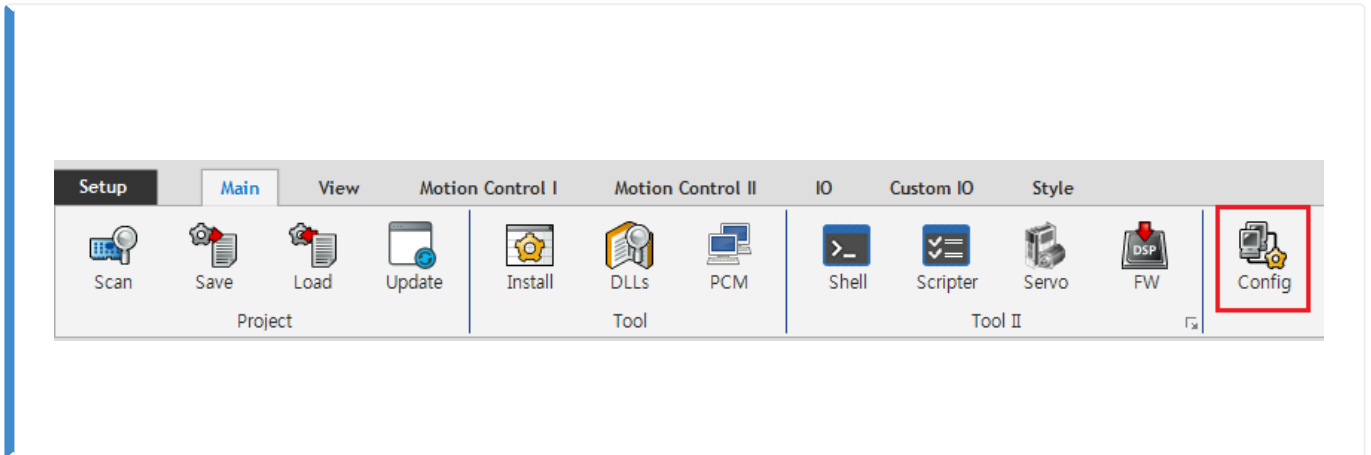
Configuration Check ..... 6

, Config, , ComiIDE, ComiEcatConfig

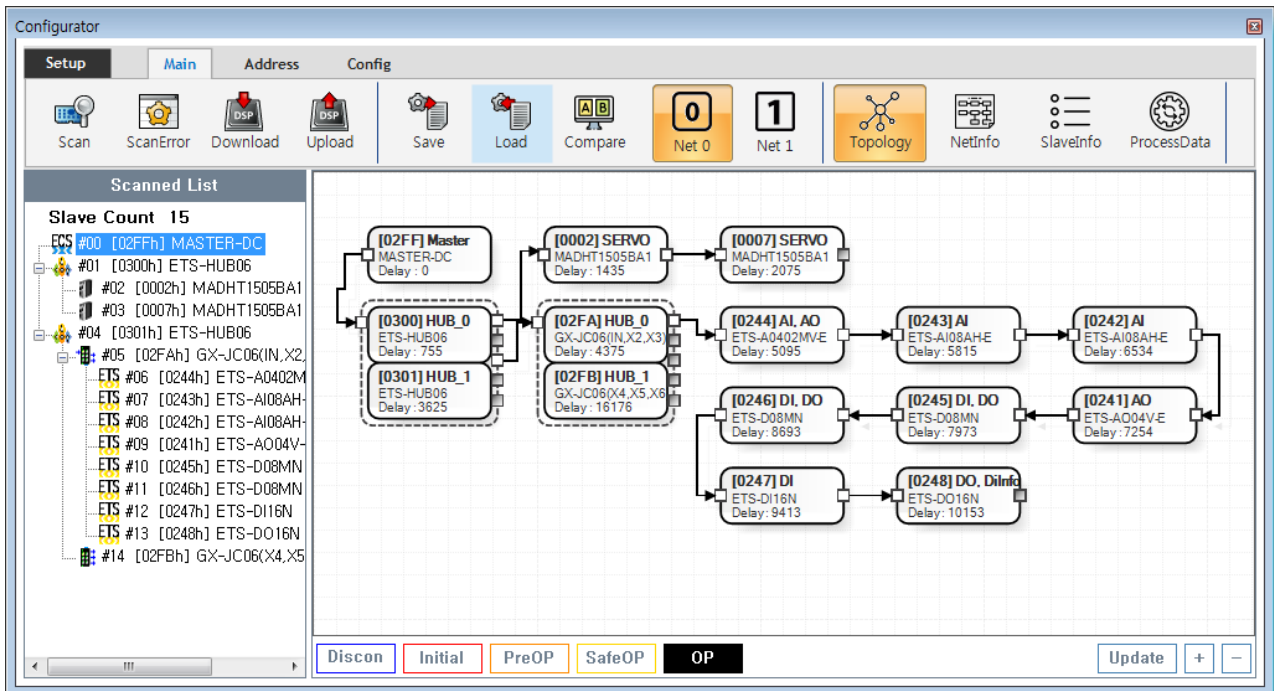
# Configuration :

× Configuration , Slave Configuration

× ComiIDE v1.4.0.0



• ComiIDE Main **Config**



• Config , EtherCAT Master가 Load

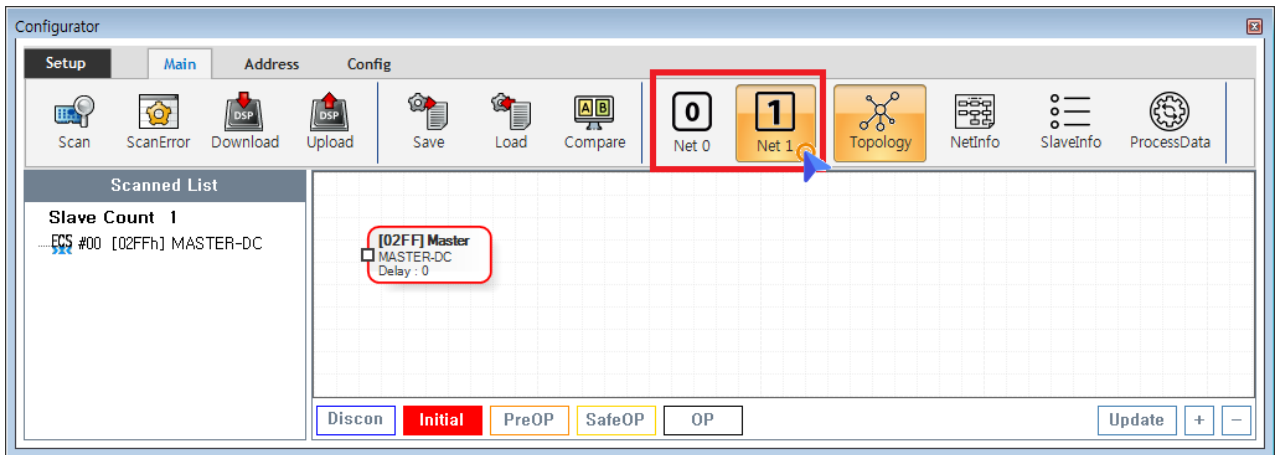
- **Device Load**
- **SW Version**

- Config 가 Update
- Config Scan - Edit - Download Configuration

### ESI Import

- Scan Slave Module ESI file
- ESI ./ComilDE/Data/Xml
- 가 / ESI Configurator

### Network

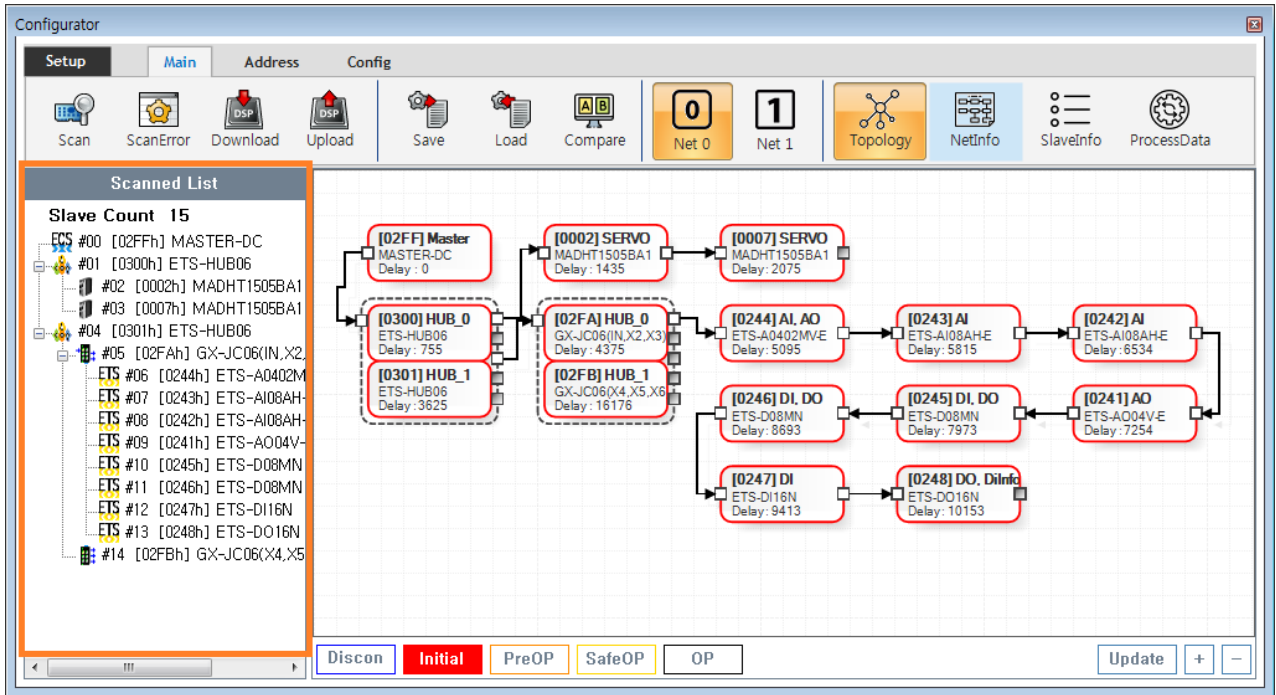


- COMI-LX550 ~ COMI-LX554 1 Network 가 , COMI-LX554 Network 가
- Network 가
  - **Net #** , Network
  - Configuration Network , Network Configuration

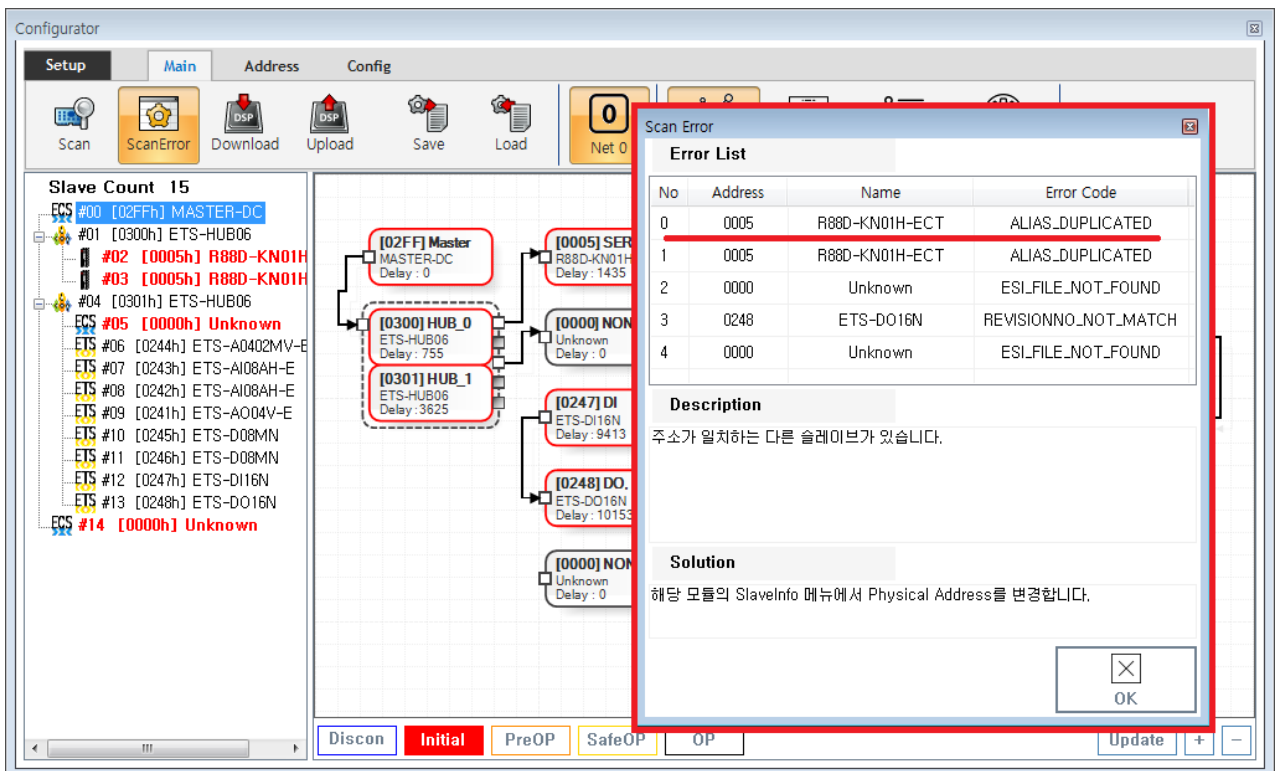
### Scan

- Scan EtherCAT Master Slave Module



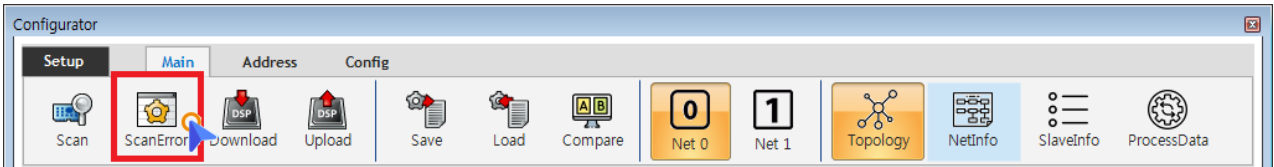


- Tree Slave가 , Slave



- 가 ScanError List

ErrorCode Scan Error 가



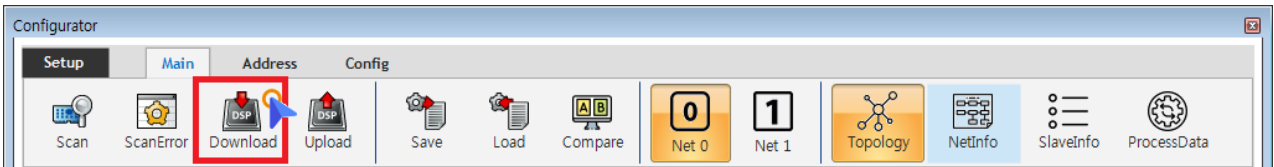
- Scan Error Main - **ScanError**  
ScanError List

× **Warning!**

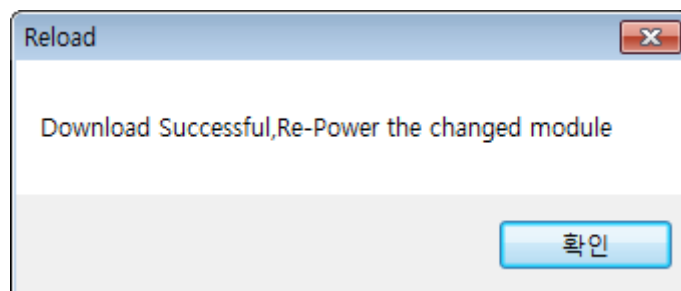
Scan Download

**Download**

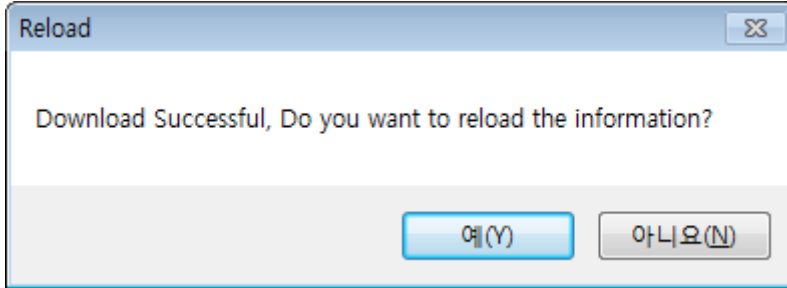
- DownLoad / Slave Master



- Main - **Download**
- Scan Error가 , Download ScanError
- ScanError가 Download 가 , AIStatus가



- EEPROM Data가 , Slave Module Address
  - Configuration Address
  - Slave Address가 ,



- ComiIDE
  - “ ”

### Configuration Check

- Configuration , Slave AI Status 가 OP
  - , AI Status
- Slave가 OP가 , OP

From: <https://www.comizoa.com/info/> - -

Permanent link: [https://www.comizoa.com/info/doku.php?id=platform:ethernet:1\\_setup:10\\_config:20\\_configuration&rev=1586756367](https://www.comizoa.com/info/doku.php?id=platform:ethernet:1_setup:10_config:20_configuration&rev=1586756367)

Last update: 2024/07/08 18:22