

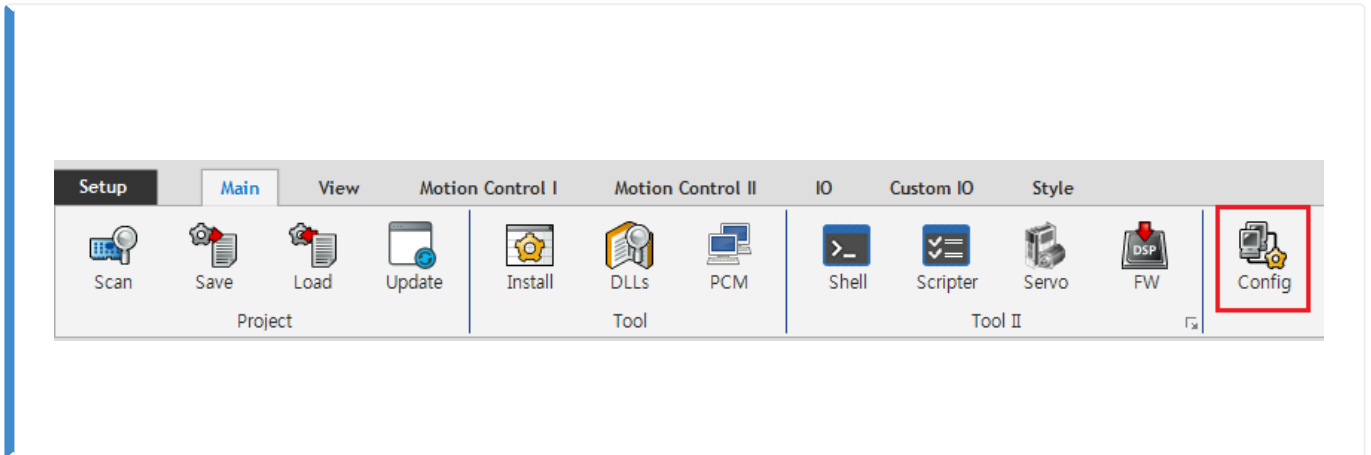
- 1
- ESI Import 2
- Network 2
- Scan 2
- Master-DC 3
- Scan 3
- Download 5
- Configuration Check 6

, Config, , ComiIDE, ComiEcatConfig

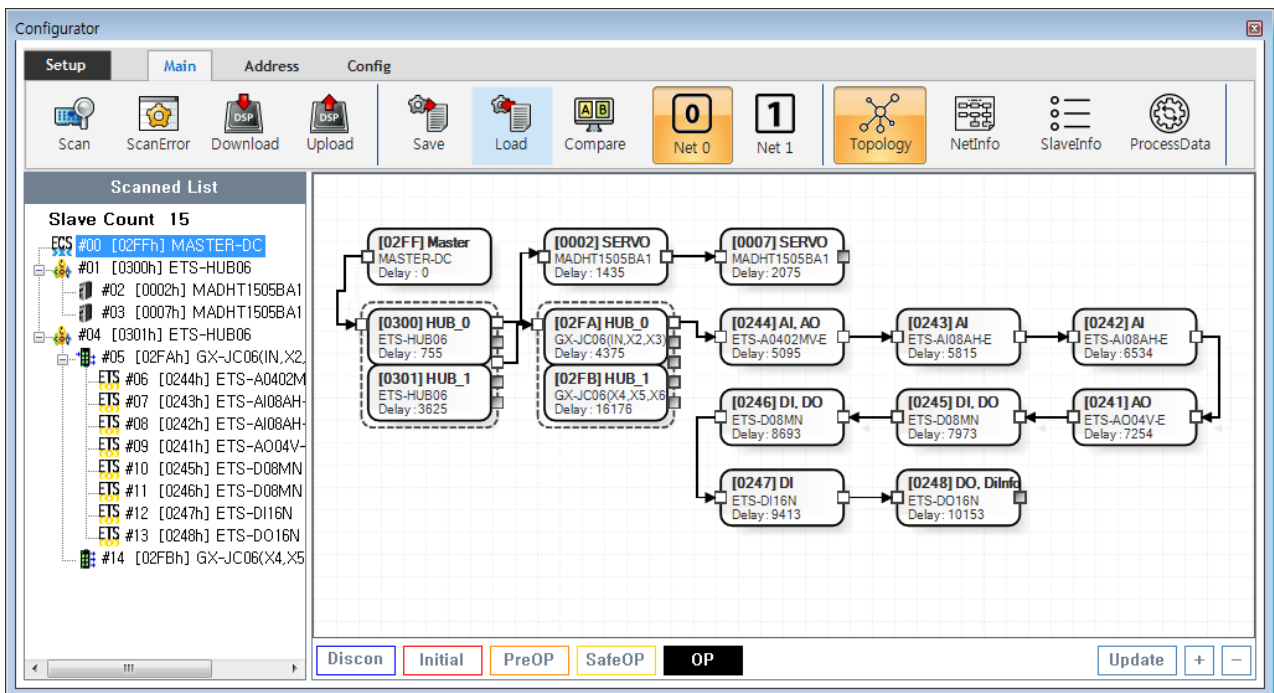
Configuration :

× Configuration , Slave Configuration

× ComiIDE v1.4.0.0



• ComiIDE Main **Config**



• Config , EtherCAT Master가 Load

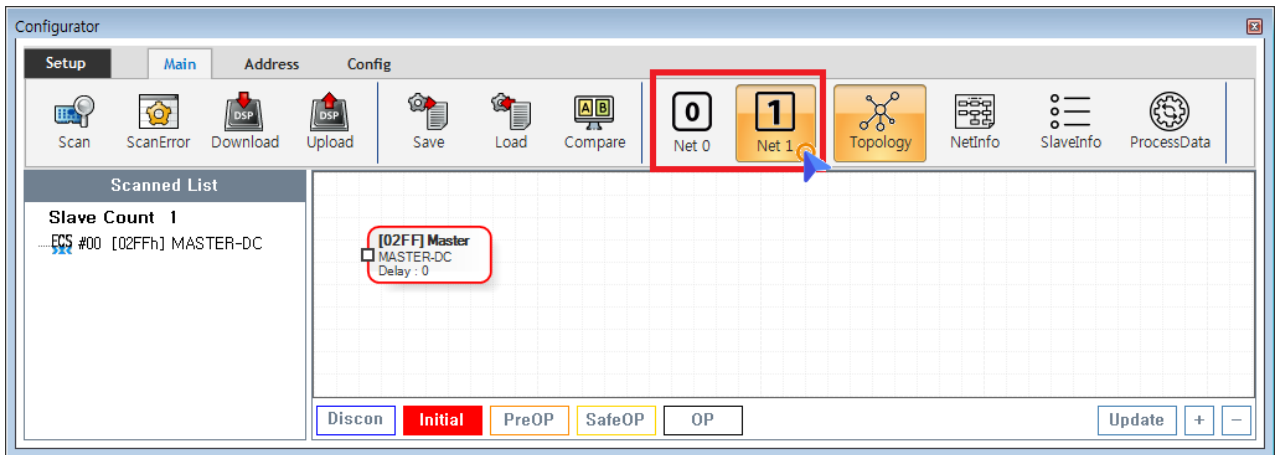
- **Device Load**
- **SW Version**

- Config 가 Update
- Config Scan - Edit - Download Configuration

ESI Import

- Scan Slave Module ESI file
- ESI ./ComilDE/Data/Xml
- 가 / ESI Configurator

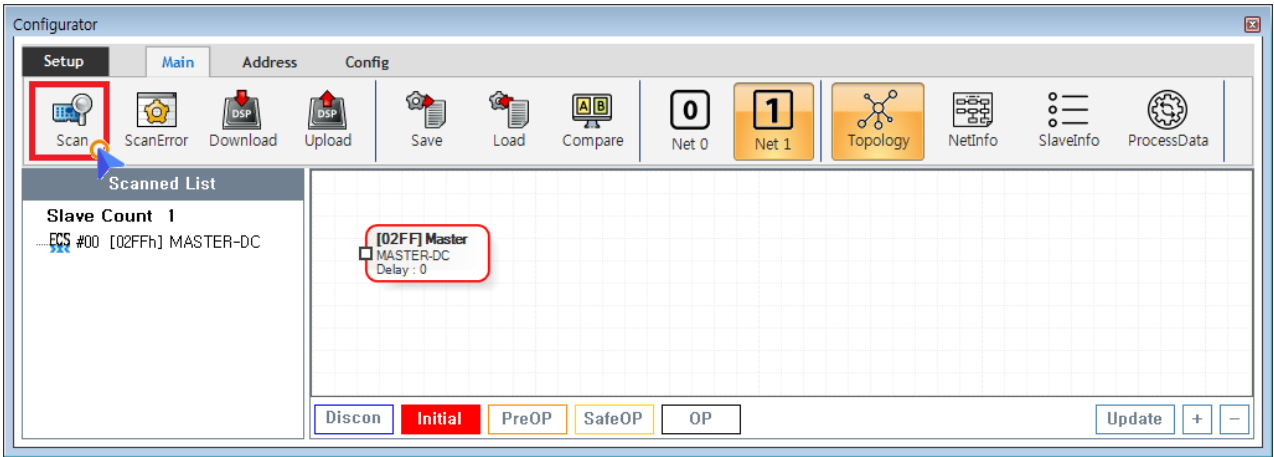
Network



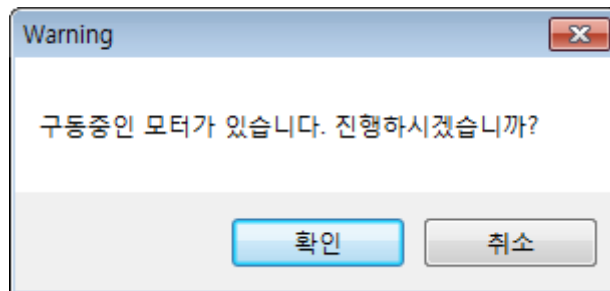
- COMI-LX550 ~ COMI-LX554 1 Network 가 , COMI-LX554 Network 가
- Network 가
 - **Net #** , Network
 - Configuration Network , Network Configuration

Scan

- Scan EtherCAT Master Slave Module



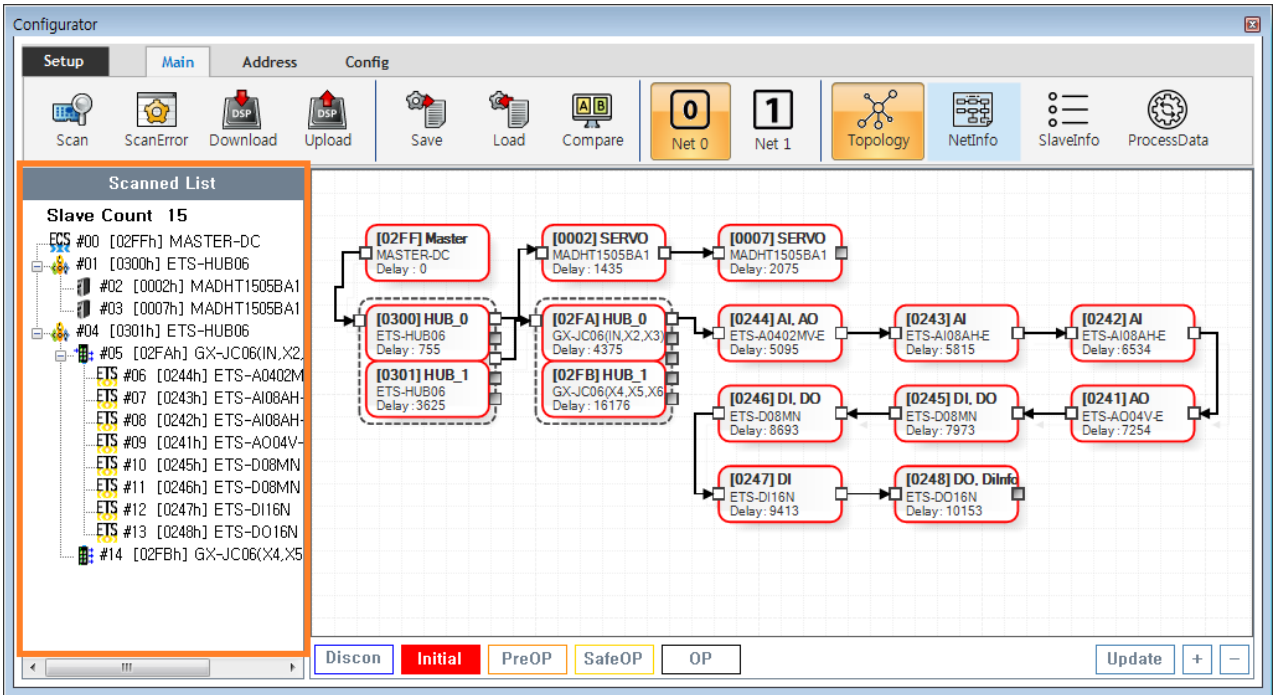
- Main Tab **Scan**
 - SCAN , SCAN Scan_failed SCAN
 - SCAN , **Scan** **ReScan**
 - **ALL**
- Scan , Slave Module AIStatus Initial
 - 가 ,



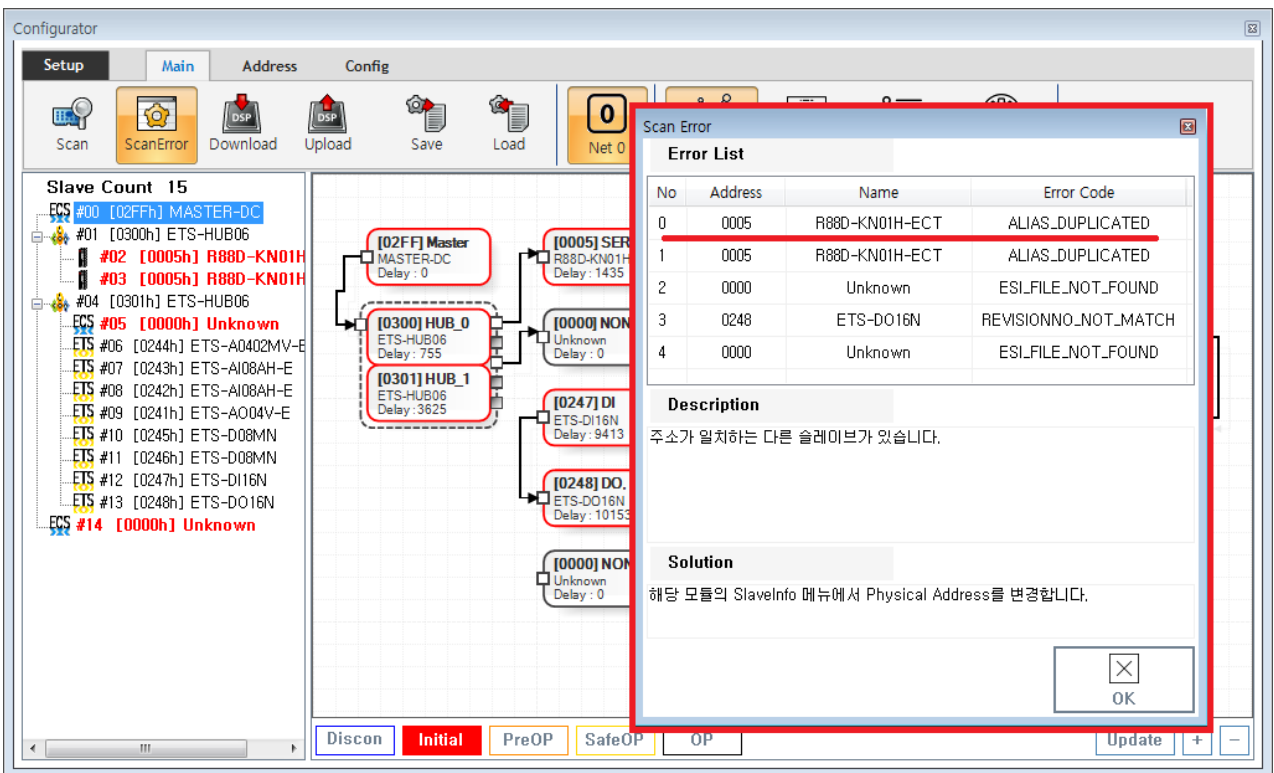
Master-DC

- Master-DC
- Slave Module , Master-DC
- Master DC가 , **Scan** **Master-DC** 가

Scan

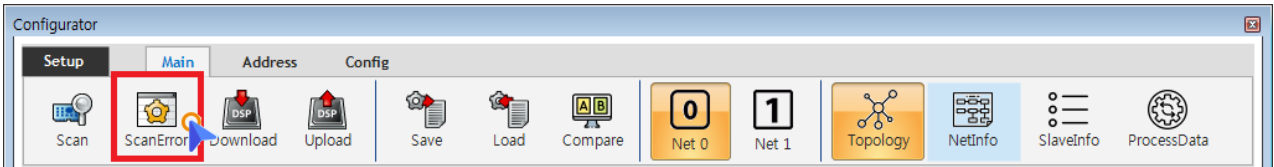


• Tree Slave가 , Slave



• 가 ScanError List

ErrorCode Scan Error 가



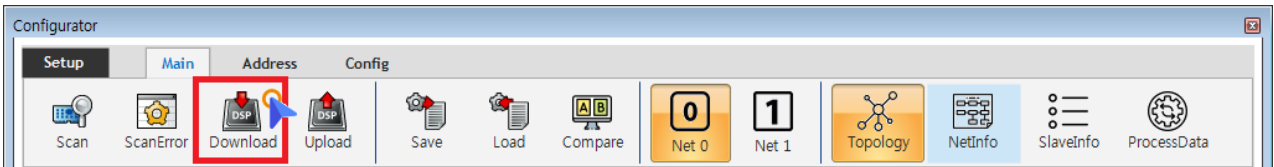
- Scan Error Main - **ScanError**
ScanError List

× **Warning!**

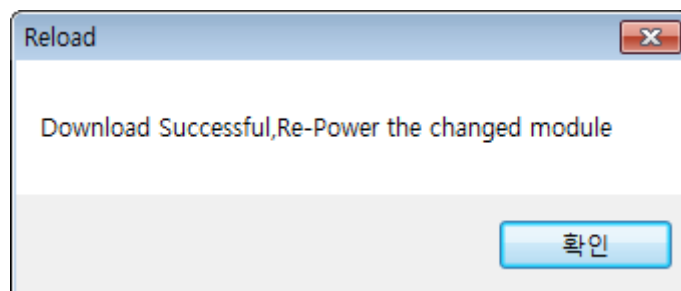
Scan Download

Download

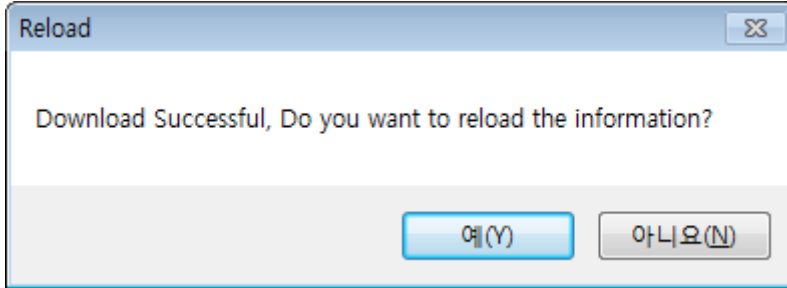
- DownLoad / Slave Master



- Main - **Download**
- Scan Error가 , Download ScanError
- ScanError가 Download 가 , AIStatus가



- EEPROM Data가 , Slave Module Configuration Address
- Slave Address가 ,



- ComilDE “ ”

Configuration Check

- Configuration , Slave AI Status 가 OP , AI Status
- Slave가 OP가 , OP

From: <https://www.comizoa.com/info/> - -

Permanent link: https://www.comizoa.com/info/doku.php?id=platform:ethercat:1_setup:10_config:20_configuration&rev=1586785416

Last update: 2024/07/08 18:22