

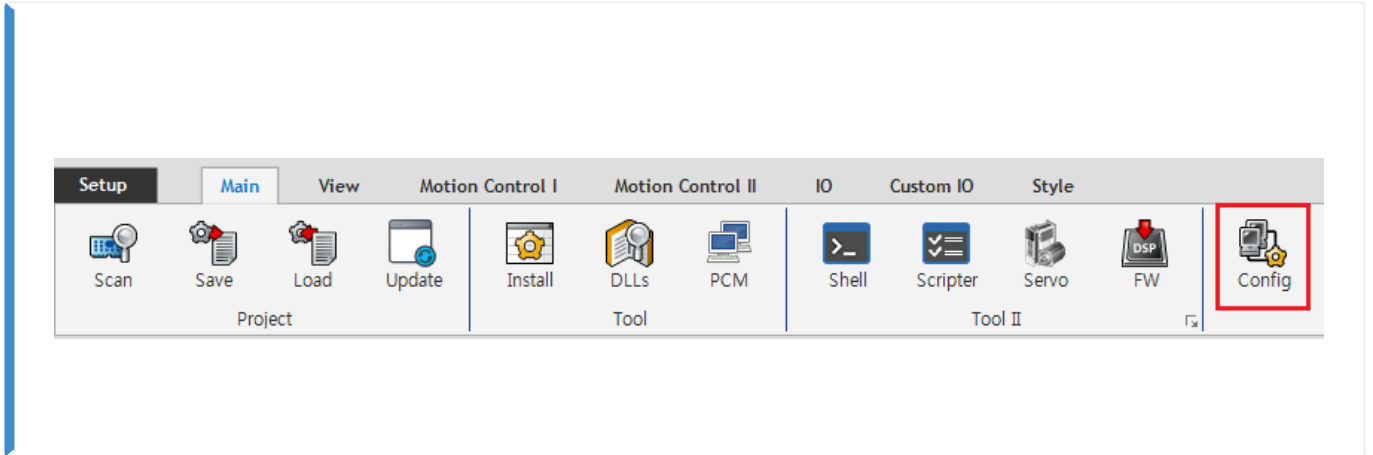
- 1
- ESI Import 2
- Network 2
- Scan 2
- Master-DC 3
- Scan 4
- Download 5
- Configuration Check 6

, Config, , ComiIDE, ComiEcatConfig

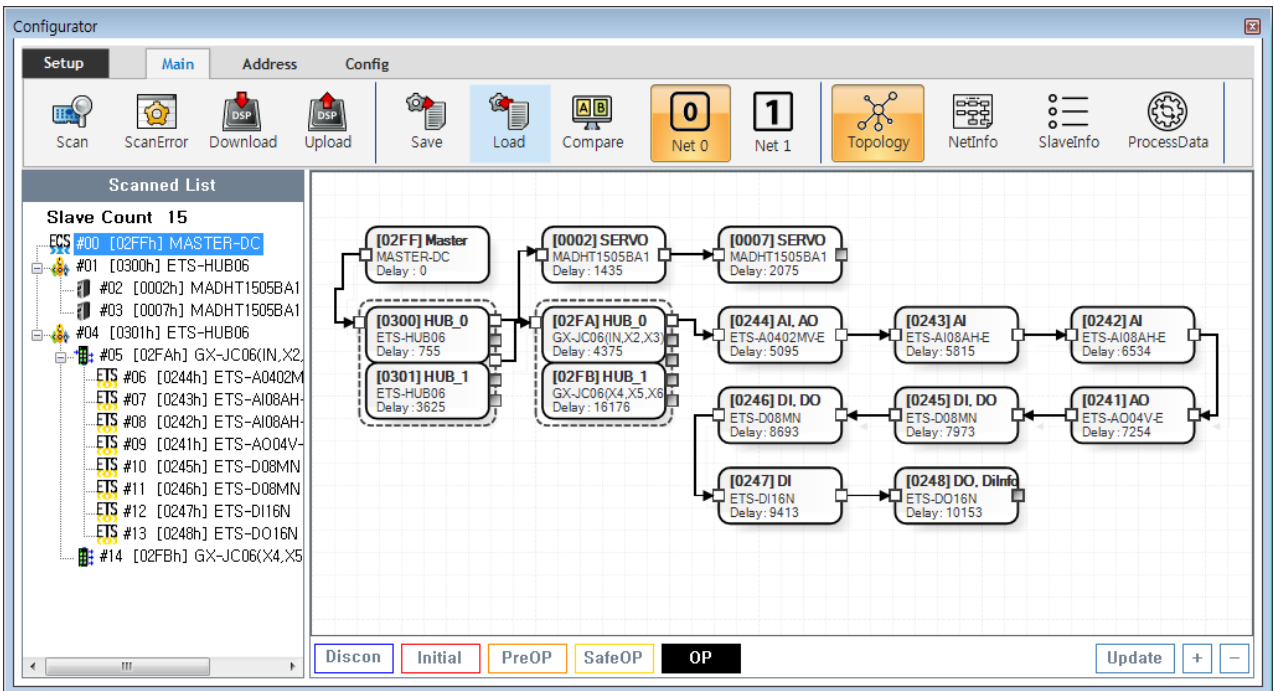
Configuration :

× Configuration , Slave Configuration

× ComiIDE v1.4.0.0



• ComiIDE Main **Config**



• Config , EtherCAT Master가 Load

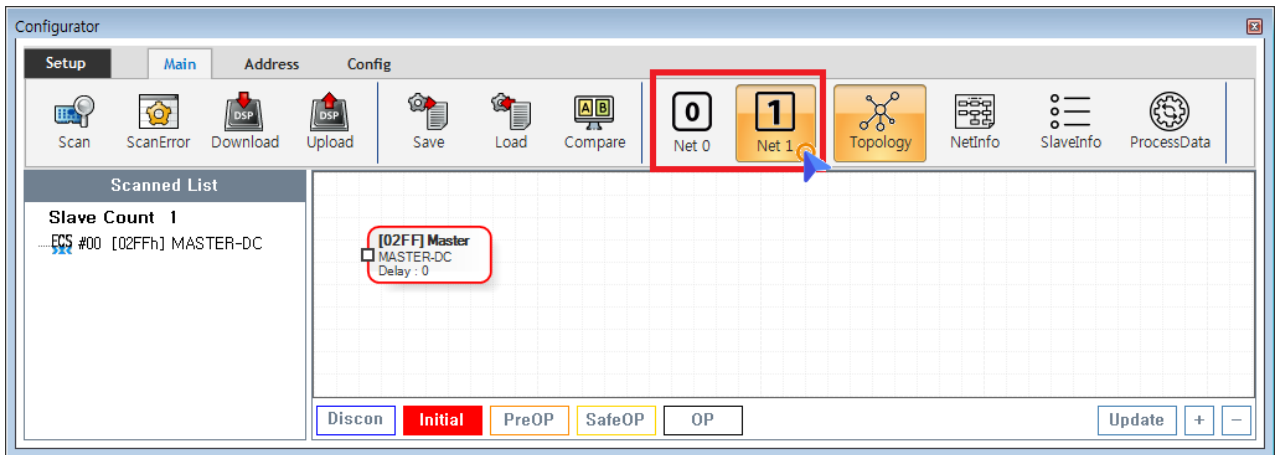
- **Device Load**
- **SW Version**

- Config 가 Update
- Config Scan - Edit - Download Configuration

ESI Import

- Scan Slave Module ESI file
- ESI ./ComilDE/Data/Xml
- 가 / ESI Configurator

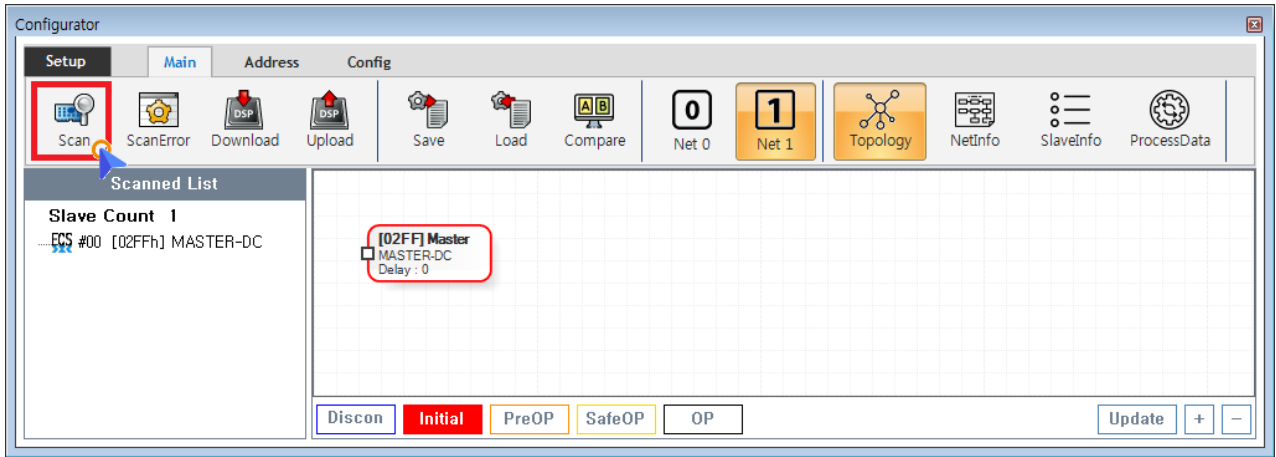
Network



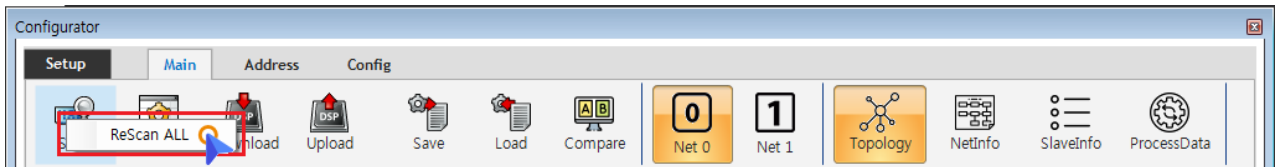
- COMI-LX550 ~ COMI-LX554 1 Network 가 , COMI-LX554 Network 가
- Network 가
 - **Net #** , Network
 - Configuration Network , Network Configuration

Scan

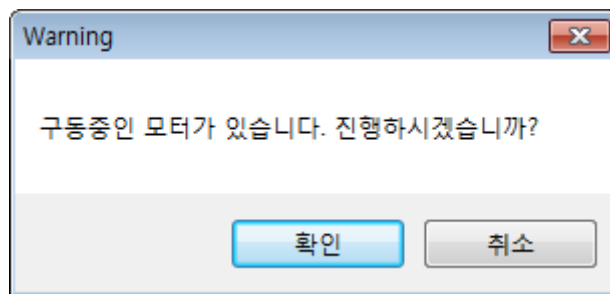
- Scan EtherCAT Master Slave Module



- Main Tab **Scan**
 - SCAN , SCAN Scan_failed SCAN
 - ALL SCAN , Scan **ReScan**



- Scan , Slave Module AIStatus Initial
 - 가 ,

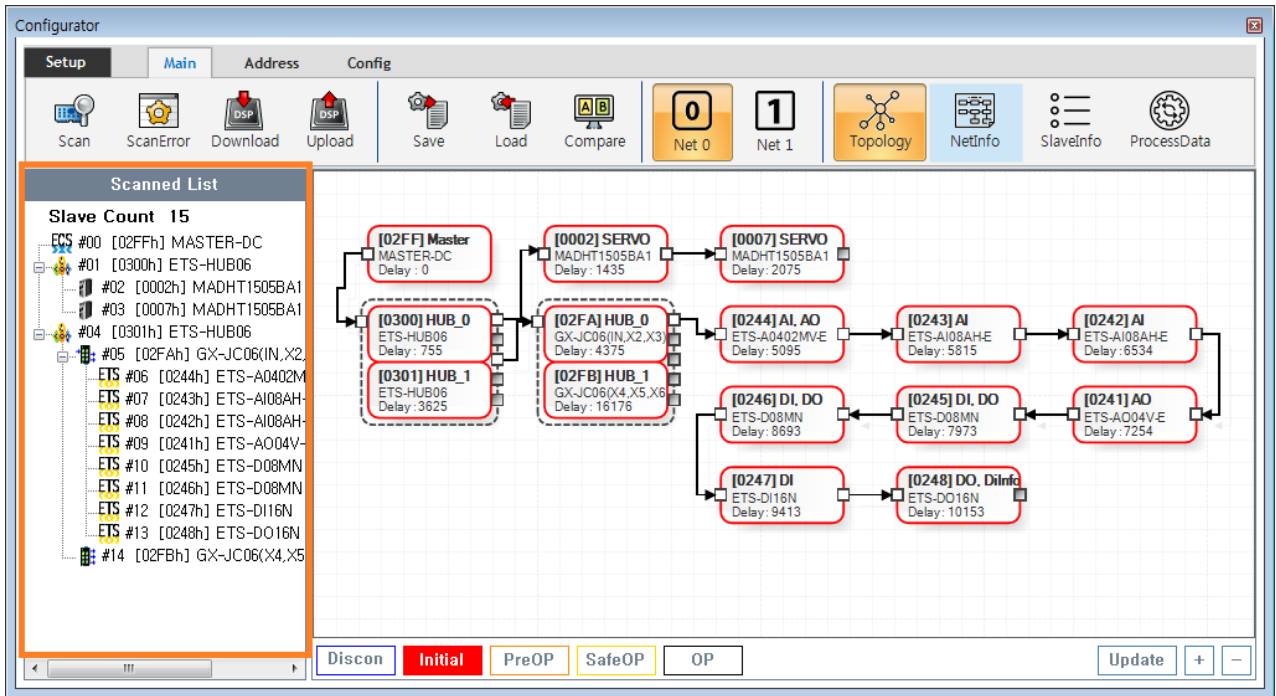


Master-DC

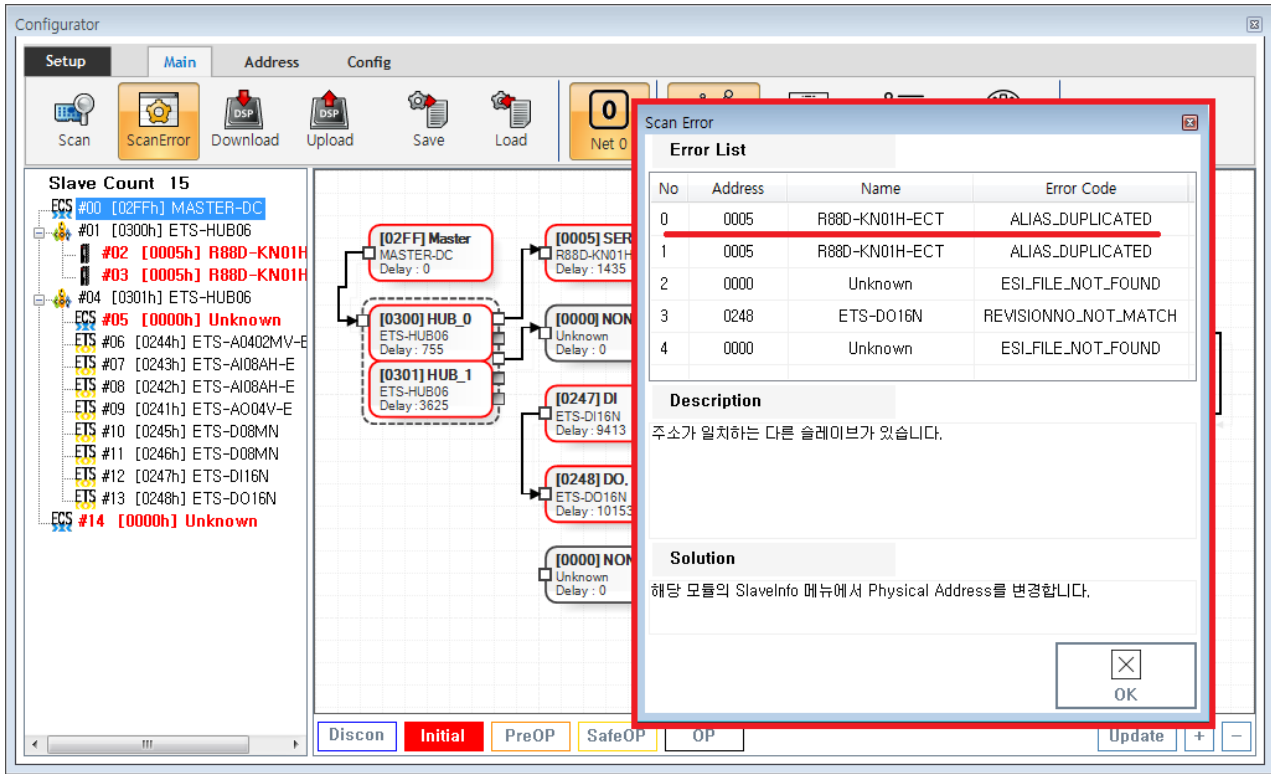
- Master-DC
- Slave Module , Master-DC

- Master DC가 , Scan Master-DC 가

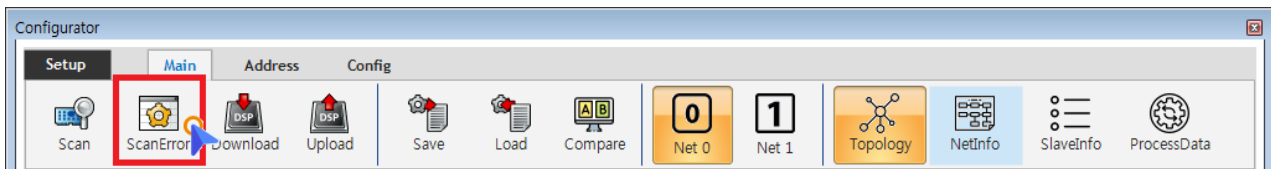
Scan



- Tree Slave가 , Slave



- 가 ScanError List
- - ErrorCode 가 Scan Error 가

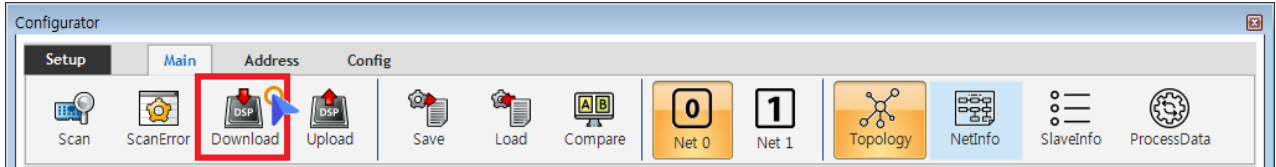


- Scan Error Main - ScanError ScanError List

× **Warning!**
Scan Download

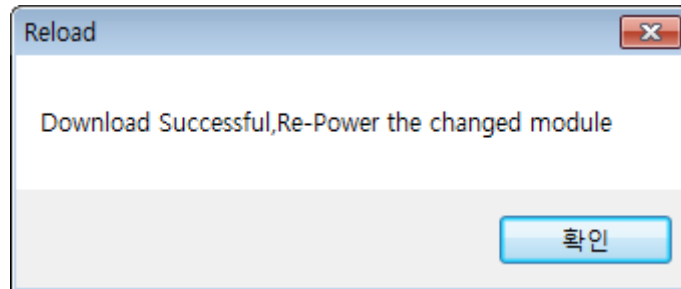
Download

- DownLoad / Slave Master

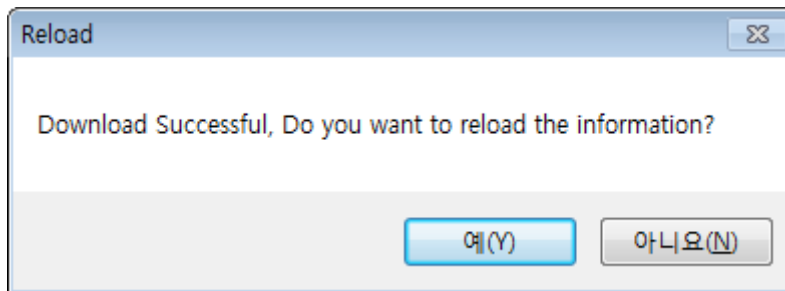


- Main - **Download**

- Scan Error가 , Download ScanError
- ScanError가 Download 가 , AIStatus가



- EEPROM Data가 , Slave Module
 - Configuration Address
 - Slave Address가 ,



- ComilDE
 - “ ”

Configuration Check

- Configuration , Slave AI Status 가 OP

- , **AI Status** .
- Slave가 OP가 , **OP** .

From:

<https://www.comizoa.com/info/> - -

Permanent link:

https://www.comizoa.com/info/doku.php?id=platform:ethercat:1_setup:10_config:20_configuration&rev=1586855227

Last update: **2024/07/08 18:22**