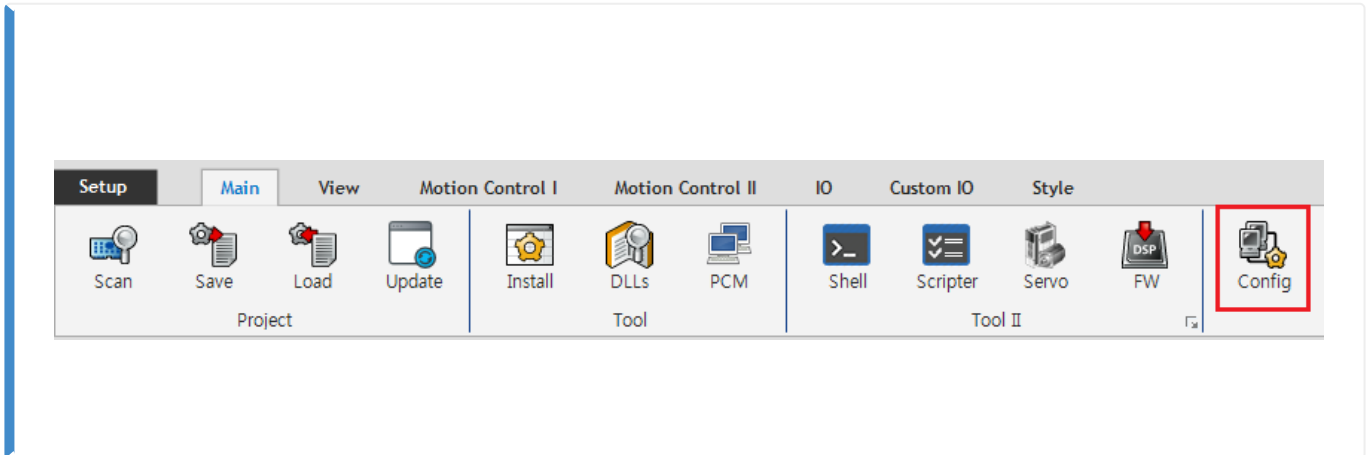


Configuration : 1
..... 1
ESI Import 2
Network 2
Scan 2
Master-DC 4
..... 4
Scan 4
Download 5
Configuration Check 6

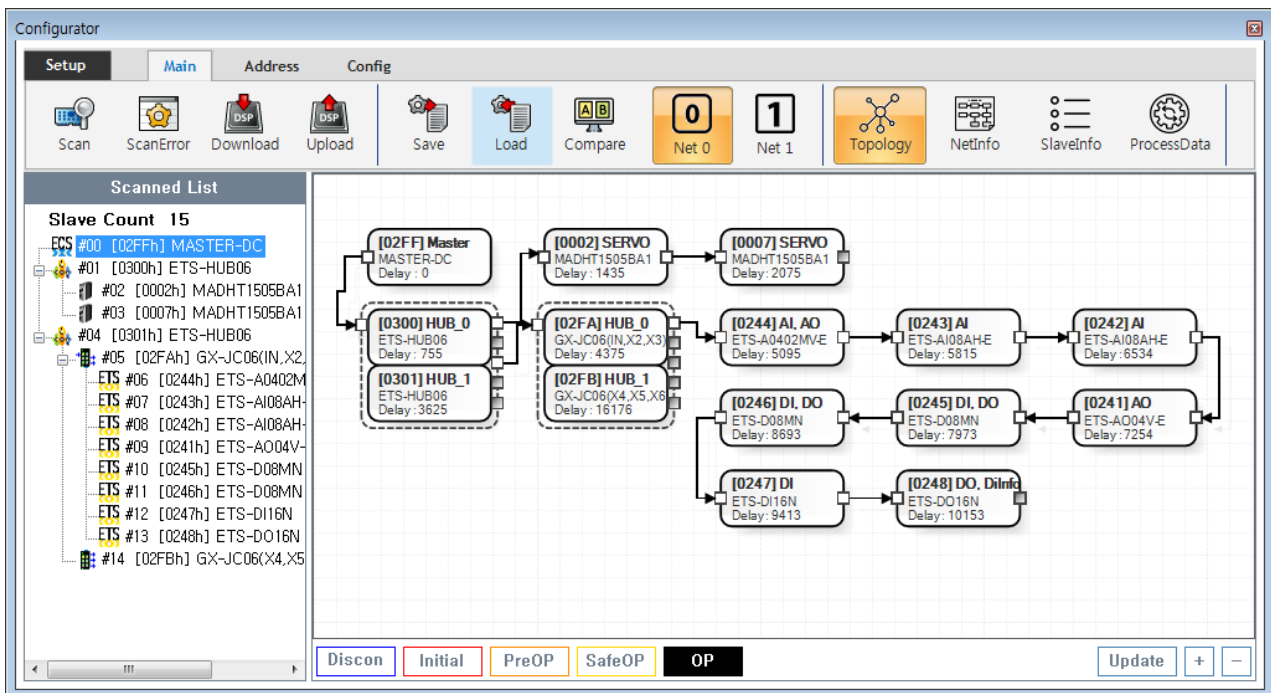
Configuration :

× Configuration , Slave Configuration

× ComiIDE v1.4.0.0



• ComiIDE Main **Config**



• Config , EtherCAT Master가 Load

- Device Load
- SW Version

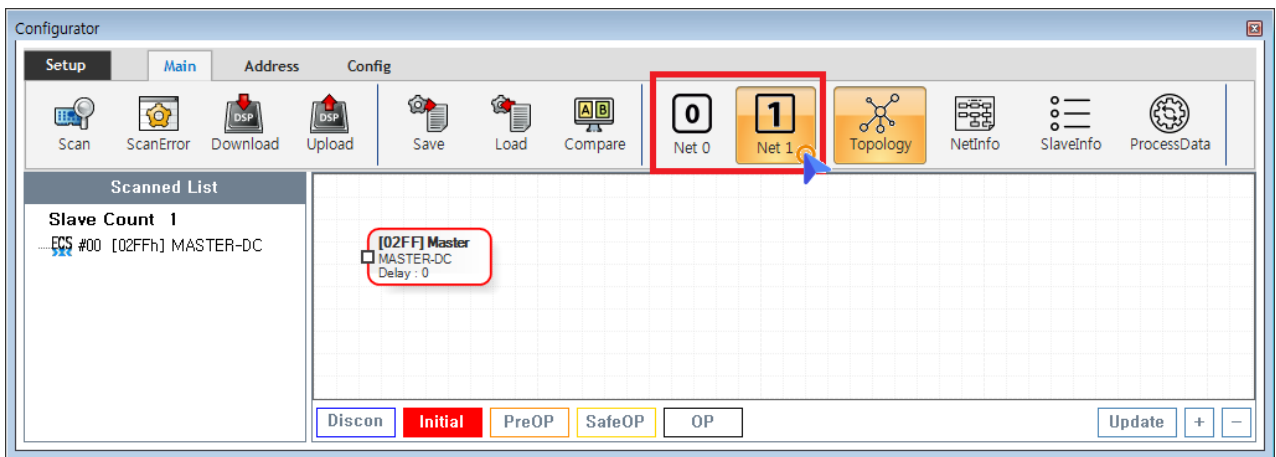
• Config 가 Update

- Config Scan - Edit - Download Configuration

ESI Import

- Scan **Slave Module ESI file**
- ESI **./ComilDE/Data/Xml**
- 가 / ESI Configurator

Network

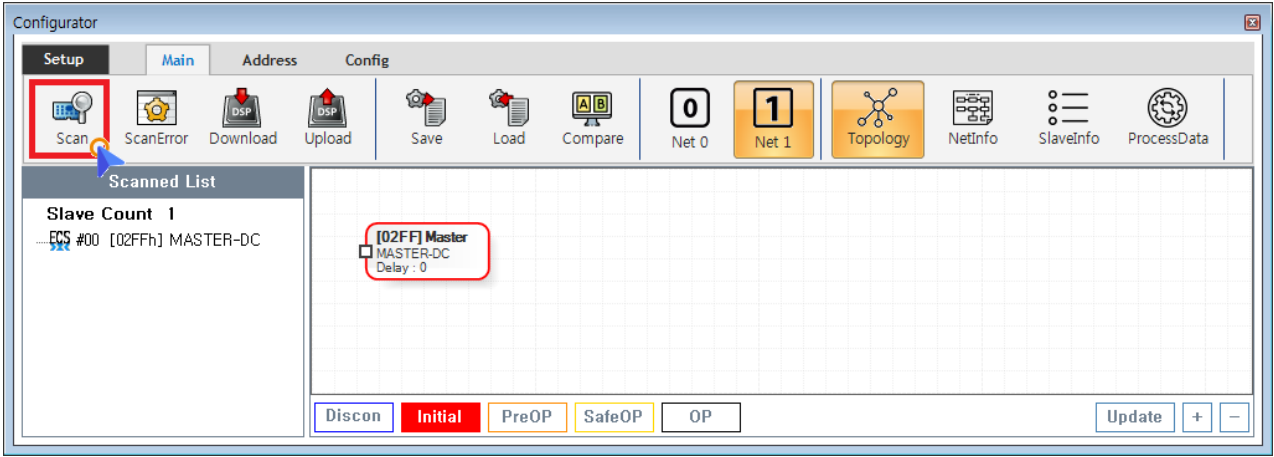


- COMI-LX550 ~ COMI-LX552 1 Network 가 , COMI-LX554
Network 가

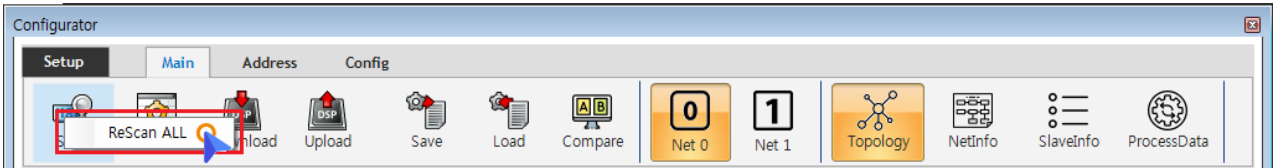
- Network 가
 - **Net #** , Network
 - Configuration Network , Network Configuration

Scan

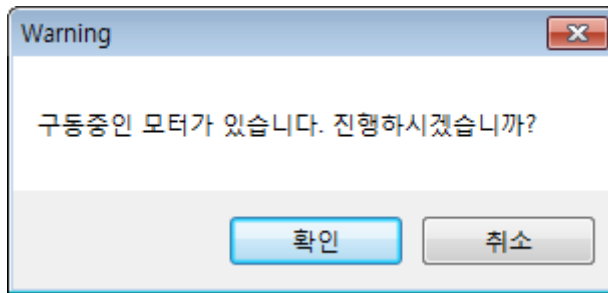
- Scan EtherCAT Master Slave Module



- Main Tab **Scan**
 - SCAN , SCAN Scan_failed SCAN
 - ALL SCAN , Scan **ReScan**



- Scan , Slave Module AIStatus Initial
 - 가 ,



× **Warning!**

Scan Slave Module AIStatus가 Initial
 Scan Click Slave Module AI Status Change(To Initial)
 , Module Error가 Status , SCAN
 EEPROM_READ_FAILED 가
 , Master AIStatus Initial

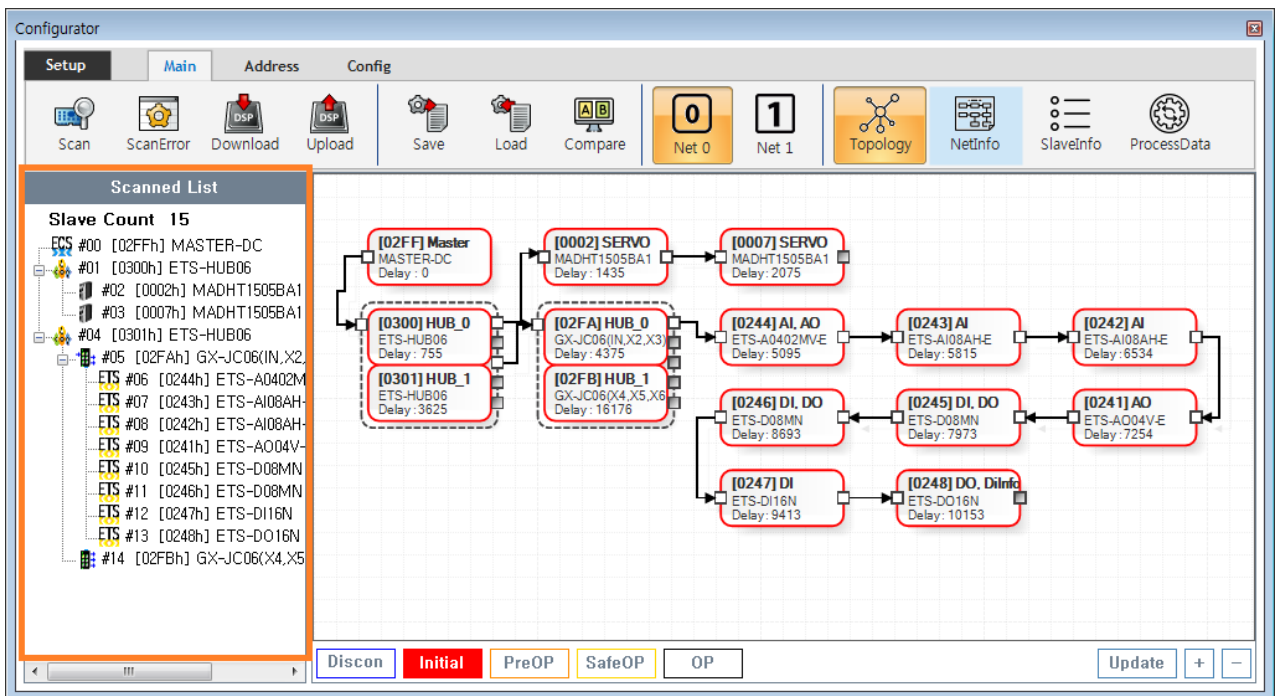
Master-DC

- Master-DC
- Slave Module , Master-DC
- Master DC가 , **Scan** **Master-DC** 가

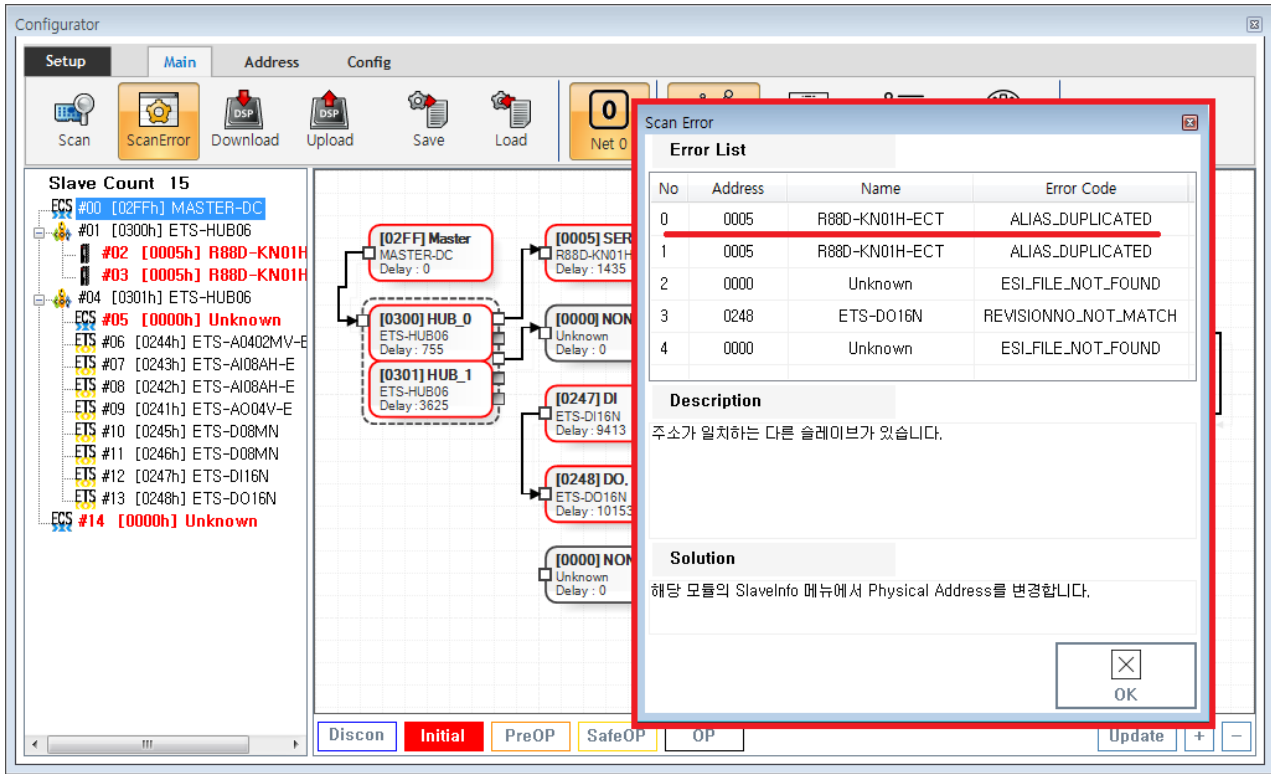
- ID Switch가 Slave , 가 Slave
 - 가 , EEPROM

- ID 가 0 **SlaveInfo**
 - PhysAddr**

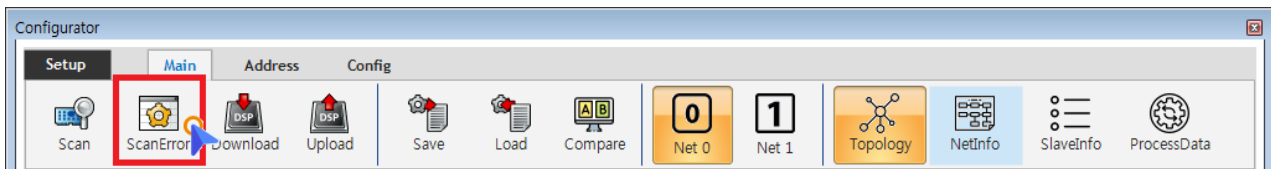
Scan



- Tree Slave가 , Slave



- 가 ScanError List
- - ErrorCode Scan Error 가

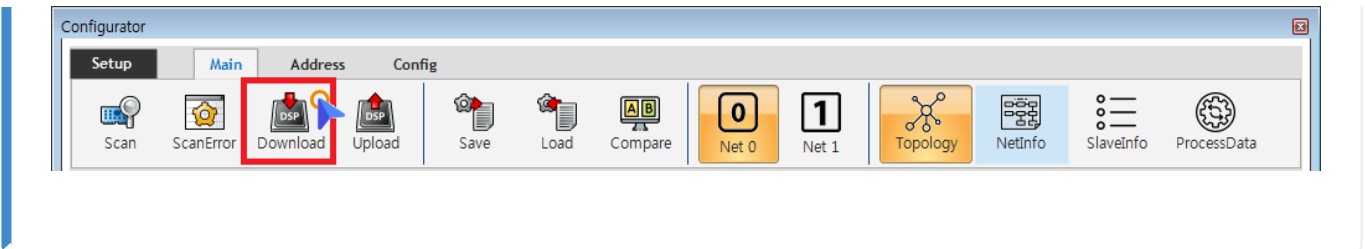


- Scan Error Main - ScanError ScanError List

× **Warning!**
Scan Download

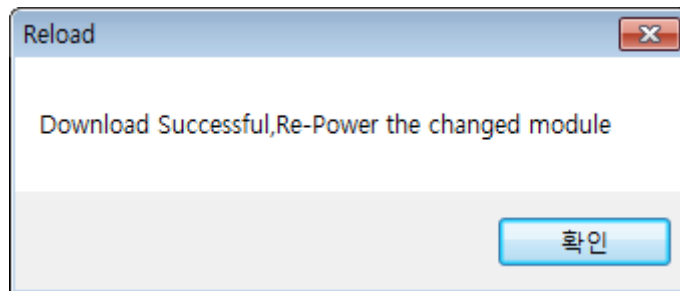
Download

- DownLoad / Slave Master

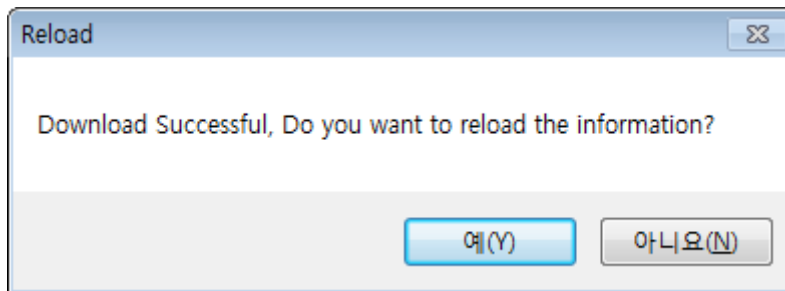


- Main - **Download**

- Scan Error가 , Download ScanError
- ScanError가 Download 가 , AIStatus가



- EEPROM Data가 , Slave Module
 - Configuration Address
 - Slave Address가 ,



- ComilDE
 - “ ”

Configuration Check

- Configuration , Slave AI Status 가 OP

- , **AI Status** .
- Slave가 OP가 , **OP** .

From:

<https://www.comizoa.com/info/> - -

Permanent link:

https://www.comizoa.com/info/doku.php?id=platform:ethercat:1_setup:10_config:20_configuration&rev=1607576751

Last update: **2024/07/08 18:22**