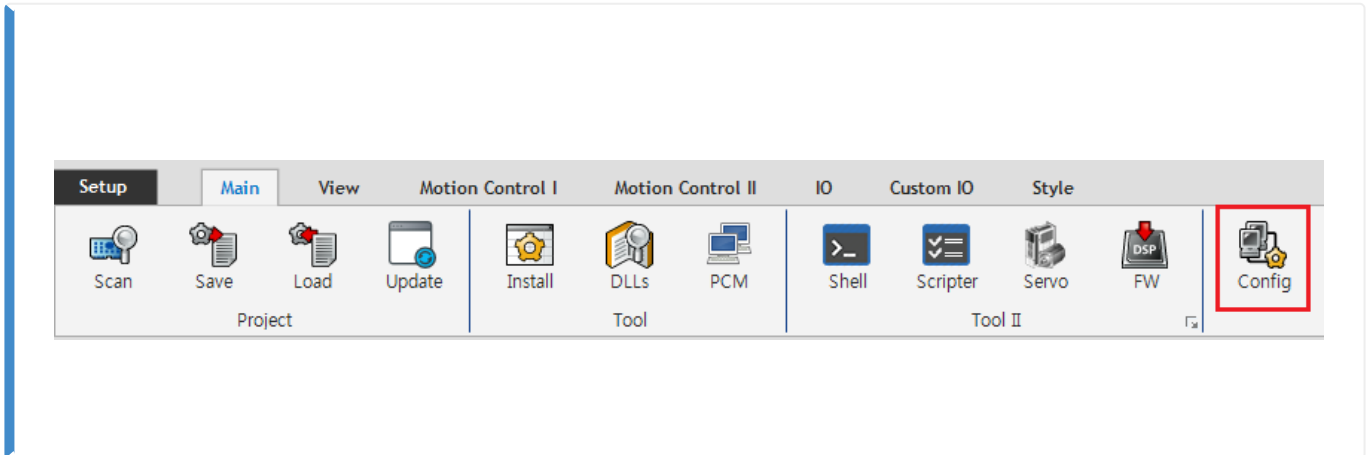


Configuration : ..... 1  
..... 1  
ESI Import ..... 2  
Network ..... 2  
Scan ..... 2  
Master-DC ..... 4  
..... 4  
Scan ..... 4  
Download ..... 5  
Configuration Check ..... 6

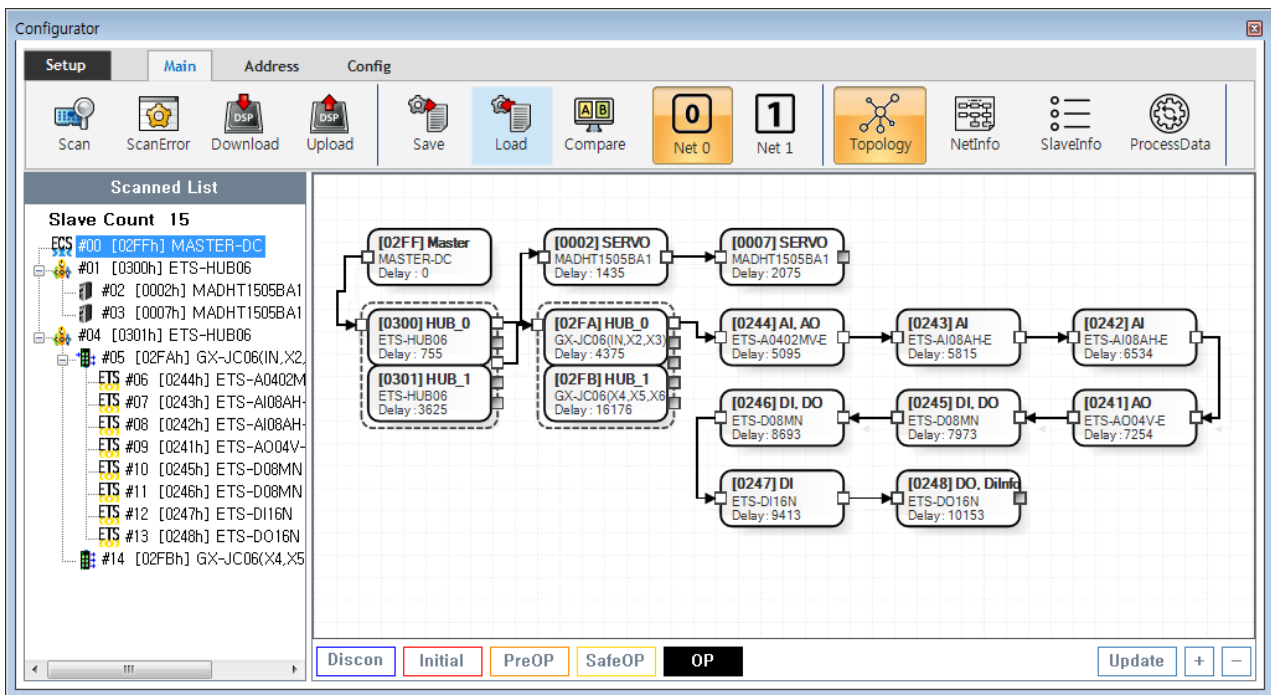
# Configuration :

× Configuration , Slave Configuration

× ComiIDE v1.4.0.0



• ComiIDE Main **Config**



• Config , EtherCAT Master가 Load

- Device Load
- SW Version

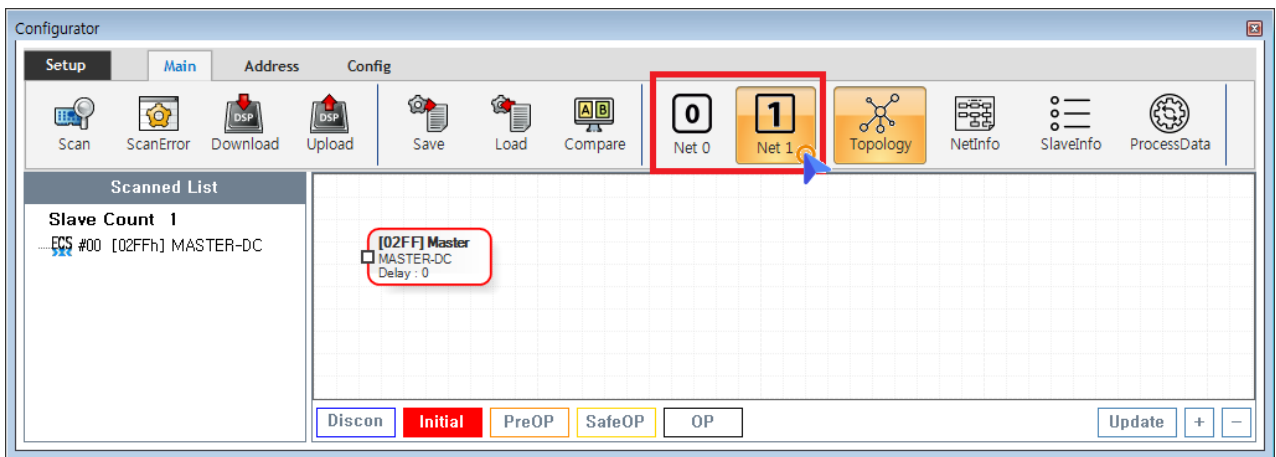
• Config 가 Update

- Config      Scan - Edit - Download      Configuration

### ESI      Import

- Scan      **Slave Module      ESI file**
- ESI      **./ComilDE/Data/Xml**
- 가 /      ESI      Configurator

### Network

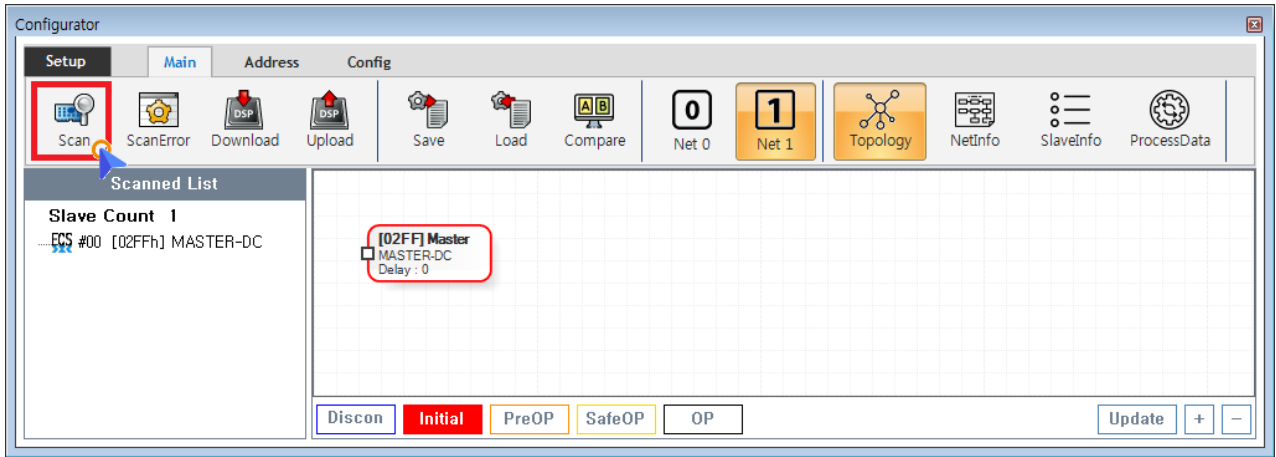


- COMI-LX550 ~ COMI-LX552      1      Network      가      , COMI-LX554  
Network      가

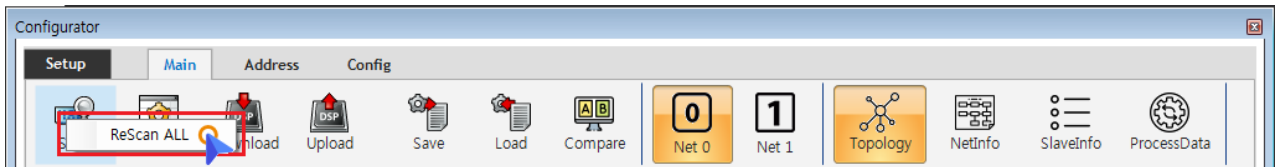
- Network      가
  - **Net #**      , Network
  - Configuration      Network      ,      Network      Configuration

### Scan

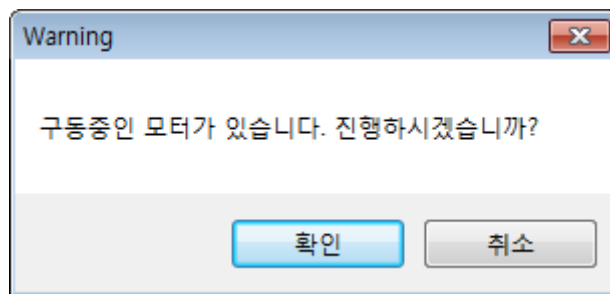
- Scan      EtherCAT Master      Slave Module



- Main Tab **Scan**
  - SCAN , SCAN Scan\_failed SCAN
  - ALL SCAN , Scan **ReScan**



- Scan , Slave Module AIStatus Initial
  - 가 ,



× **Warning!**  
**Scan Slave Module AIStatus가 Initial**  
 Scan Click Slave Module AI Status Change(To Initial)  
 , Module Error가 Status , SCAN  
 EEPROM\_READ\_FAILED 가  
 , Master AIStatus Initial

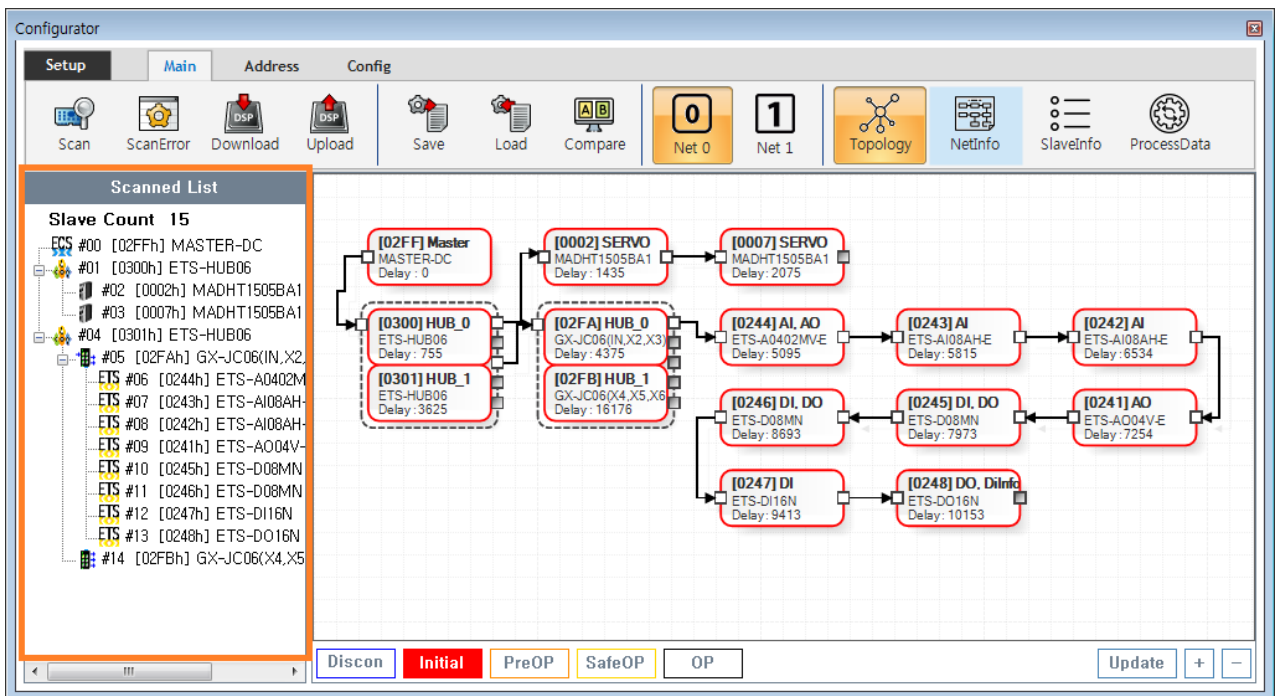
### Master-DC

- Master-DC
- Slave Module , Master-DC
- Master DC가 , **Scan Master-DC** 가

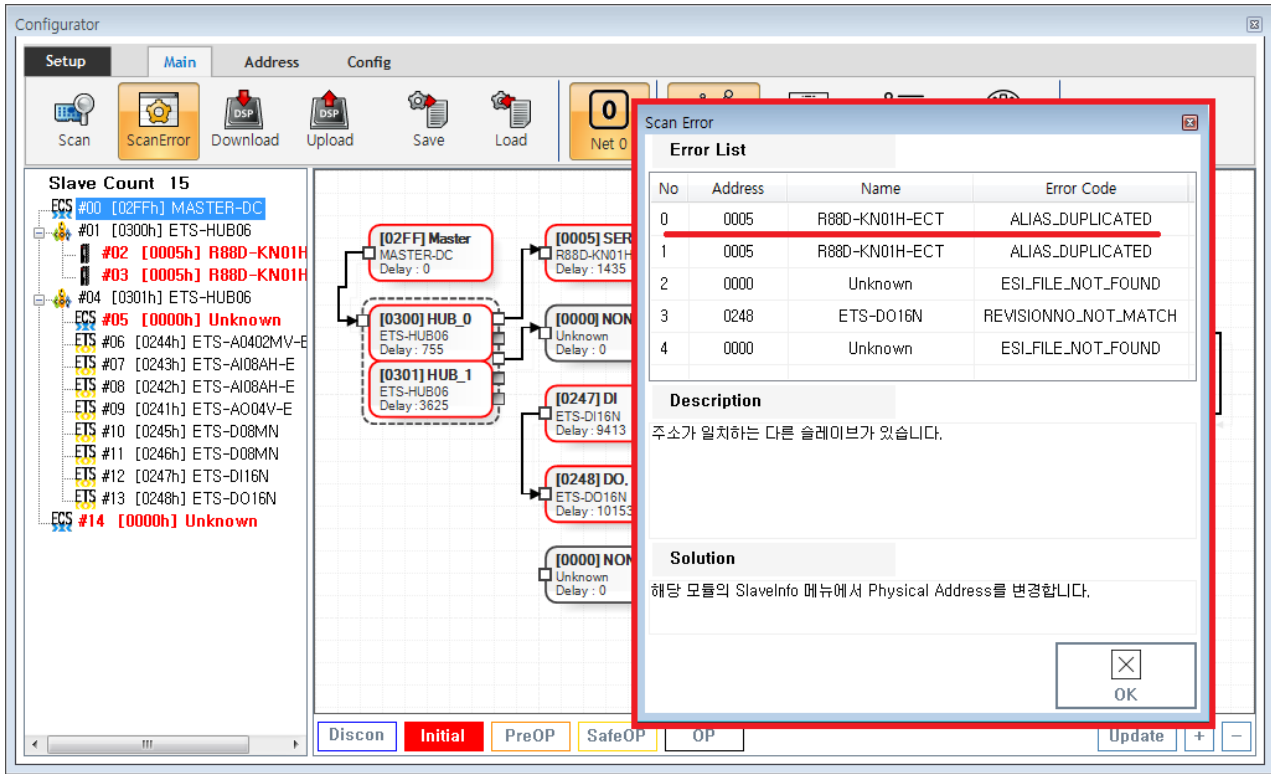
- ID Switch가 Slave , 가 Slave
  - 가 , EEPROM

- ID 가 0 **SlaveInfo**
  - PhysAddr**

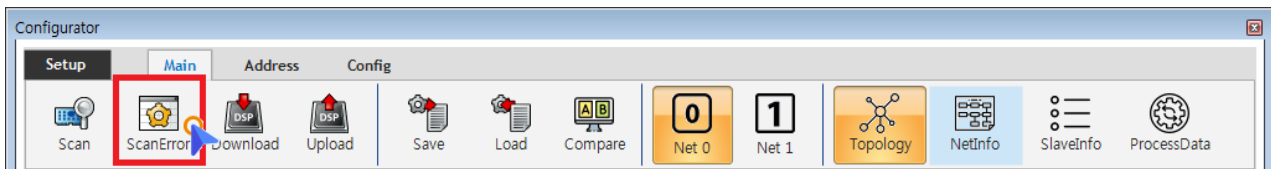
### Scan



- Tree Slave가 , Slave



- 가 ScanError List
- - ErrorCode Scan Error 가

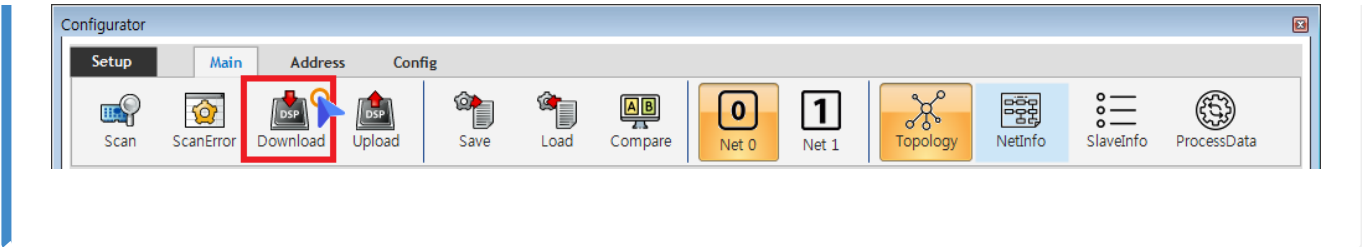


- Scan Error Main - ScanError ScanError List

× **Warning!**  
Scan Download

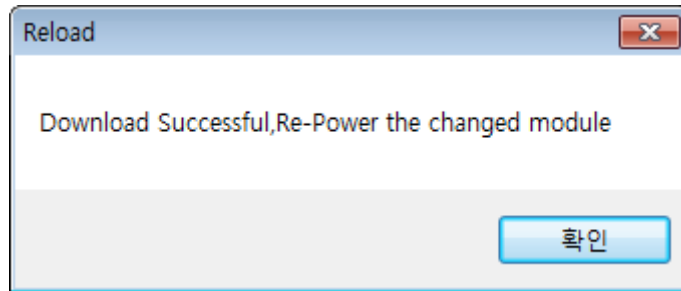
**Download**

- DownLoad / Slave Master

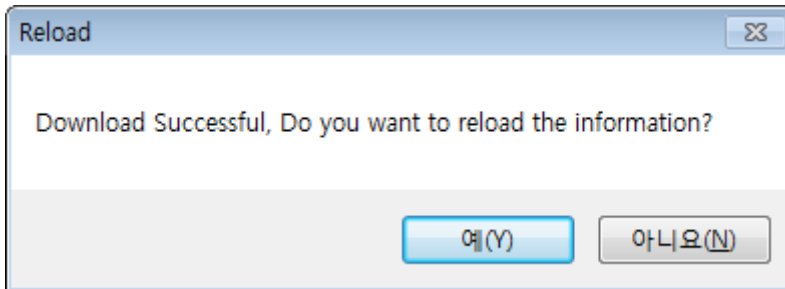


- Main - **Download**

- Scan Error가 , Download ScanError
- ScanError가 Download 가 , AIStatus가



- EEPROM Data가 , Slave Module
  - Configuration Address
  - Slave Address가 ,



- ComilDE
  - “ ”

### Configuration Check

- Configuration , Slave AI Status 가 OP

- , **AI Status** .
- Slave가 OP가 , **OP** .

From:

<https://www.comizoa.com/info/> - -

Permanent link:

[https://www.comizoa.com/info/doku.php?id=platform:ethercat:1\\_setup:10\\_config:20\\_configuration&rev=1607576787](https://www.comizoa.com/info/doku.php?id=platform:ethercat:1_setup:10_config:20_configuration&rev=1607576787)

Last update: **2024/07/08 18:22**