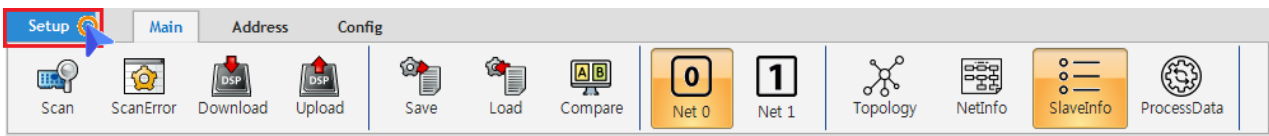


---

Setup .....	1
Scan Checking .....	2
Scan Option .....	2
Error .....	3
Base Address (Except for 402 profile) .....	3

# Setup

× Configurator



• Setup

Setup

Config Setup

**Scan Checking**

- Vendor ID
- Product Code
- Revision Number
- Serial Number

**Scan Option**

- Tree 로 보기
- 읽기 실패한 모듈만 재스캔
- Read 0xF050
- Alias 가 바뀐 경우에만 EEPROM에 Download

**Error**

- RevisionNo 가 다를 시 에러로 처리
- Unknown Slave 에러로 처리

**Base Address (Except for 402 profile)**

Base Address

- For COMIZOA Slaves
- For other slaves

**DC Measure**

- Dc Measure on downloading

- Configuration

- IDE

- IDE Update IDE

### Scan Checking

- Slave

- VendorID Product Code

- Revision Number
  - Revision Number가 , Scan 가

### Scan Option

#### Tree

- Slave List

- Tree , Slave Type Tree

- Scan Tree가

- , Scan Scan Scan
  - , 'ReScan All' Scan

#### Read 0xF050 / Detect Modules

- Slot MDP Type , 가 slot
  - , SlotInfo Tab slot 가

#### Alias가 EEPROM Download

- Write , 가 EEPROM

### Error

- 가 , Download .

### Base Address (Except for 402 profile)

- 402 Profile(Driver) Base Address .
- DeviceID Switch Base Address 0~255 0~15 Address가 .

From:  
<https://www.comizoa.com/info/> - -

Permanent link:  
[https://www.comizoa.com/info/doku.php?id=platform:ethercat:1\\_setup:10\\_config:20\\_desc:05\\_setup&rev=1592559290](https://www.comizoa.com/info/doku.php?id=platform:ethercat:1_setup:10_config:20_desc:05_setup&rev=1592559290)

Last update: **2024/07/08 18:22**