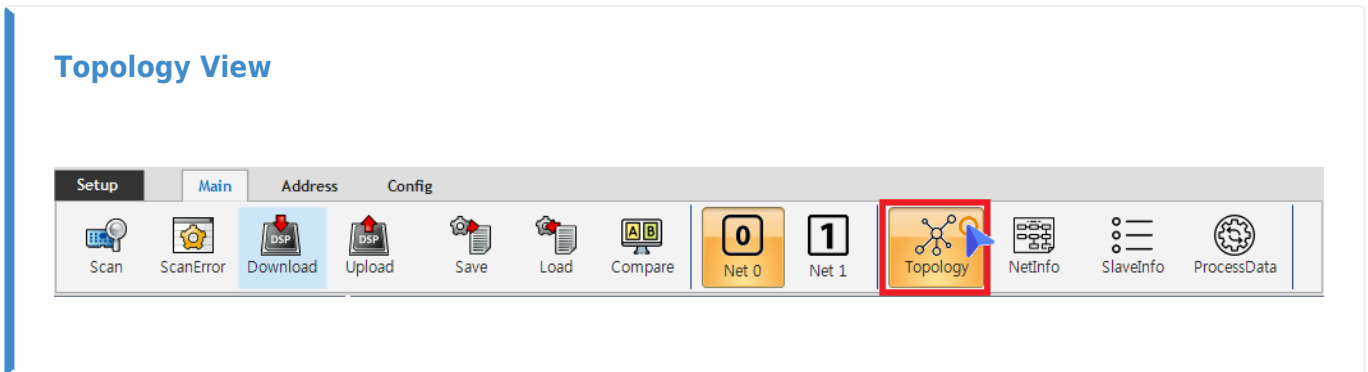


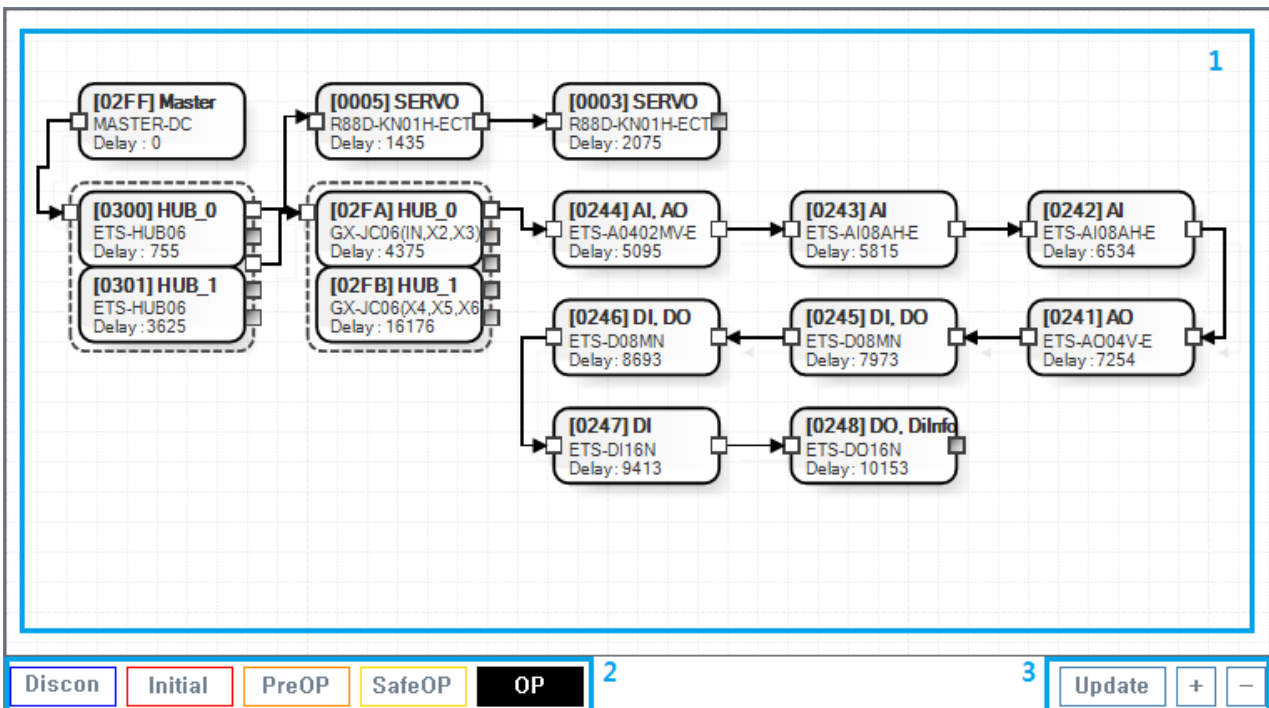
Topology View ..... 1  
..... 1  
1. Main View ..... 2  
Topology View ..... 4

# Topology View

× Configurator Topology View



- Topology



- 1. MainView : Table Line Topology
  - Slave
  - Slave ESC Memory Read / Write / Update
- 2. AI Status Control Panel
  - Slave AI Statue

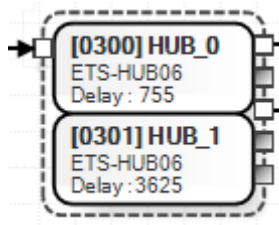
- 3. Display Control Panel
  - MainView

### 1. Main View

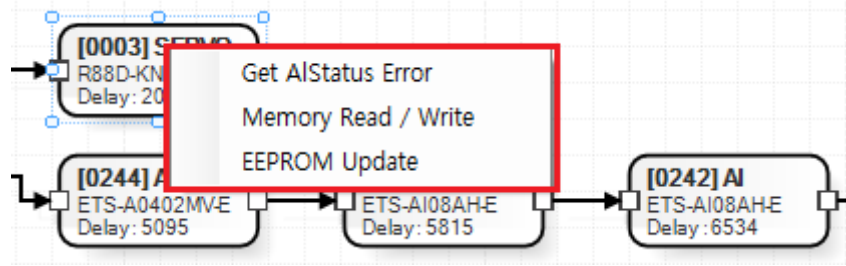
- Table ESC
- Table 가
  - Physical Address (Hexa)
  - SlaveType (Servo / DI / DO )
  - DC Delay
  - Port ,
  - AI Status



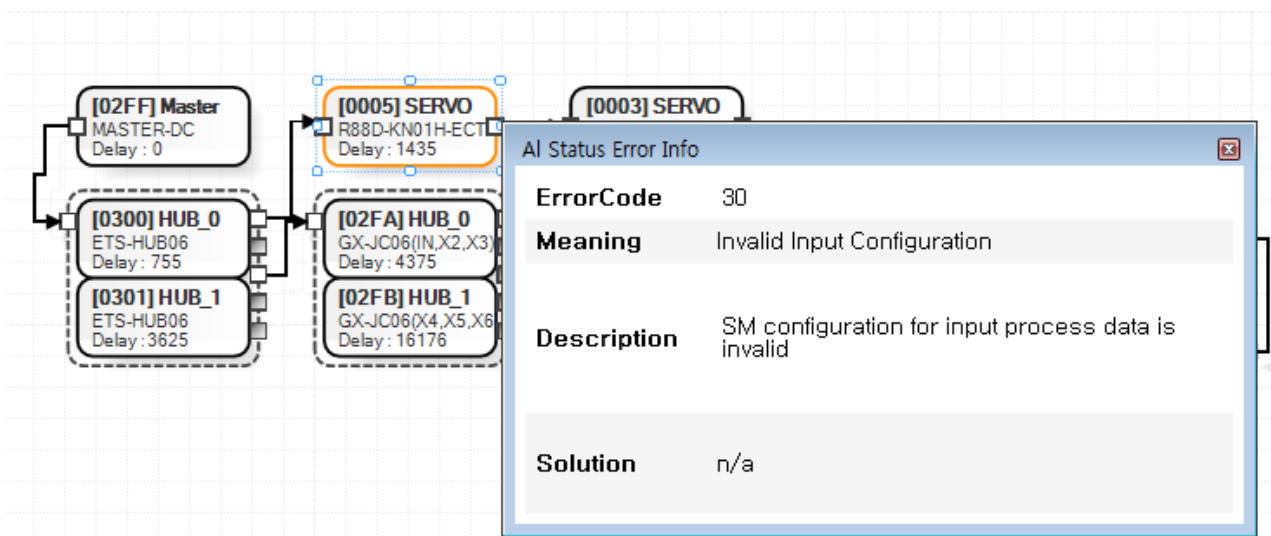
- - Physical Address : **0x0003**
  - SlaveType : **Servo**
  - DC Delay : **2075ns**
  - Port : 2 가 Port 1 port(Inport) Open
  - AIStatus : **OP**
- ESC가 , E-BUS



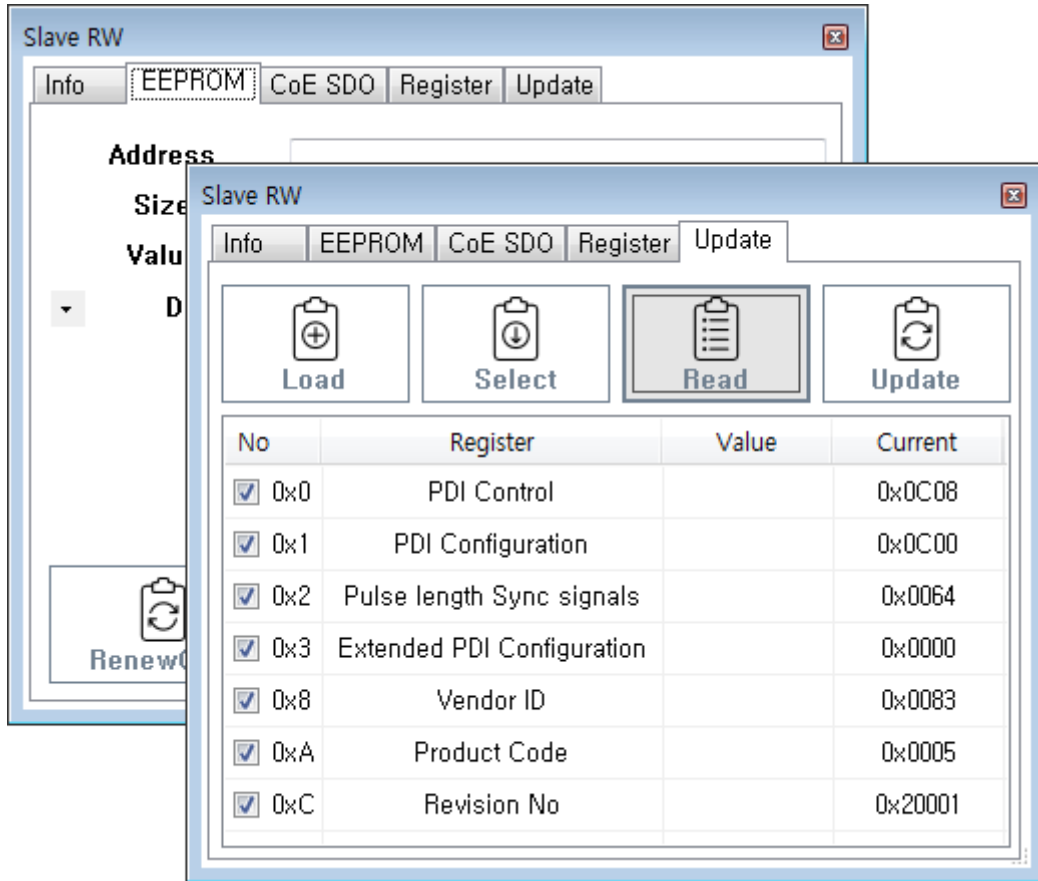
- Table , 가



- Get AIStatus Error
  - AI Status가 , Error Code



- Memory Read / Write
  - EEPROM, Coe SDO, Register Read / Write
  - **SlaveR/W**
- EEPROM Update
  - EEPROM ConfigData Update
  - **SlaveR/W**



× **Warning!**

EEPROM\_READ\_FAILED      ScanError 가      , Slave Topology가

**Topology View**

- Slave AI Status
- Slave Table
- Disconnect : Slave AI-Status 가 Disconnect
- Initial : Slave AI Status Initial
  - Slave
- PreOP : Slave AI Status PreOP
  - Slave
- SafeOP : Slave AI Status SafeOP
  - Slave
- OP : Slave AI Status OP
  - Slave
- AI Status가 Slave가 , **AI Status**

From:

<https://www.comizoa.com/info/> - -

Permanent link:

[https://www.comizoa.com/info/doku.php?id=platform:ethercat:1\\_setup:10\\_config:20\\_desc:10\\_topologyview&rev=1586239592](https://www.comizoa.com/info/doku.php?id=platform:ethercat:1_setup:10_config:20_desc:10_topologyview&rev=1586239592)

Last update: **2024/07/08 18:22**