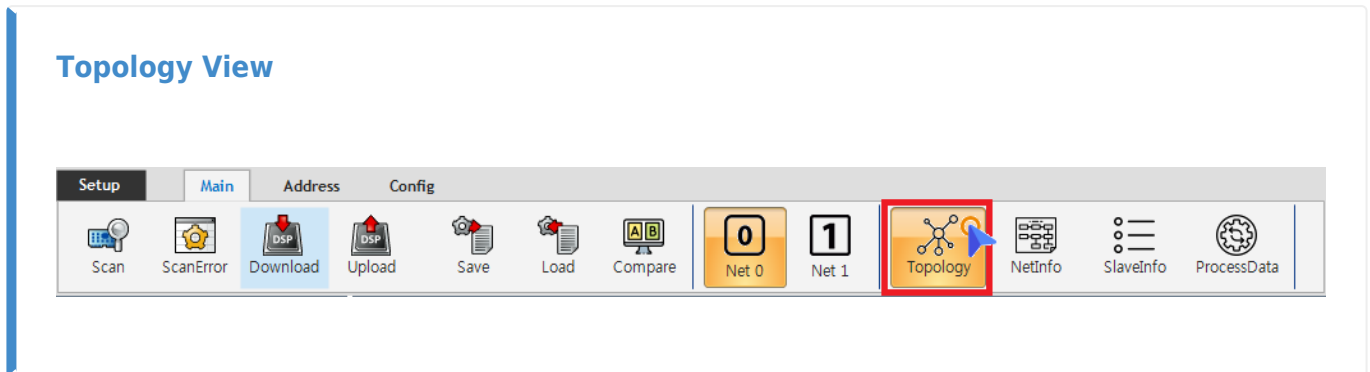


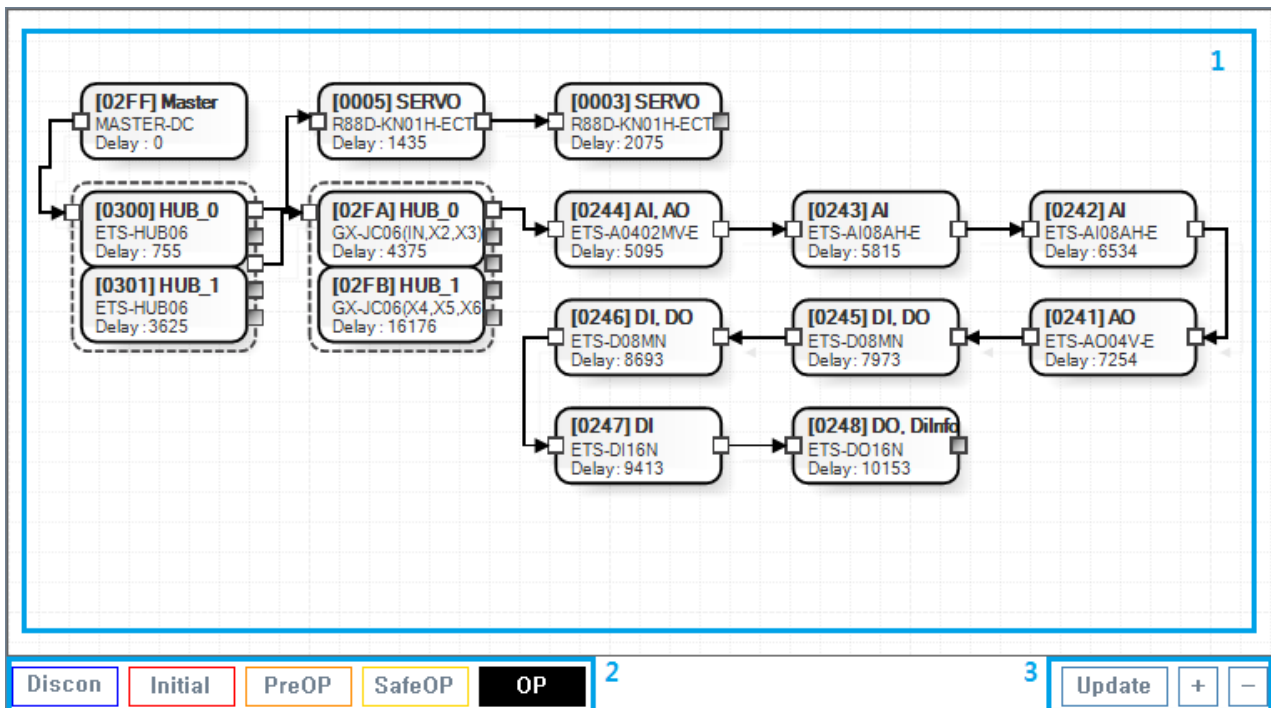
Topology View 1
..... 1
1. Main View 2
2. AI Status Control Panel 4
3. Display Control Panel 4

Topology View

× Configurator Topology View



- Topology

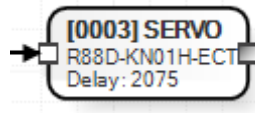


- 1. MainView : Table Line Topology
 - Slave
 - Slave ESC Memory Read / Write / Update
- 2. **AI Status** Control Panel
 - Slave AI Statue

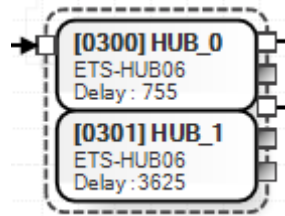
- 3. Display Control Panel
 - MainView

1. Main View

- Table ESC
- Table 가
 - Physical Address (Hexa)
 - SlaveType (Servo / DI / DO)
 - DC Delay
 - Port ,
 - **AI Status**

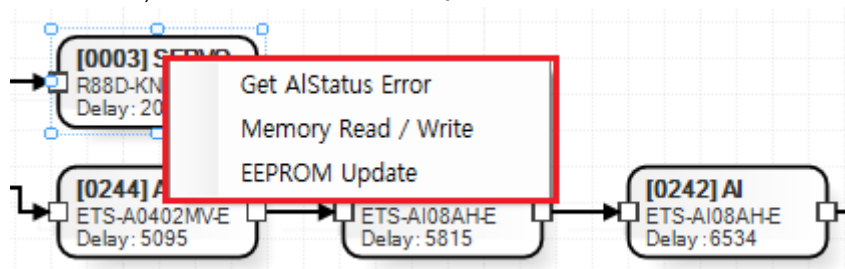


- Physical Address : **0x0003**
- SlaveType : **Servo**
- DC Delay : **2075ns**
- Port : 2 가 Port 1 port(Inport) (Open)
- AIStatus : **OP**
- ESC가 , E-BUS

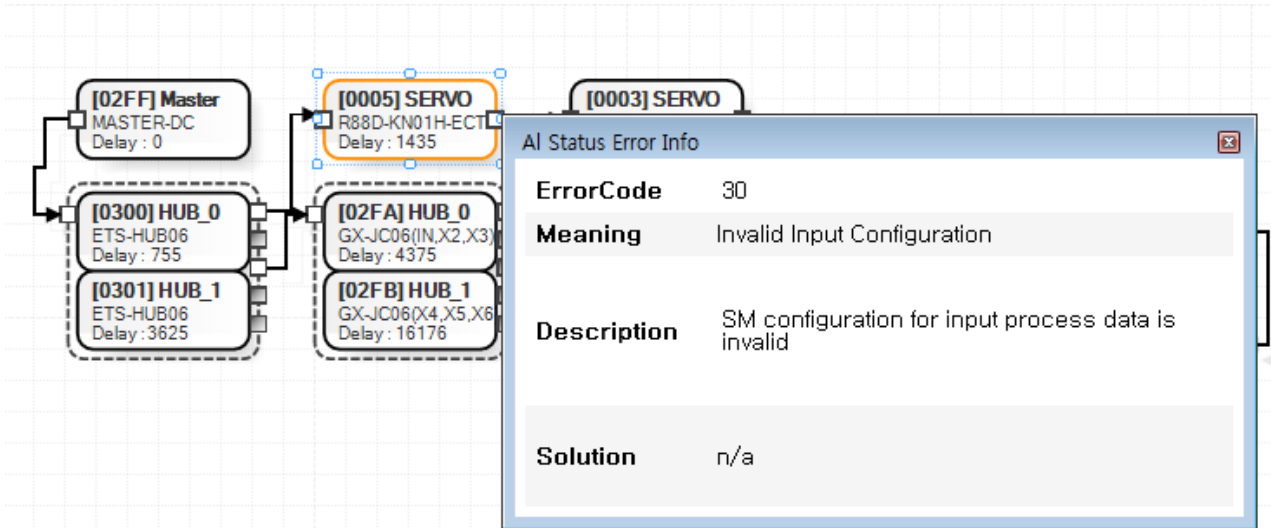


Table

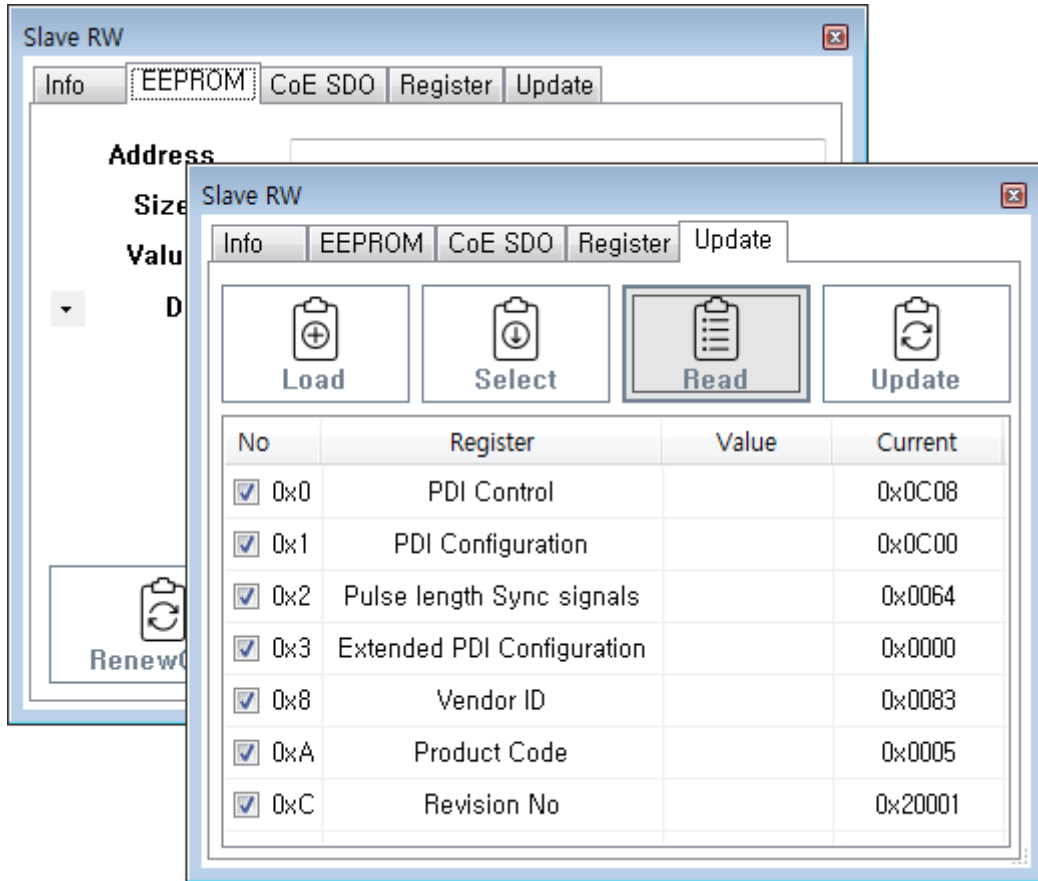
가



- Get AIStatus Error
 - AI Status가 , Error Code



- Memory Read / Write
 - EEPROM, Coe SDO, Register Read / Write
 - **SlaveR/W**
- EEPROM Update
 - EEPROM ConfigData Update
 - **SlaveR/W**



× **Warning!**

EEPROM_READ_FAILED ScanError 가 , Slave Topology가

2. AI Status Control Panel

- Slave AI Status
- Disconnect AI Status가 Disconnect
- AI Status 가 , Get AIStatus Error Error
- AI Status ErrorCode 가 0 , **AI Status**

3. Display Control Panel

- **Update** : MainView

- + : MainView .
- - : MainView .

From:

<https://www.comizoa.com/info/> - -

Permanent link:

https://www.comizoa.com/info/doku.php?id=platform:ethercat:1_setup:10_config:20_desc:10_topologyview&rev=1586438002

Last update: **2024/07/08 18:22**