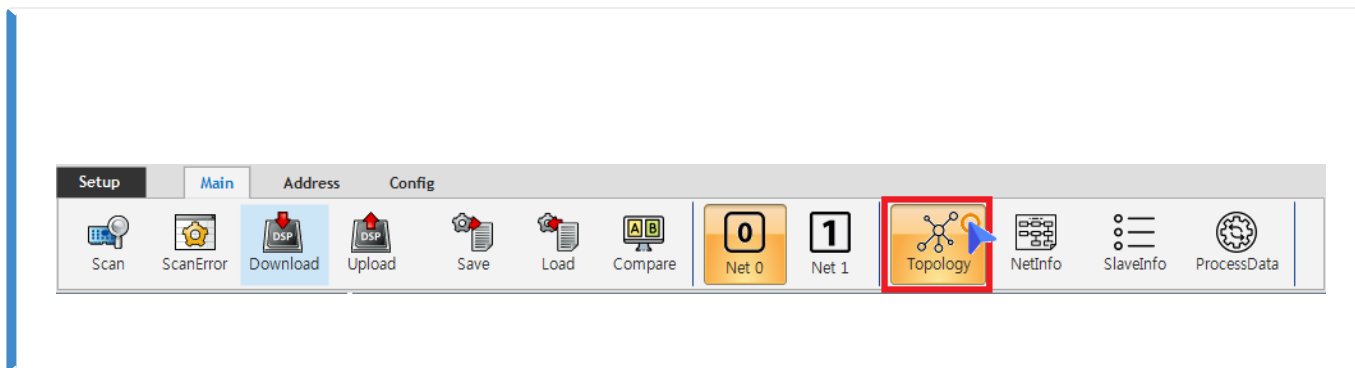


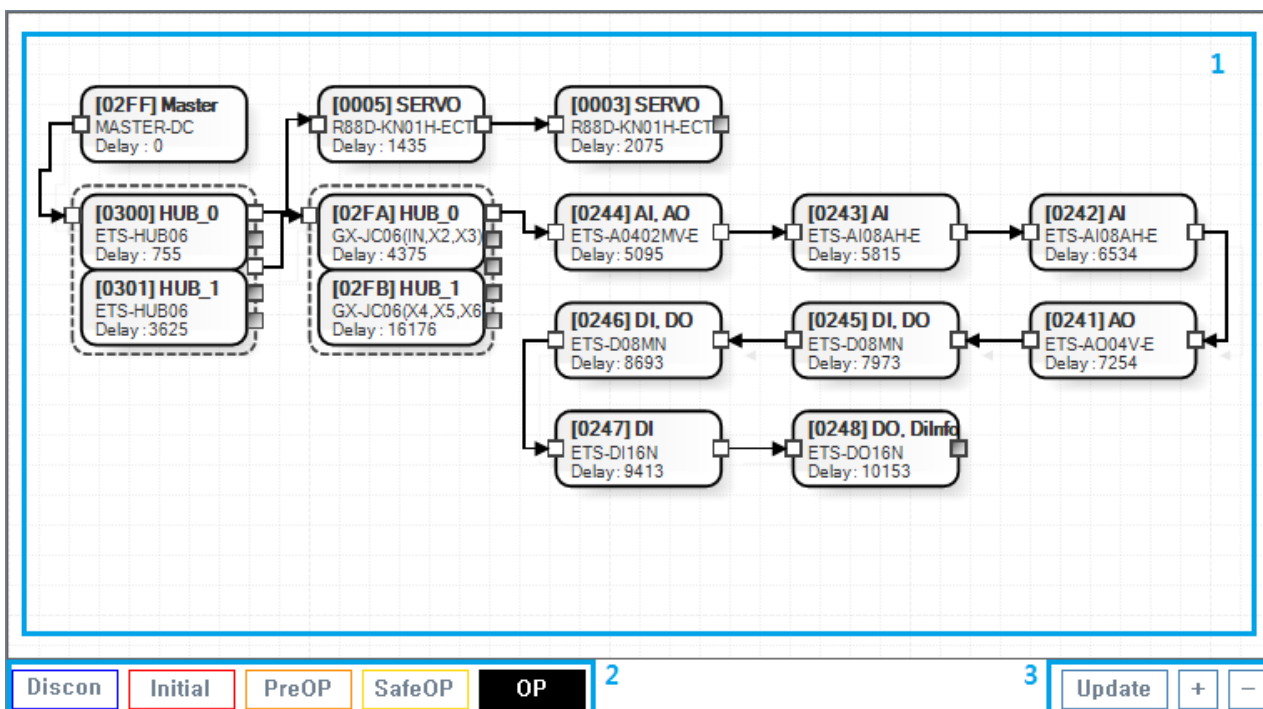
Topology View ..... 1  
..... 1  
..... 1  
Main View ..... 2  
AI Status Control Panel ..... 4  
Display Control Panel ..... 4

# Topology View

× Configurator Topology View



- Topology



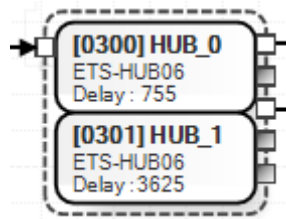
- 1. MainView : Table Line Topology
  - Slave
  - Slave ESC Memory Read / Write / Update
- 2. AI Status Control Panel
  - Slave AI Statue
- 3. Display Control Panel
  - MainView

### Main View

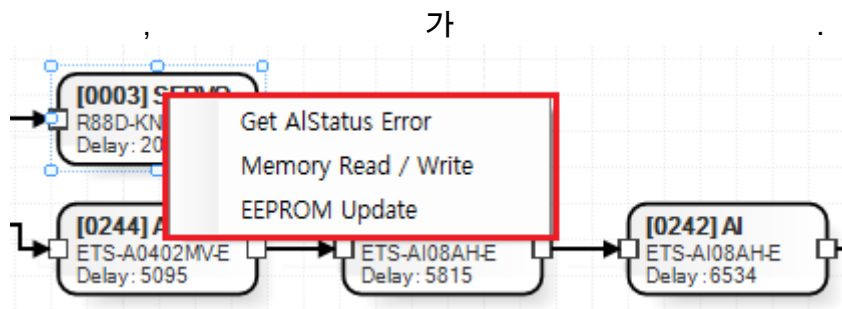
- Table ESC
- Table 가
  - Physical Address (Hexa)
  - SlaveType (Servo / DI / DO )
  - DC Delay
  - Port ,
  - **AI Status**



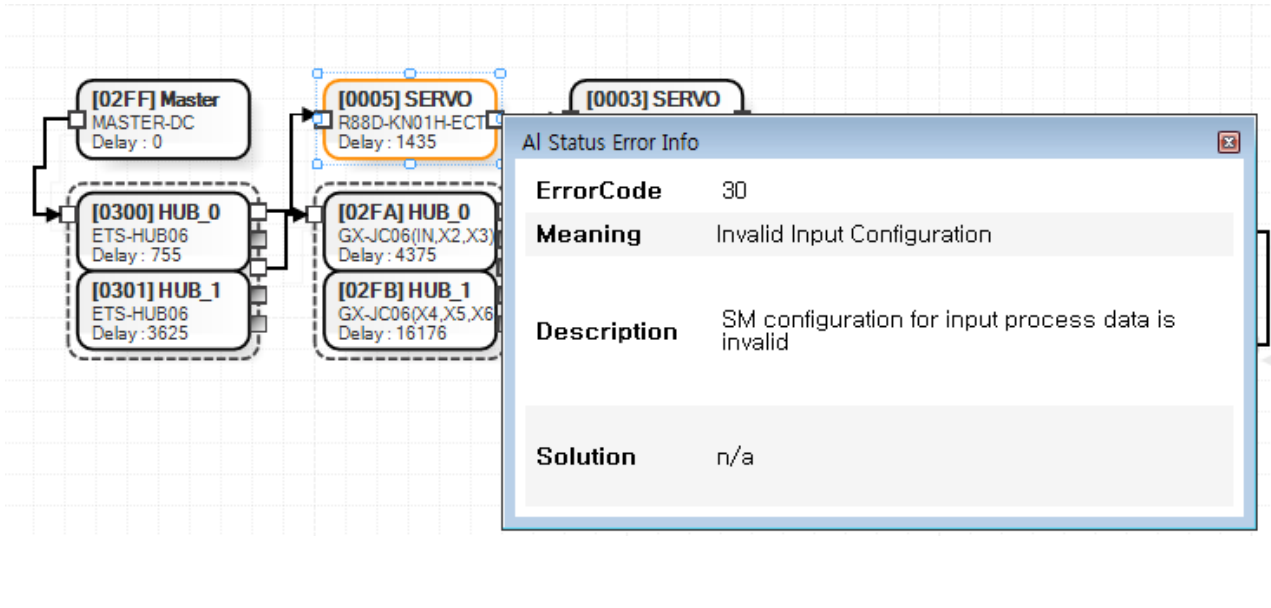
- Physical Address : **0x0003**
- SlaveType : **Servo**
- DC Delay : **2075ns**
- Port : 2 가 Port 1 port(Inport) (Open)
- AIStatus : **OP**
- ESC가 , E-BUS



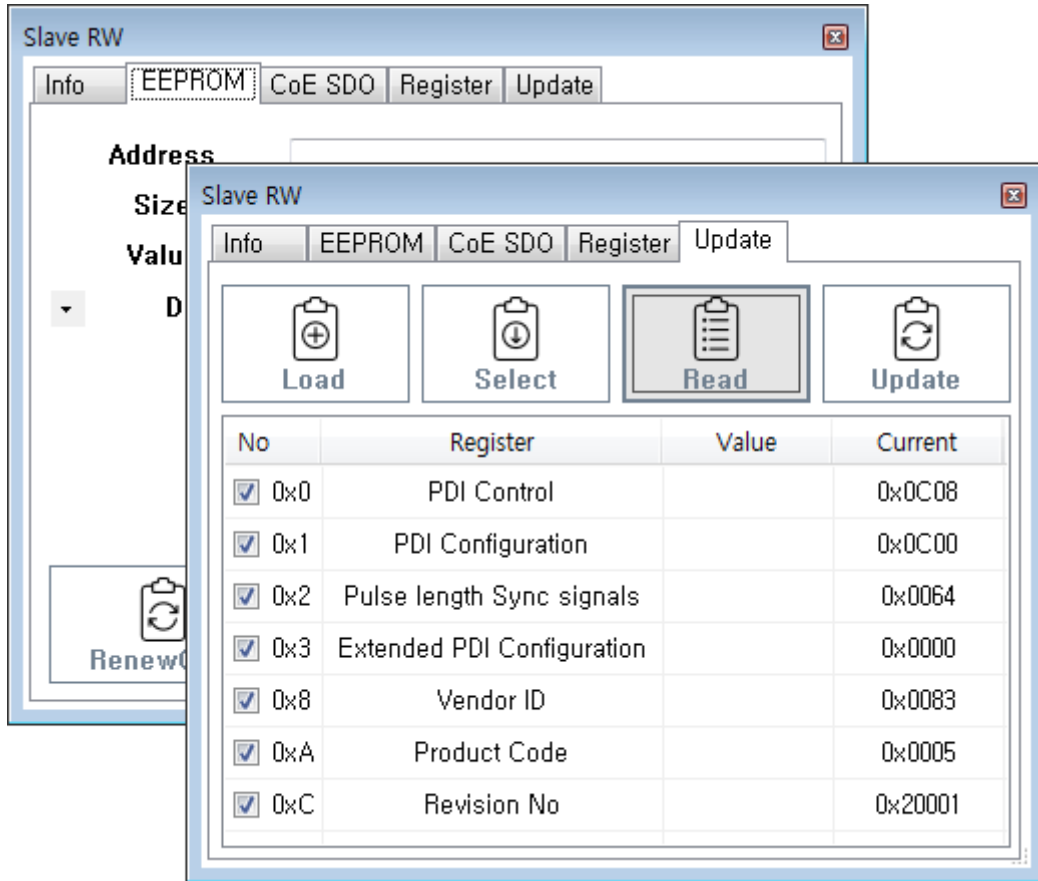
### Table



- Get AIStatus Error
  - AI Status가 , Error Code



- Memory Read / Write
  - EEPROM, Coe SDO, Register Read / Write
  - **SlaveR/W**
- EEPROM Update
  - EEPROM ConfigData Update
  - **SlaveR/W**



× **Warning!**

EEPROM\_READ\_FAILED ScanError 가 , Slave Topology가

**AI Status Control Panel**

- Slave AI Status
- Disconnect AI Status가 Disconnect
- AI Status 가 , Get AIStatus Error Error
- AI Status ErrorCode 가 0 , **AI Status**

**Display Control Panel**

- **Update** : MainView

- + : MainView .
- - : MainView .

From:

<https://www.comizoa.com/info/> - -

Permanent link:

[https://www.comizoa.com/info/doku.php?id=platform:ethercat:1\\_setup:10\\_config:20\\_desc:10\\_topologyview&rev=1587002643](https://www.comizoa.com/info/doku.php?id=platform:ethercat:1_setup:10_config:20_desc:10_topologyview&rev=1587002643)

Last update: **2024/07/08 18:22**