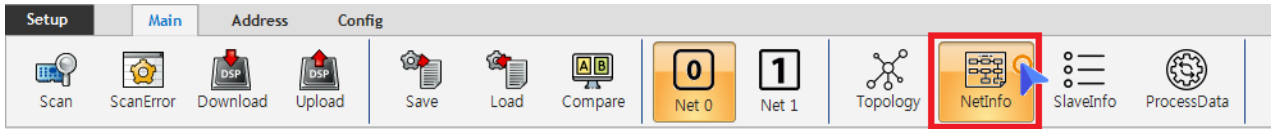


Net Info 1
..... 1
Info 1
Logic Memory Section 3
Channel Map 3

Net Info

× Configurator Net Information Tab



- NetInfo

- Cycle Time
- Redundancy()
- Logic Memory Section
- DI / DO Channel Map
- AI / AO Channel MAP

Info

Info Logic Out Logic In DI/O Channel Map AI/O Channel Map FMMU Driver PDO

Cycle Time

Cycle Time	<input type="text" value="1000"/>	μs (Min : 10μs / Max : 1000μs)
Process Time (Net)	<input type="text" value="60"/>	Cycle time of the DSP-Core0
ProcessTime(App)	<input type="text" value="36"/>	Cycle time of the DSP-Core 1

Data Size

Output	<input type="text" value="27"/>	Byte
Input	<input type="text" value="51"/>	Byte

DC Setup

Dc Offset	<input type="text" value="50000"/>	ns
-----------	------------------------------------	----

Redundancy

Redundancy (링 이중화) 사용

Cycle Time

- Cycle Time
 - Download
 - 가 125 / 250 / 500 / 1000 / 2000 / 4000 , us
 - 32 ¹⁾, 500us 가
 - 16 , 250us 가
 - 8 , 125us 가
 - Process Time
 - Process Time (Net) : DSP-Core 0
 - Process Time (App) : DSP-Core 1
 - Process Time us

× ProcessTime CycleTime

Data Size

- OutPut : Output Data . 2048 Byte
- Input : Input Data . 2048 Byte

DC Setup

- **SyncMode**가 DC-Sync
 - Master EtherCAT Frame
 - 가
 - Frame
 - 가
 - 가
 - 가 (,)
 - Master EtherCAT Frame
 - **DC Offset**
 - ns , 50,000 50us
 - -999,999 ~ 999,999
 - (-) 가 , -50,000 , 50us Frame
 - , DC-Offset
 - Frame 0 가 DC Offset 50,000 , 50us ,
 - 가 , DC-Offset

Redundancy

- , “Redundancy() ” .

Logic Memory Section

Info	Logic Memory Section - Output	Logic Memory - Input	DI/O Channel Map	AI/O Channel Map	
Start Address	Length	Type	Device	No	Alias
DO					
0	1	DO	ETS-D08MN	10	0245
1	1	DO	ETS-D08MN	11	0246
2	2	DO	ETS-D016N	13	0248
AO					
4	4	AO	ETS-A0402MV-E	6	0244
8	8	AO	ETS-A004V-E	9	0241
SERVO					
16	12	SERVO	R88D-KN01H-ECT	2	0005
28	12	SERVO	R88D-KN01H-ECT	3	0003

- (Input/Output) Slave가 Master Slave Frame .

Channel Map

Start Channel	Channel Count	Start L-Address	Start L-Bit	Device	No	Alias
Digital Input Channel Map						
0	8	0	0	ETS-D08MN	10	0245
8	8	2	0	ETS-D08MN	11	0246
16	16	4	0	ETS-DI16N	12	0247
Digital Output Channel Map						
0	8	0	0	ETS-D08MN	10	0245
8	8	1	0	ETS-D08MN	11	0246
16	16	2	0	ETS-DO16N	13	0248

- Slave Type DI / DO / AI / AO Slave Global Channel Map
 - ex) 0x246 ETS-D08MN 8 ~ 15 Global Channel
- Channel Map **IO Channel Mapping**

1)
COMI-LX554 64

From:
<https://www.comizoa.com/info/> - -
 Permanent link:
https://www.comizoa.com/info/doku.php?id=platform:ethercat:1_setup:10_config:20_desc:20_netinfo&rev=1671090772
 Last update: **2024/07/08 18:22**