

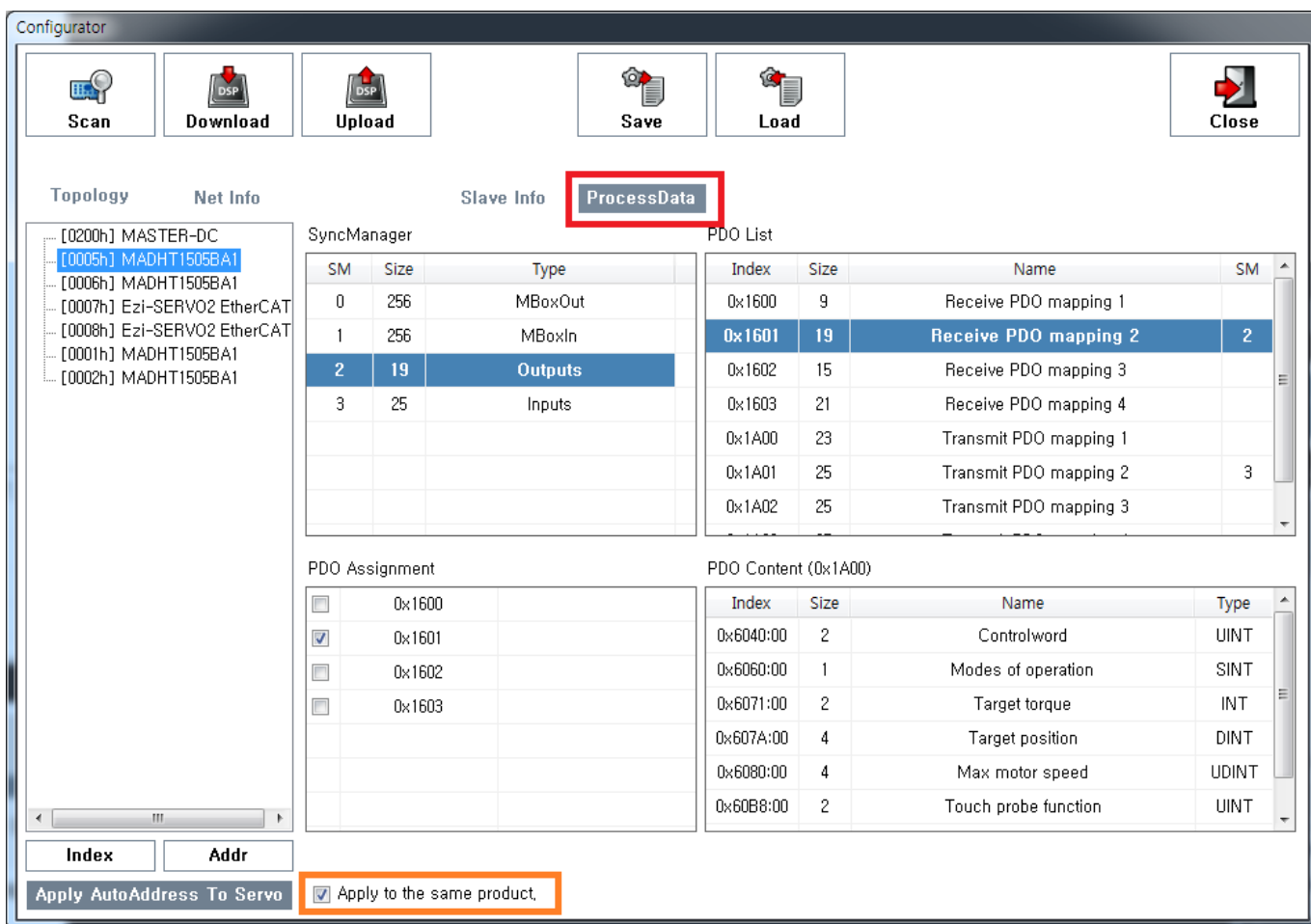
..... 1

Info 4

Process Data (PDO)

x Process Data

- ProcessData



- SyncManager “MBoxOut”, “MBoxIn”
- SyncManager

1)

SyncManager

SM	Size	Type
0	256	MBoxOut
1	256	MBoxIn
2	9	Outputs
3	25	Inputs

PDO List

Index	Size	Name	SM
0x1600	9	Receive PDO mapping 1	2
0x1601	19	Receive PDO mapping 2	
0x1602	15	Receive PDO mapping 3	
0x1603	21	Receive PDO mapping 4	
0x1A00	23	Transmit PDO mapping 1	
0x1A01	25	Transmit PDO mapping 2	3
0x1A02	25	Transmit PDO mapping 3	
0x1A03	25	Transmit PDO mapping 4	

PDO Assignment

<input checked="" type="checkbox"/>	0x1600
<input type="checkbox"/>	0x1601
<input type="checkbox"/>	0x1602
<input type="checkbox"/>	0x1603

PDO Content (0x1A00)

Index	Size	Name	Type
0x6040:00	2	Controlword	UINT
0x6060:00	1	Modes of operation	SINT
0x607A:00	4	Target position	DINT
0x60B8:00	2	Touch probe function	UINT

- “Outputs” ²⁾ (Process Data)
- , 4 PDO (RxPDO)가 0x1600 PDO가
 - 0x1600 PDO Content Controlword, Modes of operation, Target position, TouchProbe function
 - , Torque , Torque
- PDO Assignment RxPDO

SyncManager

SM	Size	Type
0	256	MBoxOut
1	256	MBoxIn
2	19	Outputs
3	23	Inputs

PDO List

Index	Size	Name	SM
0x1600	9	Receive PDO mapping 1	
0x1601	19	Receive PDO mapping 2	2
0x1602	15	Receive PDO mapping 3	
0x1603	21	Receive PDO mapping 4	
0x1A00	23	Transmit PDO mapping 1	3
0x1A01	25	Transmit PDO mapping 2	
0x1A02	25	Transmit PDO mapping 3	
0x1A03	25	Transmit PDO mapping 4	

PDO Assignment

<input type="checkbox"/>	0x1600
<input checked="" type="checkbox"/>	0x1601
<input type="checkbox"/>	0x1602
<input type="checkbox"/>	0x1603

PDO Content (0x1A00)

Index	Size	Name	Type
0x6040:00	2	Controlword	UINT
0x6060:00	1	Modes of operation	SINT
0x6071:00	2	Target torque	INT
0x607A:00	4	Target position	DINT
0x6080:00	4	Max motor speed	UDINT
0x60B8:00	2	Touch probe function	UINT
0x60FF:00	4	Target velocity	DINT

- PDO 0x1601 , 0x1601 PDO Content 가
 - 0x1600 Target torque Max motor speed가 가
 - , Torque 가 가

SyncManager

SM	Size	Type
0	256	MBoxOut
1	256	MBoxIn
2	9	Outputs
3	25	Inputs

PDO List

Index	Size	Name	SM
0x1600	9	Receive PDO mapping 1	2
0x1601	19	Receive PDO mapping 2	
0x1602	15	Receive PDO mapping 3	
0x1603	21	Receive PDO mapping 4	
0x1A00	23	Transmit PDO mapping 1	
0x1A01	25	Transmit PDO mapping 2	3
0x1A02	25	Transmit PDO mapping 3	
0x1A03	25	Transmit PDO mapping 4	

PDO Assignment

<input type="checkbox"/>	0x1A00
<input checked="" type="checkbox"/>	0x1A01
<input type="checkbox"/>	0x1A02
<input type="checkbox"/>	0x1A03

PDO Content (0x1A00)

Index	Size	Name	Type
0x603F:00	2	Error code	UINT
0x6041:00	2	Statusword	UINT
0x6061:00	1	Modes of operation display	SINT
0x6064:00	4	Position actual value	DINT
0x606C:00	4	Velocity actual value	DINT
0x6077:00	2	Torque actual value	INT
0x60B9:00	2	Touch probe status	UINT

- “Inputs” ³⁾ (Process Data)
- , 4 PDO (TxPDO)가 0x1A01 PDO가
 - 0x1A01 PDO Content
 - , PDO Content Torque actual value torque
- PDO List 가 PDO List list , PDO Assignment
- “Apply to the same product” ⁴⁾

Info

- RxPDO TxPDO xml

1) , Data

2)

Data RxPDO

3)

Data TxPDO

4)

VendorID ProductCode가

From:

<https://www.comizoa.com/info/> - -

Permanent link:

https://www.comizoa.com/info/doku.php?id=platform:ethercat:1_setup:10_config:20_desc:40_processdata&rev=1542868116

Last update: **2024/07/08 18:22**