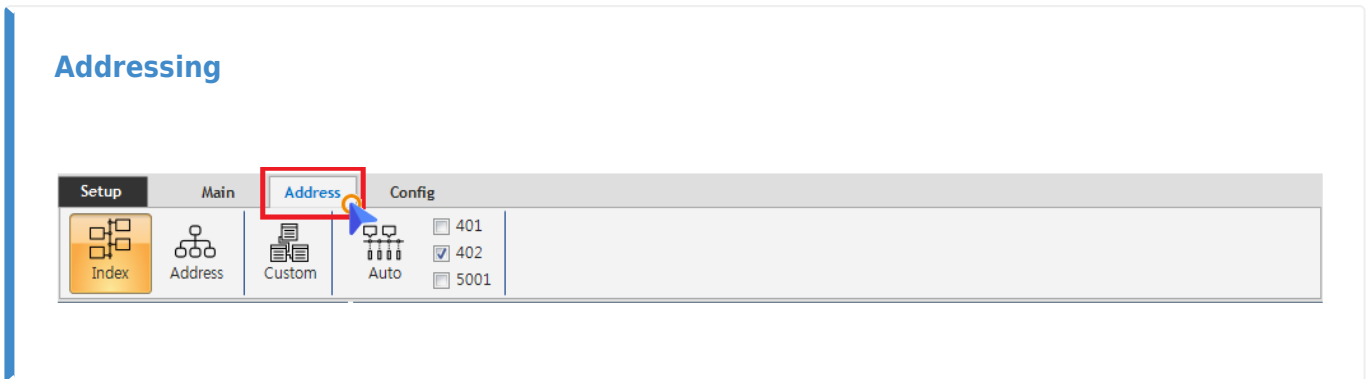


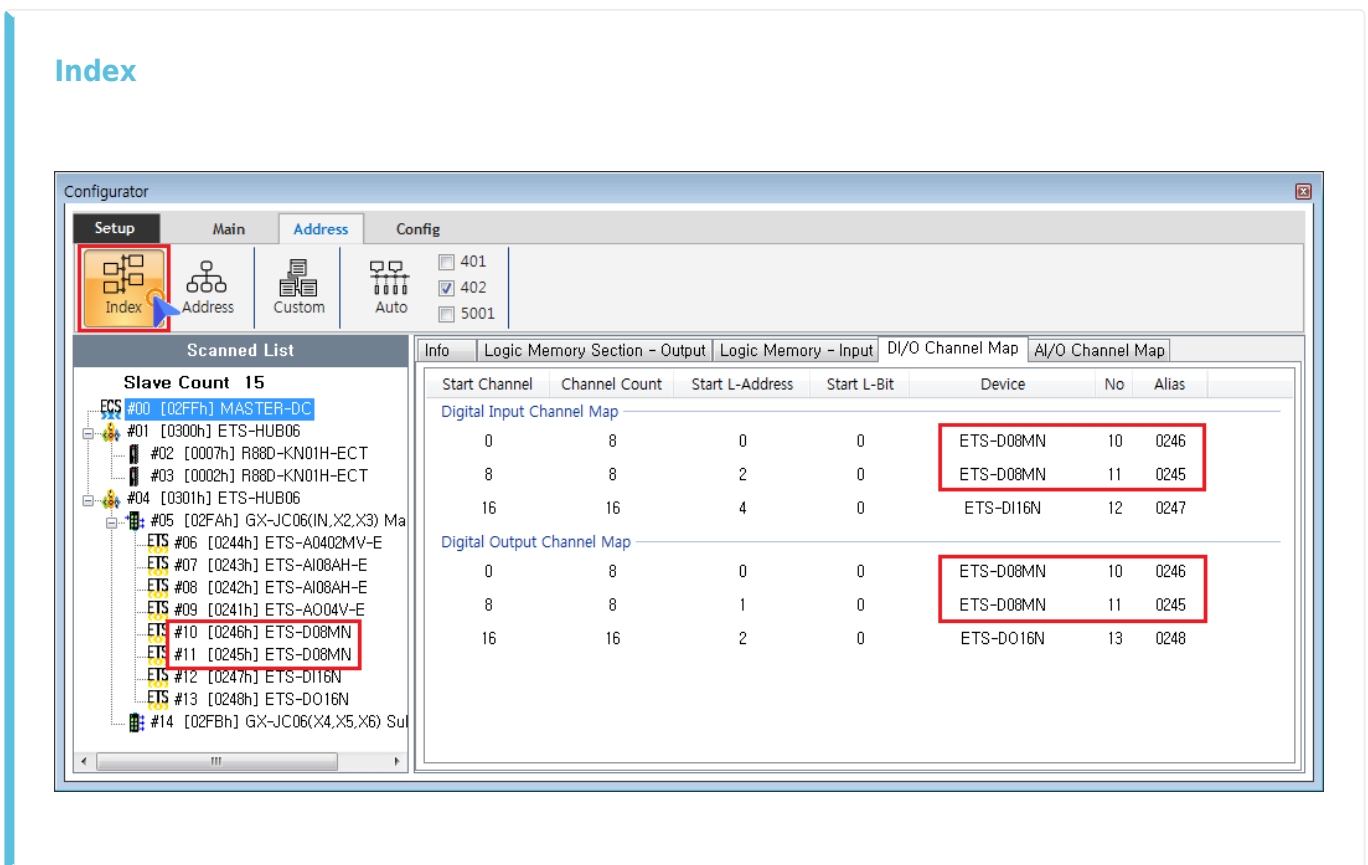
Addressing ..... 1  
Index ..... 1  
Address ..... 2  
Custom ..... 2  
Auto ..... 4

# Addressing

x Slave Mapping



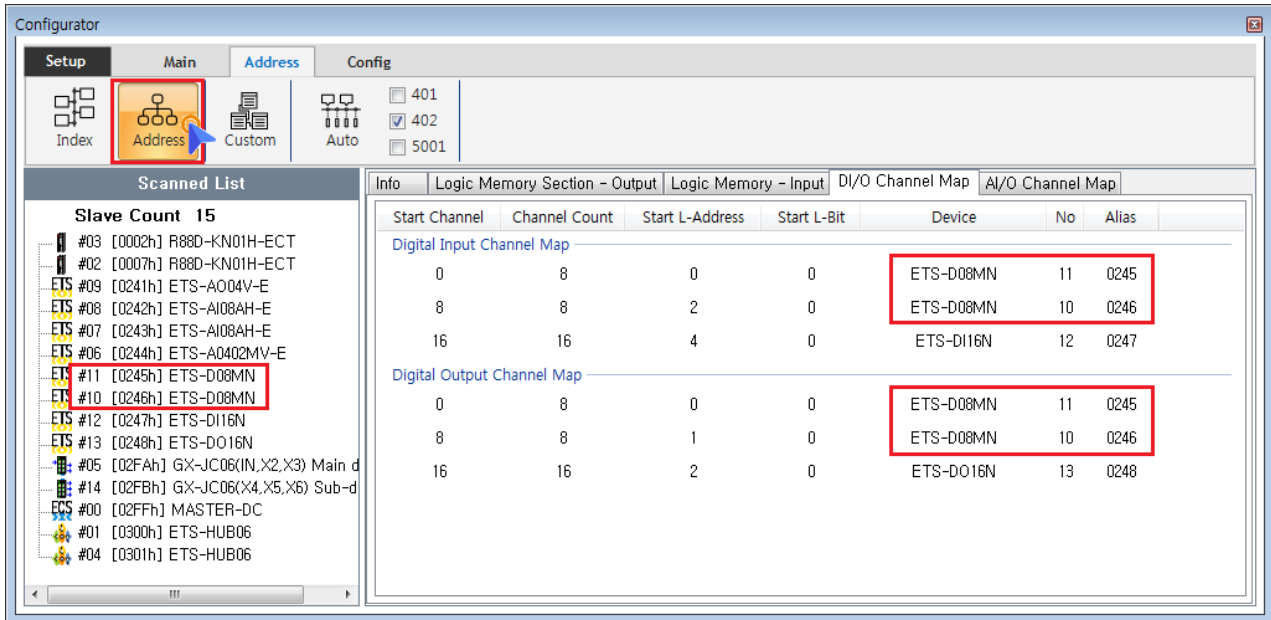
- Index : Mapping
- Address : Mapping
- Custom : User Define Mapping
- Auto : Device Type



- Index 가
- IO ,

- 10                    ETS-D08MN (0x246)            0 ~ 7            Global Channel
- 11                    ETS-D08MN (0x245)            8 ~ 15            Global Channel

### Address



#### • Address

가

#### • IO

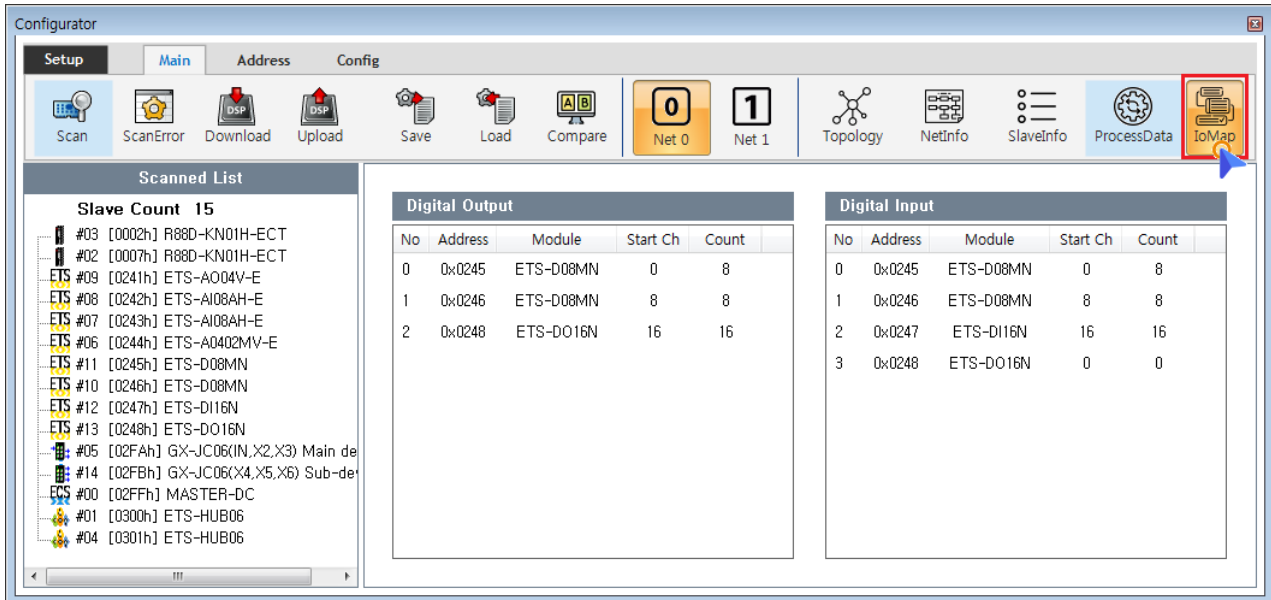
- 0x245            가    ETS-D08MN            0 ~ 7            Global Channel
- 0x246            가    ETS-D08MN            8 ~ 15            Global Channel

### Custom

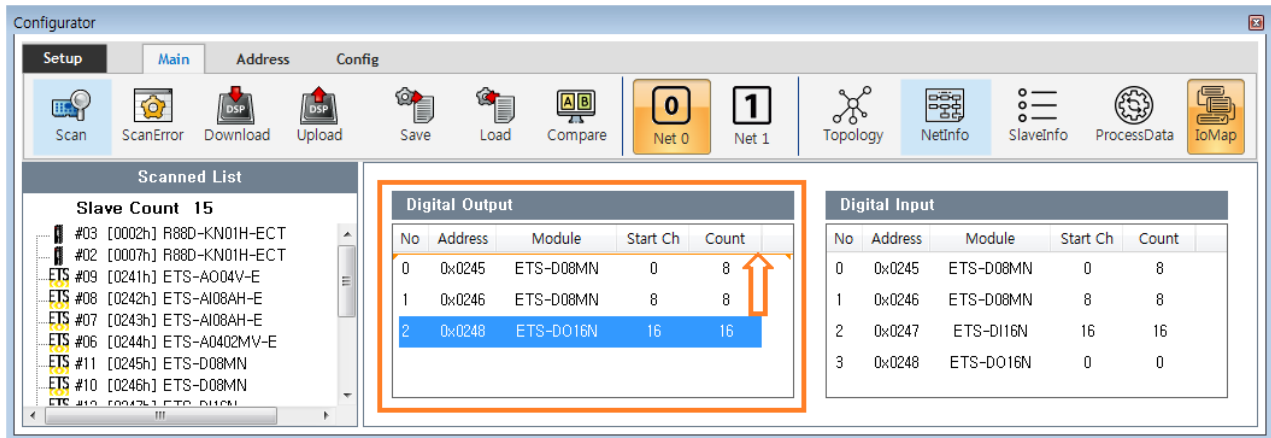


#### • Custom

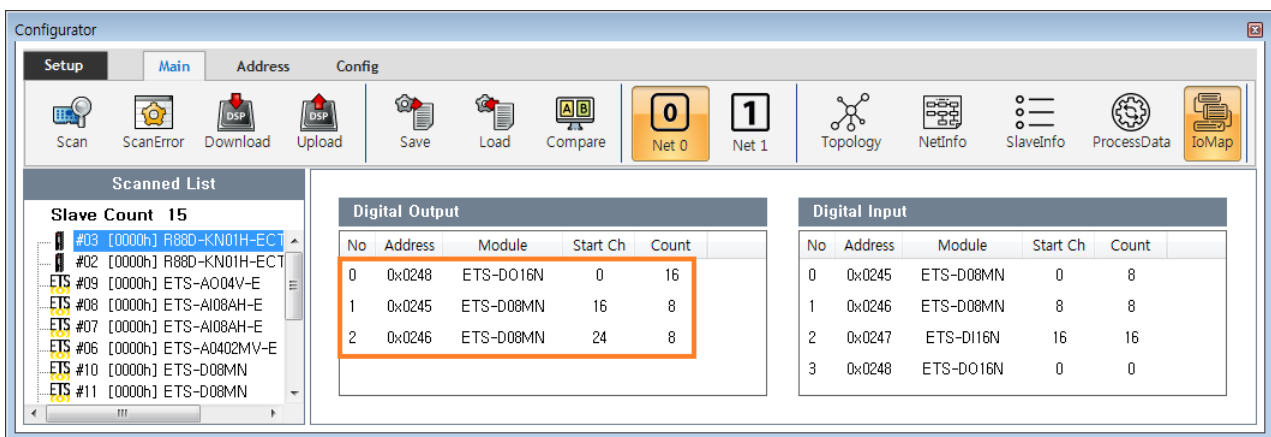
User Defined Map



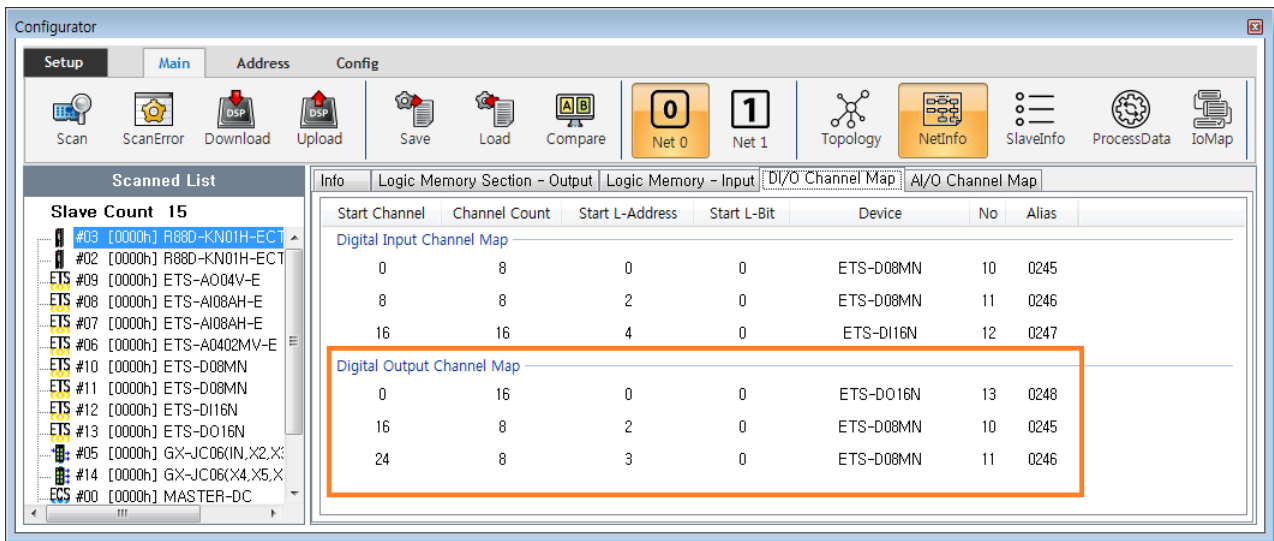
• Custom Main IoMap



• Item Drag Map

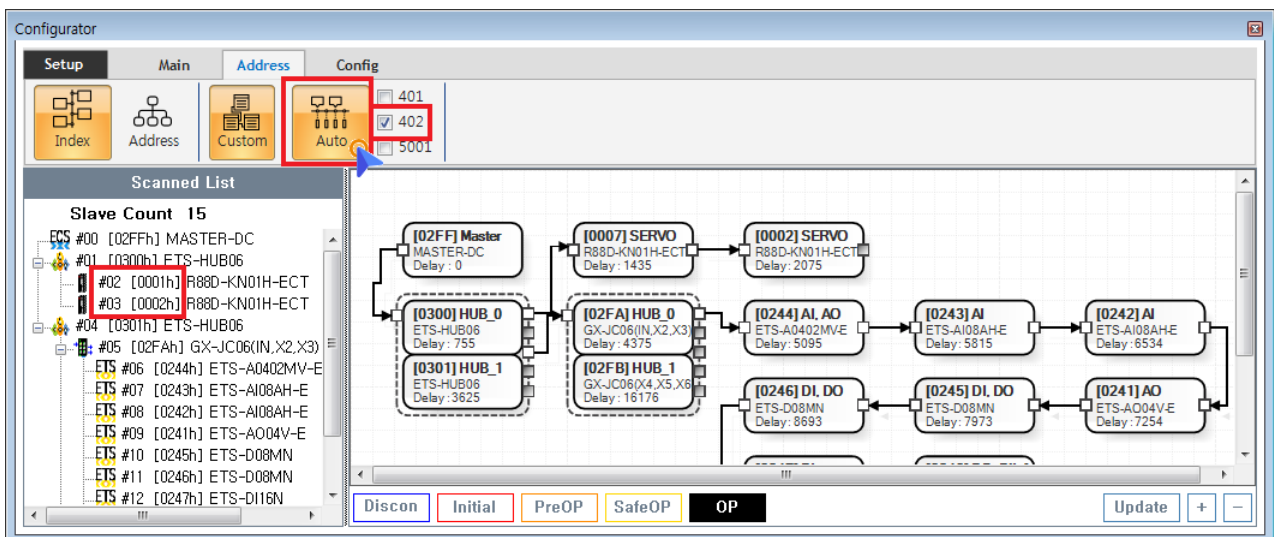


- Drop Map Channel



- Channel Map

### Auto



- Check ProfileType<sup>1)</sup>
  - 401 Profile Driver Address가

- 1
- DeviceID Switch
- [Station Alias Selection](#)

1)

401 MocoController가 IO, 402 Driver, 5001

From:

<https://www.comizoa.com/info/> - -

Permanent link:

[https://www.comizoa.com/info/doku.php?id=platform:ethercat:1\\_setup:10\\_config:20\\_desc:50\\_addressing&rev=1586761170](https://www.comizoa.com/info/doku.php?id=platform:ethercat:1_setup:10_config:20_desc:50_addressing&rev=1586761170)Last update: **2024/07/08 18:22**