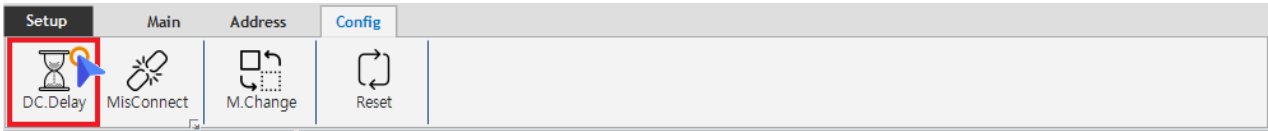


Distributed Clock Delay 1
DC Delay 1

Distributed Clock Delay

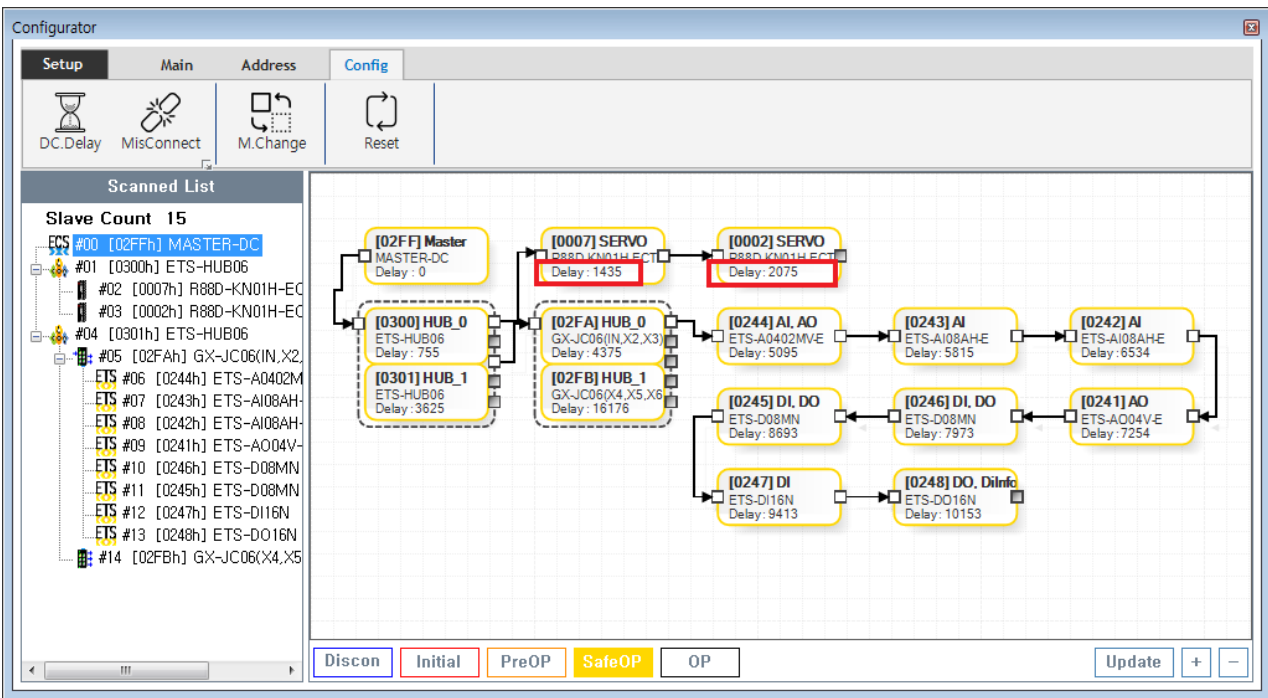
× DC¹⁾-Sync Mode

Delay Time

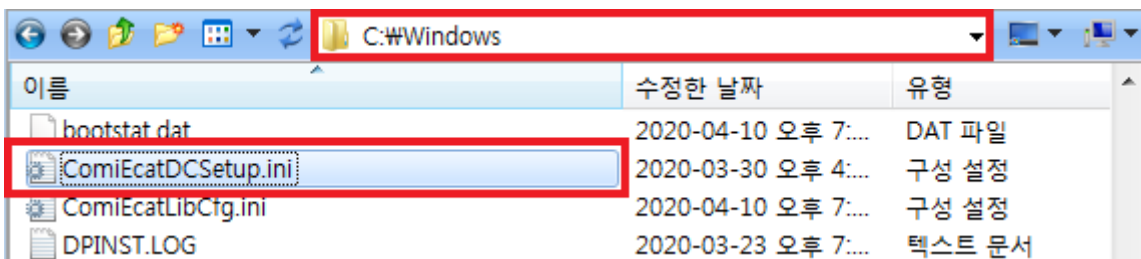


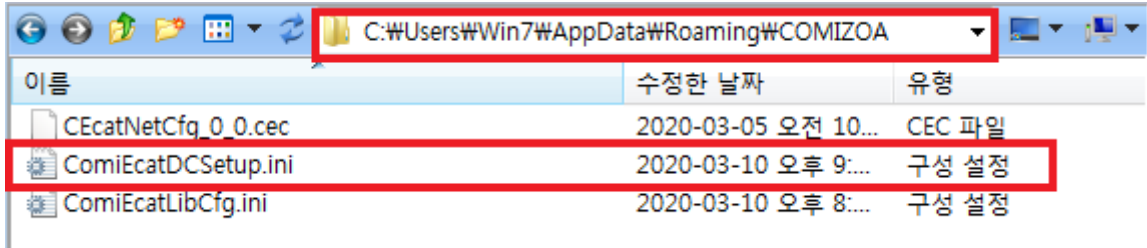
- **Config Tab DC.Delay**
- **DC Sync** Slave

DC Delay



- TopologyView Table Delay가 ns





- 'c:\windows' 'C:\Users\Win7\AppData\Roaming\COMIZOA'
- 'ComiEcatDCSetup.ini' .'

```
[NET1_DC_DELAY]
NumSlaves=20
slave000=767, 0, 735, 0, 0, 0
slave001=768, 735, 720, 135, 0, 735
slave002=580, 720, 699, 0, 0, 1455
slave003=579, 699, 740, 0, 0, 2154
slave004=578, 740, 719, 0, 0, 2894
slave005=577, 719, 740, 0, 0, 3613
slave006=581, 740, 720, 0, 0, 4353
slave007=582, 720, 719, 0, 0, 5073
slave008=583, 719, 720, 0, 0, 5792
slave009=584, 720, 720, 0, 0, 6512
slave010=586, 720, 720, 0, 0, 7232
slave011=585, 720, 720, 0, 0, 7952
slave012=588, 720, 740, 0, 0, 8672
slave013=587, 740, 0, 0, 0, 9412
slave014=769, 135, 0, 0, 669, 18324
slave015=2, 669, 640, 0, 0, 18993
slave016=1, 640, 680, 0, 0, 19633
```

- Slave , Port Receive Time .
- Slave Disconnect Topology가
 - Slave delay가 .
 - Delay .

Slave RW

08 : [0242] ETS-AI08AH-E

- 00 : [02FF] MASTER-DC
- 01 : [0300] ETS-HUB06
- 02 : [0007] R88D-KN01H-EC
- 03 : [0002] R88D-KN01H-EC
- 04 : [0301] ETS-HUB06
- 05 : [02FA] GX-JC06(IN,X2)
- 06 : [0244] ETS-A0402MV-E
- 07 : [0243] ETS-AI08AH-E
- 08 : [0242] ETS-AI08AH-E
- 09 : [0241] ETS-A004V-E
- 10 : [0246] ETS-D08MN
- 11 : [0245] ETS-D08MN
- 12 : [0247] ETS-DI16N

Info EEPROM CoE SDO Register Update

Type Port 3 0

ET1100

Port 0 719

Port 1 720

Port 2 0

Loop Open

Comm. Estab

Index Order ID Order

- Port ReceiveTime Slaves 가 .

1)

Distributed Clock

From: <https://www.comizoa.com/info/> - -

Permanent link: https://www.comizoa.com/info/doku.php?id=platform:ethercat:1_setup:10_config:20_desc:60_dcdelay&rev=1587032591

Last update: 2024/07/08 18:22