

DSP\_NOT\_RUNNING ..... 1  
ESI\_FILE\_NOT\_FOUND ..... 1  
EEPROM\_READ\_FAILED ..... 1  
REVISIONNO\_NOT\_MATCH ..... 1  
SLOT\_SCAN\_FAILED ..... 3  
ALIAS\_DUPLICATED ..... 3  
REVERSE\_CONNECTED\_SLAVE ..... 3  
ALSTATE\_NOT\_INIT ..... 4

# SCAN Error

× Configuration SCAN

Error

.

## DSP\_NOT\_RUNNING

- Master DSP(Fimrware)가 .
- PC .

## ESI\_FILE\_NOT\_FOUND

- **ESI File(.xml)** .
- ESI <sup>1)</sup> .\ComiIDE\Data\Xml , Configurator .

## EEPROM\_READ\_FAILED

- EEPROM VendorID, ProductCode, RevisionNO  
  - ESI File(.xml)
- SCAN .

## REVISIONNO\_NOT\_MATCH

- - ESI ESI File(.xml) RevisionNo 가 <sup>2)</sup> .



- RevisionNo SlaveInfo Tab RevisionNo



- ESI "RevisionNo" Device Type Node 가
- RevisionNo가 Device 가 ESI 3) '\\ComiIDE\Data\Xml' , Configurator

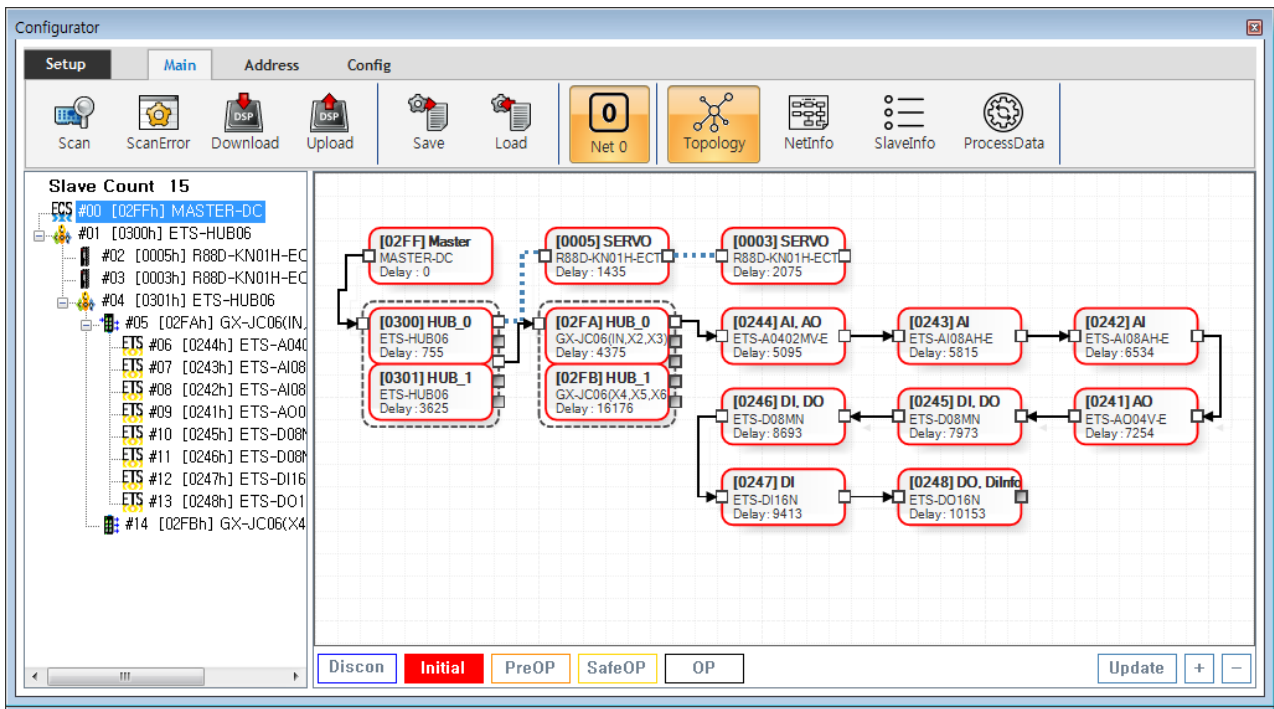
### SLOT\_SCAN\_FAILED

- MDP Profile
  - ProcessData 가 , Master OP Status
  - Download , PDO Data가
- SlotInfo Slot 가

### ALIAS\_DUPLICATED

- 가 가
- 

### REVERSE\_CONNECTED\_SLAVE



- InPort OutPort 가

- TopologyView .
- In/Out Port .
- Port 가 , / Port가 InPort .

### ALSTATE\_NOT\_INIT

- AI Status 가 Initial
- AI Status 가 Initial , EEPROM Read Failed
- , Scan .

1)

2)

SW(Firmware ) RevisionNo

3)

From:

<https://www.comizoa.com/info/> - -

Permanent link:

[https://www.comizoa.com/info/doku.php?id=platform:ethercat:1\\_setup:10\\_config:ts:10\\_scan\\_error&rev=1586178994](https://www.comizoa.com/info/doku.php?id=platform:ethercat:1_setup:10_config:ts:10_scan_error&rev=1586178994)

Last update: **2024/07/08 18:22**