

OP 1

 AIStatus Error 1

 Address 1

 Configuration 1

 Empty Slot 2

 SyncManager Disabled 2

 Object PDO Assign Failed 2

 SlaveListMode 3

OP

× AIState가 OP-State

AIStatus Error

- Slave가 OP
 - **AI Status Error**
-

Address

- Slave Address ,
- Slave Address Slave 가
- , EtherCAT Master가 Address¹⁾ Slave ²⁾가
- Slave

Configuration

- x64 OS 'ComiECatConfig_x64' Configuration x86 Application
- x64 OS 'ComiECatConfig_x64' Configuration ,
 - CecatNetCfg_#_#.cec³⁾ C:\Windows\System32
- x86 Application c:\Windows\SysWow64
 - x64 Application C:\Windows\System32
- Configuration 가 OP
 - Configuration DeviceLoad Master Device Load x64 Application , x86 Application

- ComilDE Configuration .
- 'ComiECatConfig_x86' Configuration .
- 'ComiECatConfig_x64' Configuration . 'CEcatNetCfg_#_#.cec'
c:\Windows\SysWow64 C:\Windows\System32

Empty Slot

- MDP Type Slave Slot Module 가
- **Slot Module** 가

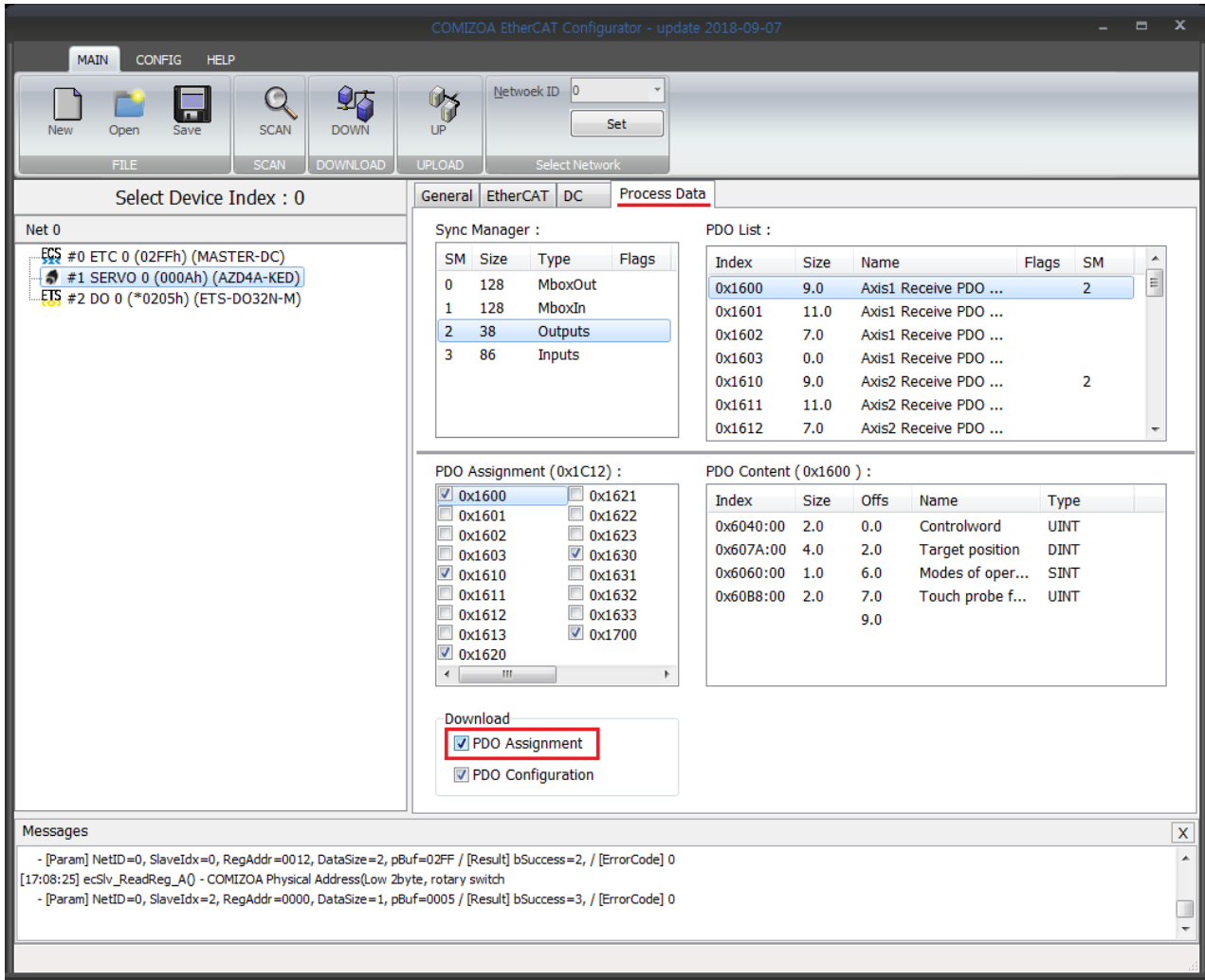
SyncManager Disabled

SyncManager Disabled

- SyncManager가 Enable
- **LS MECAPION : SafeOP**

Object PDO Assign Failed

- PDO Assign



- EcatConfig PDO Assignment .

```

<Mailbox DataLinkLayer="1">
  <CoE SdoInfo="1" PdoAssign="1" PdoConfig="1" CompleteAccess="0" SegmentedSdo="1" DiagHistory="1">
    <InitCmd>
      <Transition>PS</Transition>
      <Index>#x6060</Index>
      <SubIndex>0</SubIndex>
      <Data>08</Data>
    </InitCmd>
  </CoE>
</Mailbox>

```

- xml : PdoAssign="0" → PdoAssign="1"

SlaveListMode

- ComiEcatConfig 가 , OP
- EcatConfig(2016/03/07) SlaveListMode “ ”
 - Addressing , Scan Index
- 'ComiIDE' Configuration .
- 2016/03/07 EcatConfig .
- 2016/03/07 'EcatConfig' “ ”

1)

2)

3)

Configuration

From:

<https://www.comizoa.com/info/> - -

Permanent link:

https://www.comizoa.com/info/doku.php?id=platform:ethercat:1_setup:10_config:ts:30_safeop_failed&rev=1624501766

Last update: **2024/07/08 18:22**