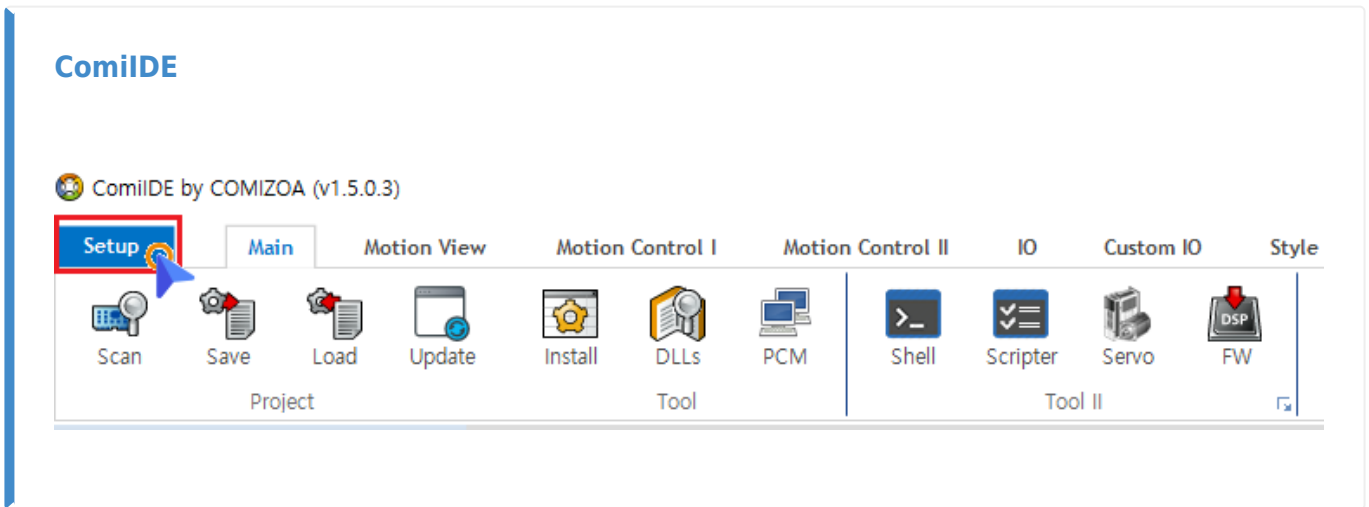
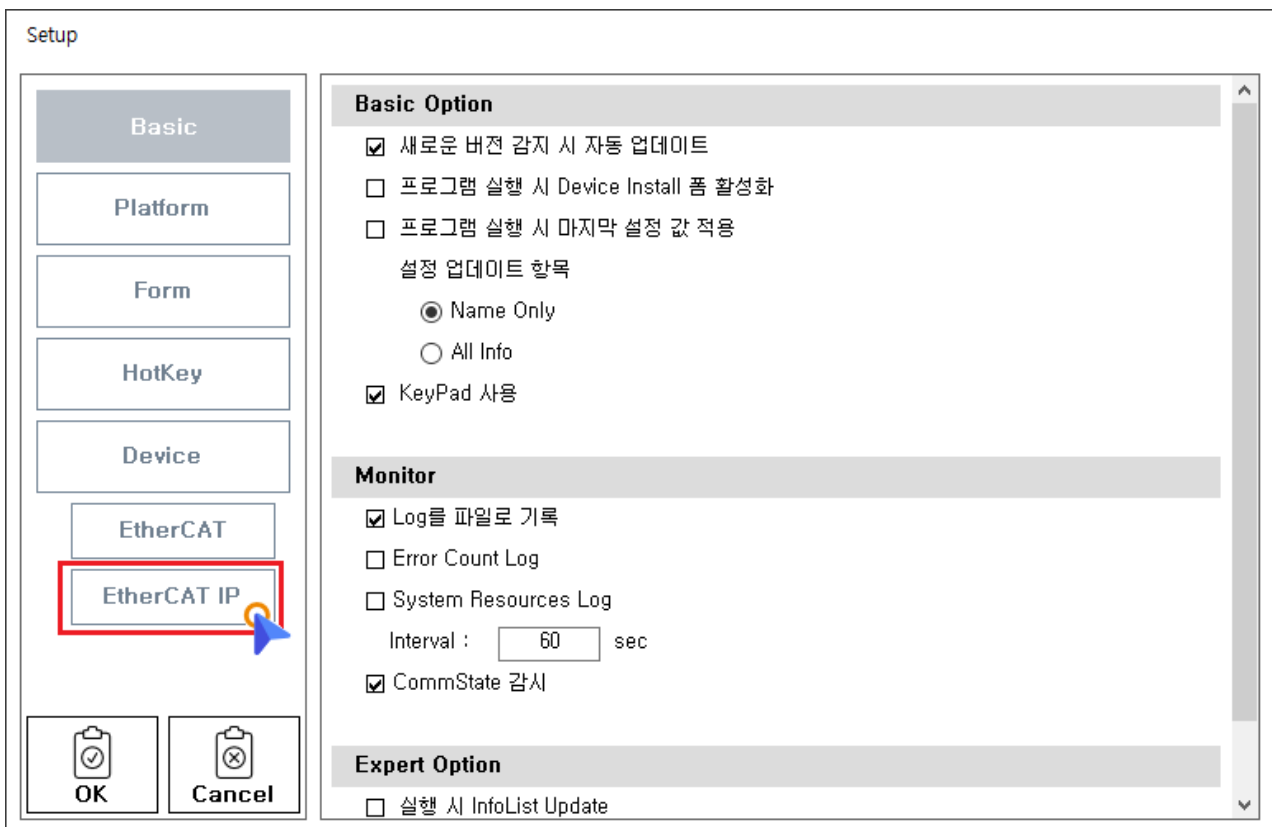


.....	1
ComilDE .....	1
ini .....	3

### × StandAlone EtherCAT



- ComiIDE , Setup



- EtherCAT IP

Setup

Basic

Platform

Form

HotKey

Device

EtherCAT

EtherCAT IP

OK Cancel

**Mode**

StandAlone EtherCAT 사용

Simulation Mode 사용

DC Delay 4000

**Control Message Setup**

Local IP 192,168,1,49

Daemon IP 192,168,1,49

Daemon Port L 55000

Daemon Port M 5000

RX TimeOut L 3000

RX TimeOut M 2000

Comm Retry Count 0

**IO Message Setup**

Master IP 192,168,1,100

InPort 35040

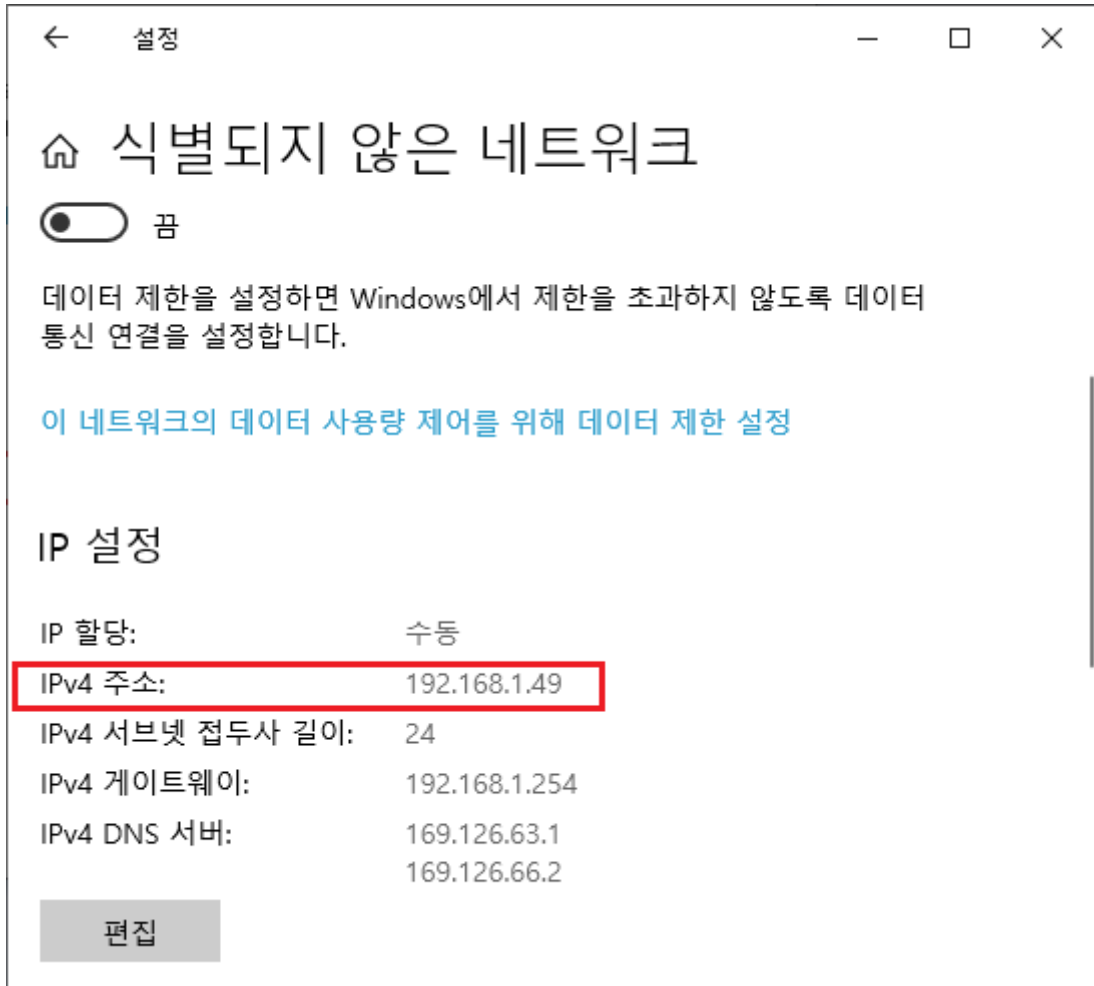
OutPort 35041

- **StandAlone EtherCAT**

- , PCI Type EtherCAT Master .

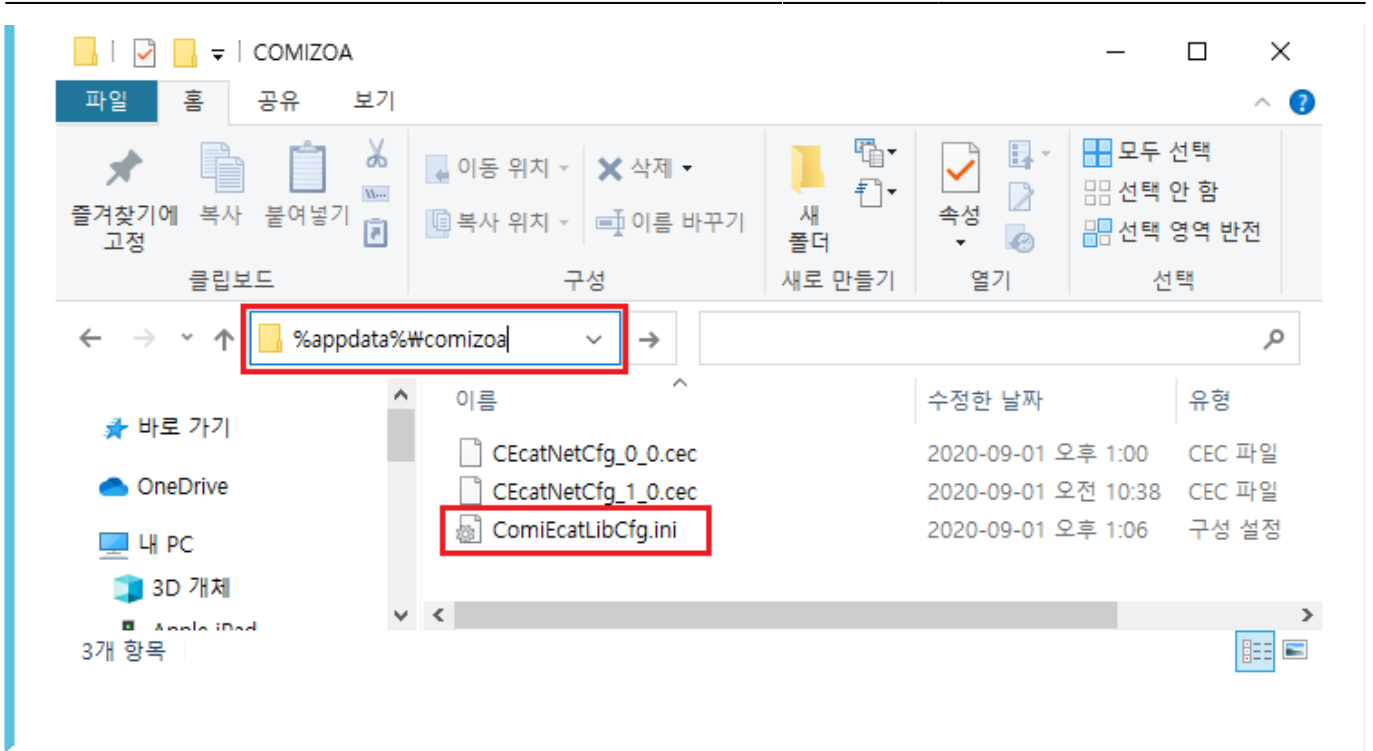
- Local IP, Daemon IP

- Local IP Daemon IP PC IP .



- Master IP
  - Master IP StandAlone EtherCAT Master IP
  - 192.168.1.100

ini



- ..\AppData\Roaming\COMIZOA\ComiEcatLibCfg.ini
  - %appdata%\comizoa

```
1
2 [DEBUG LOGGING]
3 LogType=3
4 LogLevel=2
5 LogFilePath=D:\10_Project\ComiIDE\ComiIDE\bin\Debug\Logs\log_200827_160
6 ErrLogType=0
7 Exclude=
8 Include=
9 [MEMORY LOG OPTIONS]
10 MemorySize (KB)=400000
11
12 [LIB_TUNES]
13 DC Setup Delay=4000
14 EmbeddedMode=1
15 SimulationMode=0
16
17 [CONTROL MSG COMM]
18 LOCAL_IP =192.168.1.49
19 DAEMON_IP =192.168.1.49
20 DAEMON_PORT_L =55000
21 DAEMON_PORT_M =5000
22 RX_TIMEOUT_L =3000
23 RX_TIMEOUT_M =2000
24 COMM_RETRY_NUM =0
25
26 [LIO MSG COMM]
27 MASTER_IP =192.168.1.100
28 IN_PORT =35040
29 OUT_PORT =35041
30
```

- 'EmbeddedMode' 1 .
- 'Local\_IP', 'Daemon\_IP' PC IP .
- 'Master\_IP' , 'Master\_IP' .

From:

<https://www.comizoa.com/info/> - -

Permanent link:

[https://www.comizoa.com/info/doku.php?id=platform:ethercat:1\\_setup:20\\_ip:10\\_begin&rev=1598958357](https://www.comizoa.com/info/doku.php?id=platform:ethercat:1_setup:20_ip:10_begin&rev=1598958357)

Last update: **2024/07/08 18:22**