

---

<b>Case 1</b> .....	1
AddInfo .....	1
Cause .....	1
Solution .....	1
Config Info .....	2
<b>Case 2</b> .....	2
AddInfo .....	2
Cause .....	2
Solution .....	3
<b>Case 3</b> .....	3
AddInfo .....	3
Cause .....	3
Solution .....	3
<b>Case 4</b> .....	3
AddInfo .....	3
Cause .....	3
Solution .....	4

, , torque, , ,

× 가 .

## Case 1

### AddInfo

(Cyclic Torque Mode)

Target Torque

가

가 .

### Cause

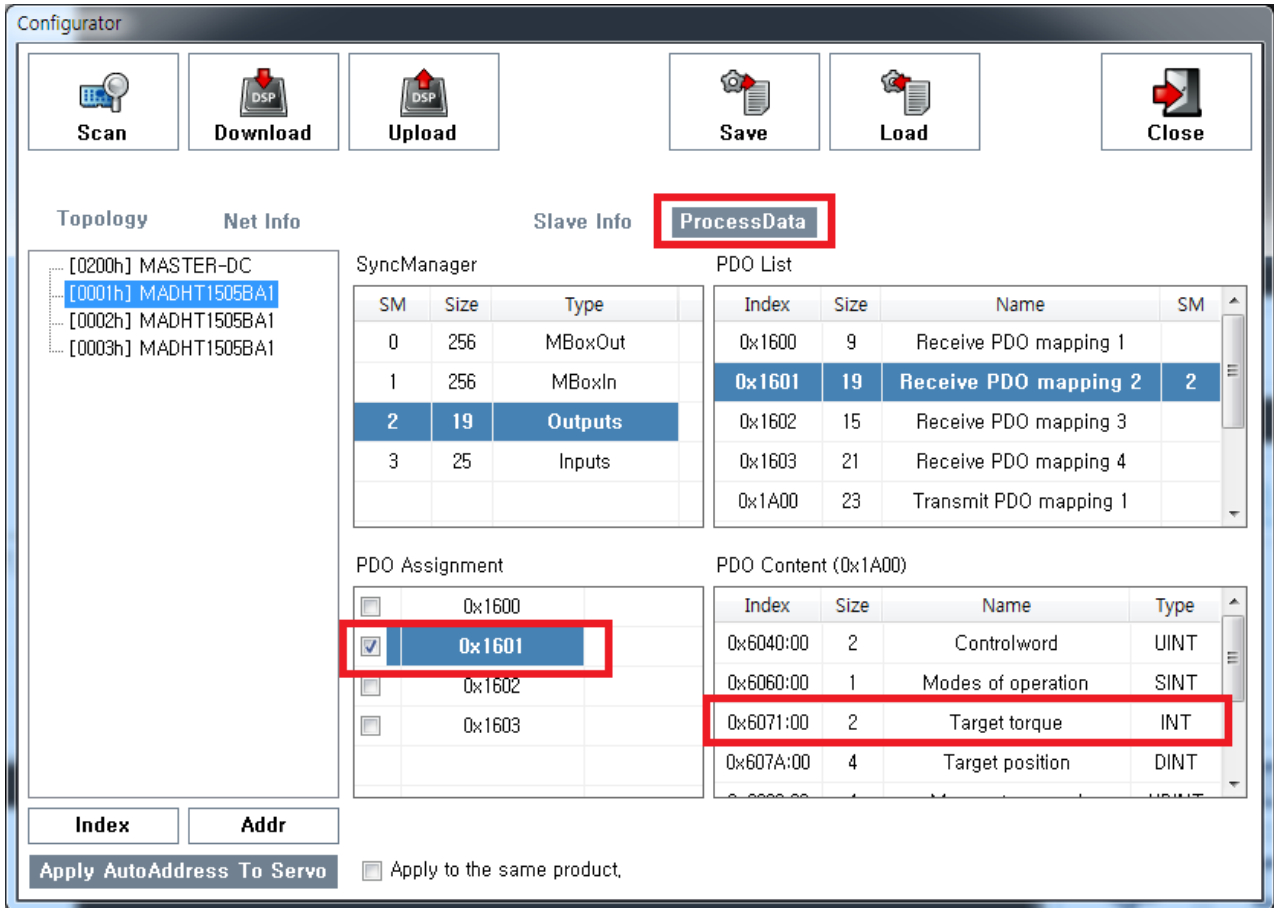
- OutPDO Data Torque

- [1\)](#)

### Solution

- OutPDO Data Torque
  - Torque

가  
PDO Map



- Config

### Configuration Guide

- XML

. (OMRON xml )

- Torque Monitor가

### Torque Monitor Failed

×  
Config Info



## Case 2

### AddInfo

- 

### Cause

- SDO 0x6080 (Max motor speed) 0

2)

### Solution

- SDO 0x6080 (Max motor speed)
- rpm

## Case 3

### AddInfo

- 

### Cause

- Pr0.00 0
- 
- , 0x607E  
(Polarity)<sup>3)</sup>

### Solution

- Pr0.00 0

## Case 4

### AddInfo

- 

### Cause

- Pr0.08 0
- **PANASONIC :**

## Solution

- Pr0.08      0

1)

PDO

2)

Omron                      0x607F (Max Profile Speed)

3)

No Reverse : 0 / Reverse : 224

From:

<https://www.comizoa.com/info/> - -

Permanent link:

[https://www.comizoa.com/info/doku.php?id=platform:ethercat:70\\_users\\_guide:20\\_ts:torque\\_failed&rev=1542700587](https://www.comizoa.com/info/doku.php?id=platform:ethercat:70_users_guide:20_ts:torque_failed&rev=1542700587)

Last update: **2024/07/08 18:22**