

Table of Contents

- 0. ETS-AI08H-E Range Mode Setting** 1
- 1. ComilDE Dictionary 이용** 1
 - 1. ComilDE Dictionary 버튼 클릭 1
 - 2. 변경하고자 하는 슬레이브 선택 2
 - 3. Range 변경 2
- 2. SDO Write 기능 사용** 4
 - 1. Slave 버튼 클릭 4
 - 2. 슬레이브 선택 4
 - 3. SDO Write로 Range Mode 변경 5

ETS-AI08H-E Range Mode 변경 방법 안내페이지

× ETS-AI08H-E Range Mode 변경 방법 안내페이지

canon_a_comparison_.pdf

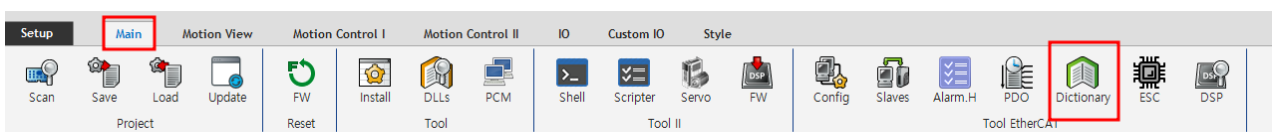
0. ETS-AI08H-E Range Mode Setting

▶ Analog Input Channel Setting (n = 0~7 : 채널 번호)

Index	Sub	Name	Value	Data Type	Flag	
0x80n0	0x00	AI Setting Ch. n	0x0B	UINT8	RO	
	0x01	Enable Limit 1	Limit 1 사용 여부	BOOL	RW	
	0x02	Enable Limit 2	Limit 2 사용 여부	BOOL	RW	
	0x03	Analog Type	0	Voltage Type	BOOL	RW
			1	Current Type		
	0x09	Range Mode	0	-10.24 ~ 10.24 (V)	BIT5	RW
			1	-5.12 ~ 5.12 (V)		
			2	-2.56 ~ 2.56 (V)		
			3	0 ~ 10.24 (V)		
			4	0 ~ 5.12 (V)		
			5	4 ~ 20 (mA)		
6			0 ~ 20 (mA)			
0x0A	Limit1 Value	Limit 1 값	INT32	RW		
0x0B	Limit2 Value	Limit 2 값	INT32	RW		

1. ComiIDE Dictionary 이용

1. ComiIDE Dictionary 버튼 클릭



- Main - Dictionary 버튼 클릭

2. 변경하고자 하는 슬레이브 선택

Object Dictionary

02 : [0202] AES-CBC-AIO Update Interval 1000 Config

EtherCAT

- Net 0
 - 00 : [02FF] MASTER-DC
 - 01 : [0201] AES-CBC-DIO
 - 02 : [0202] AES-CBC-AIO**

Index	Name	Type	Size	Value	Value_Hex	Flag
0x1000	Device type	UDINT	4	791433	0xC1389	
0x1008	Device name	STRING(10)	10	AES-CBC-AI		
0x1009	Hardware version	STRING(4)	4	v1.0		
0x100A	Software version	STRING(8)	8	v1.0.0.0		
0x1018	Identity	DT1018	18			
0x1600	AO RxPDO-Map	DT1600	50			
0x1A00	AI TxPDO-Map00	DT1A00	38			
0x1A01	AI TxPDO-Map01	DT1A00	38			
0x1A02	AI TxPDO-Map02	DT1A00	38			
0x1A03	AI TxPDO-Map03	DT1A00	38			
0x1A04	AI TxPDO-Map04	DT1A00	38			
0x1A05	AI TxPDO-Map05	DT1A00	38			
0x1A06	AI TxPDO-Map06	DT1A00	38			
0x1A07	AI TxPDO-Map07	DT1A00	38			
0x1A08	AI TxPDO-Map08	DT1A00	38			
0x1A09	AI TxPDO-Map09	DT1A00	38			
0x1A0A	AI TxPDO-Map10	DT1A00	38			
0x1A0B	AI TxPDO-Map11	DT1A00	38			
0x1A20	AI(SOL) TxPDO-Map00	DT1A00	38			
0x1A21	AI(SOL) TxPDO-Map01	DT1A00	38			
0x1A22	AI(SOL) TxPDO-Map02	DT1A00	38			
0x1A23	AI(SOL) TxPDO-Map03	DT1A00	38			

- 변경하고자 하는 슬레이브를 왼쪽 리스트에서 찾아서 선택 (사진에선 ETS-AI08H-E와 유사한 제품으로 테스트 진행함.)

3. Range 변경

Object Dictionary

02 : [0202] AES-CBC-AIO Update Interval 1000 Config

EtherCAT

- Net 0
 - 00 : [02FF] MASTER-DC
 - 01 : [0201] AES-CBC-DIO
 - 02 : [0202] AES-CBC-AIO

Index	Name	Type	Size	Value	Value_Hex	Flag
0x7210	Analog(SOL) Output Channel 1	DT7000	4			
0x7220	Analog(SOL) Output Channel 2	DT7000	4			
0x7230	Analog(SOL) Output Channel 3	DT7000	4			
0x7240	Analog(SOL) Output Channel 4	DT7000	4			
0x7250	Analog(SOL) Output Channel 5	DT7000	4			
0x7260	Analog(SOL) Output Channel 6	DT7000	4			
0x7270	Analog(SOL) Output Channel 7	DT7000	4			
0x8000	Analog Input Setting Ch.0	DT8000	24			
0x0	SubIndex 000	USINT	1	11	0xB	
0x1	Enable Limit1	BOOL	0	0	0x0	
0x2	Enable Limit2	BOOL	0	0	0x0	
0x9	Range Mode	DT8001EN	1	0	0x0	
0xA	Limit1 Value	DINT	4	0	0x0	
0xB	Limit2 Value	DINT	4	0	0x0	
0x8010	Analog Input Setting Ch.1	DT8000	24			
0x8020	Analog Input Setting Ch.2	DT8000	24			
0x8030	Analog Input Setting Ch.3	DT8000	24			
0x8040	Analog Input Setting Ch.4	DT8000	24			
0x8050	Analog Input Setting Ch.5	DT8000	24			
0x8060	Analog Input Setting Ch.6	DT8000	24			
0x8070	Analog Input Setting Ch.7	DT8000	24			
0x8080	Analog Input Setting Ch.8	DT8000	24			

- 0x80n0 번지의 Analog Input Channel Setting 항목 선택 (여기서 n은 채널 번호)

Object Dictionary

02 : [0202] AES-CBC-AIO ✎ Update Interval 1000 Config

EtherCAT

- Net 0
 - 00 : [02FF] MASTER-DC
 - 01 : [0201] AES-CBC-DIO
 - 02 : [0202] AES-CBC-AIO

Index	Name	Type	Size	Value	Value_Hex	Flag
0x7210	Analog(SOL) Output Channel 1	DT7000	4			
0x7220	Analog(SOL) Output Channel 2	DT7000	4			
0x7230	Analog(SOL) Output Channel 3	DT7000	4			
0x7240	Analog(SOL) Output Channel 4	DT7000	4			
0x7250	Analog(SOL) Output Channel 5	DT7000	4			
0x7260	Analog(SOL) Output Channel 6	DT7000	4			
0x7270	Analog(SOL) Output Channel 7	DT7000	4			
0x8000	Analog Input Setting Ch.0	DT8000	24			
0x0	SubIndex 000	USINT	1	11	0xB	
0x1	Enable Limit1	BOOL	0	0	0x0	
0x2	Enable Limit2	BOOL	0	0	0x0	
0x9	Range Mode	DT8001EN	1	0	0x0	
0xA	Limit1 Value	DINT	4	0	0x0	
0xB	Limit2 Value	DINT	4	0	0x0	
0x8010	Analog Input Setting Ch.1	DT8000	24			
0x8020	Analog Input Setting Ch.2	DT8000	24			
0x8030	Analog Input Setting Ch.3	DT8000	24			
0x8040	Analog Input Setting Ch.4	DT8000	24			
0x8050	Analog Input Setting Ch.5	DT8000	24			
0x8060	Analog Input Setting Ch.6	DT8000	24			
0x8070	Analog Input Setting Ch.7	DT8000	24			
0x8080	Analog Input Setting Ch.8	DT8000	24			

Index Order ID Order

- Value 더블클릭

Object Dictionary

02 : [0202] AES-CBC-AIO ✎ Update Interval 1000 Config

EtherCAT

- Net 0
 - 00 : [02FF] MASTER-DC
 - 01 : [0201] AES-CBC-DIO
 - 02 : [0202] AES-CBC-AIO

Index	Name	Type	Size	Value	Value_Hex	Flag
0x7210	Analog(SOL) Output Channel 1	DT7000	4			
0x7220	Analog(SOL) Output Channel 2	DT7000	4			
0x7230	Analog(SOL) Output Channel 3	DT7000	4			
0x7240	Analog(SOL) Output Channel 4	DT7000	4			
0x7250	Analog(SOL) Output Channel 5	DT7000	4			
0x7260	Analog(SOL) Output Channel 6	DT7000	4			
0x7270	Analog(SOL) Output Channel 7	DT7000	4			
0x8000	Analog Input Setting Ch.0	DT8000	24			
0x0	SubIndex 000	USINT	1	11	0xB	
0x1	Enable Limit1	BOOL	0	0	0x0	
0x2	Enable Limit2	BOOL	0	0	0x0	
0x9	Range Mode	DT8001EN	1	6	0x0	
0xA	Limit1 Value	DINT	4	0	0x0	
0xB	Limit2 Value	DINT	4	0	0x0	
0x8010	Analog Input Setting Ch.1	DT8000	24			
0x8020	Analog Input Setting Ch.2	DT8000	24			
0x8030	Analog Input Setting Ch.3	DT8000	24			
0x8040	Analog Input Setting Ch.4	DT8000	24			
0x8050	Analog Input Setting Ch.5	DT8000	24			
0x8060	Analog Input Setting Ch.6	DT8000	24			
0x8070	Analog Input Setting Ch.7	DT8000	24			
0x8080	Analog Input Setting Ch.8	DT8000	24			

Index Order ID Order

- 원하는 값으로 수정 후 Enter 키 입력

Object Dictionary

02 : [0202] AES-CBC-AIO Update Interval 1000 1000 Config

EtherCAT

- Net 0
 - 00 : [02FF] MASTER-DC
 - 01 : [0201] AES-CBC-DIO
 - 02 : [0202] AES-CBC-AIO

Index	Name	Type	Size	Value	Value_Hex	Flag
0x7210	Analog(SOL) Output Channel 1	DT7000	4			
0x7220	Analog(SOL) Output Channel 2	DT7000	4			
0x7230	Analog(SOL) Output Channel 3	DT7000	4			
0x7240	Analog(SOL) Output Channel 4	DT7000	4			
0x7250	Analog(SOL) Output Channel 5	DT7000	4			
0x7260	Analog(SOL) Output Channel 6	DT7000	4			
0x7270	Analog(SOL) Output Channel 7	DT7000	4			
0x8000	Analog Input Setting Ch.0	DT8000	24			
0x0	SubIndex 000	USINT	1	11	0xB	
0x1	Enable Limit1	BOOL	0	0	0x0	
0x2	Enable Limit2	BOOL	0	0	0x0	
0x9	Range Mode	DT8001EN	1	6	0x6	
0xA	Limit1 Value	DINT	4	0	0x0	
0xB	Limit2 Value	DINT	4	0	0x0	
0x8010	Analog Input Setting Ch.1	DT8000	24			
0x8020	Analog Input Setting Ch.2	DT8000	24			
0x8030	Analog Input Setting Ch.3	DT8000	24			
0x8040	Analog Input Setting Ch.4	DT8000	24			
0x8050	Analog Input Setting Ch.5	DT8000	24			
0x8060	Analog Input Setting Ch.6	DT8000	24			
0x8070	Analog Input Setting Ch.7	DT8000	24			
0x8080	Analog Input Setting Ch.8	DT8000	24			

Index Order ID Order

- 원하는 값이 표시되었다면 Range mode 변경 정상 동작 완료

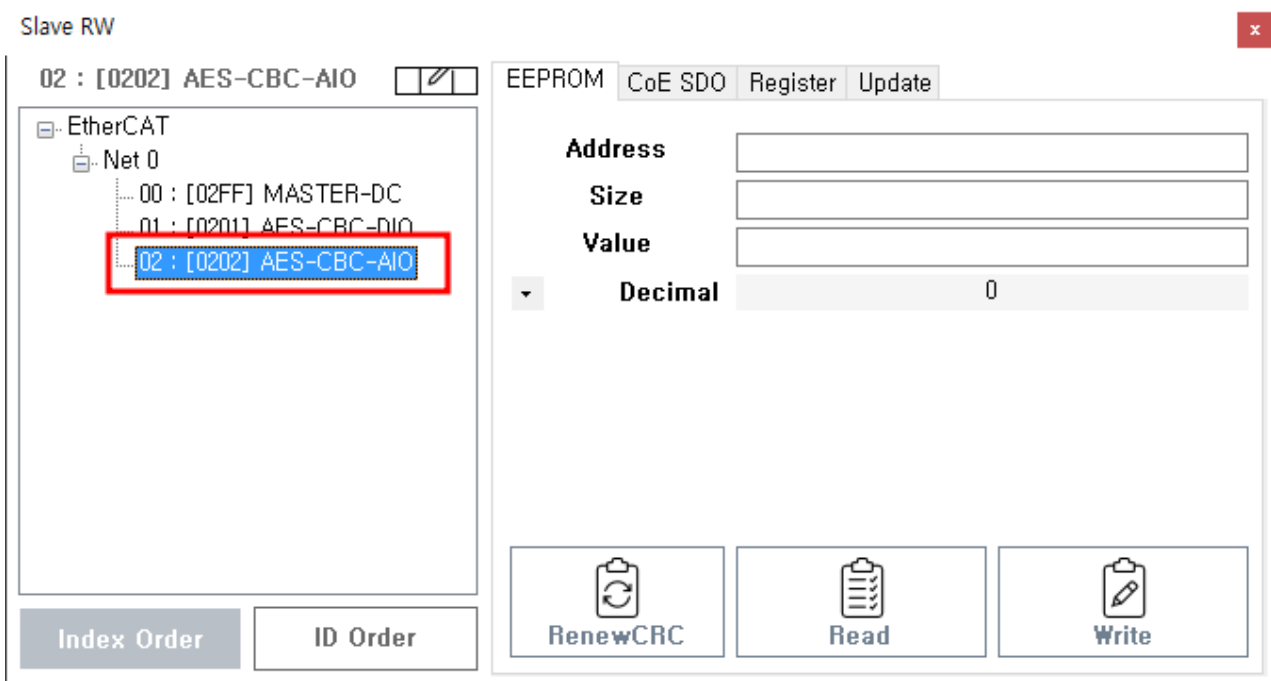
2. SDO Write 기능 사용

1. Slave 버튼 클릭

The screenshot shows a software interface with a top menu bar containing 'Setup', 'Main', 'Motion View', 'Motion Control I', 'Motion Control II', 'IO', 'Custom IO', and 'Style'. Below the menu bar is a toolbar with various icons. The 'Main' tab is highlighted with a red box. In the toolbar, the 'Slaves' icon (depicting two server racks) is also highlighted with a red box.

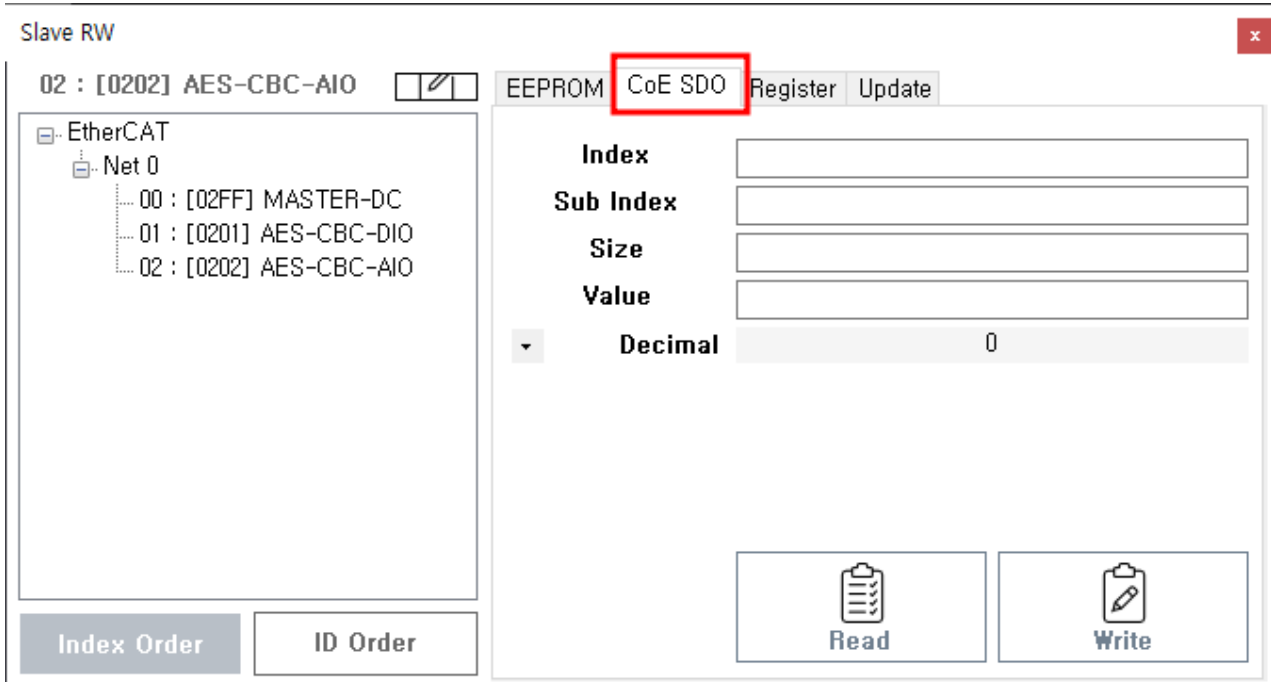
- Main - Slave 버튼 클릭

2. 슬레이브 선택

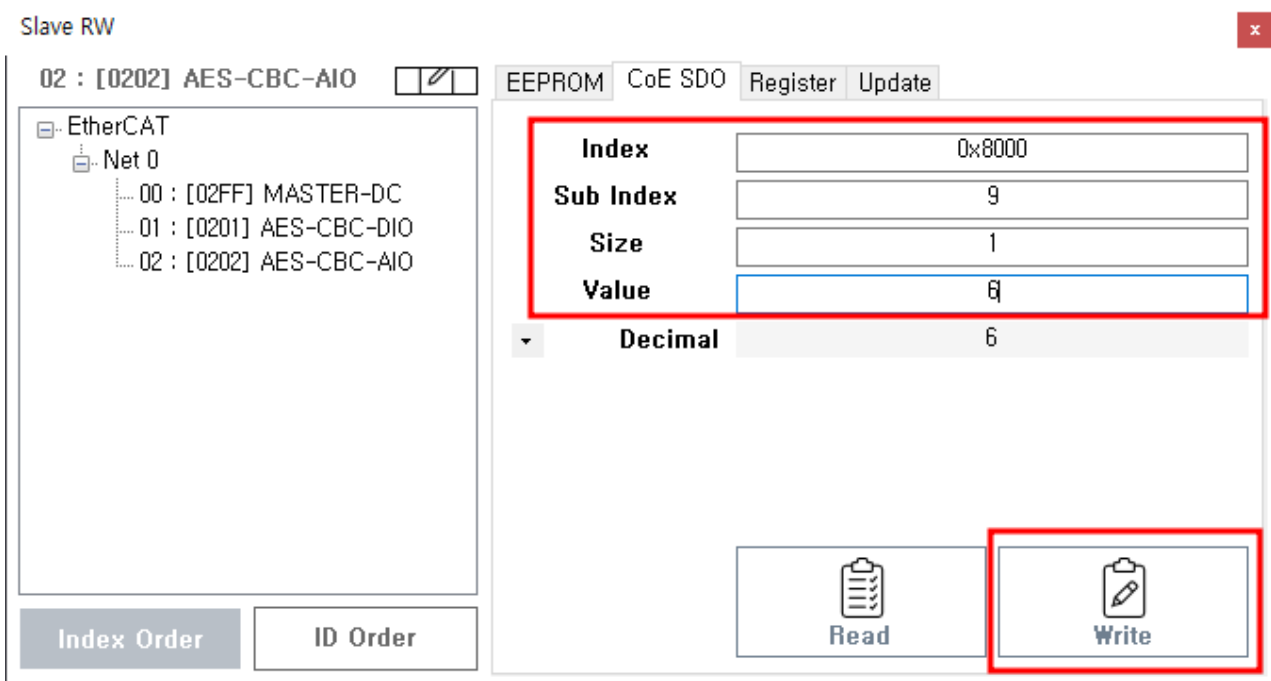


- 왼쪽 리스트에서 변경을 원하는 슬레이브 선택

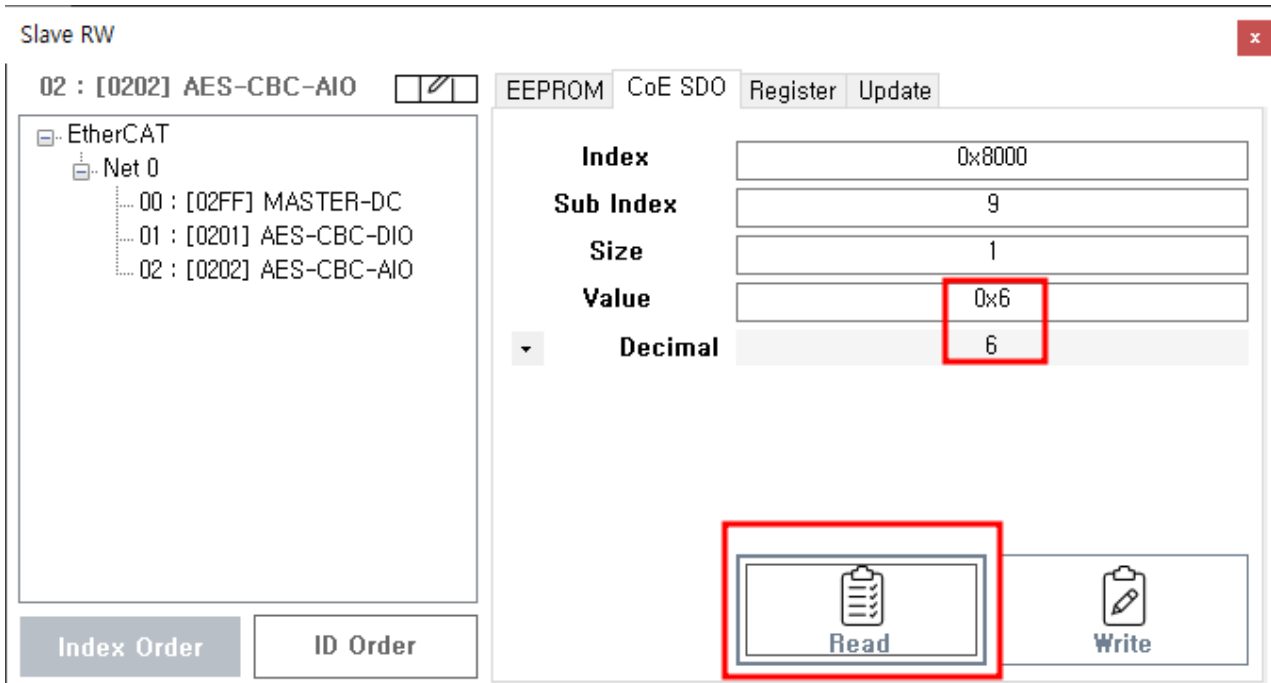
3. SDO Write로 Range Mode 변경



- CoE SDO 탭 선택



- Index는 0x80n0 입력 (n은 채널번호)
- SubIndex는 9 입력 (Range Mode)
- Size는 1 입력 (1byte)
- Value는 원하는 RangeMode 입력
- 제대로 값을 입력 한 후 Write 버튼 클릭



- Read 버튼을 눌러 값이 제대로 입력되었는지 확인

From:

<https://www.comizoa.com/info/> - -

Permanent link:

https://www.comizoa.com/info/doku.php?id=tempmanuals:00_ets_ai08_rangemode_change&rev=1660121238

Last update: **2024/07/08 18:22**